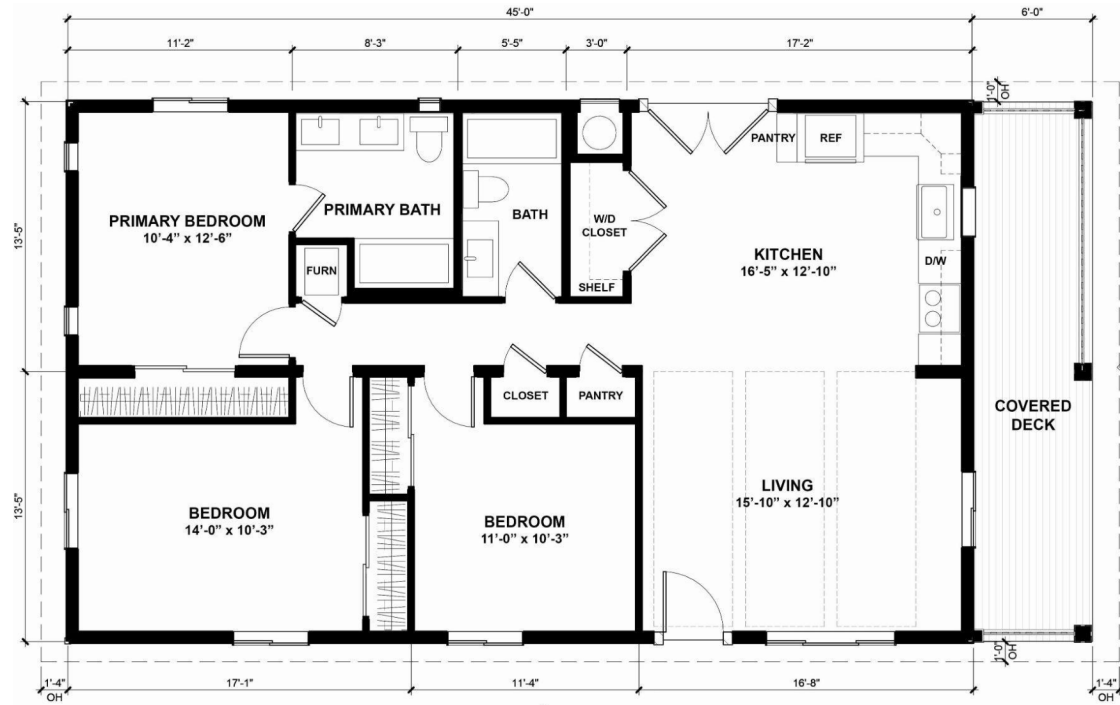


Villa - H1200B

1,208 SF | 3 Bedrooms | 2 Baths

With multiple configurations options and privacy-forward layout, the H1200b puts all the shared spaces on one side. At just under 1,200 square feet, the H1200b comes in at size limit of California ADUs. All of our homes come standard with fiber cement siding, electric stainless steel appliances, designer finishes, energy-efficient lighting, central heating, air conditioning, and high-efficiency dual-pane windows.



Featured by

BUSINESS
INSIDER

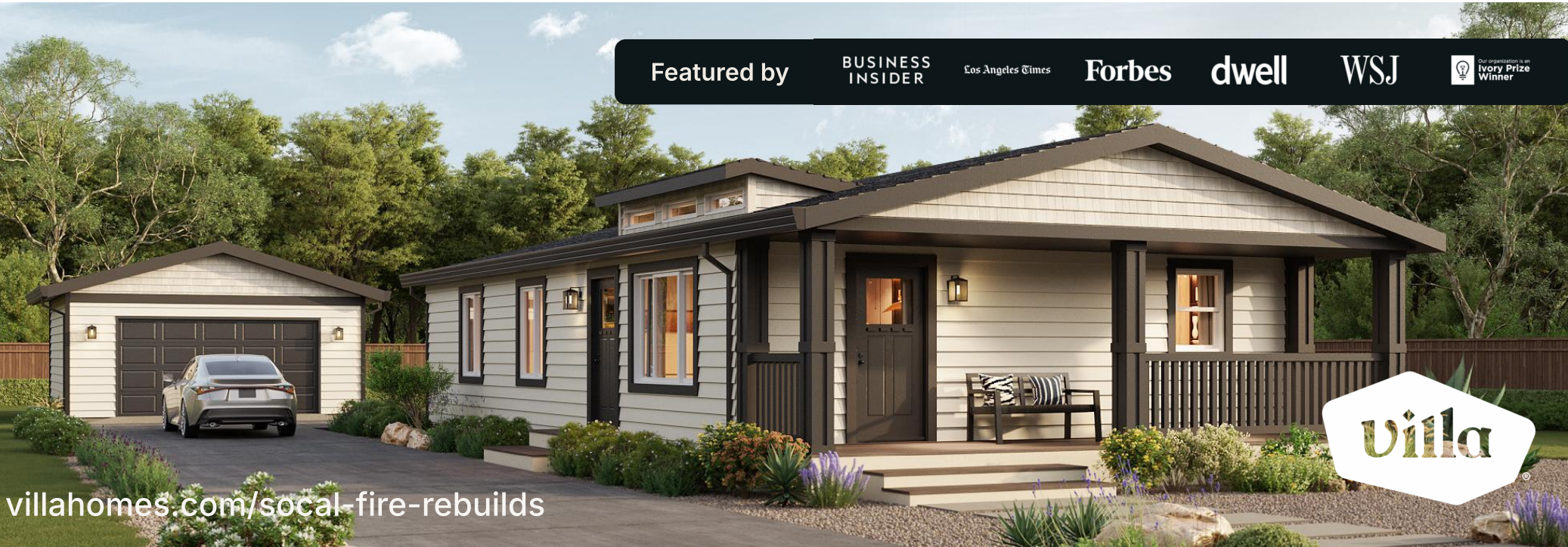
Los Angeles Times

Forbes

dwll

WSJ

Our organization is an
Ivory Prize
Winner



villahomes.com/socal-fire-rebuilds

Villa