

THE ELLWOOD

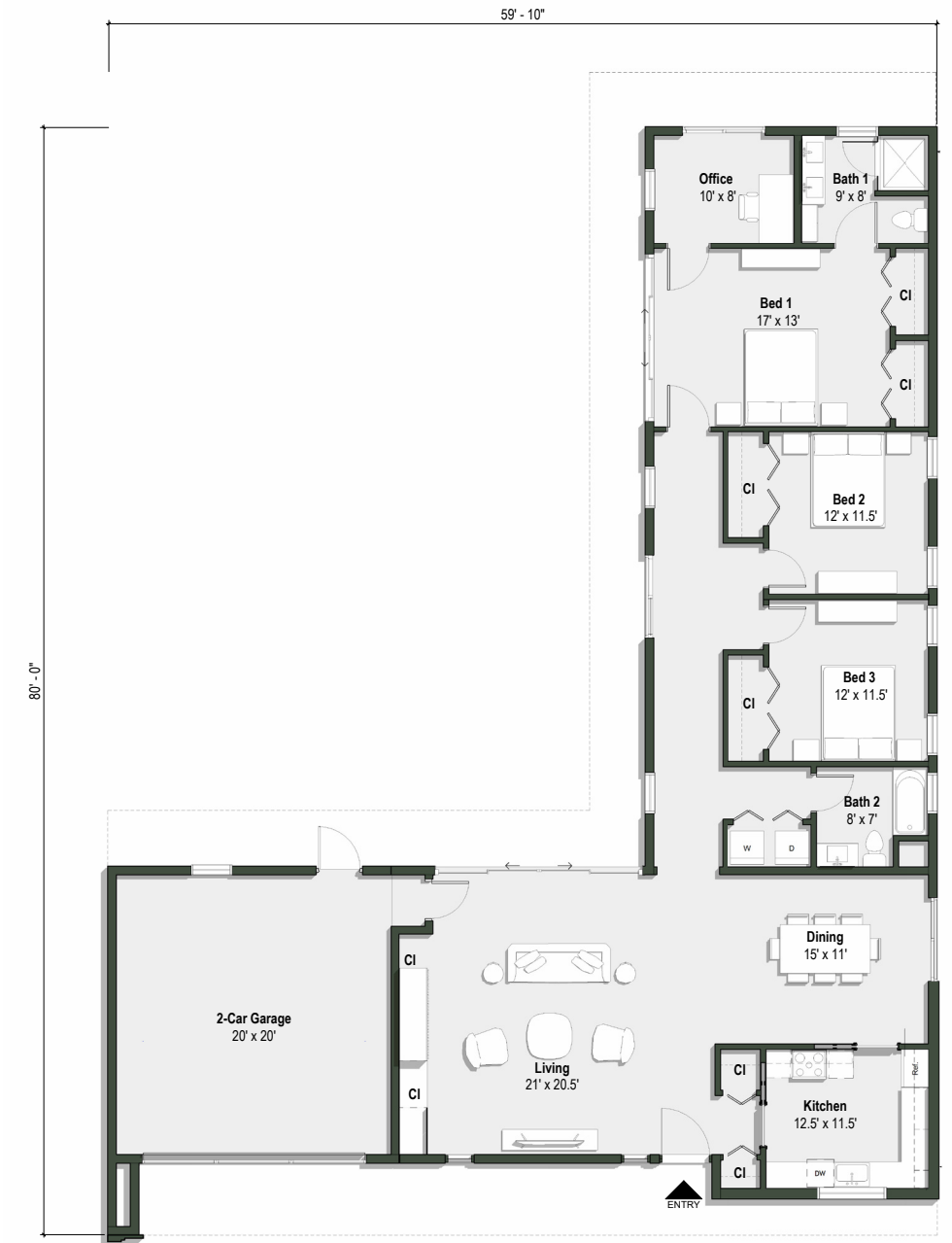
with 2-car garage, concept design by Kevin Geraghty



The Ellwood with 2-Car Garage is a striking Modern design with an expansive layout that makes it a perfect family home. Its playful, yet balanced, material palette creates a strong and memorable façade, giving the house a clear architectural identity and curb appeal. Bedrooms are located in a separate wing from the social spaces, offering a sense of privacy from the home's gathering areas. The design also comes in a two- bedroom option, "The Ellwood II with 2-Car Garage". Both the three-bedroom and two- bedroom options can be built without the attached garage.

Features of the Design

- 59'-10"W x 80'-0"L
- 1,997 SF
- 3 Bedrooms
- 2 Bathrooms
- Attached Garage



Ground Floor Plan