

HomeN°4



by SuperLA®

W: super.la E: team@super.la

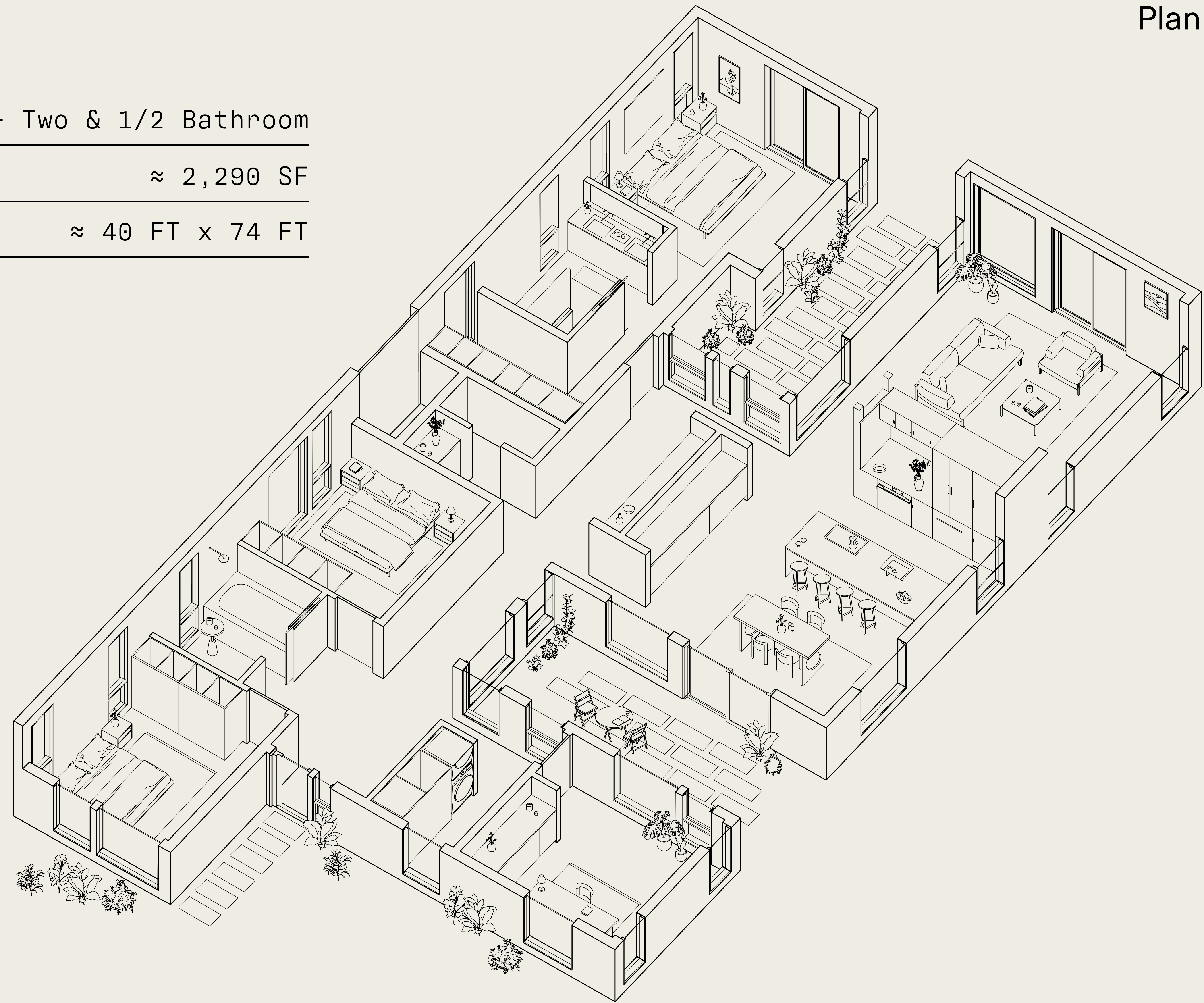
HomeNº4

Plan

Space: Four Bedroom + Two & 1/2 Bathroom

Home SF: $\approx 2,290$ SF

Home Footprint: ≈ 40 FT x 74 FT



by **SuperLA**®

HomeNº4

Plan

Primary Bedroom

Primary Bathroom

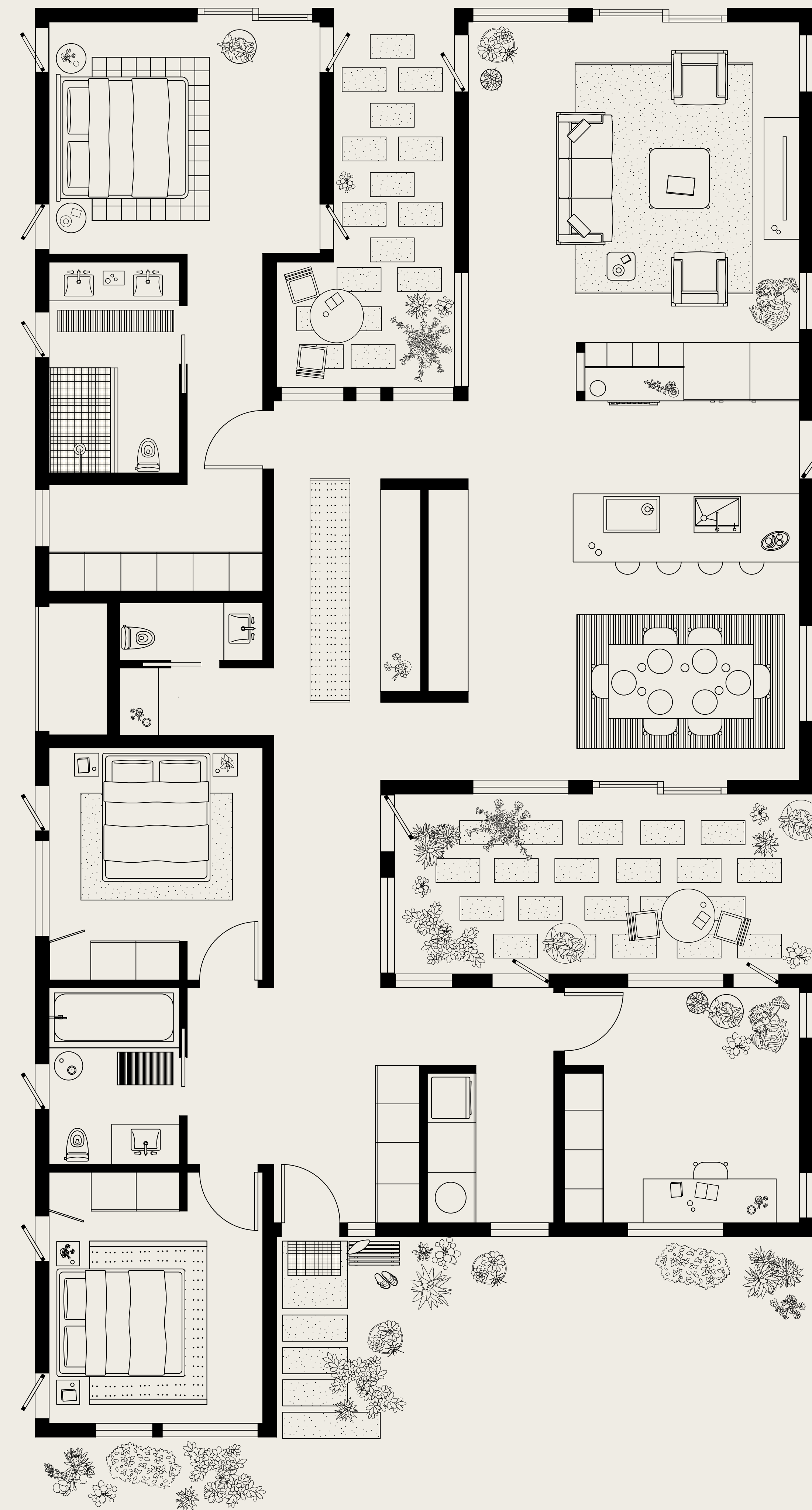
Walk-In Closet

Utility + 1/2 Bathroom

Bedroom 2

Secondary Bathroom

Bedroom 3



Atrium + Outdoor Access

Living Room

Open Kitchen

Breakfast Bar

Dining Room + Slider

Atrium Garden

Laundry

Bedroom 4 / Office

Entry Landing

by **SuperLA**®



HomeN°4

Exterior

by **SuperLA**®



Disclaimer: Visuals for HomeN° are conceptual and intended as a design guide. Final finishes, materials, layout, and other elements may vary from what is shown in this presentation.

HomeN°4

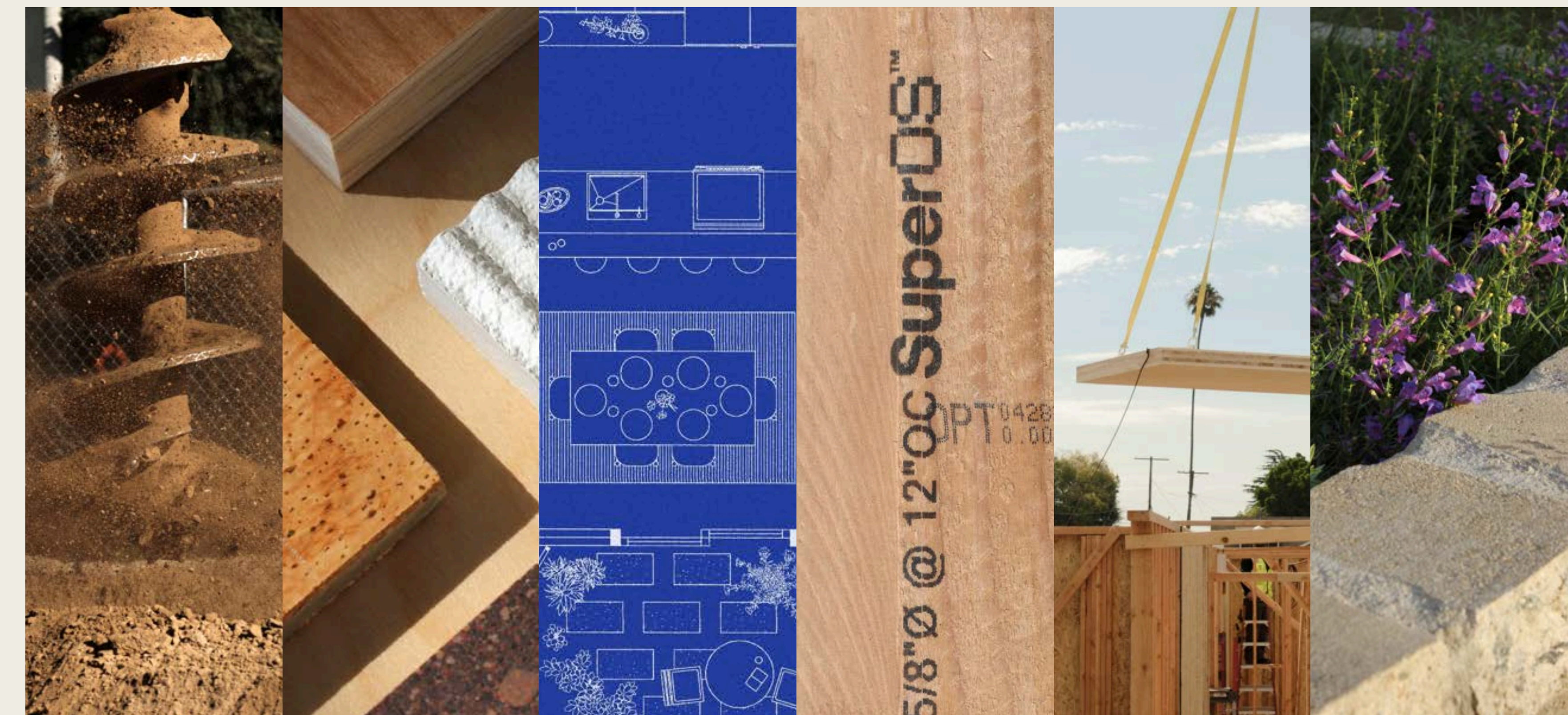
Atrium

by **SuperLA**®

HomeNº4

**From design to delivery.
A process built for you.**

by **SuperLA®**



1. 2. 3. 4. 5. 6.

Process

As the architect, designer, and builder, SuperLA® serves as your single point of contact, managing every aspect of your rebuild from start to finish. Our streamlined process simplifies design and permitting with thoughtfully pre-designed homes, while our panelized building system ensures a faster construction timeline.

You pick which SuperLA® Home product you would like on your property, we take care of the rest.

W: super.la

E: team@super.la