

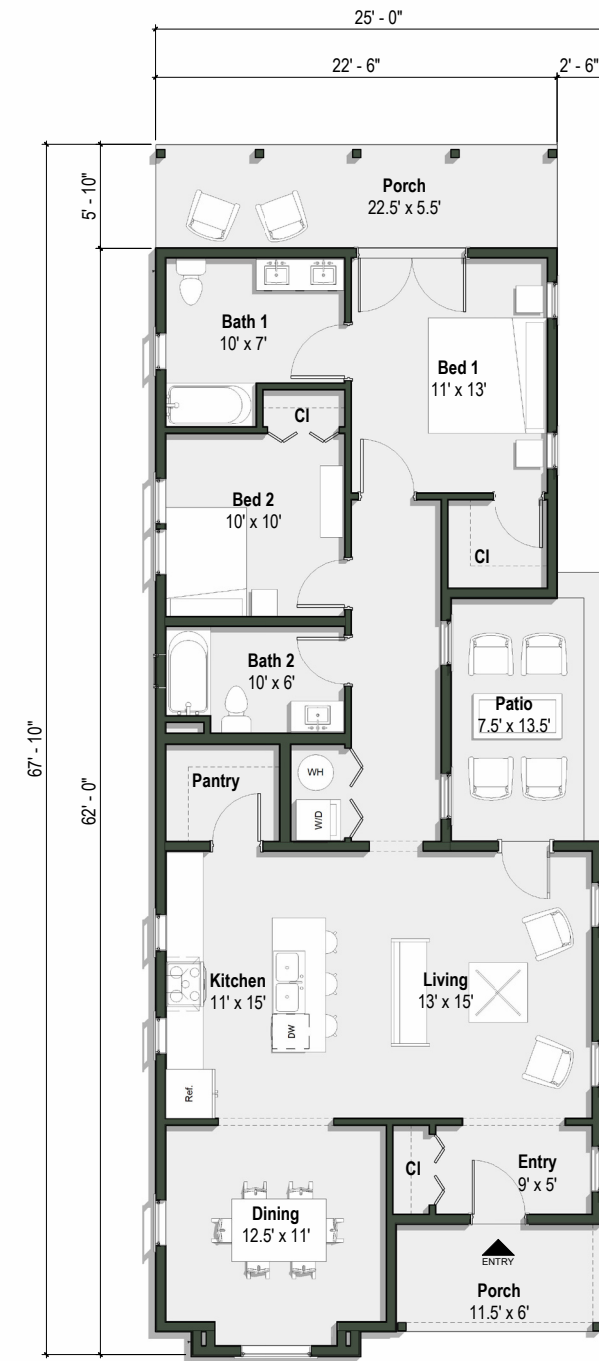
EL GUILLERMO



Spanish Revival meets a modern floor plan in el Guillermo. The house features a dining room and a spacious kitchen with a pantry. The living room opens onto a side courtyard that, combined with the rear porch, promotes true California indoor/outdoor living. El Guillermo was designed with narrow lots in mind while still providing ample living space running the length of its plot. This floor plan is also available as a Tudor style home ("The Marlowe") and a California Ranch style home ("The Billy").

Features of the Design

- 25'-0"W x 67'-10"L
- 1,296 SF
- 2 Bedrooms
- 2 Bathrooms
- Detached Garage



Ground Floor Plan