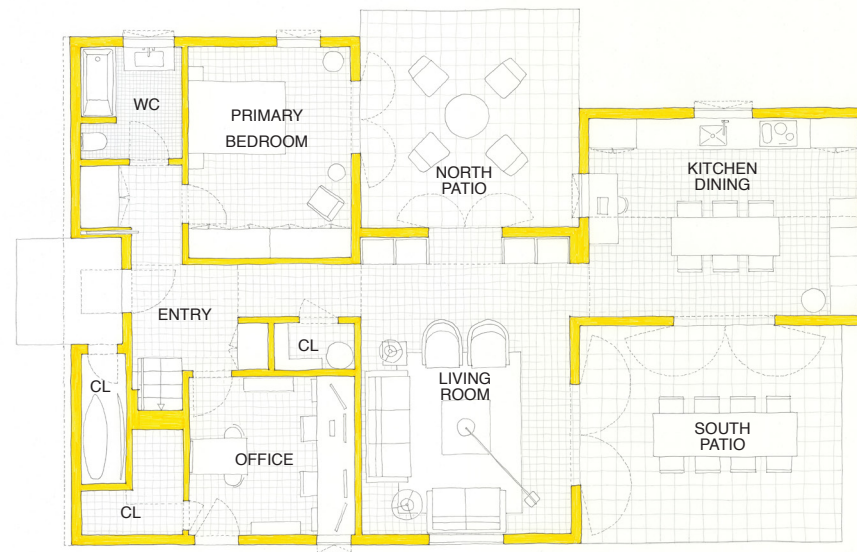


SECOND FLOOR



FIRST FLOOR

1900 Sq/Ft | 4 Bedroom | 2 Baths

The Garden House is designed to fit in a typical LA lot. Its narrow design compacts the sleeping quarters in a economical, straight forward two stories volume.

Contrasting, the living areas, stretch thru the backyard in one story volumes, defining two independent patio areas with different sun exposures and moods. The articulated design focus on living in the garden. A terrace above the living room allows for enjoying the view afar.

The structure and finishes follow a vernacular lightweight construction with plaster facades, glazed patio doors and low maintenance clay flooring inside-out. The roof has a resilient metal cladding.

designed by
buttnerreisdias

www.buttnerreisdias.com
studio@buttnerreisdias.com