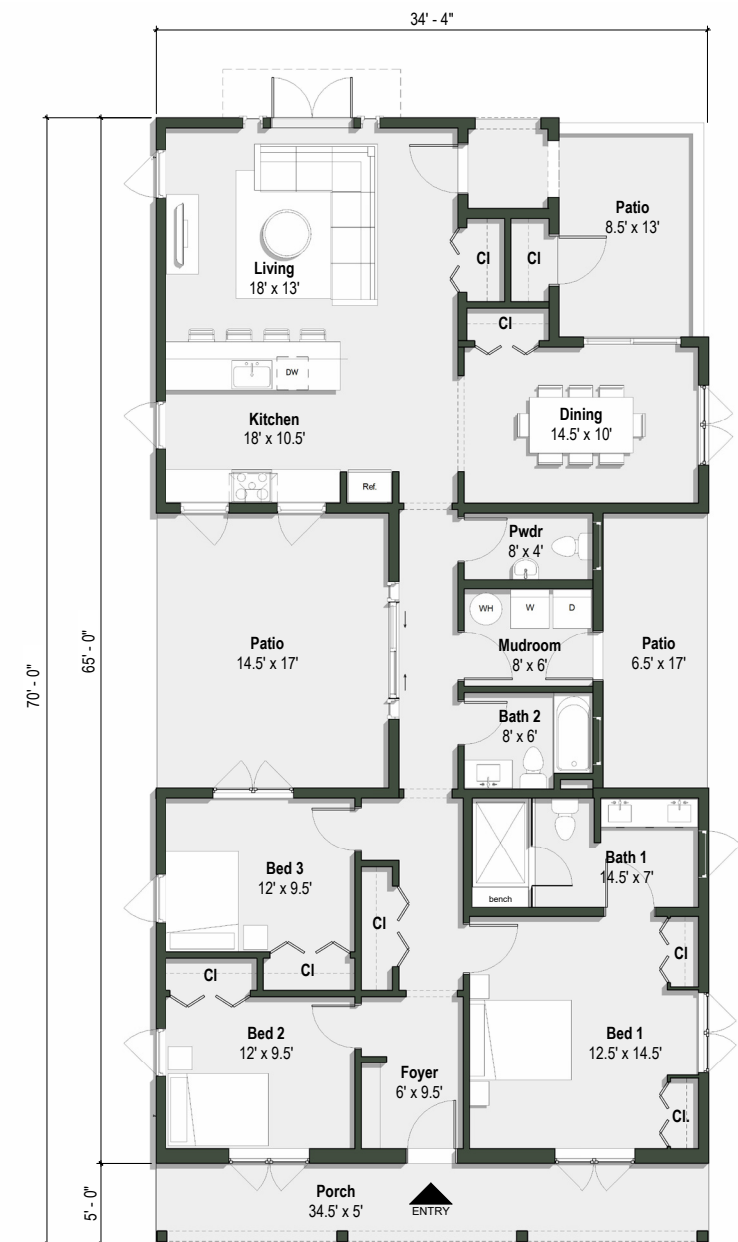


THE MONTEREY I

concept design by Lauren Sommerville



Ground Floor Plan

The Monterey I captures the distinctive curb appeal of the Spanish Colonial Revival style with a terracotta tile roof, white stucco walls, and vertical wood accents. All the social spaces, kitchen, living room, formal dining room, are separated on one wing of the house from the bedrooms, creating a lovely sense of privacy for the more intimate spaces in the home. The Monterey I features two side courtyards that pull the outside into protected living spaces of the home.

Features of the Design

- 34'-4"W x 70'-0"L
- 1,708 SF
- 3 Bedrooms
- 2.5 Bathrooms
- Detached Garage