

LA COUNTY
PLANNING

Conservation & Natural Resources Element Update

February 24, 2026



Conservation & Natural Resources (CNR) Element Update

Purpose of Today's Meeting

- Introduce the Conservation & Natural Resources (CNR) Element Update / Project Scope
- Explain SB 1425 & AB 1889
- Outline opportunities for involvement

Why Your Input Matters

- Your experiences help the County understand how open space, natural areas, and environmental challenges affect your community.
- Public input helps shape County policies that promote climate resilience and equity while balancing growth with conservation.

CNR Element

The **CNR Element** is part of the Los Angeles County General Plan. It guides how the County protects, manages, and connects natural resources while planning for future growth.

Purpose:

- Sets Countywide policy direction
- Guides future planning decisions
- Supports biodiversity and connectivity
- Balances environmental protection with development

Topics:

- Open Space Resources
- Biological Resources
- Local Water Resources
- Agricultural Resources
- Mineral and Energy Resources
- Scenic Resources
- Historic, Cultural, and Paleontological Resources

Why is the CNR Element Important?

- The CNR Element is a foundational part of the Los Angeles County General Plan that guides how natural resources are protected, managed, and connected over the long term.
- Helps balance growth and development with the need to protect sensitive natural areas and maintain healthy ecosystems.
- Updating the CNR Element ensures County policies reflect current science, community needs, new State requirements, including climate adaptation and wildlife connectivity.



General Plan vs Zoning Code - What is the Difference?

General Plan

- Long-term vision
- Countywide Policy Framework
- Guides land use decisions

Zoning Code

- General Plan Implementation
- Regulatory Framework
- Development Regulations
- Enforceable Requirements

How do they work together?



Example

Issue: *Open Space*

Plan Goal: *Effective collaboration in open space resource preservation.*

Policy: *Encourage the development of multi-benefit dedicated open spaces.*

Zoning Code: *Hillside Management Areas Ordinance*

Development Standard: *Required Open Space. At least 70 percent of the net area of the development site shall be provided as required open space.*

Project Scope

C/NR Element Update

The Conservation and Natural Resource Element of the Los Angeles County 2035 General Plan will undergo an update to comply with State legislation, specifically SB 1425 and AB 1889.

This update will:

- Improve equitable access to open space
- Strengthen climate resilience
- Support rewilding and habitat restoration
- Enhance wildlife connectivity and biodiversity protection

SB 1425

Requires cities and counties to update the General Plan Open Space Element to address:

- Access to open space for all residents in a manner that considers social, economic, and racial equity, correlated with the environmental justice policies in the general plan, as applicable.
- Climate resilience and other co-benefits of open space, correlated with the Safety Element.
- Rewilding opportunities, correlated with the Land Use Element.

AB 1889

Requires cities and counties to update applicable General Plan Elements to consider:

- Effect of development within the jurisdiction on the movement of wildlife and habitat connectivity
- Connectivity areas, permeability, and natural landscape areas within the jurisdiction, identify and analyze existing or planned wildlife passage features
- Appropriate standards, policies, and feasible implementation programs through consultation with specified entities and relevant best available science

Research Efforts

Significant Ecological Areas (SEA) Program

SEA PROGRAM

General Plan C/NR Element

Provides the long-term policy framework for the conservation and enhancement of biological resources.

Zoning Code - SEA Ordinance

Establishes permitting and design standards to avoid and minimize impacts to SEA resources.

Background

1976 - 1st SEA Study

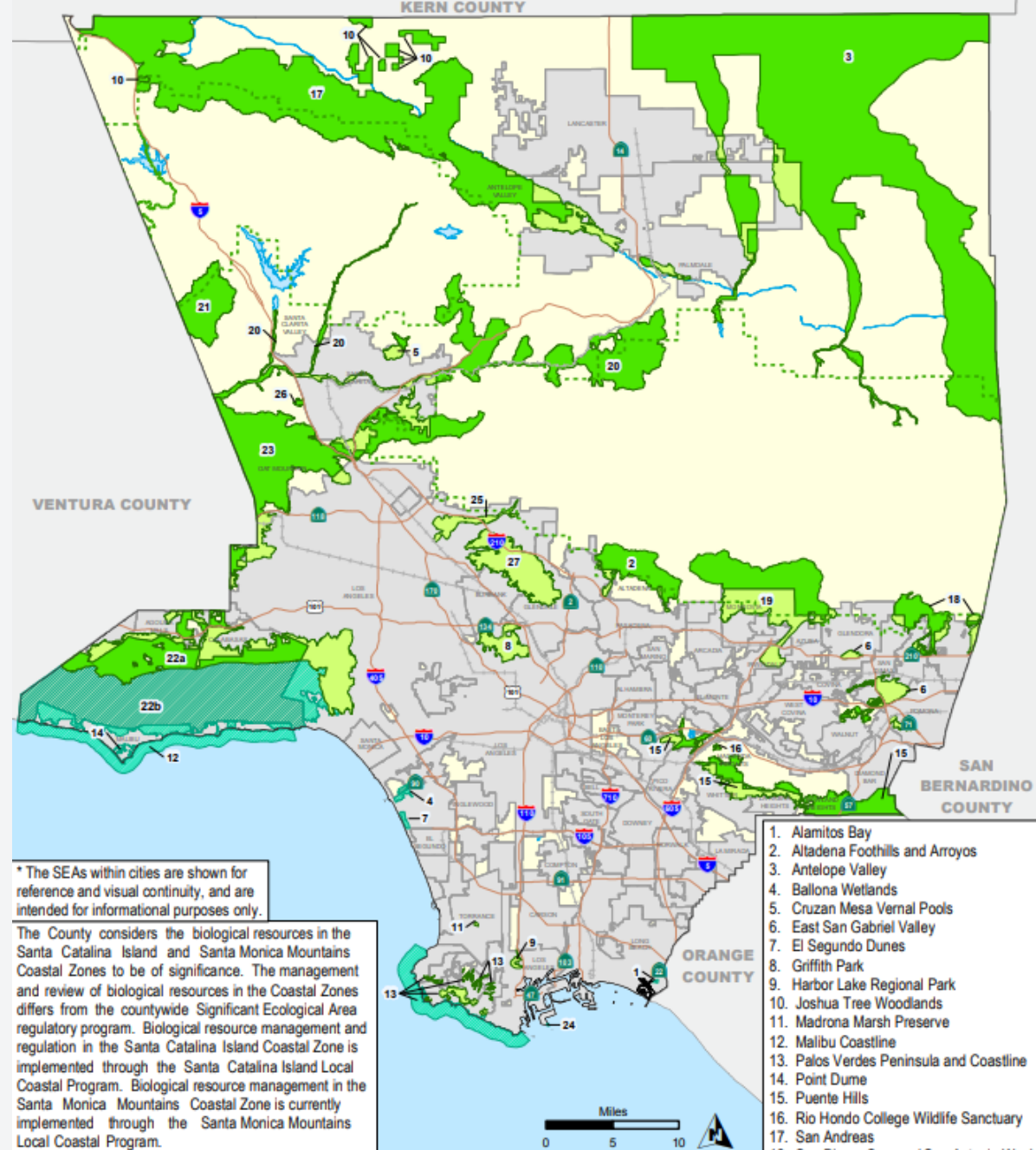
1980 – SEAs adopted as part of Conservation and Open Space Element

1982 – SEA Ordinance approved

2000 - 2nd SEA Study

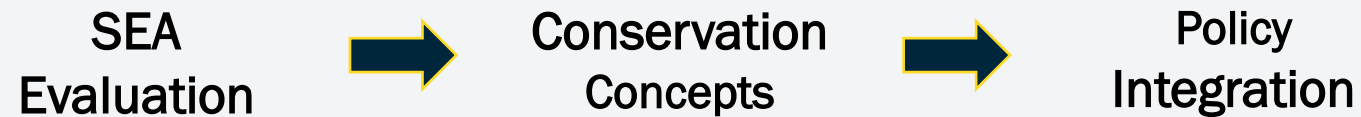
2015 - Expanded SEA boundaries adopted as part of General Plan 2035

2019 - SEA Ordinance Update



SEA Study - Key Objectives

- Evaluate SEAs to ensure they adequately support sustainable species, habitat linkages, and climate resilience.
- Incorporate updated conservation planning concepts, rewilding opportunities, biodiversity protections, and connectivity to evaluate the effectiveness of current SEAs.
- Inform the General Plan Conservation and Natural Resources Element Update.



Next Steps

Project Timeline

Winter 2026	Project Introduction
Winter/Spring 2026	SEA Study CEQA Analysis
Summer 2026	Public Review
Fall 2026 / Winter 2027	Public Hearings

C/NR Element Collaboration & Feedback

Opportunities for Involvement

Community voices help shape how the County balances growth with conservation. Key topics to focus on:

- Share perspectives on how people use, access, and value open space in their communities.
- Identify barriers to equitable access to parks, natural areas, and recreational opportunities.
- Provide ideas on rewilding opportunities and habitat connectivity.

THANK YOU

CONTACT:

EPS@planning.lacounty.gov

PROJECT WEBSITE:

<https://planning.lacounty.gov/long-range-planning/cnr/>