

# LA ABUELITA

concept design by Joey Sandoval

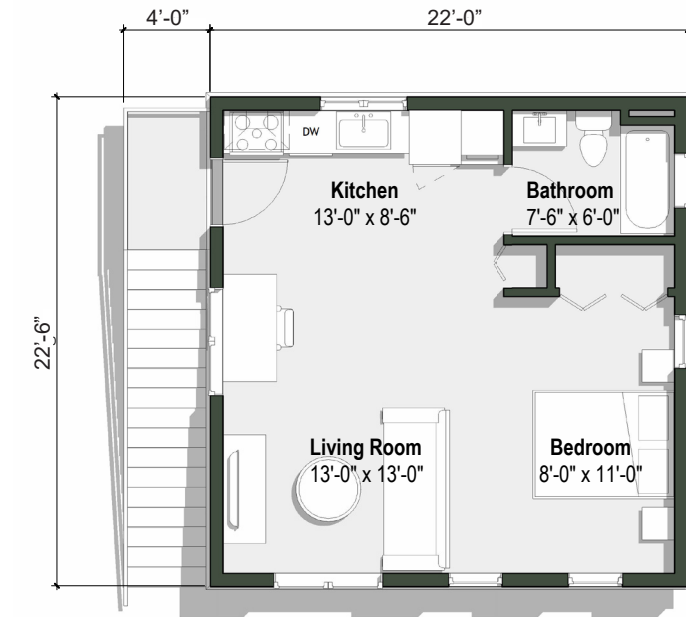


La Abuelita is a backyard ADU designed for independent, multi-generational living. This design is perched atop a two car garage, adding extra living functionality to this back yard building. La Abuelita is perfect as a guest or rental ADU or as an additional space for other family members to live. The design is available in two styles, Spanish and Craftsman (“the Opa”), and two other floor plan options: a single story unit, and a single story unit with a roof deck above.

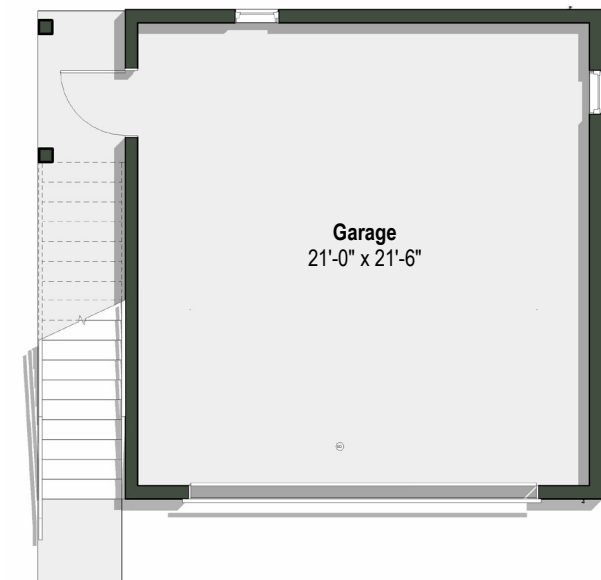
## Features of the Design

- 495 Square Feet ADU
- 495 Square Feet Garage
- 22'-0"W x 22'-6"L
- 1 Bedroom
- 1 Bathroom

THE FOOTHILL CATALOG  
FOUNDATION



*Second Floor Plan*



*Ground Floor Plan*