

EL ABUELITO II

concept design by Joey Sandoval

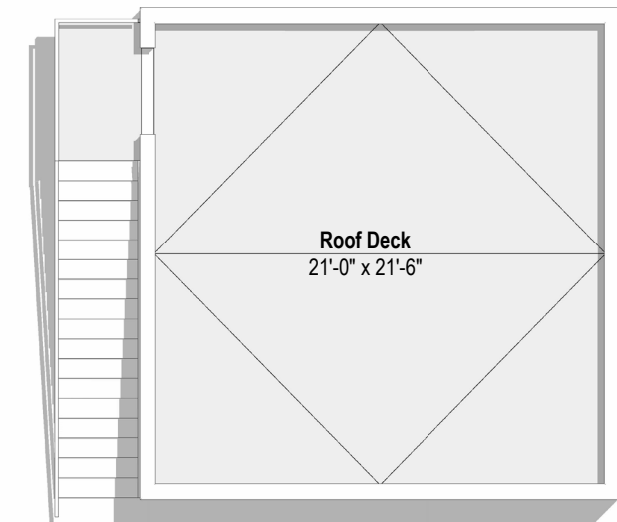


El Abuelito II is a backyard ADU designed for independent, multi-generational living. The design features a bathroom with accessible clearances and an open studio plan. This ADU features a roof deck above the main living space. El Abuelito II is perfect as a guest or rental ADU or as an additional space for other family members to live. The design is available in two styles, Spanish and Craftsman (“the Oma”), and has two other floor plan options: a single story unit, and a carriage-house unit above a two-car garage.

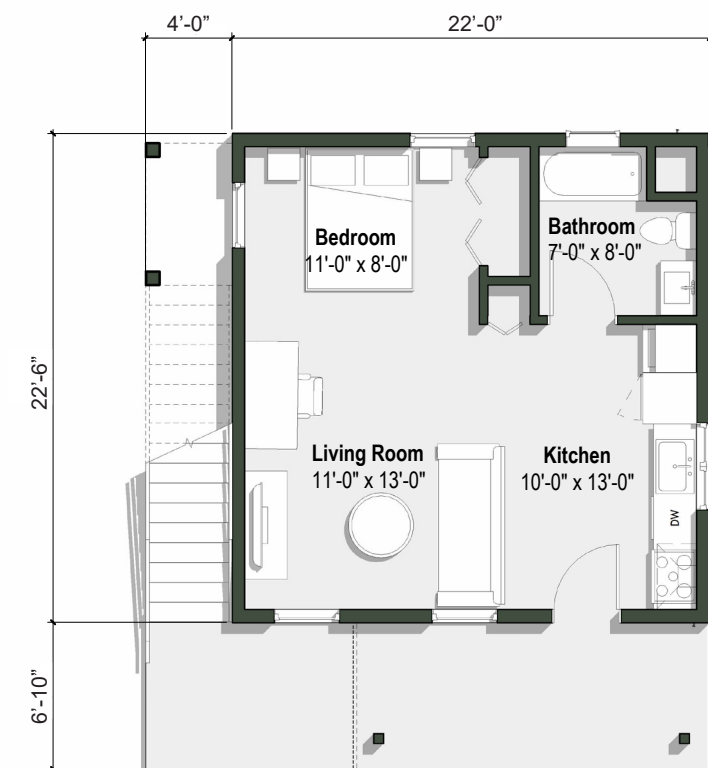
Features of the Design

- 495 Square Feet
- 22'-0"W x 22'-6"L
- 1 Bedroom
- 1 Bathroom

THE FOOTHILL CATALOG
FOUNDATION



Roof Plan



Ground Floor Plan