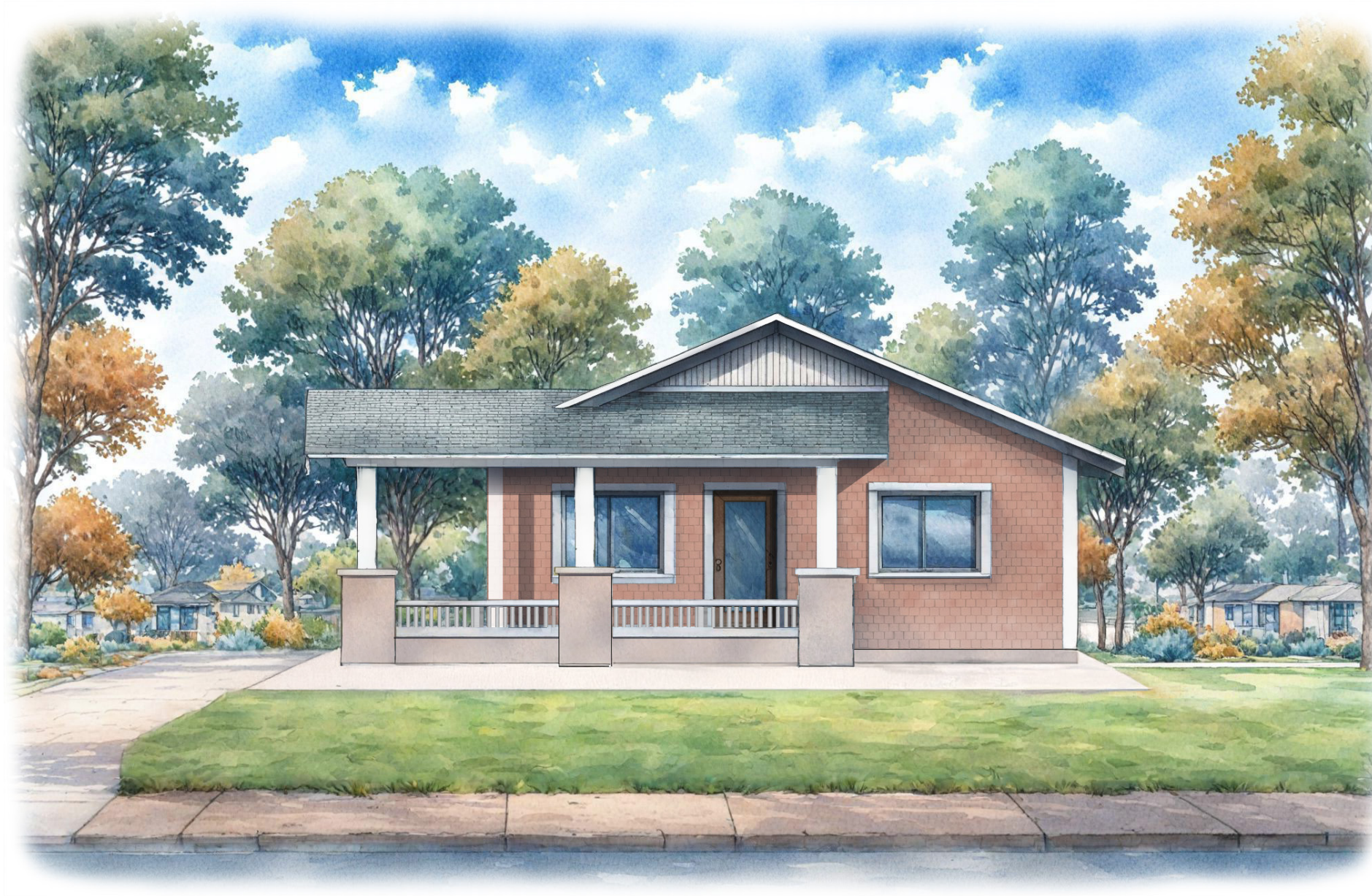


THE ALICE

concept design by Patrick Saucedo

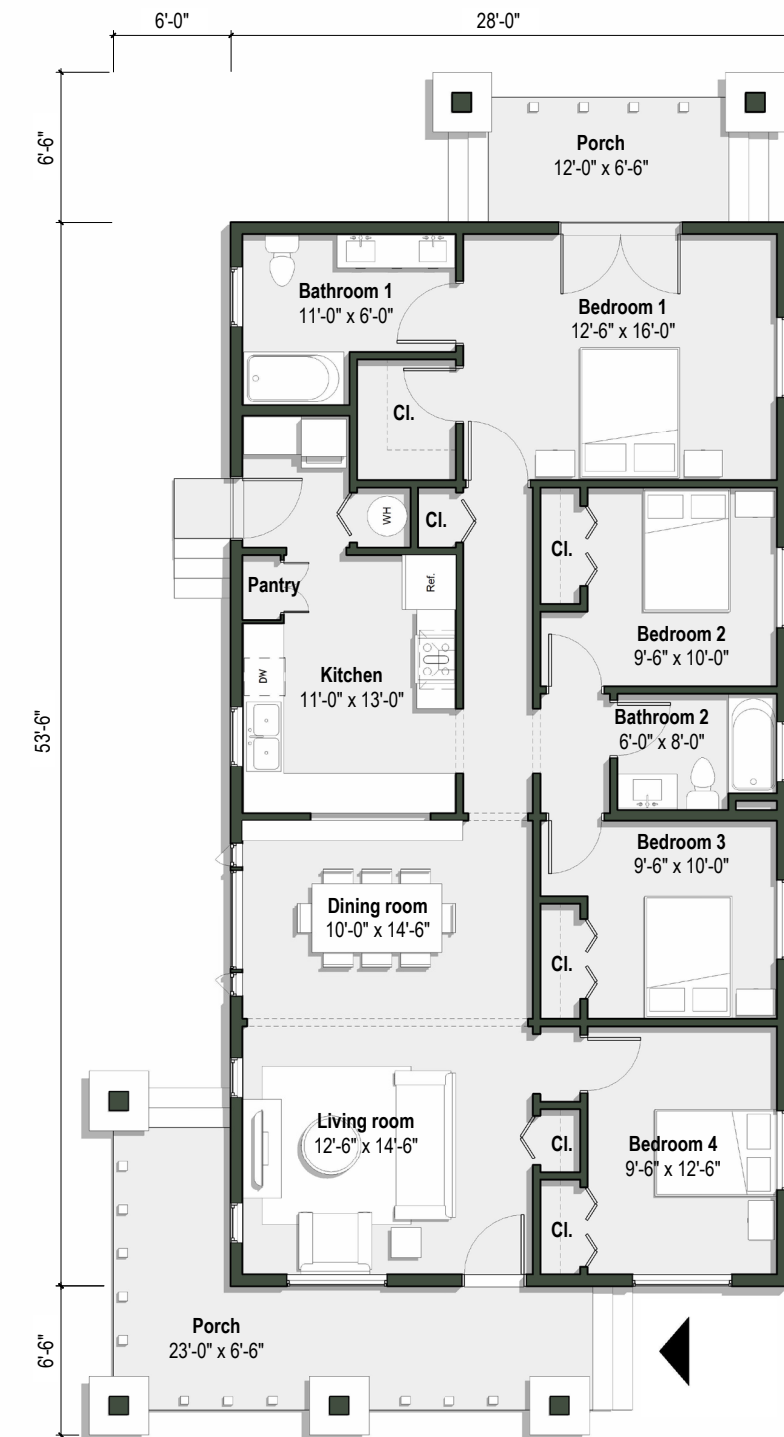


Modeled on a home lost to the Eaton Fire, the Alice fits a lot of value into a compact Craftsman style floor plan. The front bedroom can alternatively be adapted into a den or an office. The kitchen includes a cozy built-in breakfast and coffee bar, connected to the dining room by a pass-through. The bedrooms are all in line with each other creating distinct social and intimate sides of the home. The primary suite opens onto the backyard through a private back porch.

Features of the Design

- 1,498 Square Feet
- 34'-0" W x 67'-0" L
- Four Bedrooms
- Two Bathrooms

THE FOOTHILL CATALOG
FOUNDATION



Ground Floor Plan