



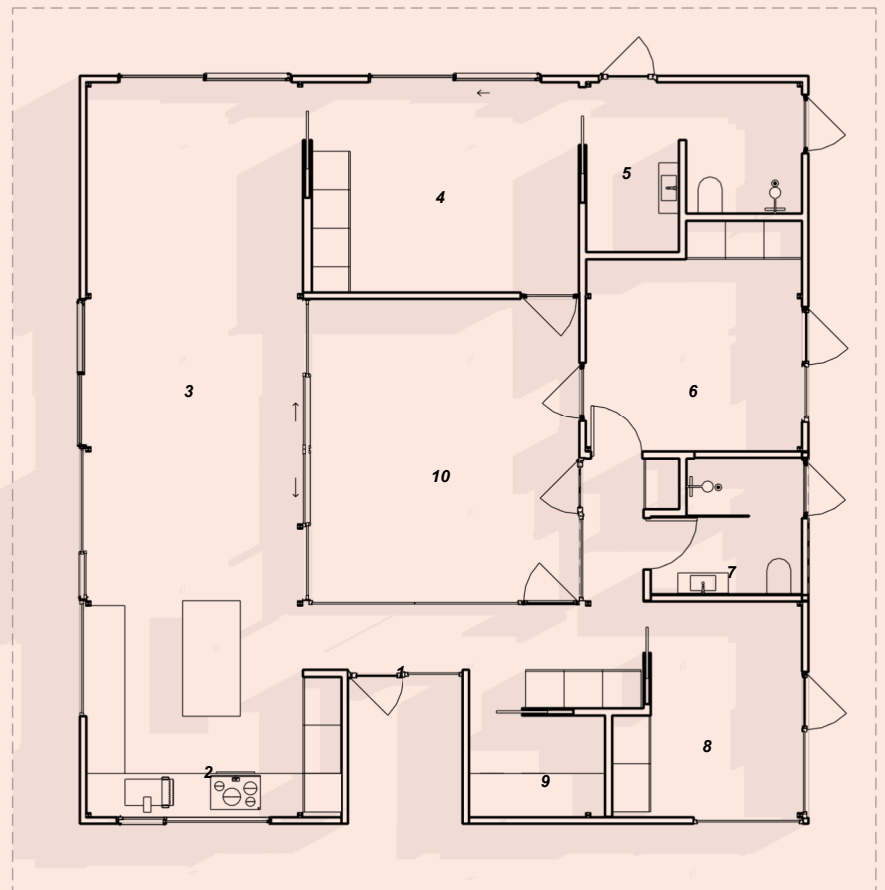
it Court

The it Court is a new take on a classic courtyard plan. Living spaces and bedrooms wrap around a 320sf central courtyard offering private exterior space in a range of site conditions and providing ample amounts of natural daylighting through various times of the day. Large sliding glass doors connect interior living and sleeping areas to outdoor living rooms, increasing the usable area of the house. Large roof overhangs extend beyond the perimeter of the house giving the house a mid-century aesthetic and offering passive cooling to large glass areas.

Floor Area: 1200sf
 Footprint: 38'-10" x 37'-10"
 Single-Story
 Ceiling Height: 9ft
 3 Bed, 2 Bath

Floor Plan
 1" = 10'-0"

1. Entry Corridor
2. Kitchen
3. Open Living
4. Primary Bedroom
5. Ensuite Bath
6. Bedroom
7. Bathroom
8. Bedroom / Study
9. Laundry
10. Interior Courtyard



Taalman Architecture / IT House Inc
 1807 Blake Ave, Los Angeles
 213-380-1060 / inquiry@ithouseinc.com