

THE LEXINGTON

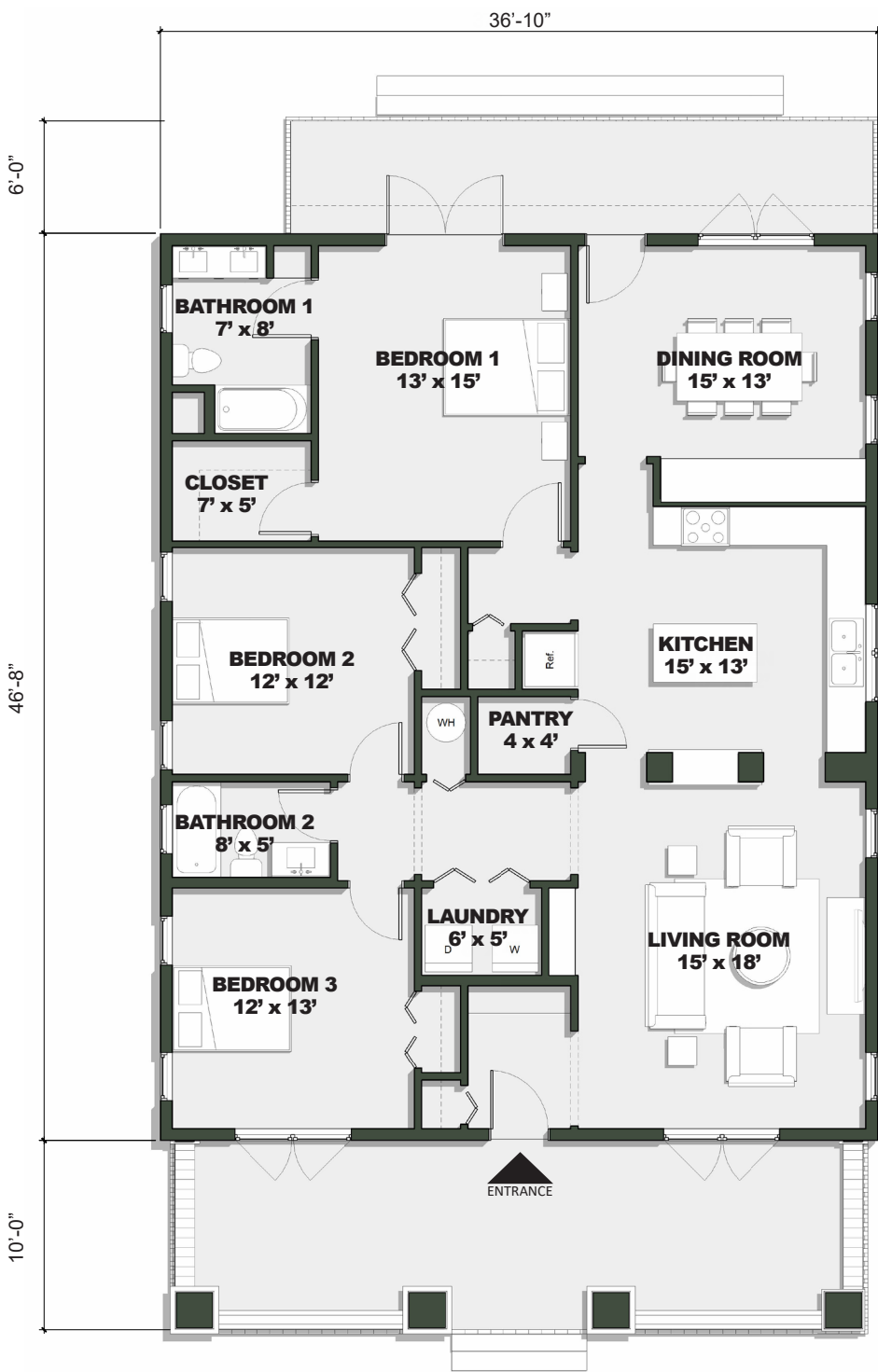
concept design by Sam Fischer



The Lexington is a charming California Bungalow that blends simple elegance with Craftsman style. Its flexible layout fits a variety of lifestyles. The front bedroom works well as a den or home office. The main suite has a walk in closet and a dedicated bathroom. The spacious kitchen is visually connected to the living room with a built-in pass-through. The dining room has a wide built-in cabinet for storage and display. A wide front porch invites you to relax and enjoy the neighborhood.

Features of the Design

- 1,722 Square Feet
- 36'-10"W x 46'-8"L
- 3 Bedrooms
- 2 Bathrooms



Ground Floor Plan