

# THE CARMELINA

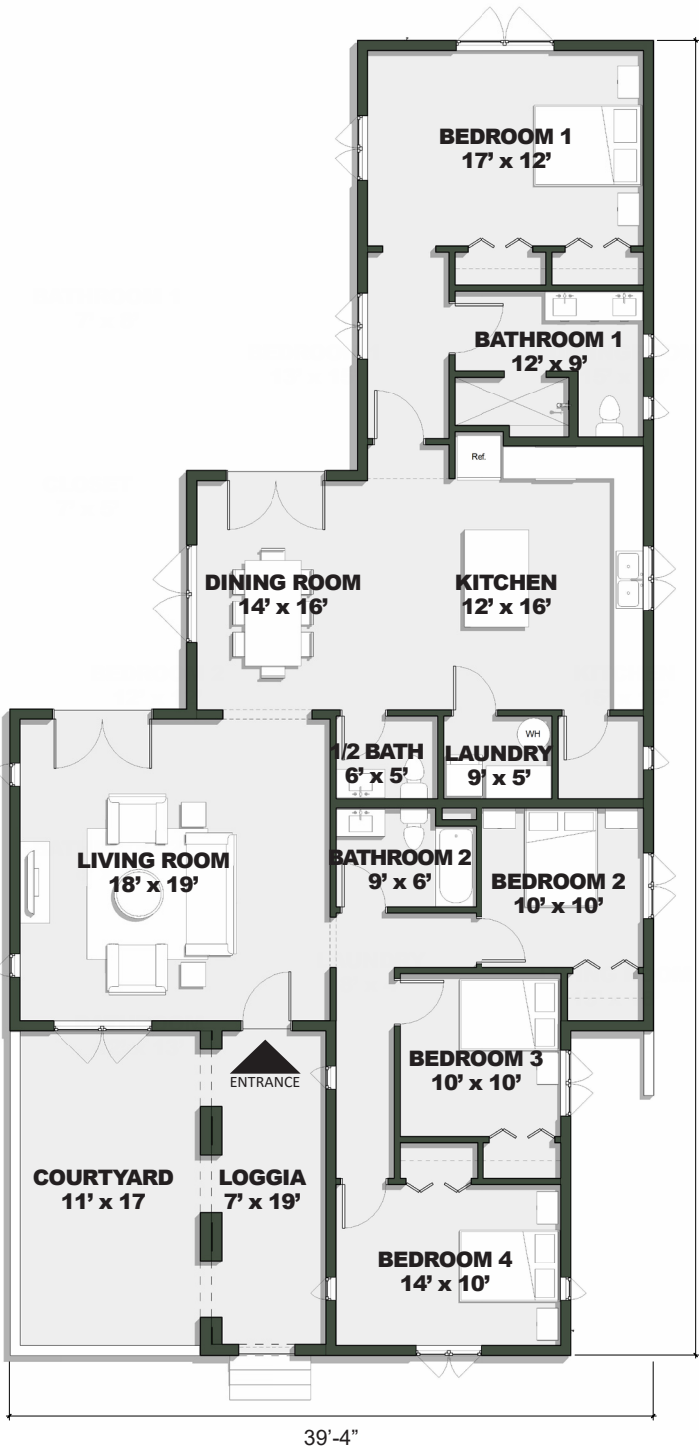
concept design by Daniel J. Kiser



The Carmelina captures the enduring charm of Spanish Colonial Revival architecture. The house is entered through a covered porch that opens into a vaulted living room. The primary suite is thoughtfully positioned on the opposite side of the house from the secondary bedrooms, creating a natural buffer that enhances privacy between kids, guests, and the main suite. The Carmelina is also available in the California Ranch style (“The Maybrook”) and the Tudor style (“The Cromwell”).

Features of the Design

- 39’-4”W x 80’-6”L
- 1,960 Square Feet
- Four Bedrooms
- Two and a Half Bathrooms
- Detached Garage



Ground Floor Plan