

THE MARLOWE

concept design by Elizabeth Mullally

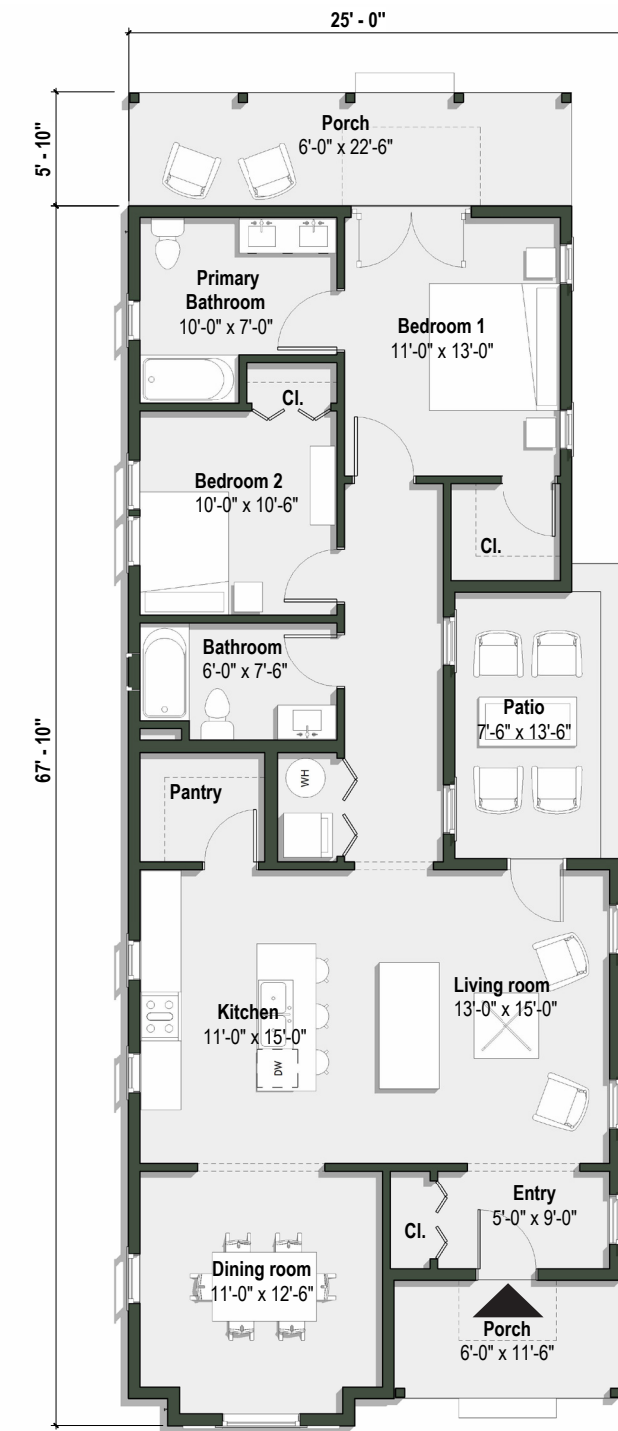
THE FOOTHILL CATALOG
FOUNDATION



Traditional Tudor curb appeal meets a modern floor plan in the Marlowe. It offers effortless living flexibility that extends beyond its footprint. The house features a dining room and a spacious kitchen with a pantry. The living room opens onto a side courtyard that, combined with the rear porch, promotes true California indoor/outdoor living. The Marlowe was designed with narrow lots in mind while still providing ample living space running the length of its plot. This floor plan is also available as a Ranch style home (“The Billy”).

Features of the Design

- 1,296 Square Feet
- 25’-0”W x 67’-10”L
- 2 Bedrooms
- 2 Bathroom(s)



Ground Floor Plan