

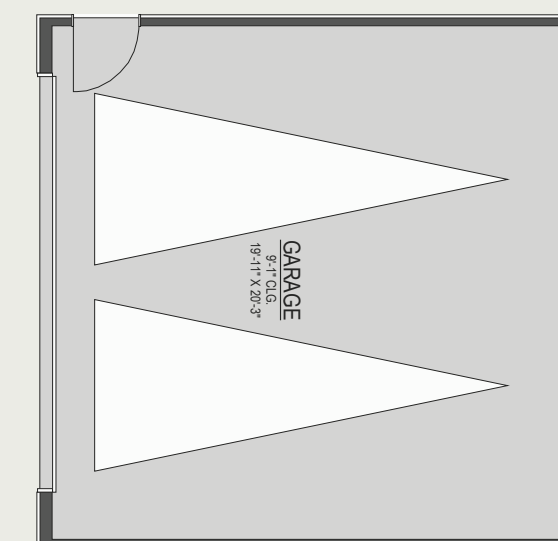
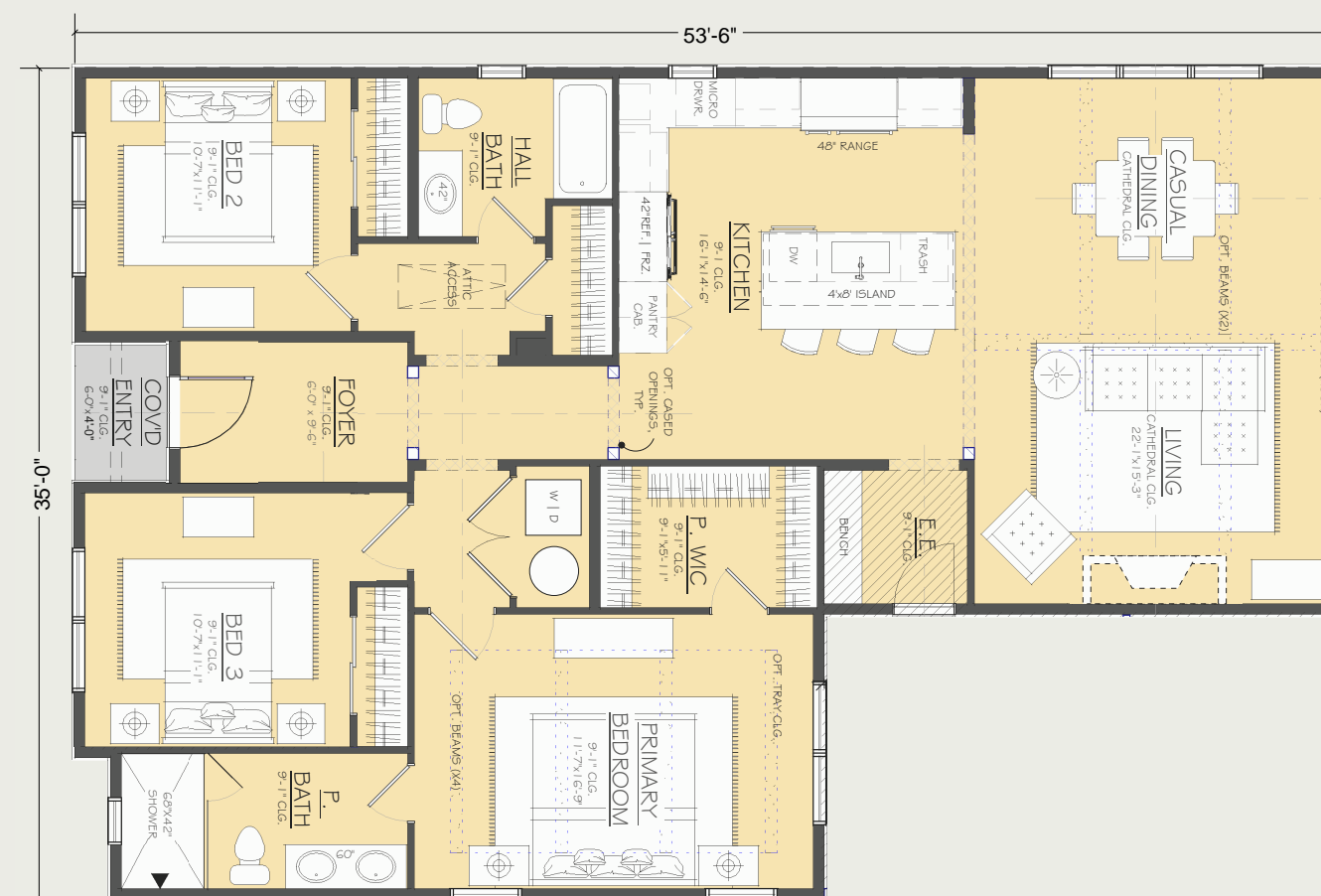
The Loma

1,561 SQ FT

3
BEDS

2
BATHS

2
CAR GARAGE
(DETACHED)



Options

- Single story design with open floor plan
- Fireplace centered on living room (optional)
- Enhanced vaulted ceilings in living room and primary bedroom
- Three exterior elevation styles
- Homeowner personalization options on interior finishes and exterior colors
- Detached garage to ADU conversion (optional)
- Fire resistant construction per Wildfire Prepared Home Plus Program of IBHS
- Fixed price contract with full service design build construction team
- In-house team includes insurance claim advisor, architectural & interior design team & permit processor
- CA General Contractors License



Jane's Cottage

Inspired by Jane's Cottage typology, the design reinterprets the regional Storybook Revival style, blending Altadena's historic charm with modern building techniques and energy efficiency. A steeply pitched front gable anchors the asymmetrical, intimate massing, while secondary gables and shed dormers create layered rooflines and a playful, balanced streetscape presence. Natural materials and thoughtful detailing enhance its timeless appeal. The result is a design that feels both rooted in tradition and perfectly suited for contemporary living.



Spanish

Blending the elegance of Spanish Colonial Revival architecture with a contemporary sensibility, honoring Altadena's climate, culture, and historic character. Inspired by early California missions and Mediterranean design, it showcases stucco walls, clay tile roofing, and hand-forged details, paired with modern functionality, energy efficiency, and current code standards. The result is a home that feels both timeless and tailored for modern living.



Craftsman

This Craftsman-style elevation reflects Altadena's Arts and Crafts-era heritage, drawing from early California Bungalows and the legacy of Greene & Greene. Emphasizing natural materials, expressive structure, and handcrafted detail, it balances architectural authenticity with modern living. Set against the San Gabriel Mountains, the home feels warm, durable, and in harmony with its landscape and neighborhood. Thoughtful proportions and detailing create a timeless presence on the street.

