

# The Echo

2,757  
SQ FT

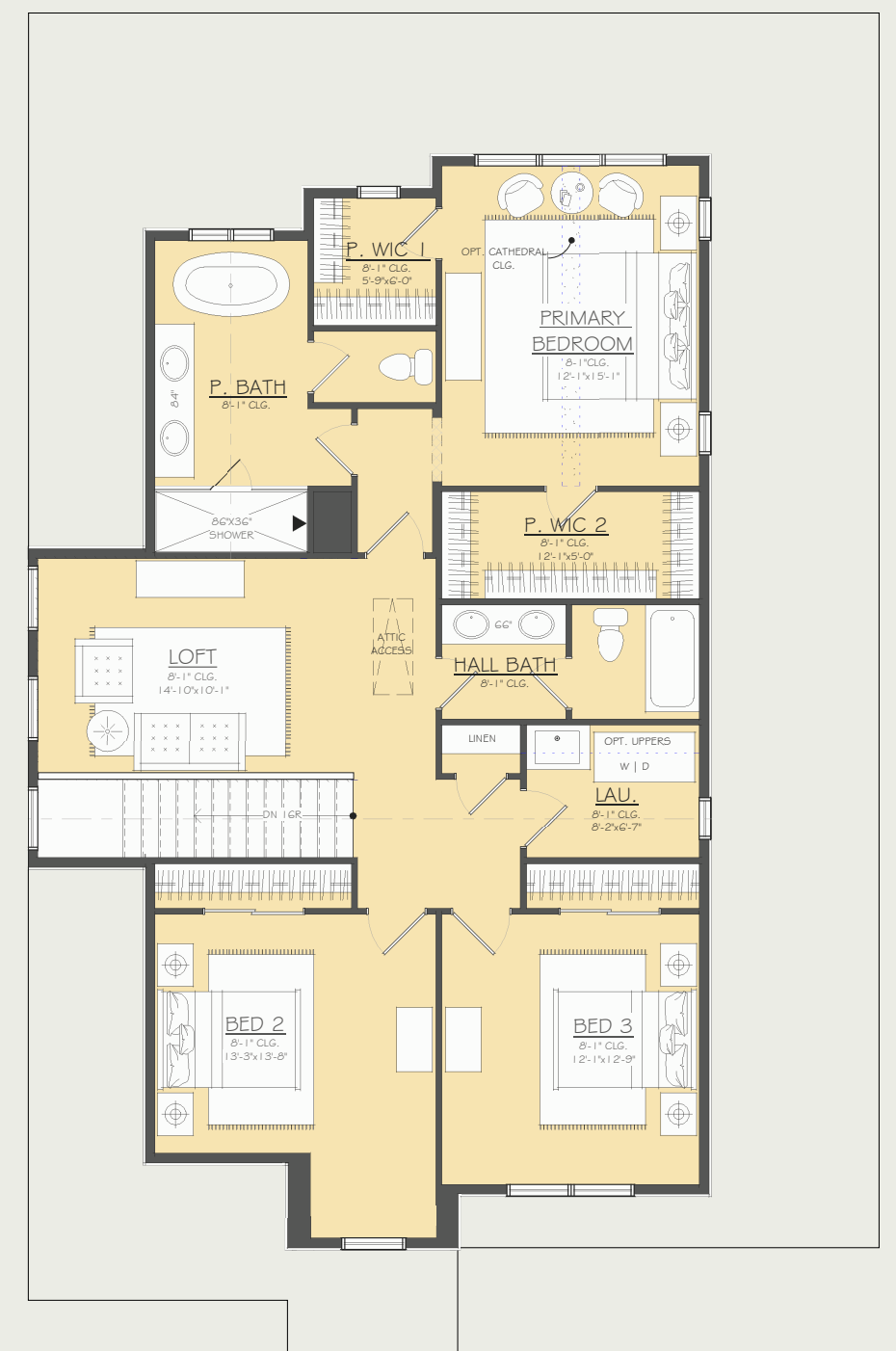
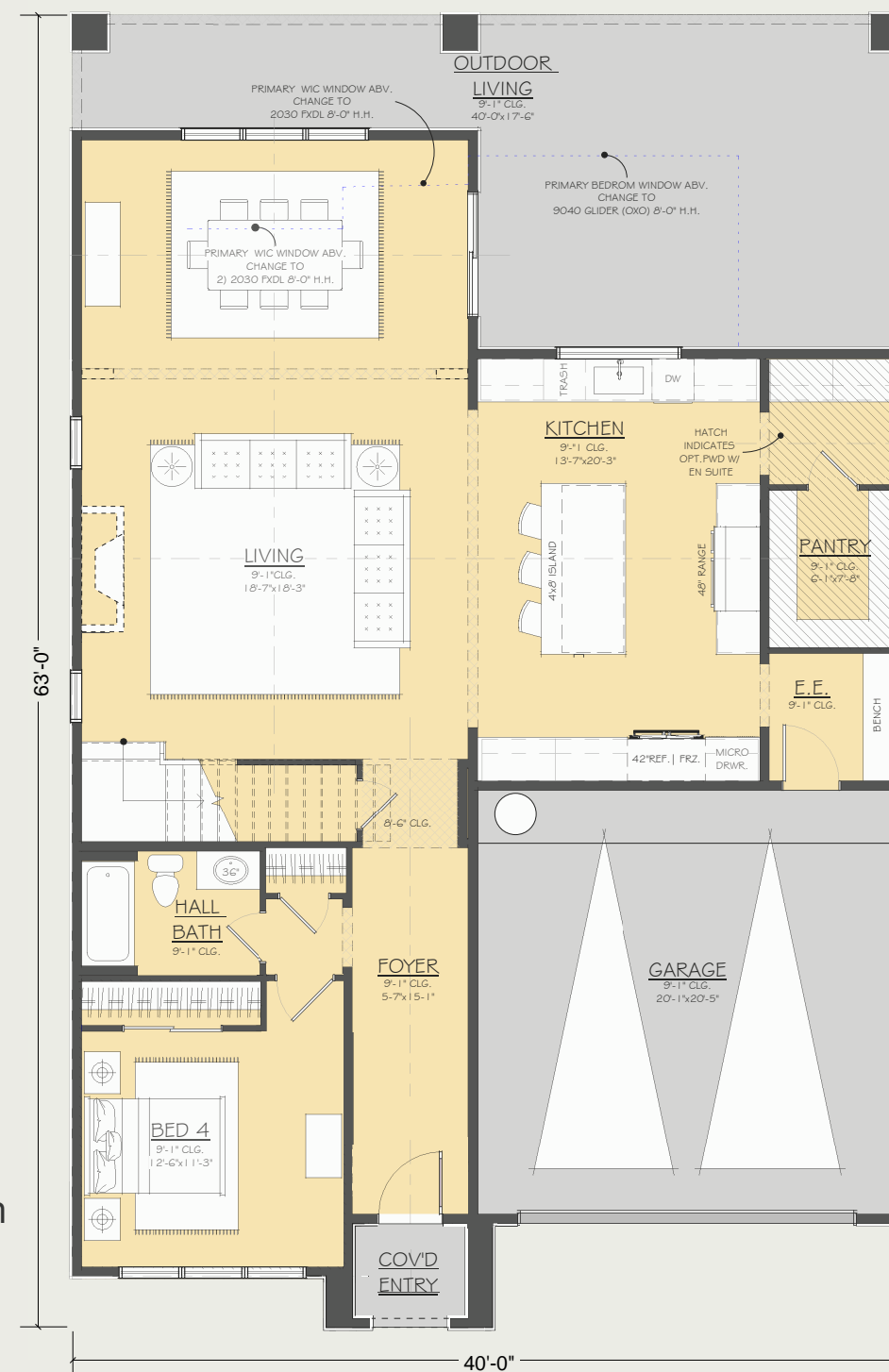
4  
BEDS

3  
BATHS

2  
CAR GARAGE

## Options

- Two story design with open floor plan
- Upstairs loft for office or additional bedroom
- Three exterior elevation styles
- Homeowner personalization options on interior finishes and exterior colors
- Detached ADU (optional)
- CA General Contractors License
- Fire resistant construction per Wildfire Prepared Home Plus Program of IBHS
- Fixed price contract with full service design build construction team
- In-house team includes insurance claim advisor, architectural & interior design team & permit processor



Jane's Cottage

Reinterpreting the Jane's Cottage typology, the elevation blends the regional Storybook Revival style with Altadena's historic charm, modern building techniques, and energy efficiency. A steeply pitched front gable anchors the asymmetrical, intimate massing, while secondary gables and shed dormers add layered rooflines and subtle articulation for a playful, balanced streetscape presence. Natural materials and detailing enhance its timeless, storybook appeal.



Spanish

Blending the elegance of Spanish Colonial Revival architecture with a contemporary sensibility, honoring Altadena's climate, culture, and historic fabric. Inspired by early California missions and Mediterranean design, it features stucco massing, clay tile roofing, and hand-forged details, paired with modern functionality and energy efficiency. The result is a home that feels both timeless and perfectly suited for modern living.



Craftsman

This Craftsman-style elevation reflects Altadena's Arts and Crafts heritage, drawing from early California Bungalows and the legacy of Greene & Greene. Emphasizing natural materials, expressive structure, and handcrafted details, it balances architectural authenticity with modern living. Set against the San Gabriel Mountains, the home feels warm, durable, and in harmony with its landscape and neighborhood. Thoughtful proportions and detailing create a timeless, inviting presence.

