

THE BILLY

concept design by Elizabeth Mullally

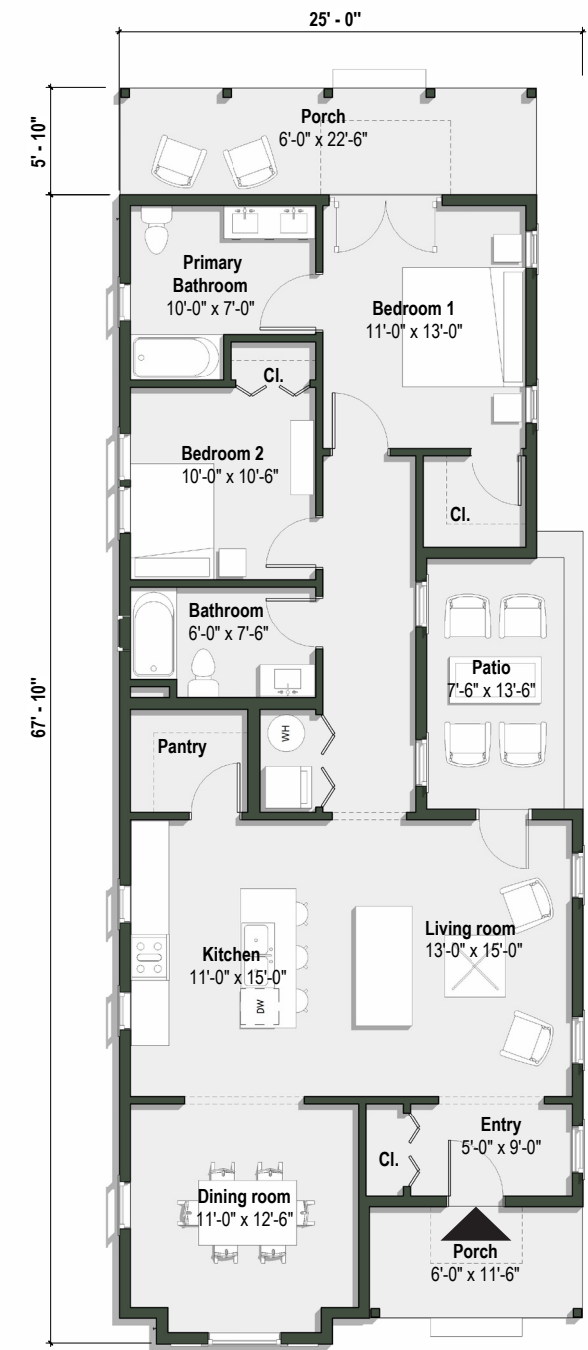
THE FOOTHILL CATALOG
FOUNDATION



California Ranch curb appeal meets a modern floor plan in the Billy. The house features a dining room and a spacious kitchen with a pantry. The living room opens onto a side courtyard that, combined with the rear porch, promotes true California indoor/outdoor living. The Billy was designed with narrow lots in mind while still providing ample living space running the length of its plot. This floor plan is also available as a Tudor style home (“The Marlowe”).

Features of the Design

- 25’-0”W x 67’-10”L
- 1,296 Square Feet
- Two Bedrooms
- Two Bathrooms
- Detached Garage



Ground Floor Plan