



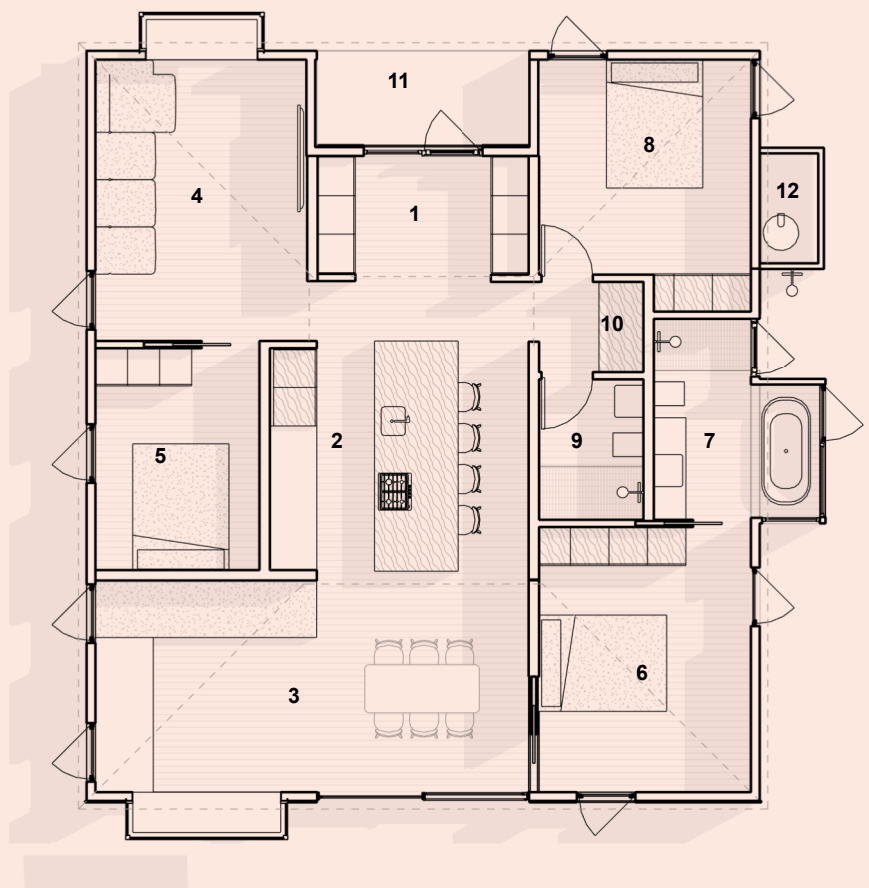
Atrium House

The Atrium house places the kitchen at the center of the home. A clerestory roof area above incorporates an operable skylight and windows for plenty of natural light and releases excess heat during hot summer months. The primary living areas and bedrooms sit at each of the 4-corners of the plan maximizing light and views from these rooms

Floor Area: 1420 sf
 Footprint: 38'-4" x 43'-0"
 Single-Story
 Ceiling Height: 9ft - 12ft
 3 Bed, 2 Bath

Floor Plan
 1" = 10'-0"

- 1 Entry
- 2 Kitchen
- 3 Living/ Dining
- 4 Den
- 5 Bedroom
- 6 Primary Bed
- 7 Primary Bath
- 8 Bedroom
- 9 Bathroom
- 10 Hall
- 11 Front porch
- 12 Mechanical closet



Taalman Architecture / IT House Inc
 1807 Blake Ave, Los Angeles
 213-380-1060 / inquiry@ithouseinc.com