

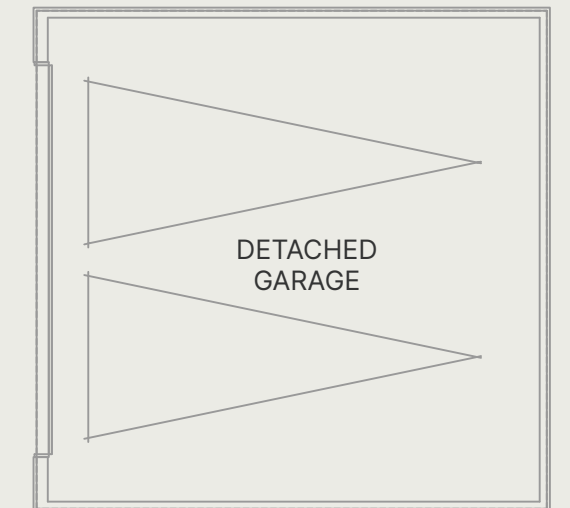
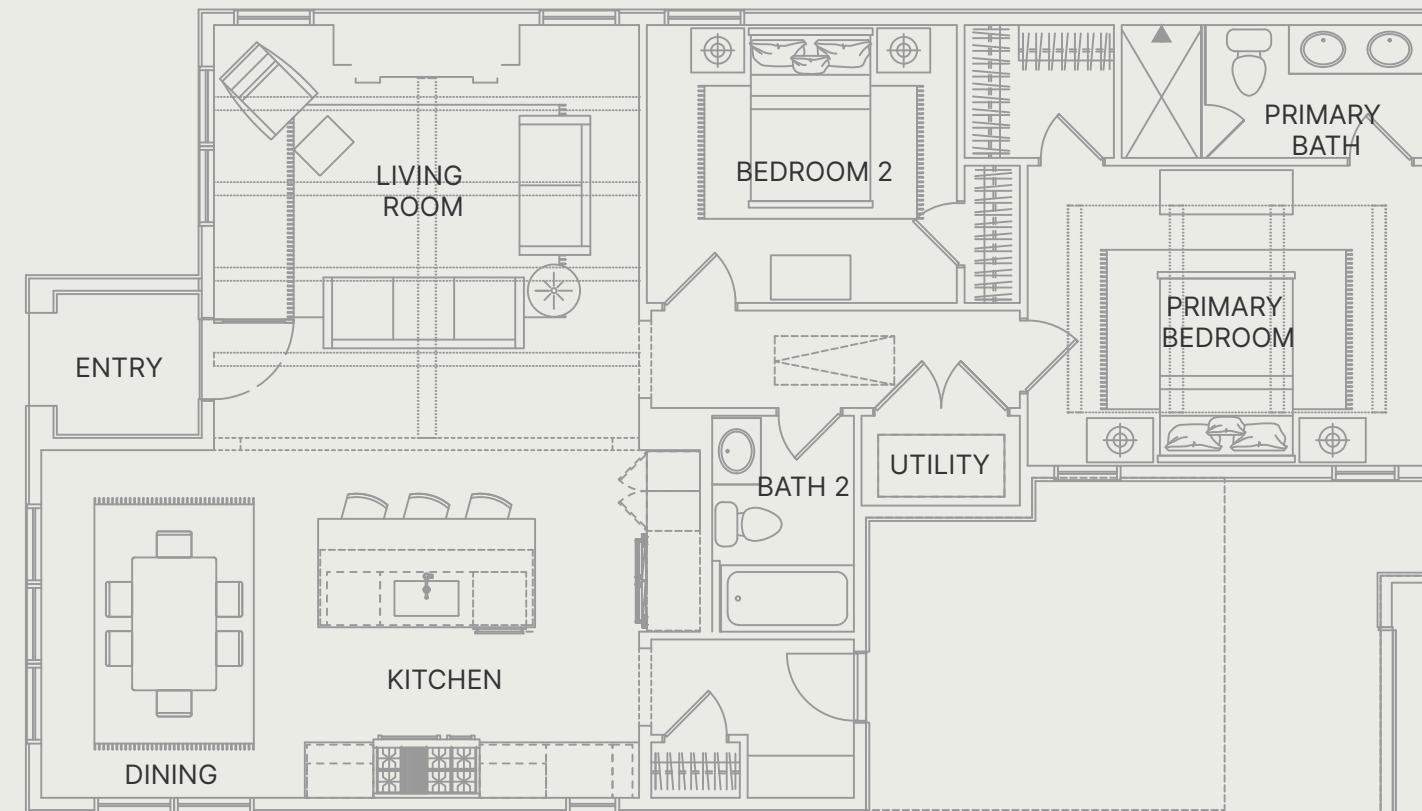
# Plan 1

1,227 SQ FT

2  
BEDS

2  
BATHS

2  
CAR GARAGE  
(DETACHED)



## Plan Features

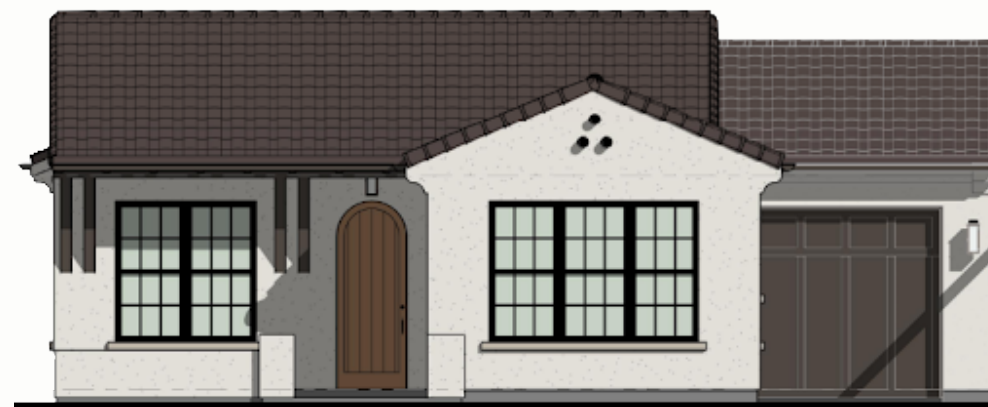
- Single story design with open floor plan
- Fireplace centered on living room (optional)
- Enhanced vaulted ceilings in living room and primary bedroom
- Three exterior elevation styles
- Homeowner personalization options on interior finishes and exterior colors
- Detached garage to ADU conversion (optional)
- Fire resistant construction per Wildfire Prepared Home Plus Program of IBHS
- Fixed price contract with full service design build construction team
- In-house team includes insurance claim advisor, architectural & interior design team & permit processor
- CA General Contractors License



### Jane's Cottage

Inspired by the Jane's Cottage typology, this home reimagines the Storybook Revival style to reflect Altadena's historic charm and natural surroundings. It nods to early 20th-century romantic architecture found in LA and Pasadena, blending classic elements with modern construction and energy efficiency.

A steep front-facing gable anchors the asymmetrical massing, creating a vertical focal point and a cozy, playful presence. Secondary gables and dormers add depth and break up the roofline with subtle articulation.



### Spanish

This design captures the elegance of Spanish Colonial Revival architecture, reimagined with a contemporary touch to harmonize with Altadena's climate, culture, and historic character. Rooted in the traditions of early California missions and Mediterranean design, this elevation expresses a sense of permanence, craftsmanship, and connection to the natural surroundings.

The design reflects a timeless architectural heritage, celebrating stucco massing, clay tile roofing, and hand-forged detailing, while integrating current code standards, modern functionality, and energy efficiency.



### Craftsman

Rooted in Altadena's Arts and Crafts-era heritage, the Craftsman-style home blends early 20th-century bungalow charm with modern functionality. Inspired by Greene & Greene, it emphasizes natural materials, expressive structure, and handcrafted details.

Designed to feel warm and grounded, the home sits comfortably within its landscape and community, echoing the character of the San Gabriel Mountains backdrop.



[www.homebound.com/la-fire-recovery](http://www.homebound.com/la-fire-recovery)