

HomeNº3



by SuperLA®

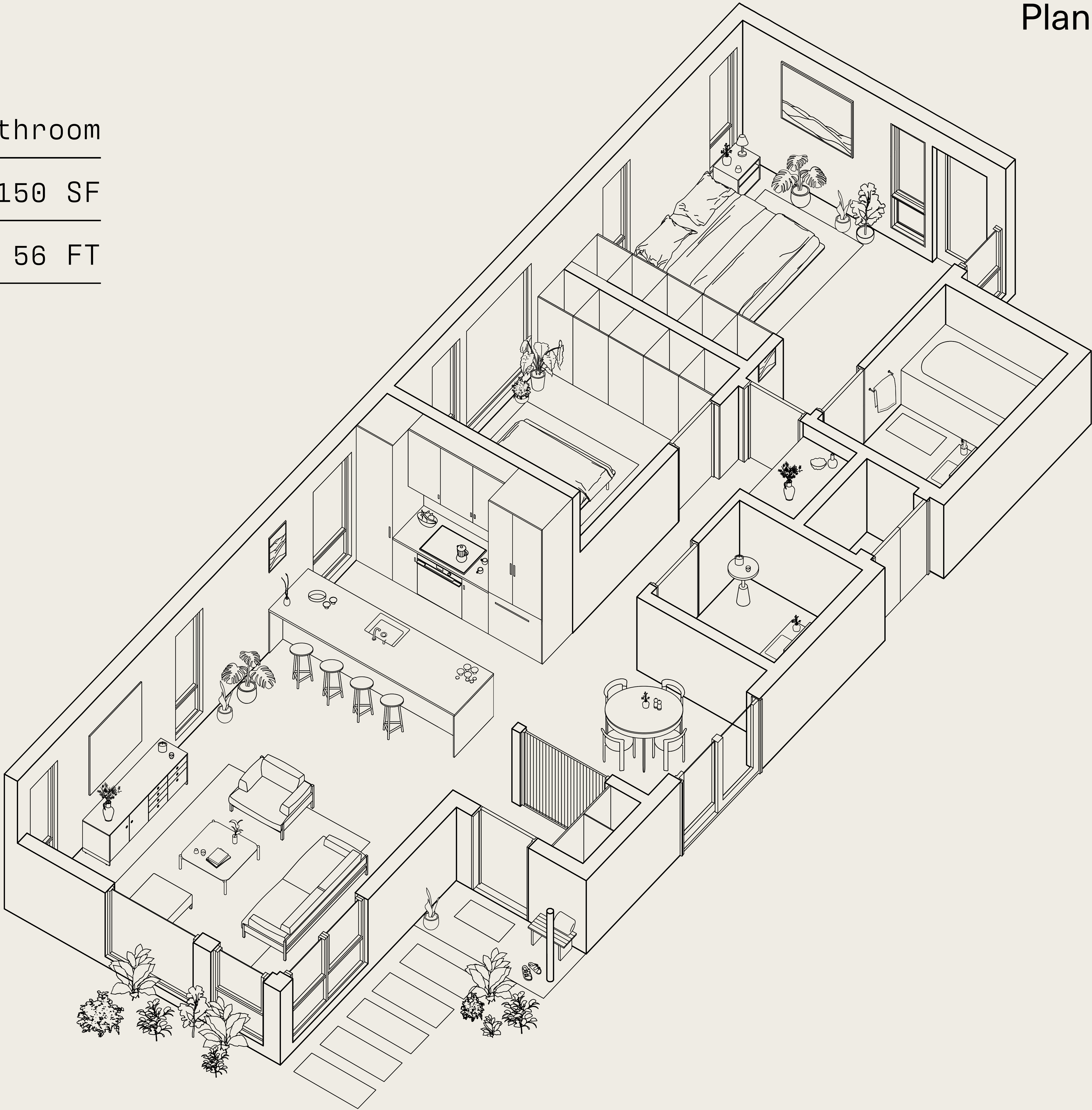
W: [super.la](https://super.la) E: [team@super.la](mailto:team@super.la)

HomeN°3

Plan

Space:	Two Bedroom + One & 1/2 Bathroom
Home SF:	≈ 1,150 SF
Home Footprint:	≈ 23 FT x 56 FT

Introducing HomeN°3 by SuperLA® – designed for your well-being and built for Los Angeles using planet-friendly materials + practices. The third in a series of single-family homes, HomeN°3 features two bedrooms and one & 1/2 bathrooms, spread across 1,150 SF.



by **SuperLA®**

HomeNº3

Plan

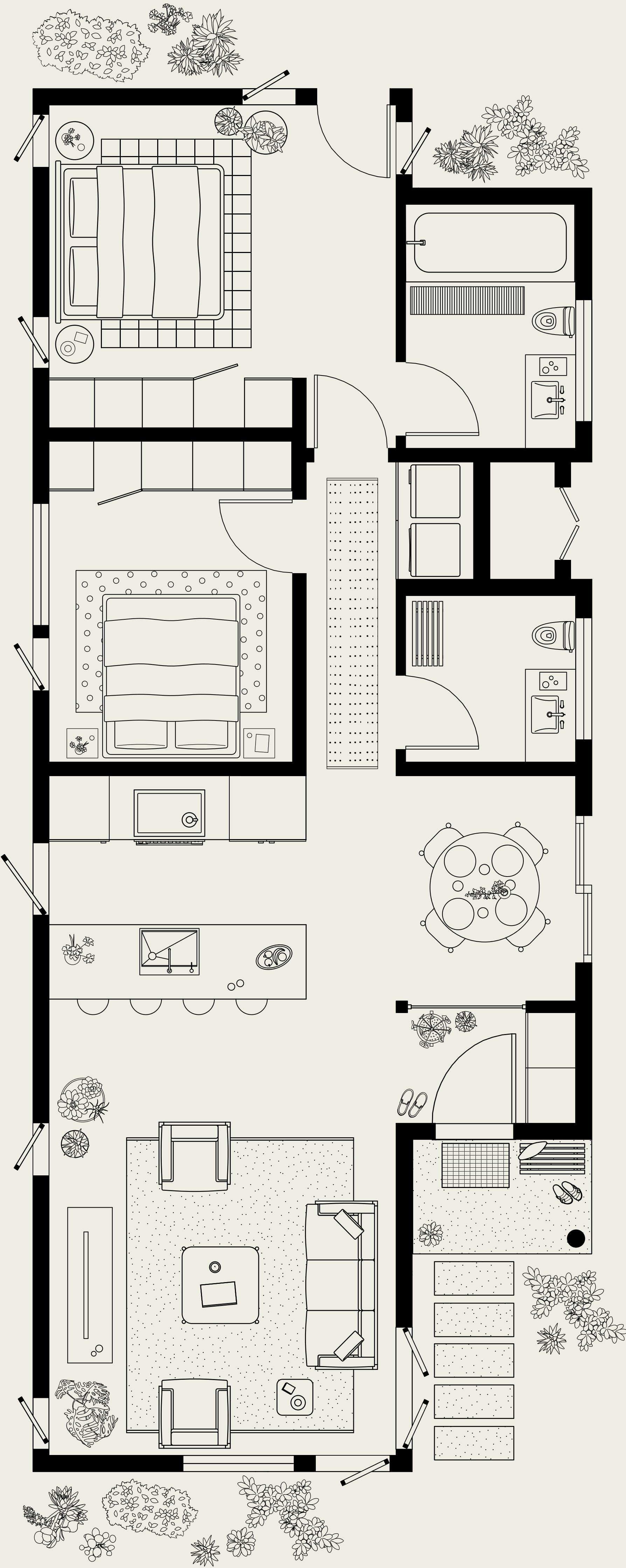
Primary Bedroom

Secondary Bedroom

Open Kitchen

Breakfast Bar

Living Room



Outdoor Access

Primary Bathroom

Laundry + Utility

1/2 Bath

Dining Room + Slider

Glass Partition

Entry Closet

Entry Landing

by **SuperLA®**



HomeNº3

Exterior

by **SuperLA®**



Disclaimer: Visuals for HomeN° are conceptual and intended as a design guide. Final finishes, materials, layout, and other elements may vary from what is shown in this presentation.

HomeN°3

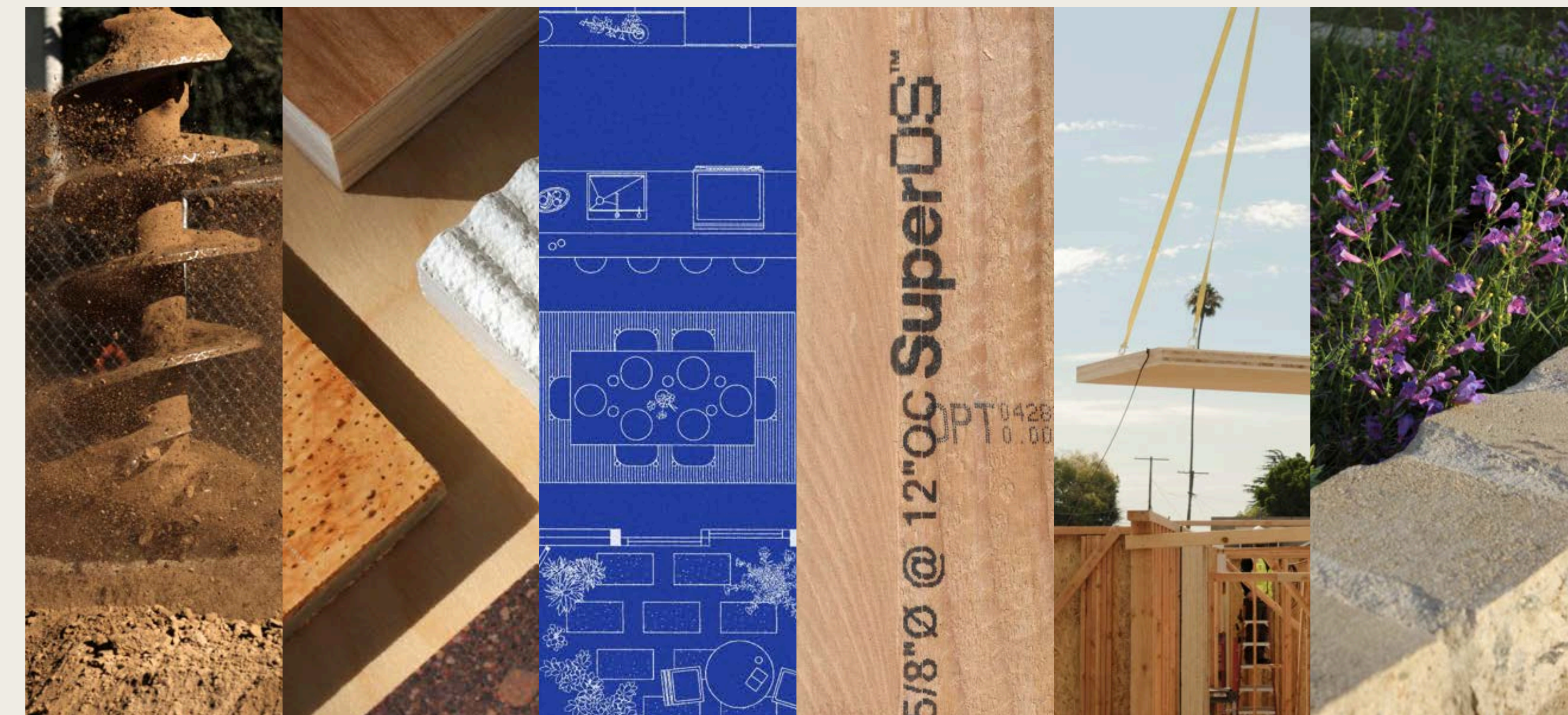
Entry

by **SuperLA®**

# HomeNº3

## From design to delivery. A process built for you.

by **SuperLA®**



1. 2. 3. 4. 5. 6.

### Process

As the architect, designer, and builder, SuperLA® serves as your single point of contact, managing every aspect of your rebuild from start to finish. Our streamlined process simplifies design and permitting with thoughtfully pre-designed homes, while our panelized building system ensures a faster construction timeline.

You pick which SuperLA® Home product you would like on your property, we take care of the rest.

W: [super.la](https://super.la)

E: [team@super.la](mailto:team@super.la)