



# THE FOOTHILL CATALOG FOUNDATION

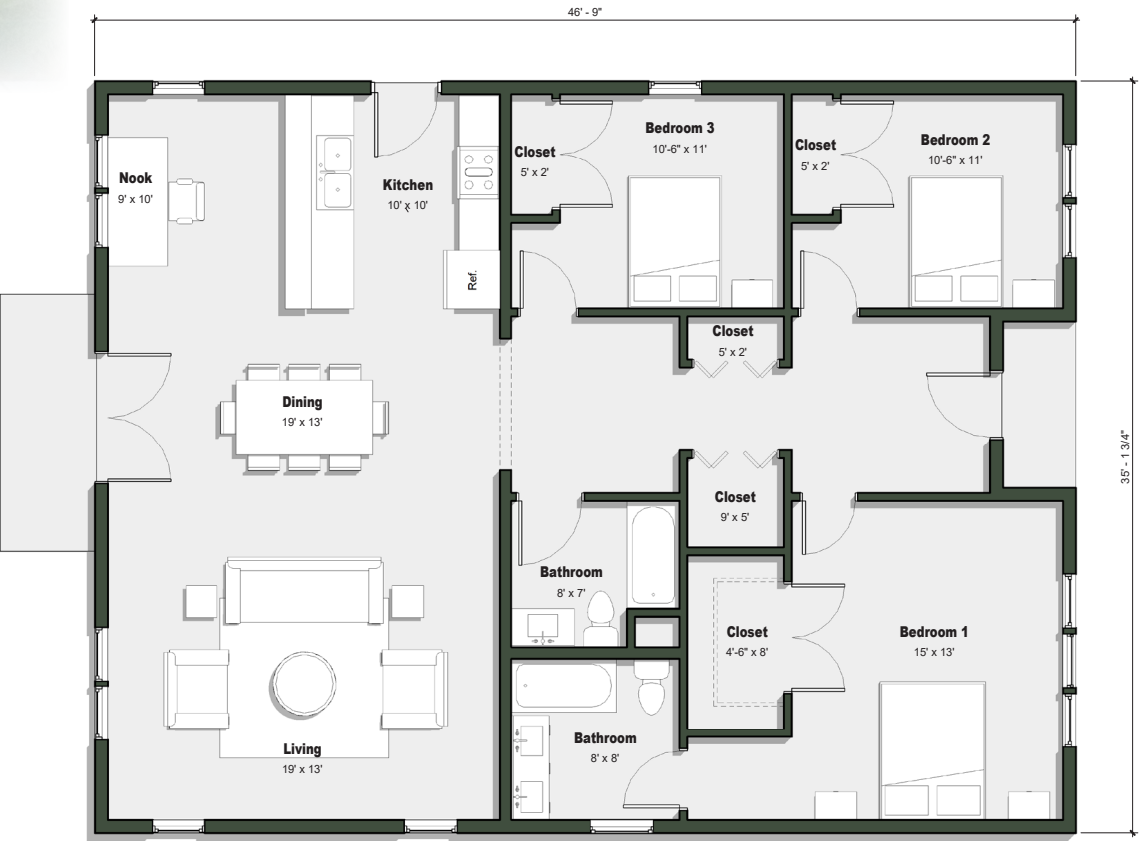
## *Features of The Gregory*

- 1,600 square feet
- 35' X 47' footprint
- 3 bedrooms, 2 full bathrooms
- Spacious master suite
- Office area
- Detached carport / 2-car garage

# THE GREGORY

*concept design by Lyse Messmer*

The Gregory blends the aesthetic of mid-century modern design with contemporary flexibility and sustainability. The metal roof and lack of eaves decreases the house’s fire risk. Taking a page out of turn-of-the-century architecture, every living space has a cross-breeze, small spaces are tucked away for extra-domestic use, and vaulted ceilings give the home character. At the East and West exposures, window seat alcoves act as internal eaves, sheltering the living space from hot sunlight in the summer and letting in the heat in the winter. All off these features will save air conditioning and heating costs in the future, while costing very little to implement today.



GROUND FLOOR PLAN