



THE FOOTHILL CATALOG FOUNDATION

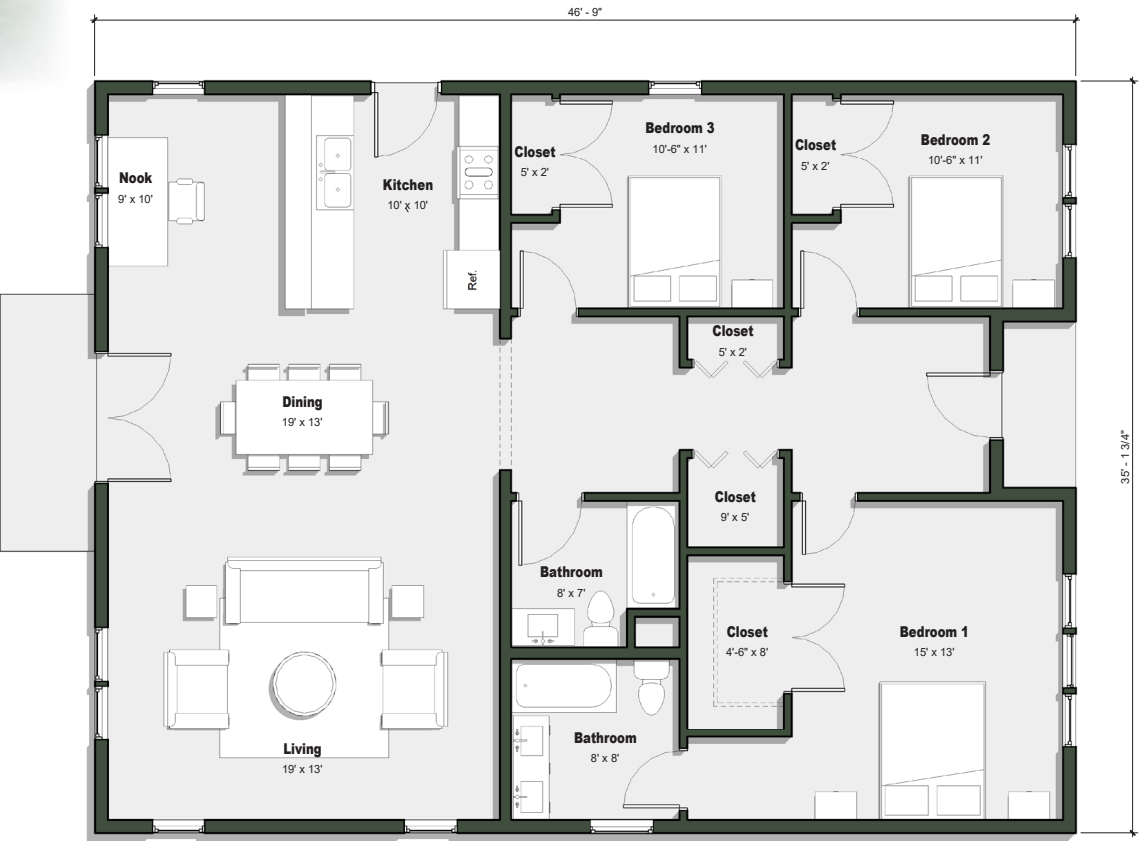
Features of The Elizabeth

- 1,600 square feet
- 35' X 47' footprint
- 3 bedrooms, 2 full bathrooms
- Spacious master suite
- Office area
- Detached carport / 2-car garage

THE ELIZABETH

concept design by Lyse Messmer

The Future Proof Tudor retains the character of an English cottage, while adapting materials and interior architecture for a changing climate and modern amenities. The metal roof and lack of eaves decreases the house’s fire risk. Taking a page out of turn-of-the-century architecture, every living space has a cross-breeze, small spaces are tucked away for extra-domestic use, and vaulted ceilings give the home character. At the East and West exposures, window seat alcoves act as internal eaves, sheltering the living space from hot sunlight in the summer and letting in the heat in the winter. All off these features will save air conditioning and heating costs in the future, while costing very little to implement today.



GROUND FLOOR PLAN