

Residence 5 – California Bungalow

2000 sf | 4 Bedrooms | 3.5 Baths | 2 Car Garage

This charming two-story Traditional home honors the timeless beauty of classic American design while embracing the needs of today's families. Preserving the graceful symmetry and proportions that make these homes so enduring and beloved, this architectural design feels both familiar and fresh. Every detail reflects our deep appreciation for the architectural traditions that have shaped America's most cherished neighborhoods – the kind of places where families put down roots and communities flourish naturally across generations.

Our Turn Key Solution:

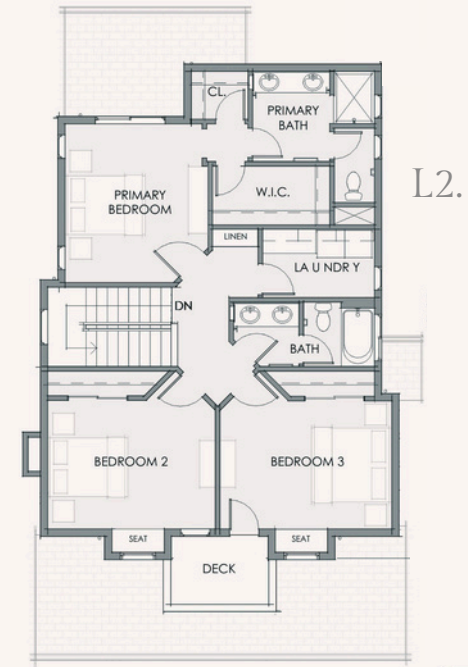
- LA County pre-approved designs
- Fixed pricing & 12 month build schedule
- Full-service construction management
- Fire-resistant home features
- Designer appointed interior finishes
- 2-10 year warranty for long-term protection



ARCHITECTURAL RENDERINGS ARE CONCEPTUAL REPRESENTATIONS ONLY
The architectural renderings, elevations, and visual representations shown are artistic interpretations and conceptual designs intended to convey the general character and style of Genesis Builders homes. These images are not construction documents and should not be relied upon as exact representations of the final constructed home.

PLAN FEATURES:

- Two-story open floor plan
- Spacious laundry room
- Large front porch
- Optional fireplace
- Closets throughout the home for additional storage
- Kitchen with pantry and island with counter seating
- Primary bedroom with ensuite bathroom and walk-in closet
- Optional private deck from primary bedroom
- Optional Accessory Dwelling Unit (not shown on plan)



Room size, walls, windows, doors, porches, decks, ceiling height vary per home location and elevation. Plans subject to change without notice. Genesis Builders homes meet the Los Angeles County Residential Design Standards (RDS) Ordinance and satisfy The Altadena Community Standards District requirements
CSLB #738938.

Home Features

All included in our Fixed Price!

GENERAL

CODE-COMPLIANT CONSTRUCTION

Built to 2022 (2025) safety and building codes.

MEET ENERGY STANDARDS

Exceeds 2022 CA energy standards for lower bills and higher comfort.

3KW SOLAR PANELS

Rooftop all black Tier 1 Monocrystalline Solar Modules and inverter producing 3.12 kW.

INTERIORS

ENERGY STAR APPLIANCES

Includes range, under cabinet hood, built-in microwave, dishwasher, fridge, washer and dryer.

HEAT PUMP WATER HEATER

Efficient, long-lasting, all-electric water heating.

PLUMBING SYSTEM

PEX piping throughout.

INSULATION STANDARDS

R-21 Batt wall insulation and R-38 attic insulation for better energy performance.

ALL ELECTRIC HOME*

200 amp panel with subpanels for future upgrades.

*Gas appliances option available

INTERIOR FIRE SPRINKLER

NFPA-13D concealed sprinklers throughout.

HEAT PUMP HVAC SYSTEM

3–4 Ton electric system heats and cools efficiently.

LED LIGHTING

All-LED recessed lighting with smart controls.

HEALTHIER INDOOR ENVIRONMENT

Low-VOC materials, advanced filtration, and ventilation.

EXTERIORS

CONCRETE PATIOS & PORCHES

Fire-resistant and protects against ember ignition.

PERIMETER FENCING

6 ft vinyl fencing per lot layout. Typical 6 ft perimeter fencing around side and yards.

DUAL PANE WINDOW AND SLIDERS

Milgard Style Line V250 Series Vinyl windows and sliders in colors per plan style.

STUCCO SIDING*

Non-combustible and fire-resistant.

*Only for Mediterranean Revival and Social Traditional Architectural Style.

FIBER CEMENT SIDING

James Hardie fire-resistant & non-combustible exterior cladding in multiple styles and colors per plan.

HARDSCAPE/ LANDSCAPE

Basic frontyard landscaping and driveway hardscaping.

SLAB-ON-GRADE OR RAISED FOUNDATION

Slab is ideal for flat, stable lots. Raised suits sloped terrain and allows easier utility access. *Based on lot conditions.

ROOF TYPE (SHINGLES)*

Class-A fire-rated, durable, and energy efficient.

GAF Timberline HDZ composition roof shingles with O'hagin roof vents.

ROOF TYPE (CONCRETE)*

Class-A fire-rated, durable, and energy efficient.

S-shape clay colored, concrete roof tiles with O'hagin roof vents.

*Mediterranean Revival style only

