

Residence 1 – Foothill Craftsman

1250 sf | 3 Bedrooms | 2 Baths | 2 Car Garage

Inspired by Southern California's craftsman heritage, this 1250 SF home showcases the movement's emphasis on honest materials and handcrafted details. The characteristic gabled roof and sprawling front porch create the signature craftsman silhouette, while the open floor plan maintains the style's connection to outdoor living. Built-in storage and vaulted ceilings reflect the craftsman tradition of functional beauty that became iconic throughout the region.

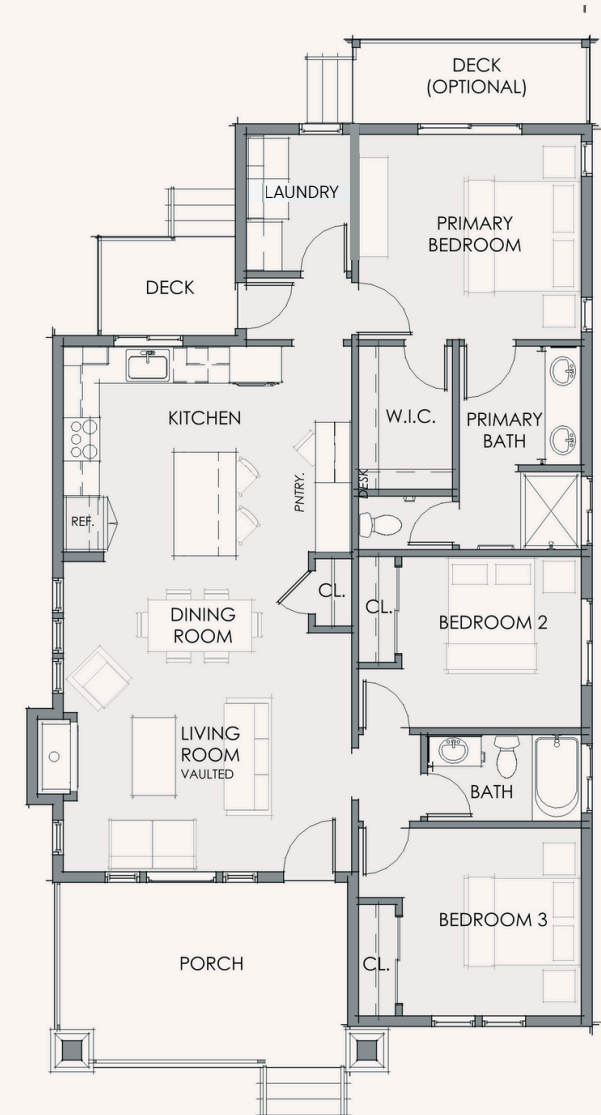
Our Turn Key Solution:

- LA County pre-approved designs
- Fixed pricing & 12 month build schedule
- Full-service construction management
- Fire-resistant home features
- Designer appointed interior finishes
- 2-10 year warranty for long-term protection



PLAN FEATURES:

- Single-story open floor plan
- Vaulted ceiling in living room
- Spacious laundry room
- Large front porch
- Optional fireplace
- Closets throughout the home for additional storage
- Kitchen with pantry, desk, and island with counter seating
- Primary bedroom with ensuite bathroom and walk-in closet
- Optional private deck from primary bedroom
- Optional Accessory Dwelling Unit (not shown on plan)



Room size, walls, windows, doors, porches, decks, ceiling height vary per home location and elevation. Plans subject to change without notice. Genesis Builders homes meet the Los Angeles County Residential Design Standards (RDS) Ordinance and satisfy The Altadena Community Standards District requirements

CSLB #738938.

Home Features

All included in our Fixed Price!

GENERAL

CODE-COMPLIANT CONSTRUCTION

Built to 2022 (2025) safety and building codes.

MEET ENERGY STANDARDS

Exceeds 2022 CA energy standards for lower bills and higher comfort.

3KW SOLAR PANELS

Rooftop all black Tier 1 Monocrystalline Solar Modules and inverter producing 3.12 kW.

INTERIORS

ENERGY STAR APPLIANCES

Includes range, under cabinet hood, built-in microwave, dishwasher, fridge, washer and dryer.

HEAT PUMP WATER HEATER

Efficient, long-lasting, all-electric water heating.

PLUMBING SYSTEM

PEX piping throughout.

INSULATION STANDARDS

R-21 Batt wall insulation and R-38 attic insulation for better energy performance.

ALL ELECTRIC HOME*

200 amp panel with subpanels for future upgrades.

*Gas appliances option available

INTERIOR FIRE SPRINKLER

NFPA-13D concealed sprinklers throughout.

HEAT PUMP HVAC SYSTEM

3-4 Ton electric system heats and cools efficiently.

LED LIGHTING

All-LED recessed lighting with smart controls.

HEALTHIER INDOOR ENVIRONMENT

Low-VOC materials, advanced filtration, and ventilation.

EXTERIORS

CONCRETE PATIOS & PORCHES

Fire-resistant and protects against ember ignition.

PERIMETER FENCING

6 ft vinyl fencing per lot layout. Typical 6 ft perimeter fencing around side and yards.

DUAL PANE WINDOW AND SLIDERS

Milgard Style Line V250 Series Vinyl windows and sliders in colors per plan style.

STUCCO SIDING*

Non-combustible and fire-resistant.

*Only for Mediterranean Revival and Social Traditional Architectural Style.

FIBER CEMENT SIDING

James Hardie fire-resistant & non-combustible exterior cladding in multiple styles and colors per plan.

HARDSCAPE/ LANDSCAPE

Basic frontyard landscaping and driveway hardscaping.

SLAB-ON-GRADE OR RAISED FOUNDATION

Slab is ideal for flat, stable lots. Raised suits sloped terrain and allows easier utility access. *Based on lot conditions.

ROOF TYPE (SHINGLES)*

Class-A fire-rated, durable, and energy efficient.

GAF Timberline HDZ composition roof shingles with O'hagin roof vents.

ROOF TYPE (CONCRETE)*

Class-A fire-rated, durable, and energy efficient.

S-shape clay colored, concrete roof tiles with O'hagin roof vents.

*Mediterranean Revival style only

