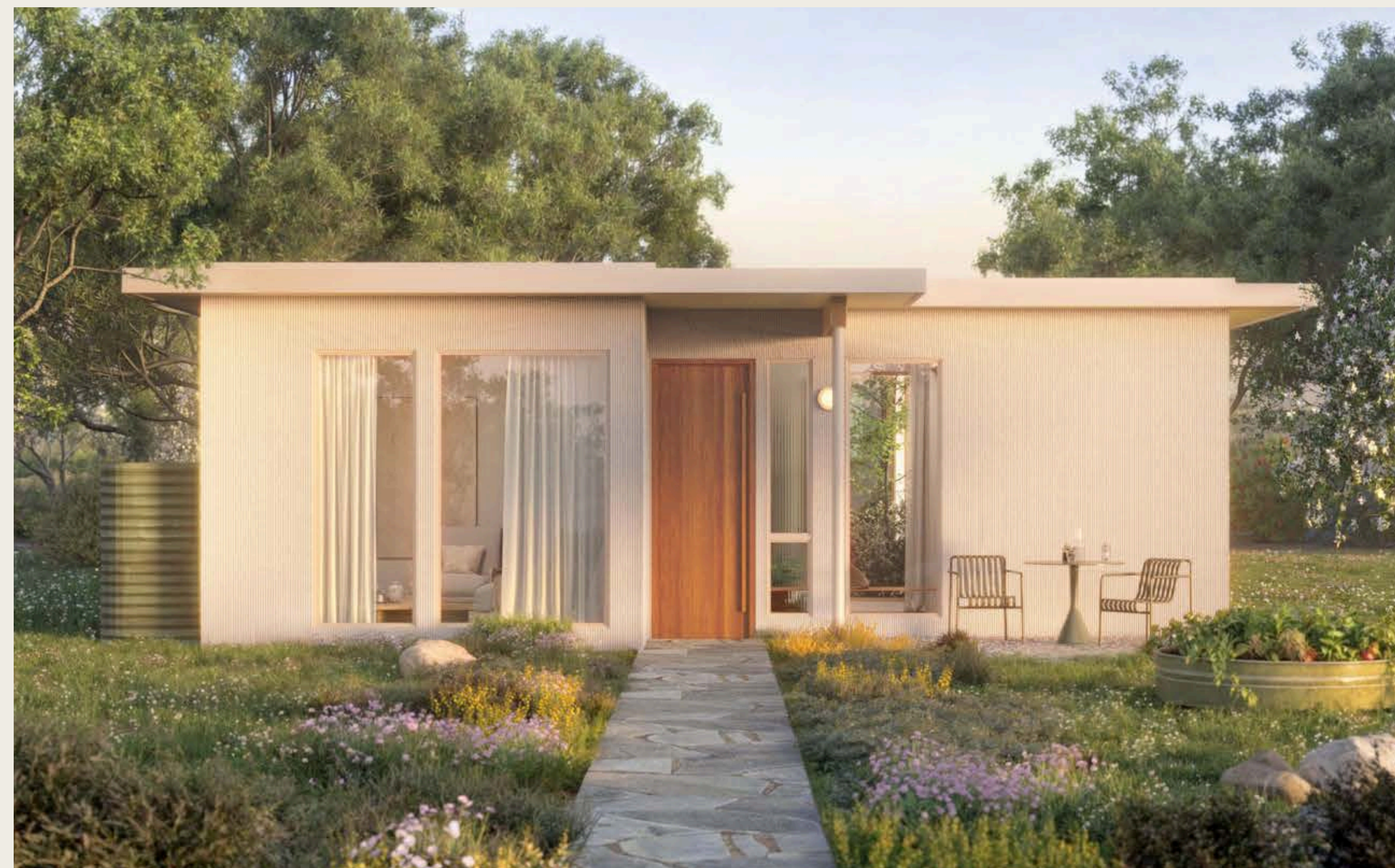


HomeNº1



by SuperLA®

W: super.la

E: team@super.la

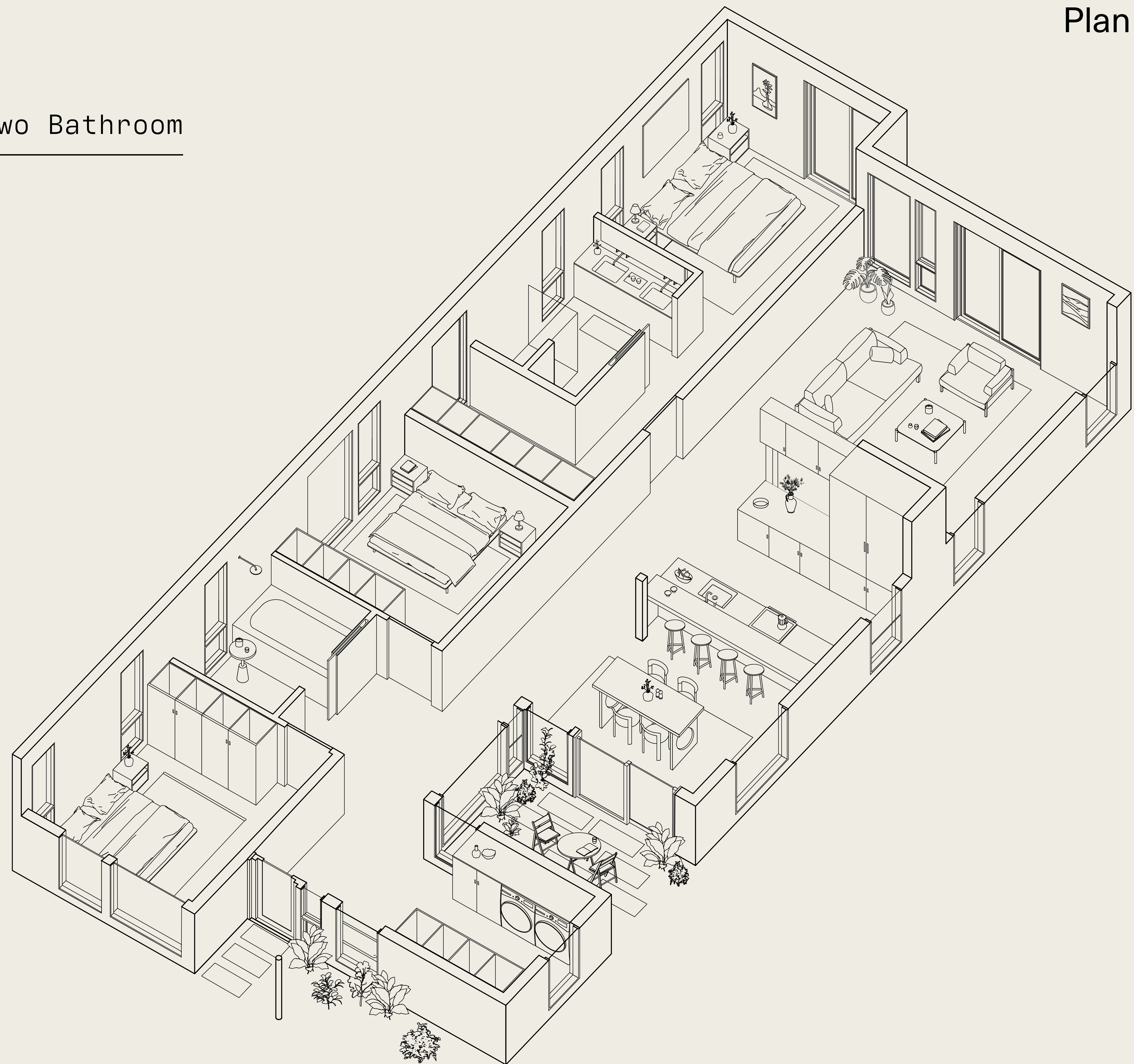
HomeNº1

Plan

Space: Three Bedroom + Two Bathroom

The first in a series of single-family homes by SuperLA® – designed for your well-being and built for Los Angeles, using planet-friendly materials + practices.

HomeNº1 is designed to bring nature directly into your home. With three bedrooms and two bathrooms, the home features natural finishes, large operable windows and doors, as well as an atrium garden at the entry, allowing a ridiculous amount of light and air to enter your space.



by **SuperLA®**

Plan

Primary Bedroom

Primary Bathroom

Walk-In Closet

Bedroom 2

Bathroom 2

Bedroom 3 / Flex

Living Room

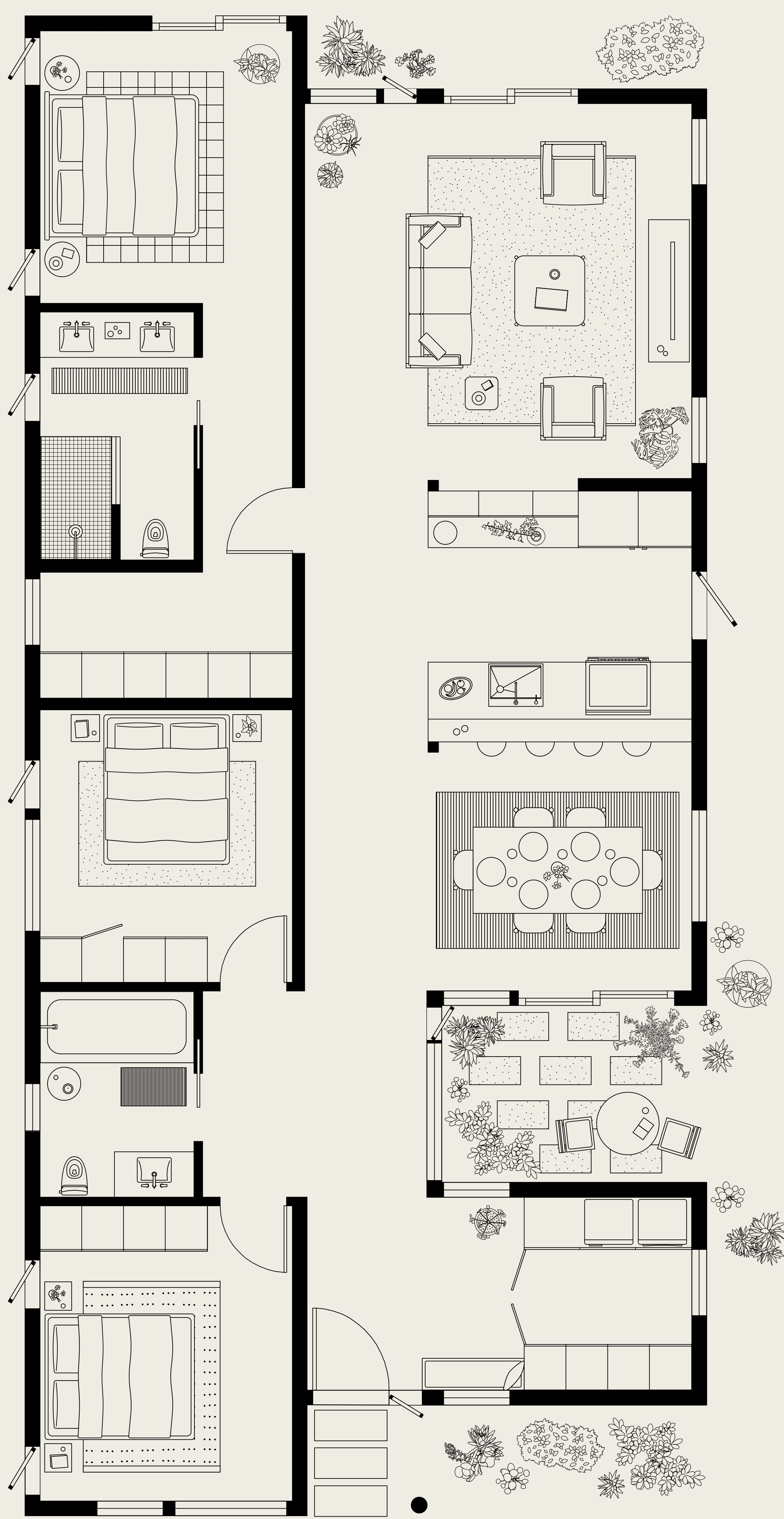
Open Kitchen

Bar-Height Counter

Dining Room

Atrium Garden

Laundry + Storage





HomeNº1

Entry

by **SuperLA®**



Disclaimer:

The interior visuals presented here for HomeN°1 are conceptual in nature and serve as a visual guide to the design and layout. The final finishes, materials, window sizes, and other design elements may vary and are subject to change.

HomeN°1

Dining + Atrium

by **SuperLA®**



Disclaimer:

The interior visuals presented here for HomeN°1 are conceptual in nature and serve as a visual guide to the design and layout. The final finishes, materials, window sizes, and other design elements may vary and are subject to change.

HomeN°1

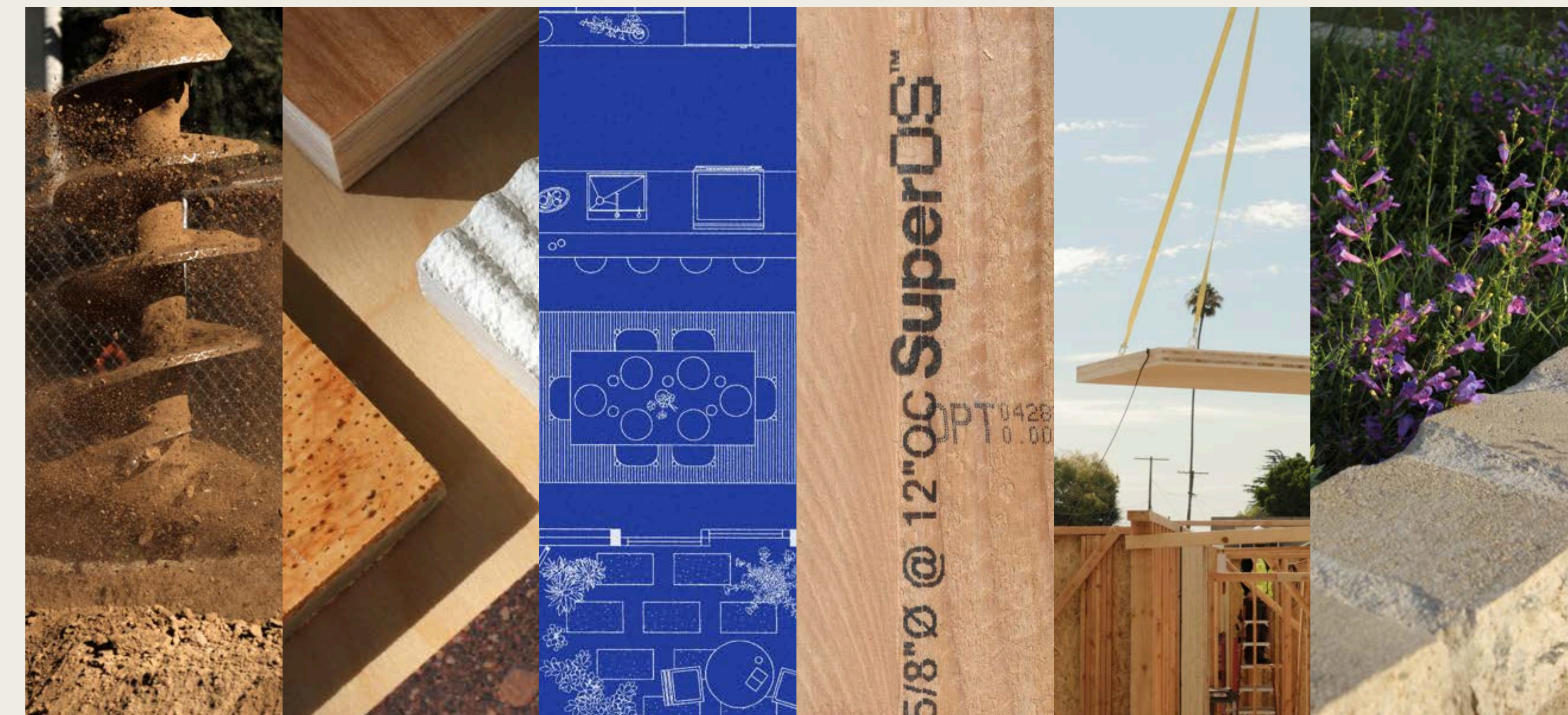
Primary Bedroom

by **SuperLA®**

HomeNº1

From design to delivery. A process built for you.

by **SuperLA®**



1. 2. 3. 4. 5. 6.

Process

As the architect, designer, and builder, SuperLA® serves as your single point of contact, managing every aspect of your rebuild from start to finish. Our streamlined process simplifies design and permitting with thoughtfully pre-designed homes, while our panelized building system ensures a faster construction timeline.

You pick which SuperLA® Home product you would like on your property, we take care of the rest.

W: super.la

E: team@super.la