

HomeNº1



by SuperLA®

W: [super.la](https://super.la) E: [team@super.la](mailto:team@super.la)



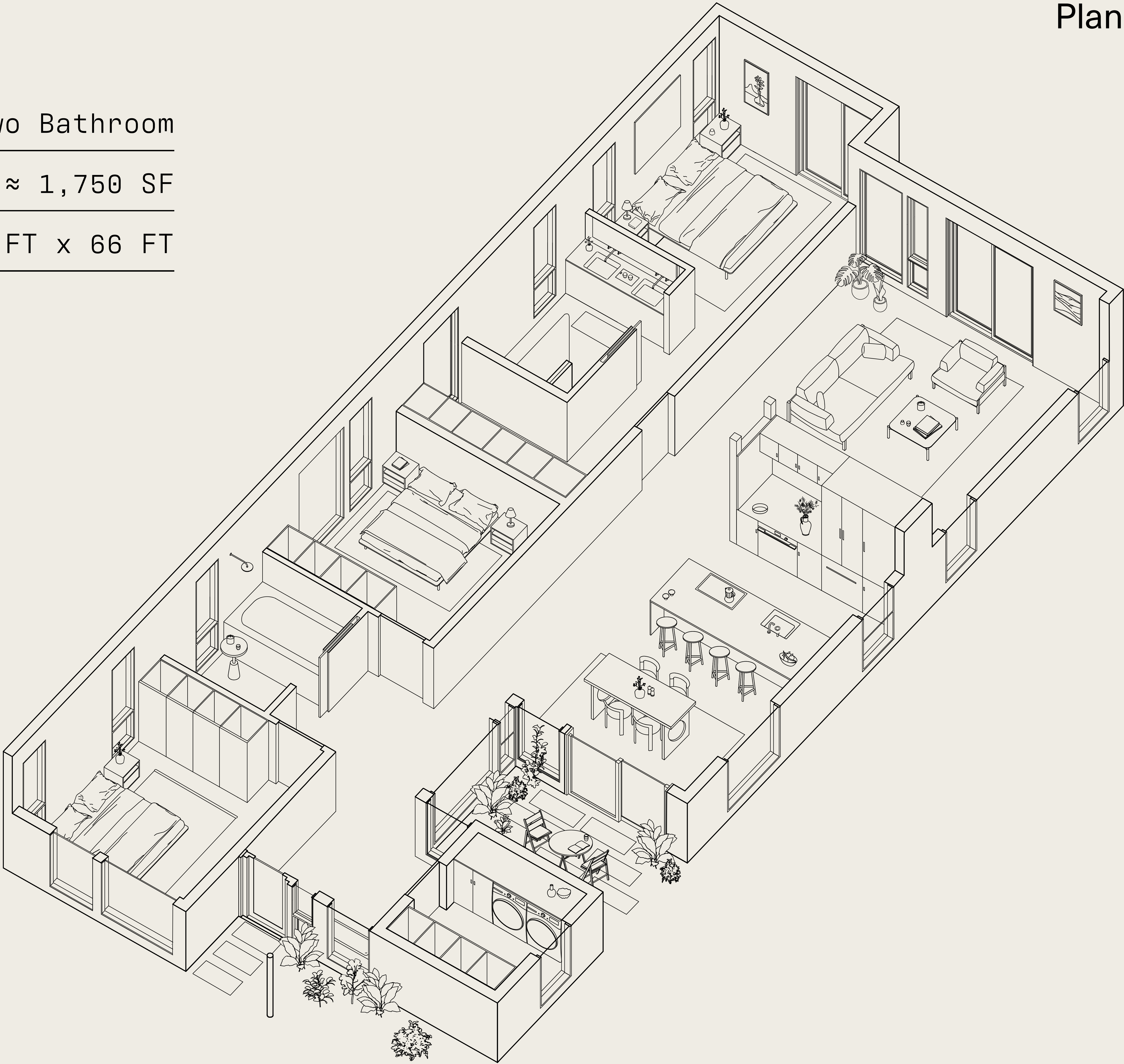
HomeN°1

Plan

Space:	Three Bedroom + Two Bathroom
Home SF:	≈ 1,750 SF
Home Footprint:	≈ 30 FT x 66 FT

The first in a series of single-family homes by SuperLA® – designed for your well-being and built for Los Angeles, using planet-friendly materials + practices.

HomeN°1 is designed to bring nature directly into your home. With three bedrooms and two bathrooms, the home features natural finishes, large operable windows and doors, as well as an atrium garden at the entry, allowing a ridiculous amount of light and air to enter your space.



by **SuperLA®**



HomeNº1

Outdoor Access

Primary Bedroom

Primary Bathroom

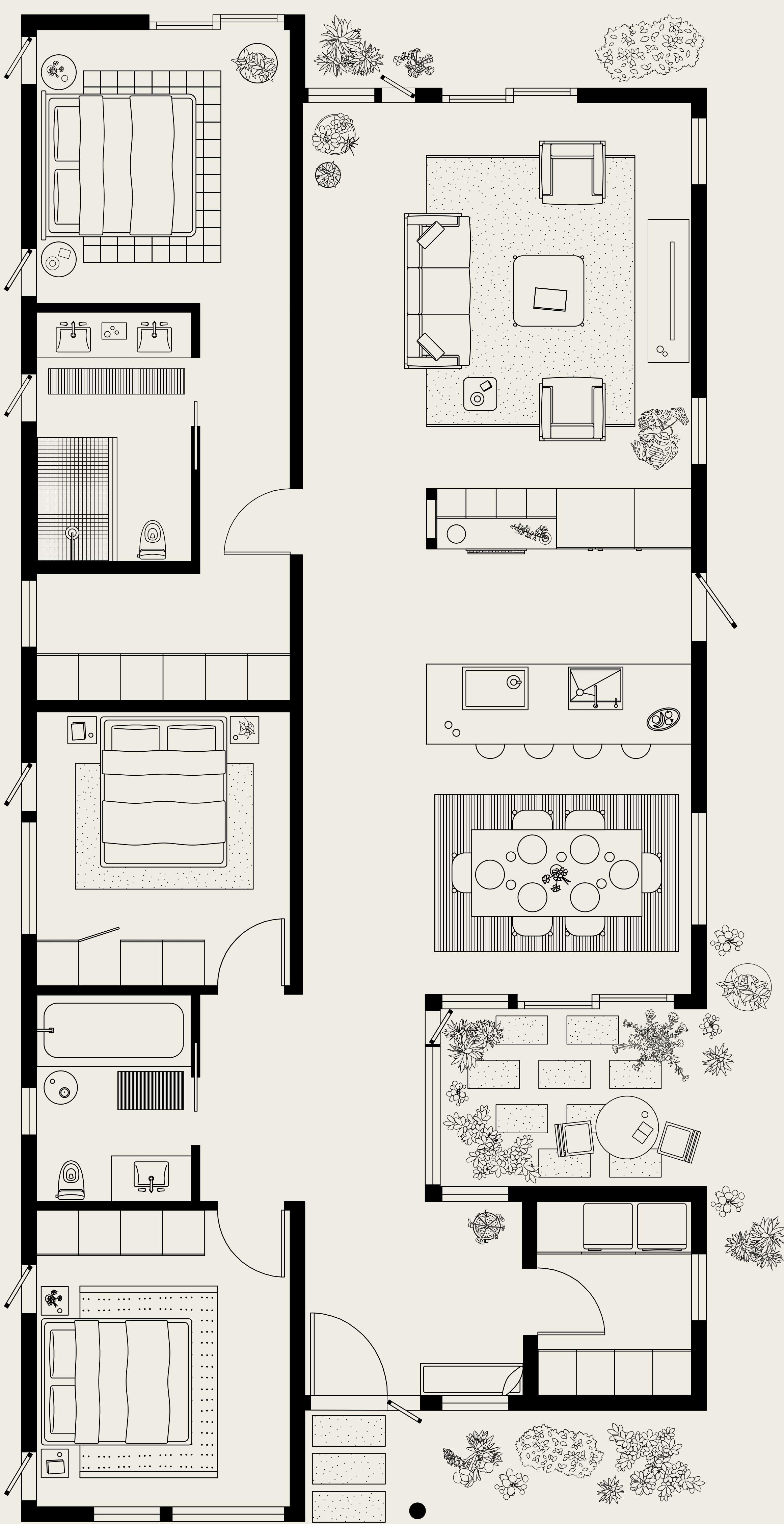
Walk-In Closet

Bedroom 2

Bathroom 2

Bedroom 3 / Flex

by **SuperLA**®



Plan

Outdoor Access

Living Room

Open Kitchen

Breakfast Bar

Dining Room

Atrium Garden

Laundry + Storage





HomeNº1

Entry

by **SuperLA®**





HomeNº1

Dining + Atrium

by **SuperLA®**





HomeNº1

Secondary Bathroom

by **SuperLA®**





Disclaimer: Visuals for HomeN° are conceptual and intended as a design guide. Final finishes, materials, layout, and other elements may vary from what is shown in this presentation.

HomeN°1

Primary Bedroom

by **SuperLA®**



# HomeNº1

## From design to delivery. A process built for you.

by **SuperLA®**



1. 2. 3. 4. 5. 6.

### Process

As the architect, designer, and builder, SuperLA® serves as your single point of contact, managing every aspect of your rebuild from start to finish. Our streamlined process simplifies design and permitting with thoughtfully pre-designed homes, while our panelized building system ensures a faster construction timeline.

You pick which SuperLA® Home product you would like on your property, we take care of the rest.

W: [super.la](https://super.la)

E: [team@super.la](mailto:team@super.la)