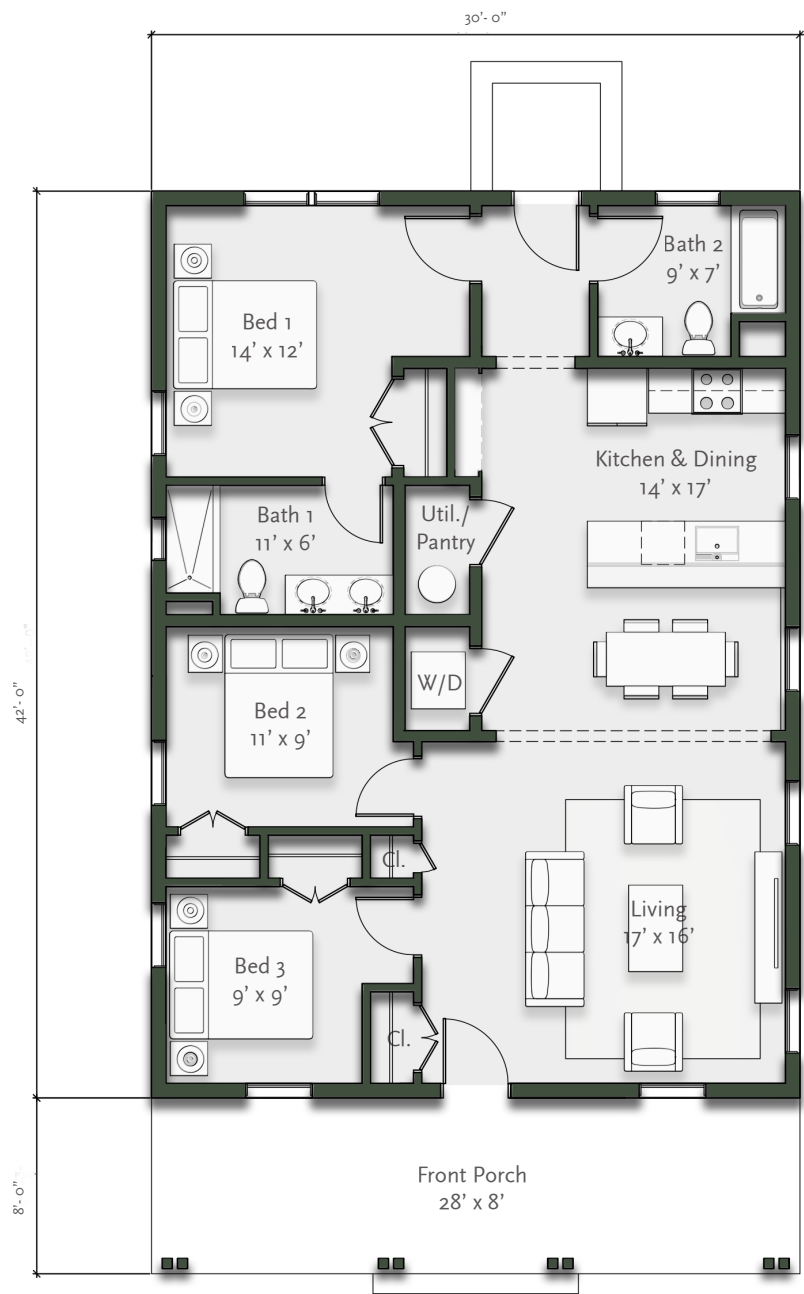


# THE PALM



GROUND FLOOR PLAN

## THE FOOTHILL CATALOG FOUNDATION



Mid-Century Ranch homes boomed in the Foothill region following World War II, and the Palm represents that iconic minimalist traditional aesthetic. The Palm is simple and efficient, as is the modern way, with 3 bedrooms and 2 full bathrooms totaling 1,160 square feet, an ideal space for a variety of different family sizes and needs. The spacious kitchen blends seamlessly into the open dining and living area, allowing for modern comfortable family living. The open front porch reaches high to provide shelter and shade from while welcoming in a mountain breeze on a warm summer evening. The board and batten finish combined with the slender proportioned porch successfully transports the ranch lifestyle into the Foothills.

***Features of The Palm***

- 1,259 Square Feet
- 3 bedrooms, 2 full bathrooms
- Combined Kitchen & Dining Space
- Ample Living Room
- Utility & Laundry Closets
- Large Open Front Porch
- Detached garage