

# East San Gabriel Valley Historic Context Statement

Zoom (online)  
October 23, 2024

# Welcome!

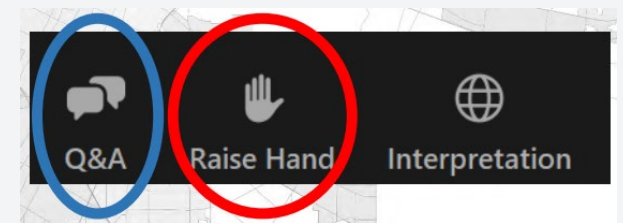
# Meeting Format Overview

## Presentation

- Participants will be muted unless speaking
- Meeting will be recorded

## Comments and Feedback

- Raise your virtual hand to speak
  - Raise hand function is located at the bottom of your screen
- Use Q&A tool to submit questions
  - Click Q&A icon located at the bottom of your screen
    - Type your message in the new chat box



# Interpretation Services

## *English*

Dear participants,  
We are pleased to inform you that simultaneous interpretation is available for this meeting. Please click on the globe-shaped icon and select your preferred language. Thank you.

## *Spanish*

Estimados participantes,  
Nos complace informarles que hay interpretación simultánea disponible para esta reunión. Por favor, hagan clic en el ícono con forma de globo y seleccionen su idioma preferido. Gracias.

## *Mandarin*

各位與會者，  
歡迎參加本次會議，大會提供同聲傳譯服務。請點擊屏幕上的地球圖標，選擇您所偏好的語言。謝謝。

## *Cantonese*

各位粵語廣東話的與會者，我們很高興地通知您，本次會議提供粵語廣東話同聲傳譯服務。請點擊地球形圖標，並選擇您希望使用的語言。多謝！

# Agenda

- Introductions
- What constitutes the ESGV? + ESGV Area Plan
- What is an HCS?
- Eligibility for Historic Designation
- Activity
- Examples of Historical Resources
- Activity
- Timeline and Process
- Community Input
- Q and A

# Introductions

- LA County Planning
- Sapphos Environmental

# What is the East San Gabriel Valley Area Plan (ESGVAP)?

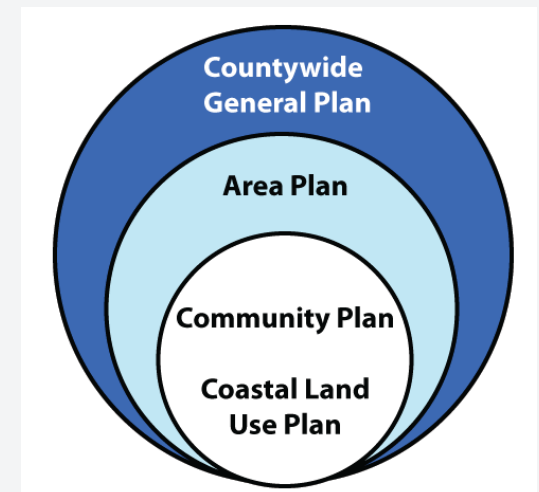
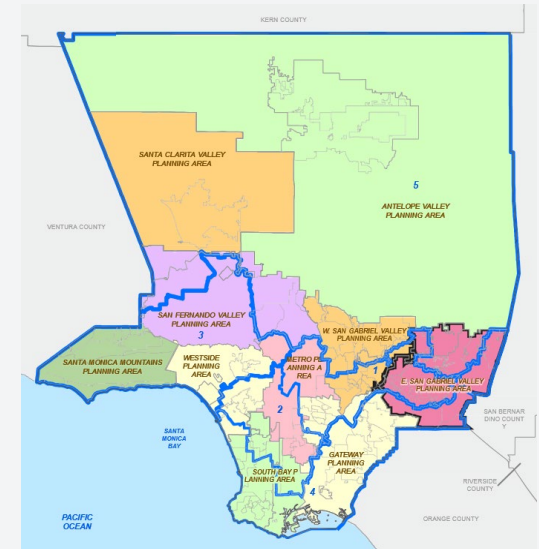
## LA County General Plan

- Lays out values and vision countywide for healthy, livable, and sustainable communities.
- Established the Planning Areas Framework.

## East San Gabriel Valley Area Plan

### *Adopted by the Board of Supervisors in 2024*

- Builds on General Plan goals, priorities, and programs at a local scale for housing, jobs, and services.

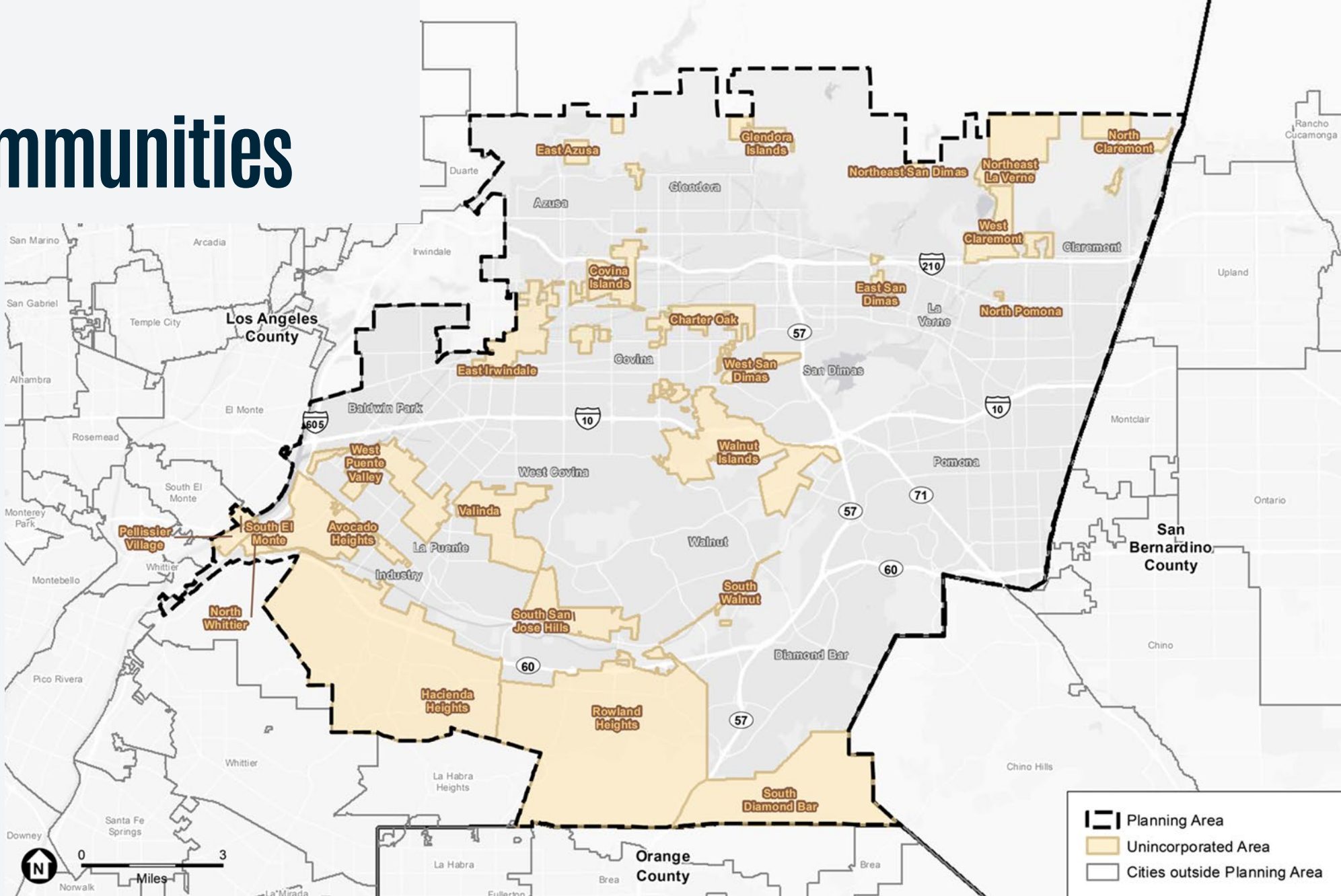


# What is an Area Plan?

- Land Use Planning Policy Document
- Lays out a vision for the future
- Guides growth and development
- Consists of areawide elements and community specific topics and implementation actions (e.g., HCS)
- Maps land use intentions (Land Use Policy)
- Reference document for community stakeholders, e.g., regulators, planners, developers, property owners, businesses, interest groups



# ESGVAP Communities



# 24 Unincorporated Communities within the Planning Area

Avocado Heights  
Charter Oak  
Covina Islands  
East Azusa  
East Irwindale  
East San Dimas  
Glendora Islands  
Hacienda Heights

North Claremont  
North Pomona  
Northeast La Verne  
Northeast San Dimas  
Rowland Heights  
South Diamond Bar  
South San Jose Hills  
South Walnut

Valinda  
Walnut Islands  
West Claremont  
West Puente Valley  
West San Dimas  
Pellissier Village  
Unincorporated South El Monte  
Unincorporated North Whittier

The Planning Area is located in the easternmost portion of the County, and totals approximately 32,826 acres (or 51.29 square miles).

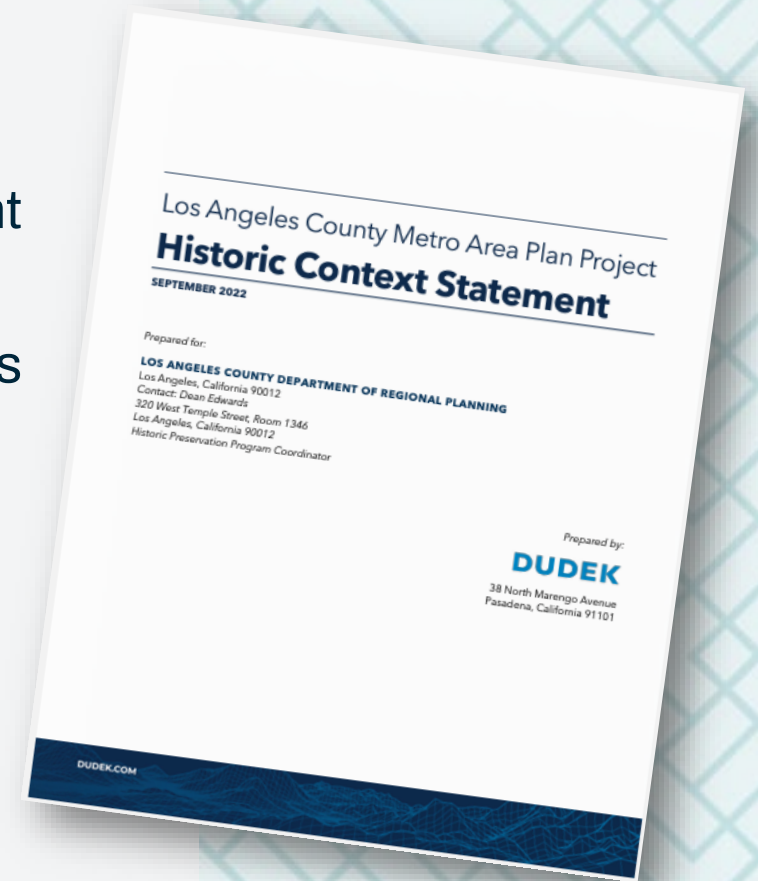
# Historic Context Statement

# What is a Historic Context Statement (HCS)?

- Is a planning document that outlines the historical background and significance of a specific community
- Is *not* a definitive or comprehensive community history, but does identify important themes relevant to the history and development of the built environment
- Provides an analytical framework for evaluating historic resources
- Establishes periods of significance for these themes and their associated property types

*Example: Theme: Chicano Civil Rights Movement (1960-1979)*

*Property Types: public art pieces, residences, routes*



# HCS Purpose

- Ultimately, to honor and preserve the history of the East SGV
- Provides the background information (the first step) **for future historic resources surveys**, which **identify specific resources for protection**
- Provides the foundation for future research
- Develop a study list of potential historic resources

# East San Gabriel Valley Area Plan Historic Preservation Policies

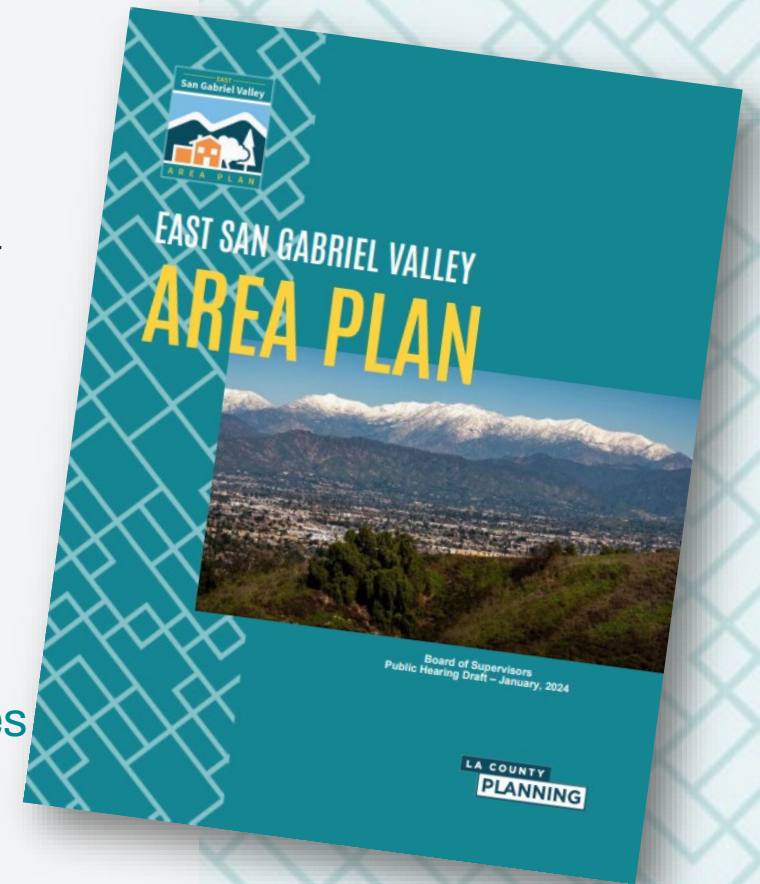
Vision Statement IV – Shared Community Identity and Character

## 4.1 Placemaking and Beautification Strategy

In consultation with stakeholders and residents, design and implement a Placemaking and Beautification Plan that adds or improves infrastructure...

...Specific actions in the Placemaking and Beautification Plan may include:

- Collaborate with local historical groups to create an inventory of historic sites and structures in ESGV. Identify and secure funding to repair and restore these sites, if desired. Install multilingual markers and educational signage in identified historic sites and in public spaces in ESGV to showcase the history and character of the community.



**What counts as a  
*historic landmark?***

# County Landmark Eligibility

A **structure, site, object, tree, landscape, or natural land feature** may be designated as a County landmark if it is **50** years of age or older and satisfies one or more of the following criteria:

- Association with historic events or activities
- Association with important persons
- Distinctive design or physical characteristics
- Potential to provide important information about prehistory or history
- Determined eligible or is listed in the National or CA Register
- If it is a tree, it is one of the largest or oldest tree species in the County
- If it is a landscape or natural land feature, it is associated with historic events, activities, or people



Photographed by Craig Baker, December 16, 2018  
Acton Community Presbyterian Church



# County Historic District Eligibility

A **geographic area** may be designated as a County historic district if it is **50 years of age or older** and

- Exhibits a concentration of historic or scenic sites containing common character-defining features, which contribute to each other and are unified aesthetically by plan, physical development, or architectural quality; or
- Exhibits significant geographical patterns, associated with different eras of settlement and growth, particular transportation modes, or distinctive examples of parks or community planning.

More than 50 percent of the property owners must consent to designation.



# Activity

# Activity - Then and Now photo game

*The next slide will have a historical photo of a place in the planning area.*

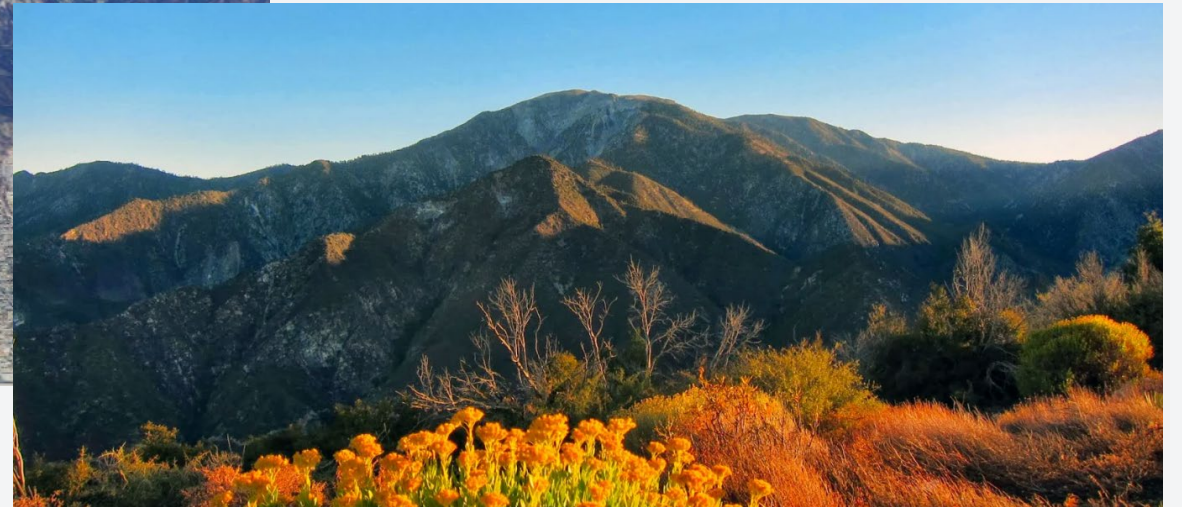
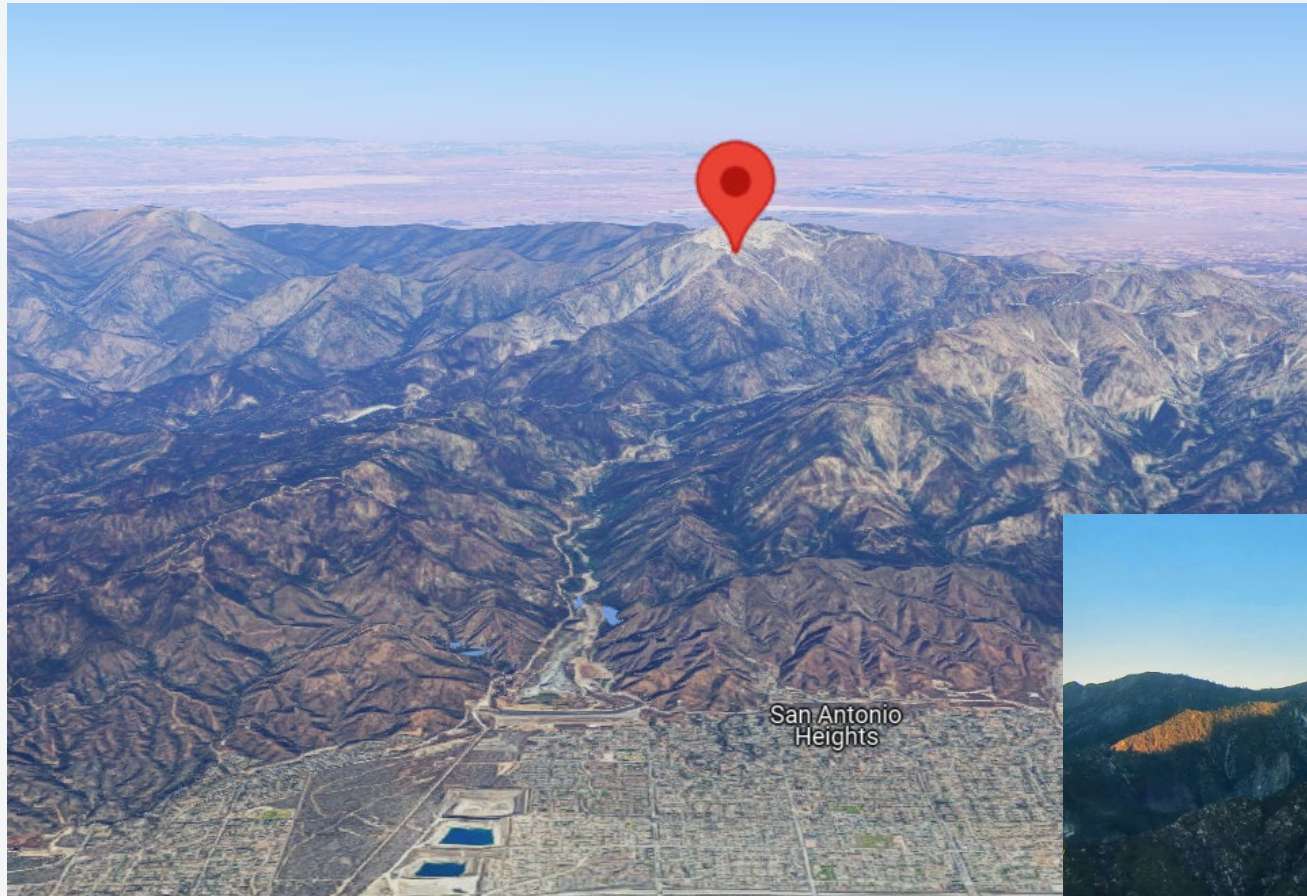
*Guess where it is!*

**where is this?**



# Mt. Baldy (Mt. San Antonio)

## Joatngna (Tongva)



**where is this?**



# Hsi Lai Temple



**where is this?**





# where is this?

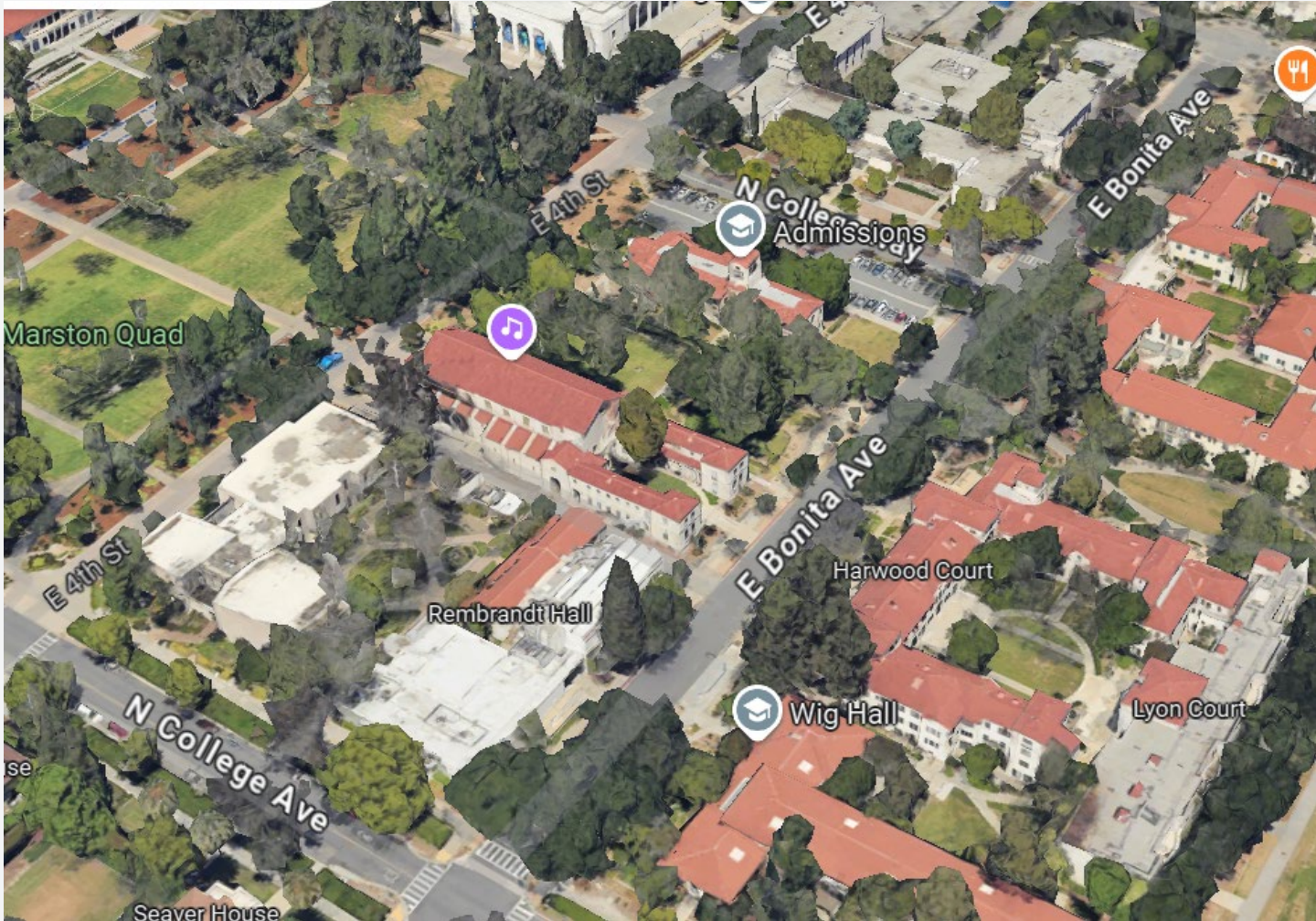




**where is this?**



**where is this?**

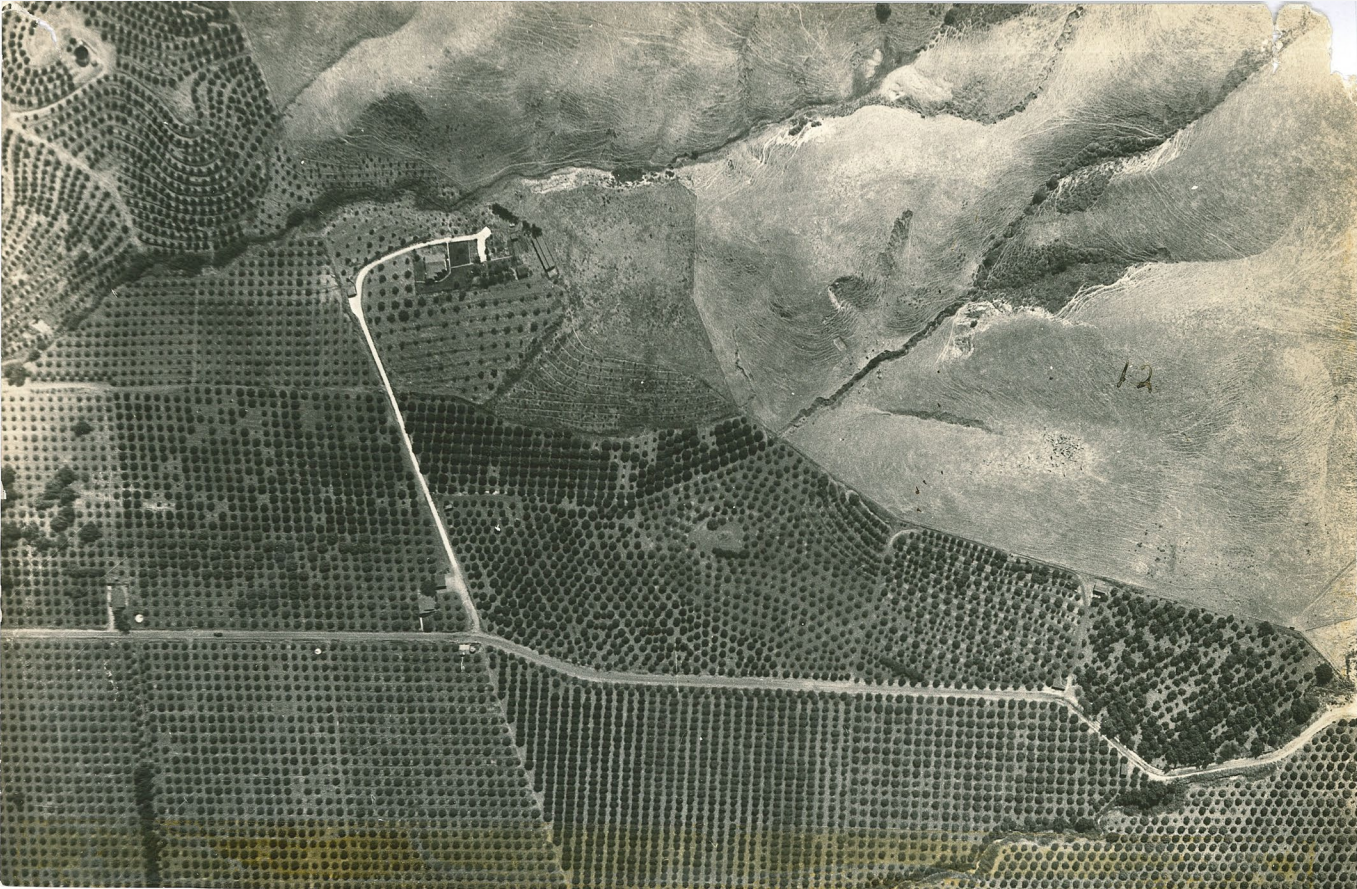


# Pomona College

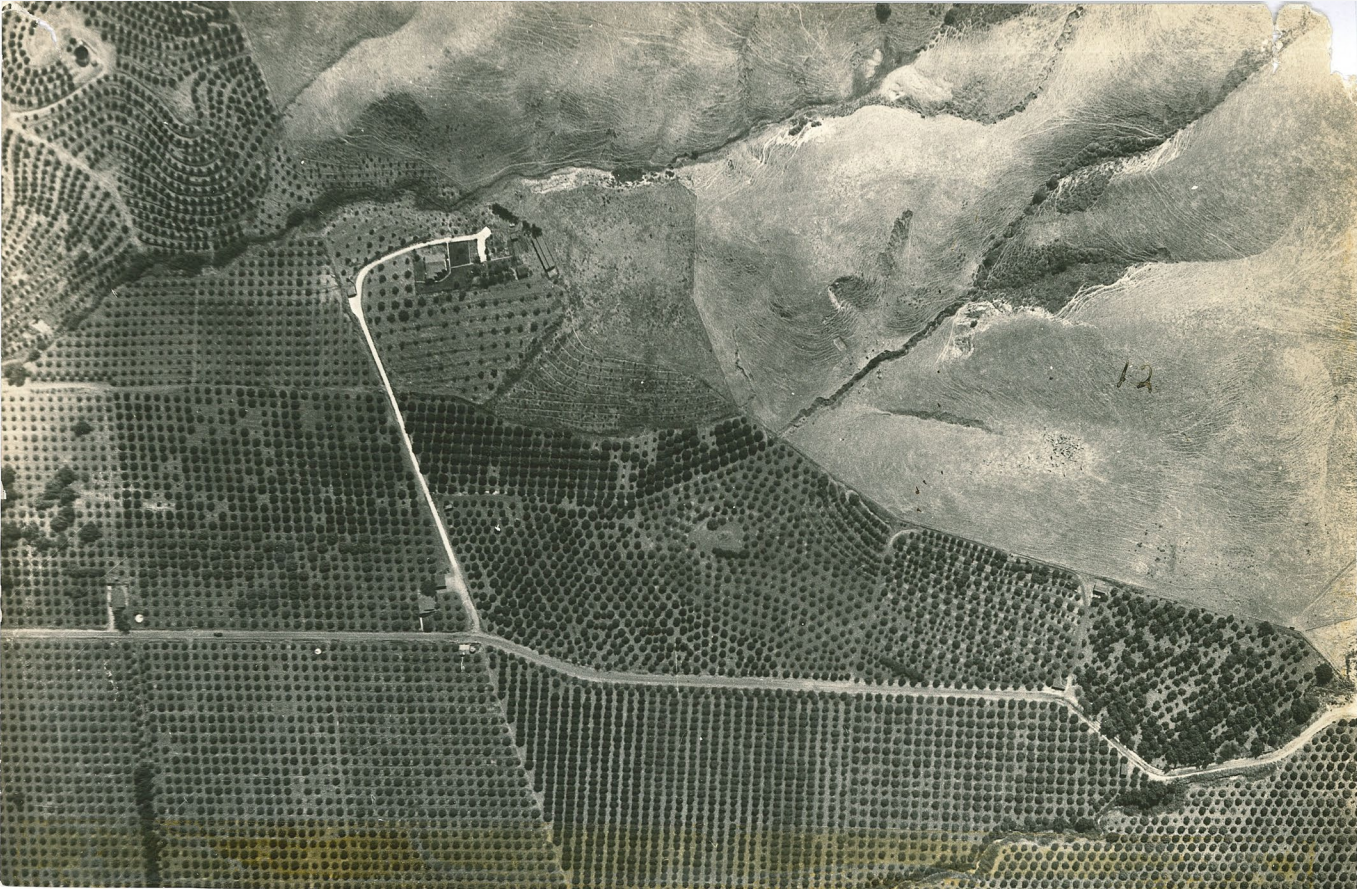




# where is this?



# Hacienda Heights

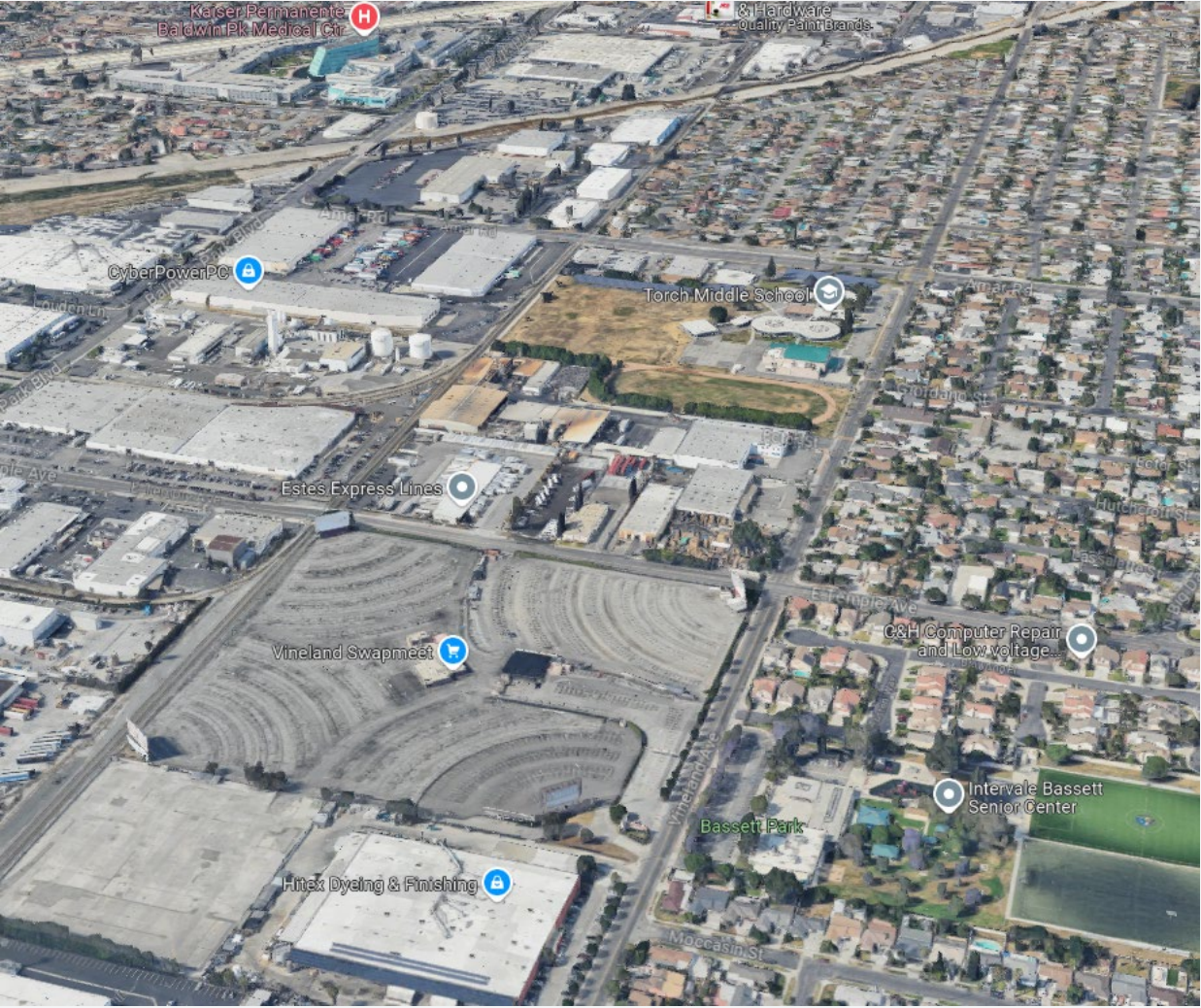




**where is this?**



# Vineland Swap Meet



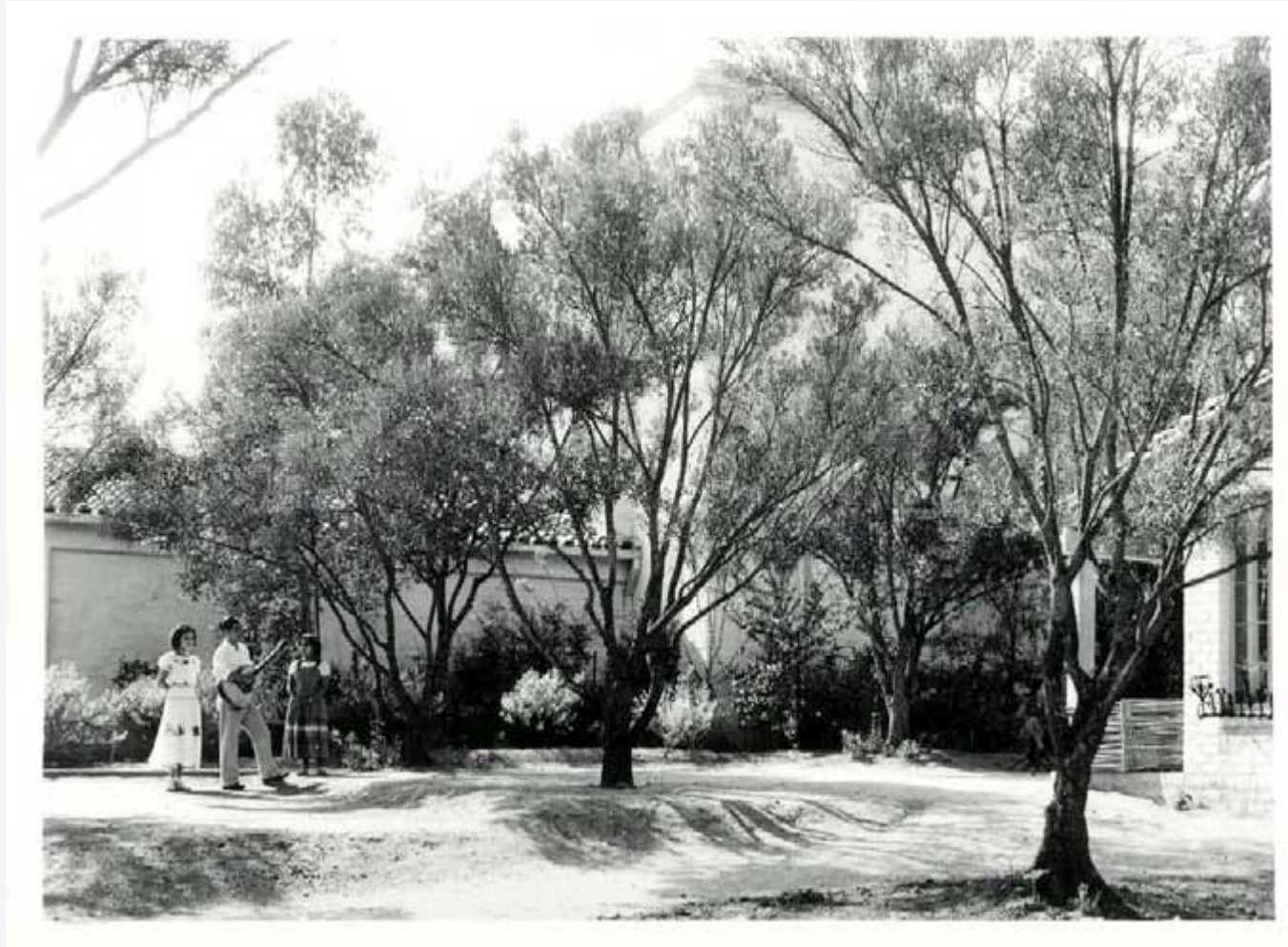
where is this?





# Claremont Metrolink Station (Santa Fe Depot)/ Claremont Lewis Museum of Art

**where is this?**





PADUA HILLS THEATRE  
CLAREMONT, CALIFORNIA



# Padua Hills Theatre



# Agricultural Development





# Commercial Development



# Ethnic-Cultural Development



# Activity

# Activity - Mapping the ESGV's History

*What are some of your favorite places in the East SGV from your childhood or early memories?*

# Activity - Mapping the ESGV's History

*When people visit you from out of town, where in the East SGV do you bring them?*

# Activity - Mapping the ESGV's History

*Help us discover places and bits of history that make your community unique.*

*Name some of these places (historical or cultural landmarks) in the chat.*

*Think commercial development, ethnic and cultural history, equestrian history, architecture, eras like the '50s and the '70s, and Route 66...*

# Activity - Mapping the ESGV's History

*What historical events or individuals have played a significant role in the development of the East San Gabriel Valley?*

# HCS Timeline



# Timeline and Process



- **Now** – desktop review and background research
- **Now** – community meeting to introduce project, receive input
- **November 2024** – reconnaissance survey
- **February 2025** (tentative) – draft HCS available for public review
- **February 2025** (tentative) – community meeting to present draft HCS
- **April 2024** (tentative) – presentation to the Historical Landmarks and Records Commission (HLRC) for feedback; hearing
- **May/June 2025** – finalize HCS

# Community Involvement - we need your insight!

- Note cards, maps, and comment cards!
- If you would like to contribute any information about the following subjects regarding the history of your community, please contact us at [commplan@planning.lacounty.gov](mailto:commplan@planning.lacounty.gov) or use our form at [planning.lacounty.gov/esgvaphcs](https://planning.lacounty.gov/esgvaphcs)
  - Buildings, structures, sites or areas worthy of historic preservation
  - Events or people important to community history
  - Issues important to community history
- **Feedback due November 11, 2024**

# Thank you! Questions?

Website: [planning.lacounty.gov/esgvaphcs](https://planning.lacounty.gov/esgvaphcs)

Email: [commplan@planning.lacounty.gov](mailto:commplan@planning.lacounty.gov)