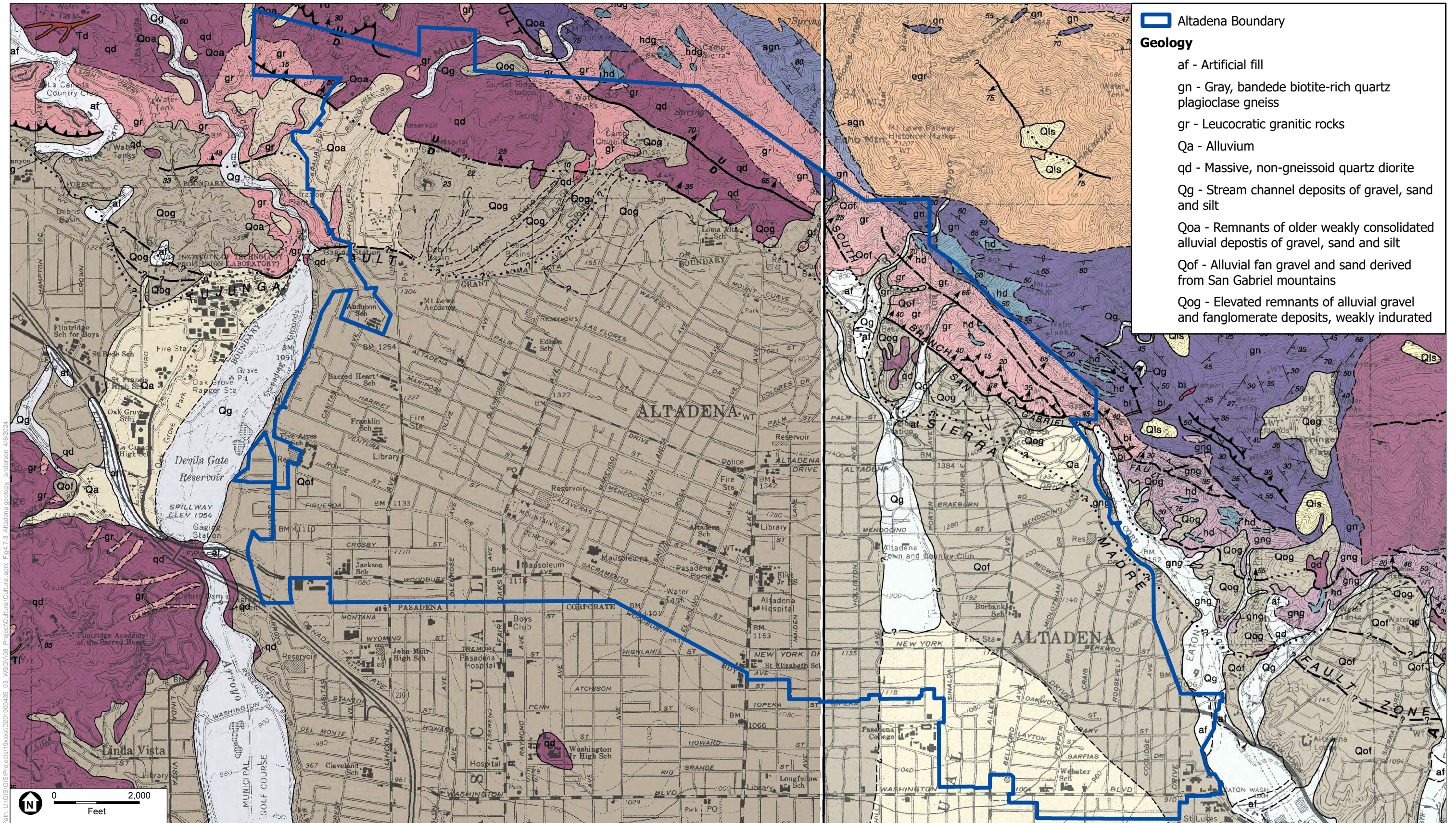


Appendix G
WSGVAP Geologic Maps

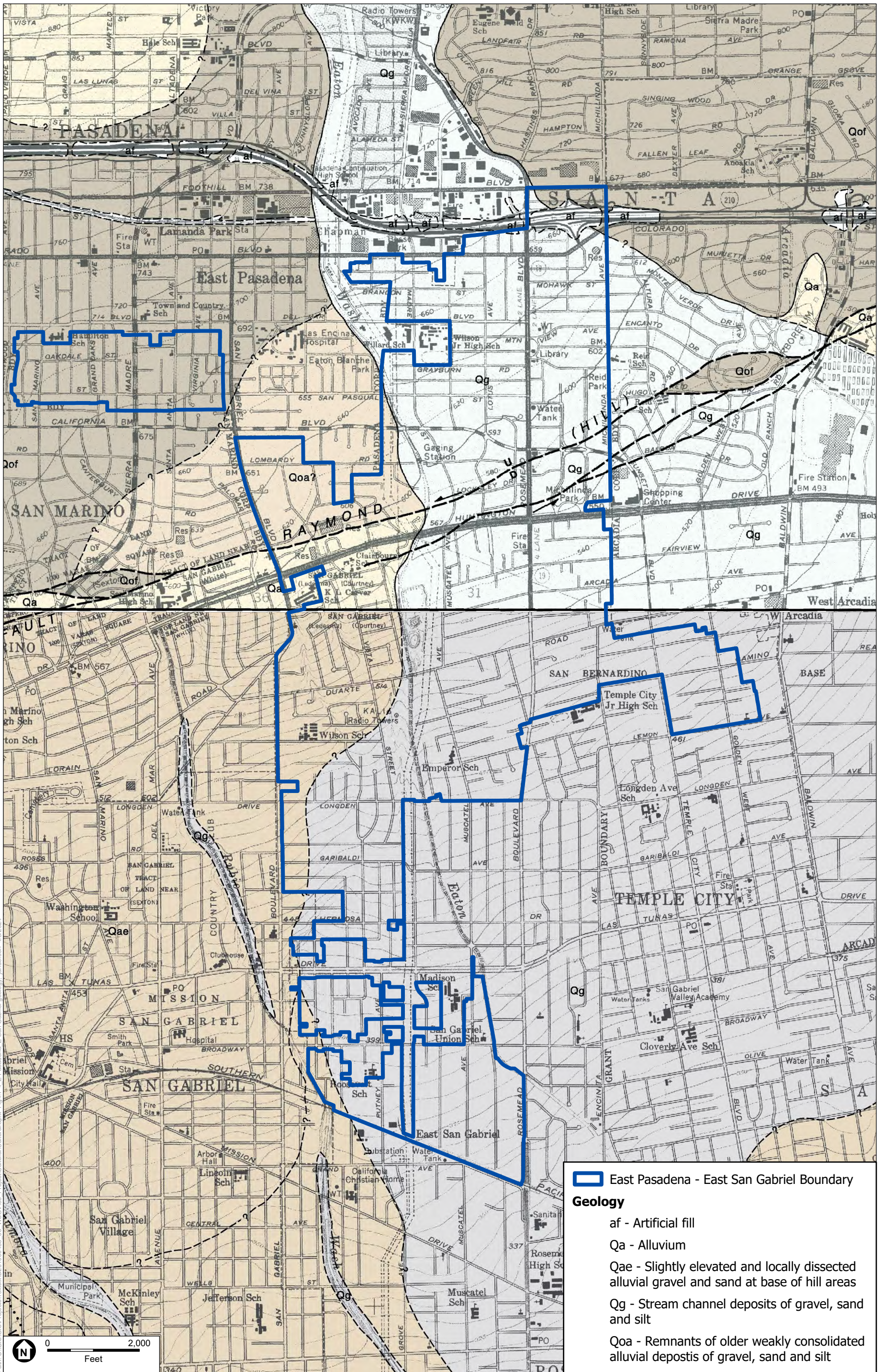


TOPOQUAD: Pasadena and Mount Wilson.

West San Gabriel Valley Area Plan

Geologic Map - Altadena





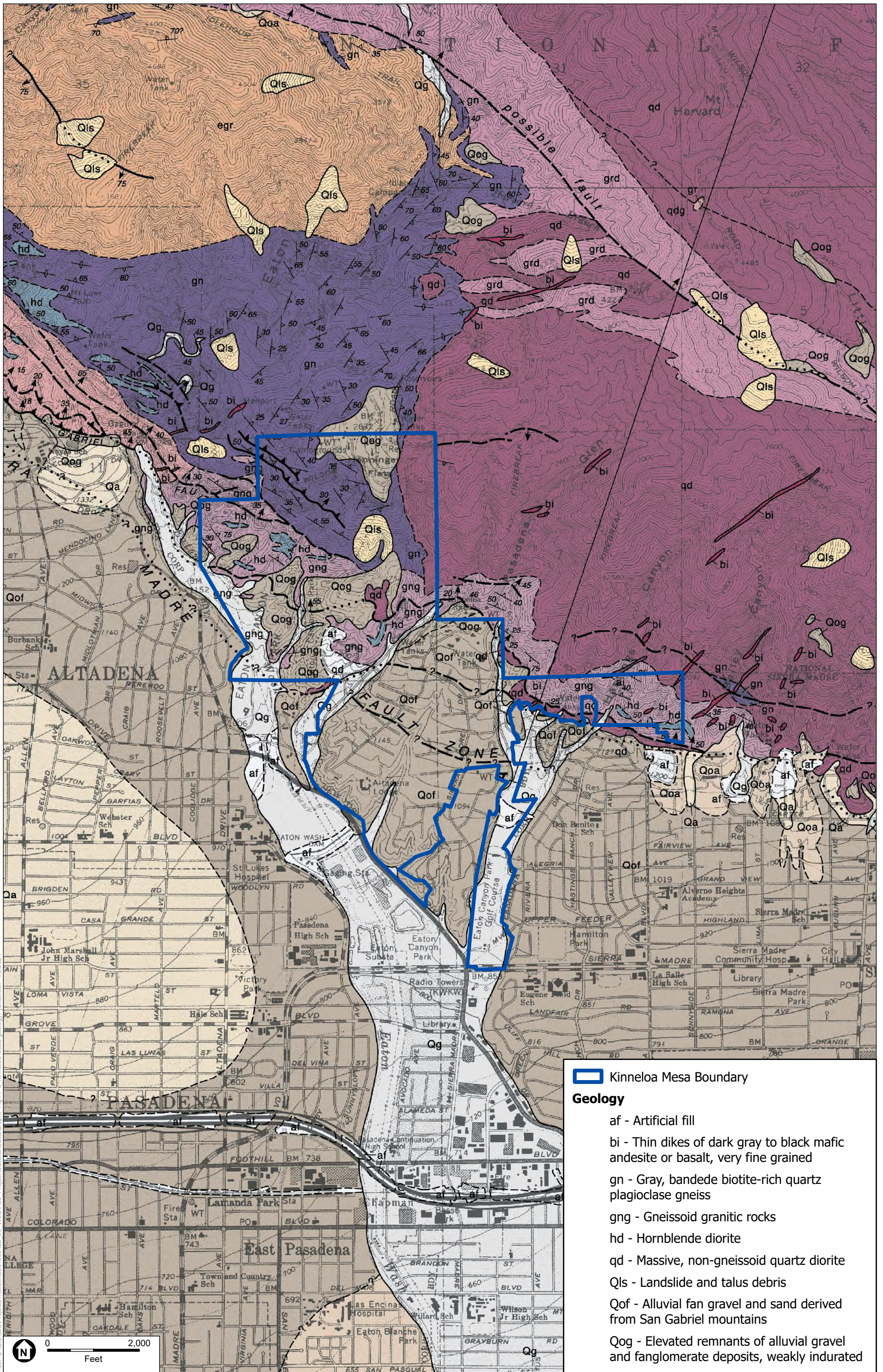
Path: U:\GIS\Projects\10000\000003_03_MSCV\03_Project\Cultural\Cultural.aprx Fig. 4.7.4 E. Pasadena - E. San Gabriel geology_jan2004

TOPOQUAD: Mount Wilson and El Monte

West San Gabriel Valley Area Plan

**Geologic Map
East Pasadena - East San Gabriel**





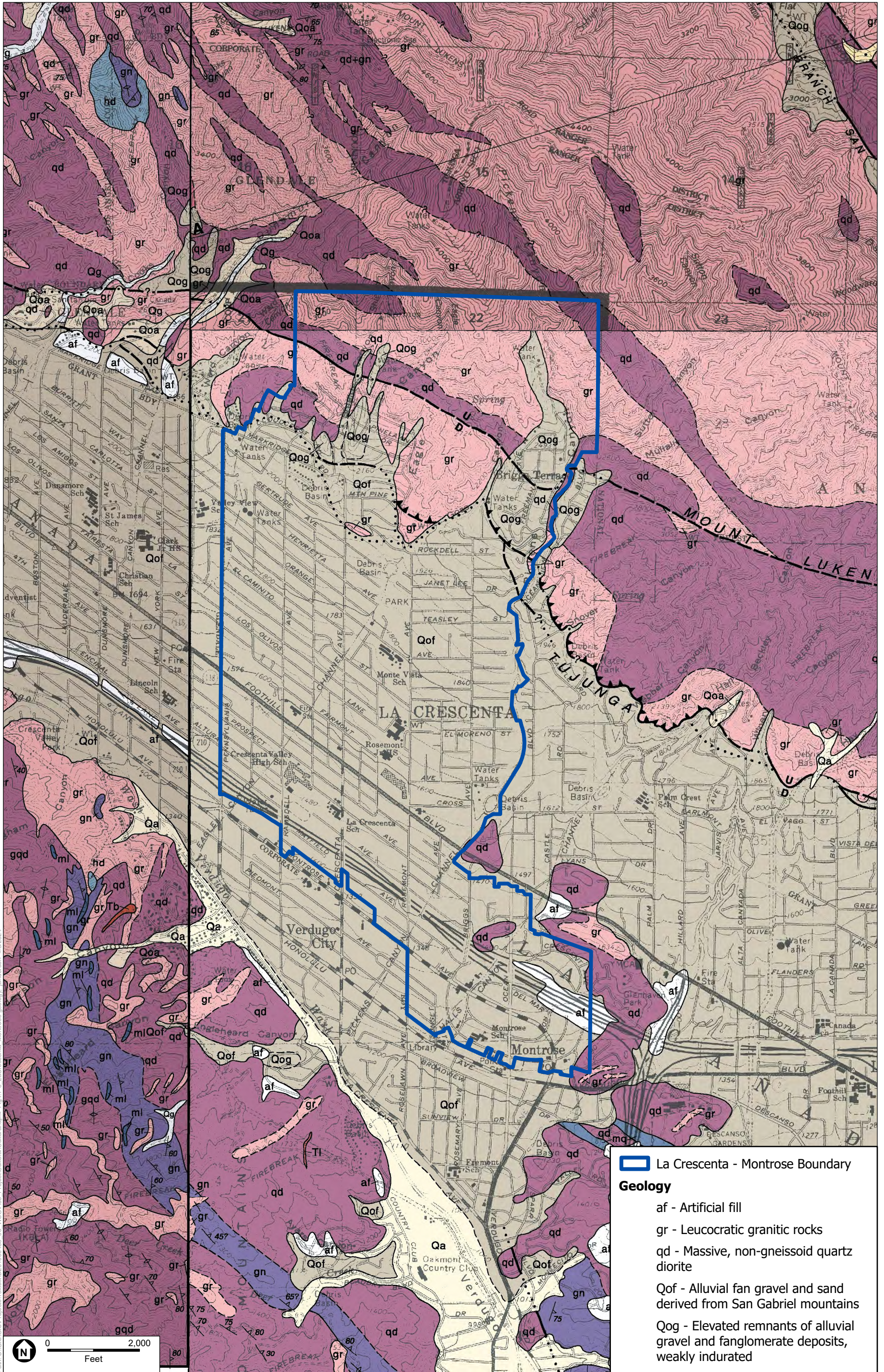
Path: U:\GIS\Projects\10000\10000435_03_MISGV103_Project\Cultural\Cultural.aprx Fig. 4-7-5 Kinneloa Mesa geology - janderson 4/8/2024

TOPOQUAD: Mount Wilson

West San Gabriel Valley Area Plan

Geologic Map - Kinneloa Mesa



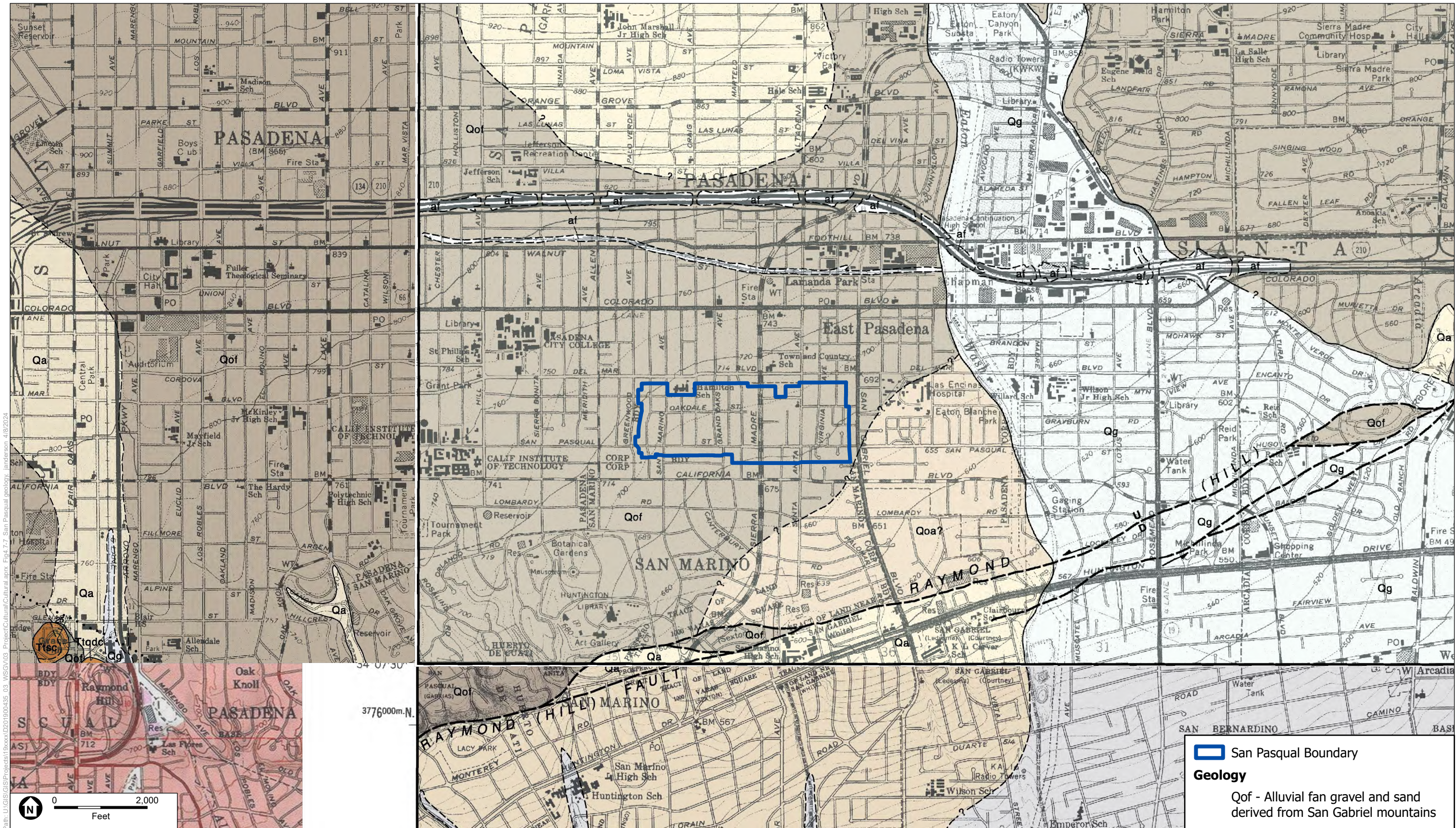


Path: U:\GIS\Projects\0201000003_03_MSCV003_Project\Cultural\Cultural.aprx; Fig: 4-7.6 La Crescenta - Montrose geology; Janderson; 4/8/2024

SOURCE: Condor Peak and Pasadena

West San Gabriel Valley Area Plan





San Pasqual Boundary

Geology

Qof - Alluvial fan gravel and sand derived from San Gabriel mountains

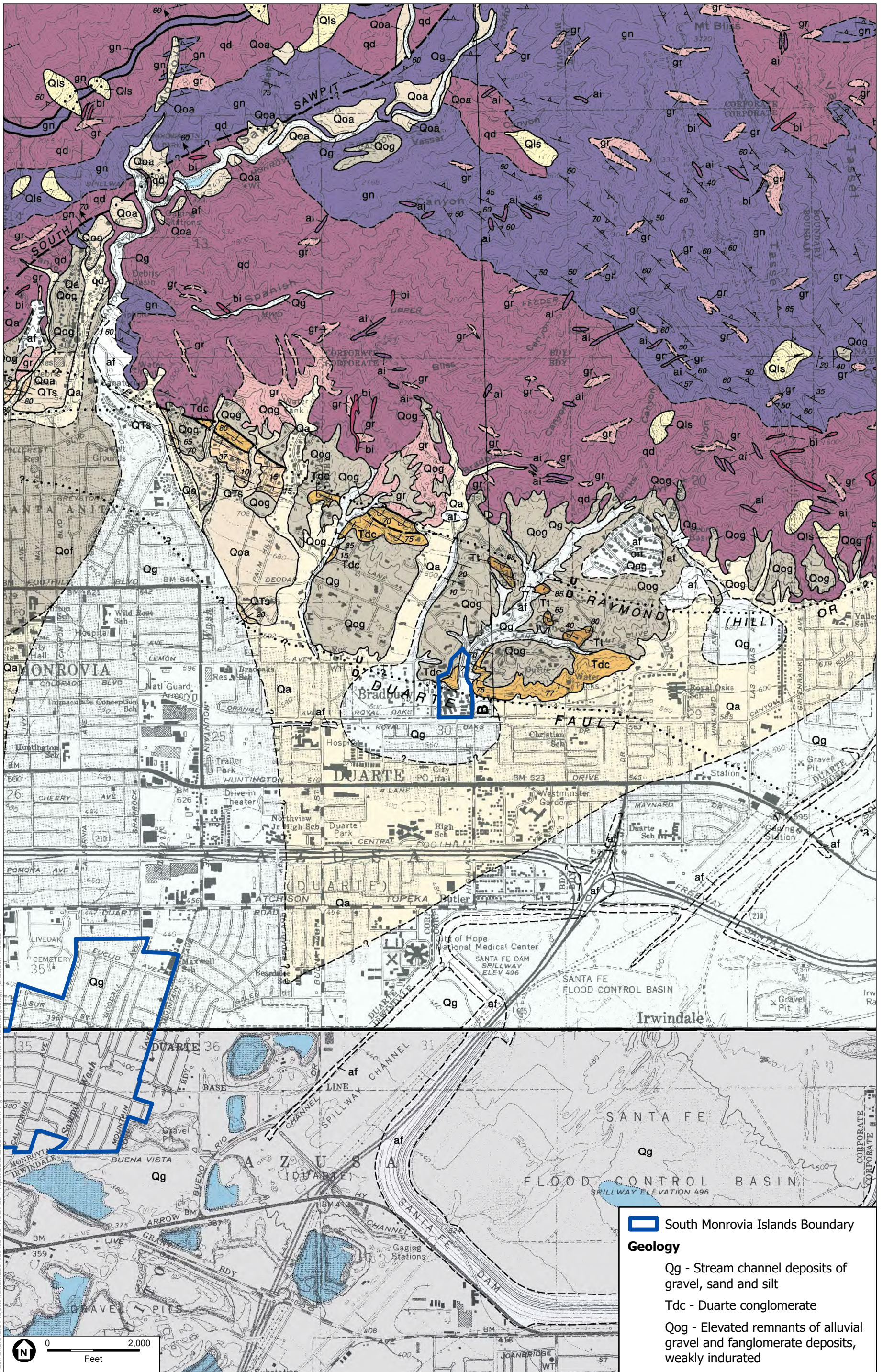
Qg

TOPOQUAD: Mount Wilson

West San Gabriel Valley Area Plan

Geologic Map - San Pasqual



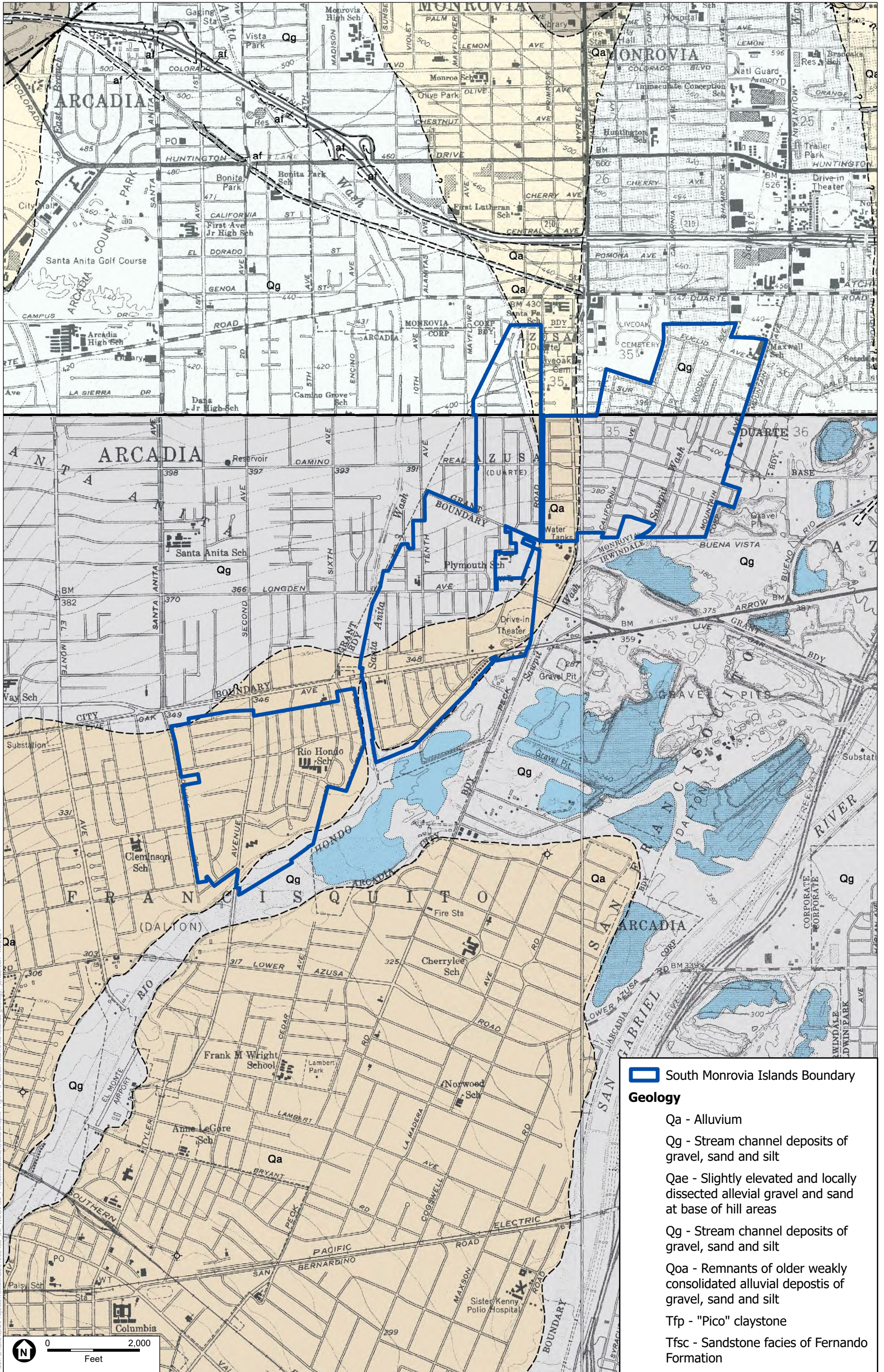


TOPOQUAD: Azusa

West San Gabriel Valley Area Plan

**Geologic Map
South Monrovia Islands**





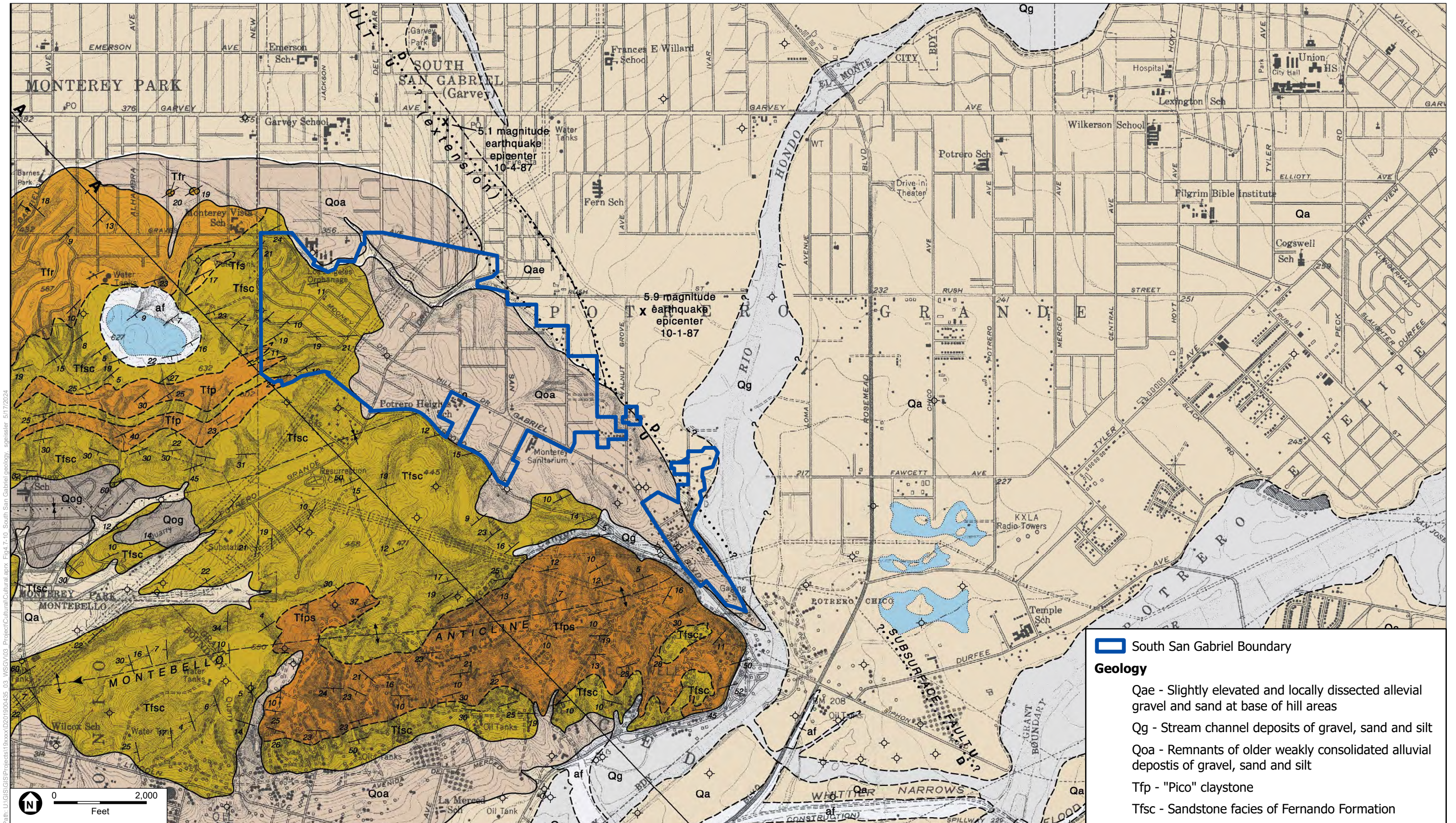
Path: U:\GIS\Projects\Iscor\20100403_03_MISGV03_Project\Cultural\Cultural.aprx Fig4-7-9_South Monrovia Islands geology_1.mxd 4/8/2024

TOPOQUAD: Azusa

West San Gabriel Valley Area Plan

**Geologic Map
South Monrovia Islands**





South San Gabriel Boundary

Geology

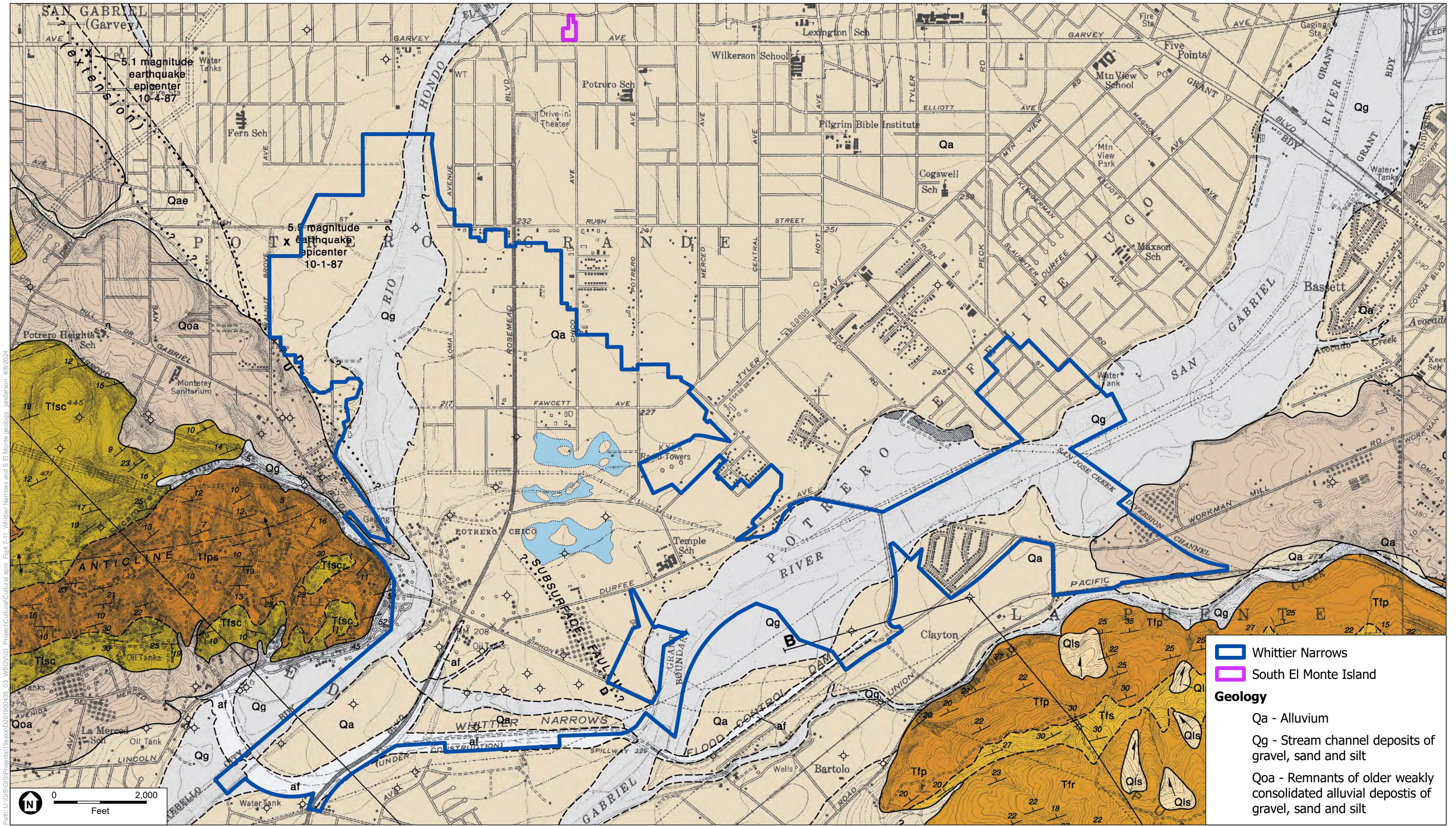
- Qae - Slightly elevated and locally dissected alluvial gravel and sand at base of hill areas
- Qg - Stream channel deposits of gravel, sand and silt
- Qoa - Remnants of older weakly consolidated alluvial deposits of gravel, sand and silt
- Tfp - "Pico" claystone
- Tfsc - Sandstone facies of Fernando Formation

TOPOQUAD:EI Monte

West San Gabriel Valley Area Plan

Figure 4.7-10
Geology
South San Gabriel





▭ Whittier Narrows
▭ South El Monte Island

Geology

- Qa - Alluvium
- Qg - Stream channel deposits of gravel, sand and silt
- Qoa - Remnants of older weakly consolidated alluvial deposits of gravel, sand and silt

TOPOQUAD: El Monte

West San Gabriel Valley Area Plan



**Geologic Map
Whittier Narrows and South El Monte Island**

