






East San Dimas - Northeast San Dimas

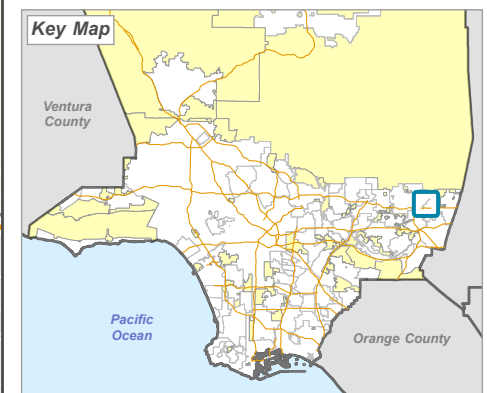
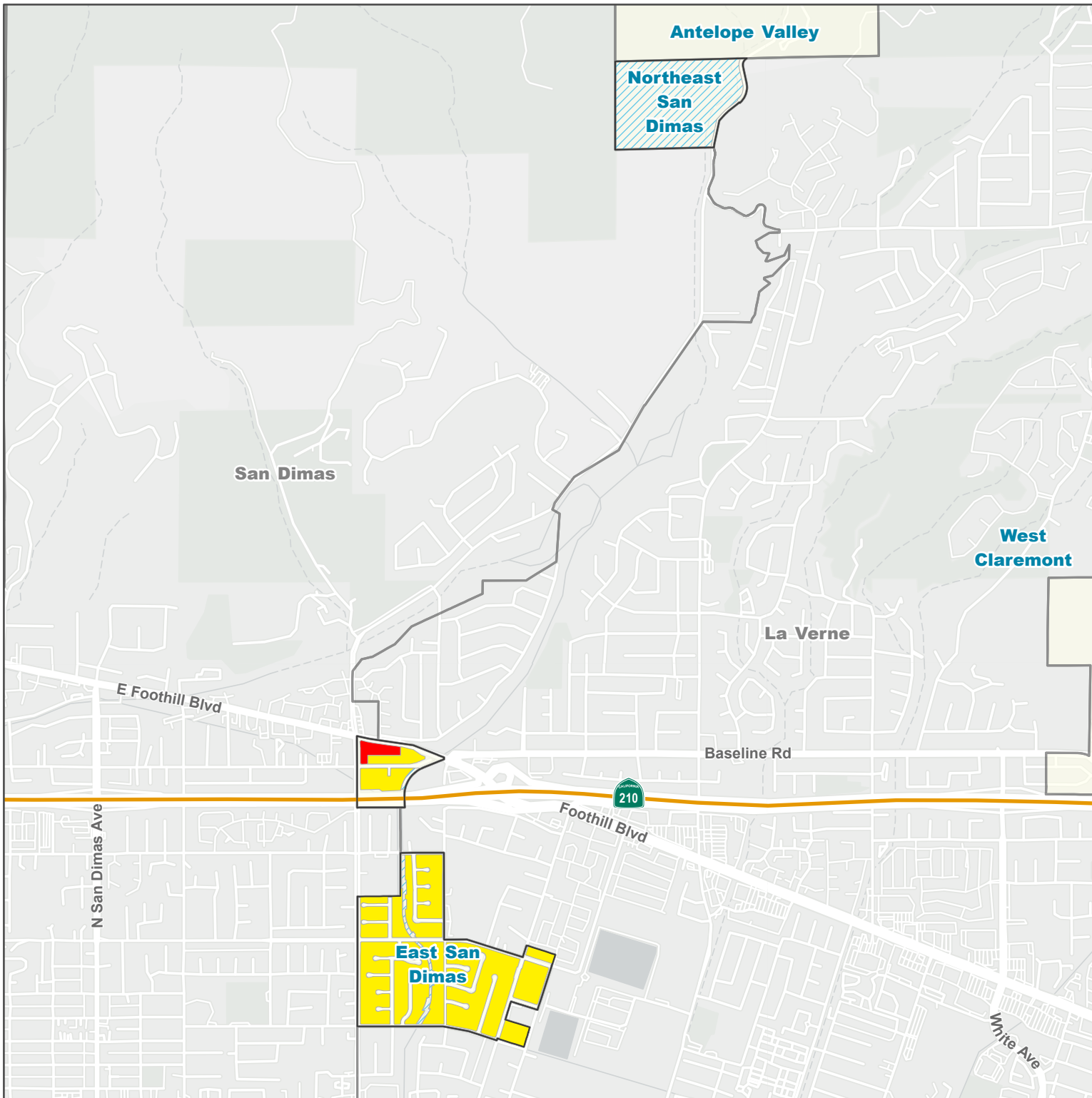
Land Use Policy

Land Use Policy - General Plan 2035

-  H9 - Residential 9
-  CG - General Commercial
-  W - Water

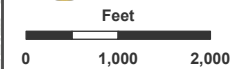
Base Layers

-  Other Unincorporated Community
-  Incorporated City



LA COUNTY
PLANNING

LOS ANGELES COUNTY
Dept. of Regional Planning
320 W. Temple St.
Los Angeles, CA 90012



Prepared by DRP GIS Section / May 2024