

West Chatsworth - Westhills

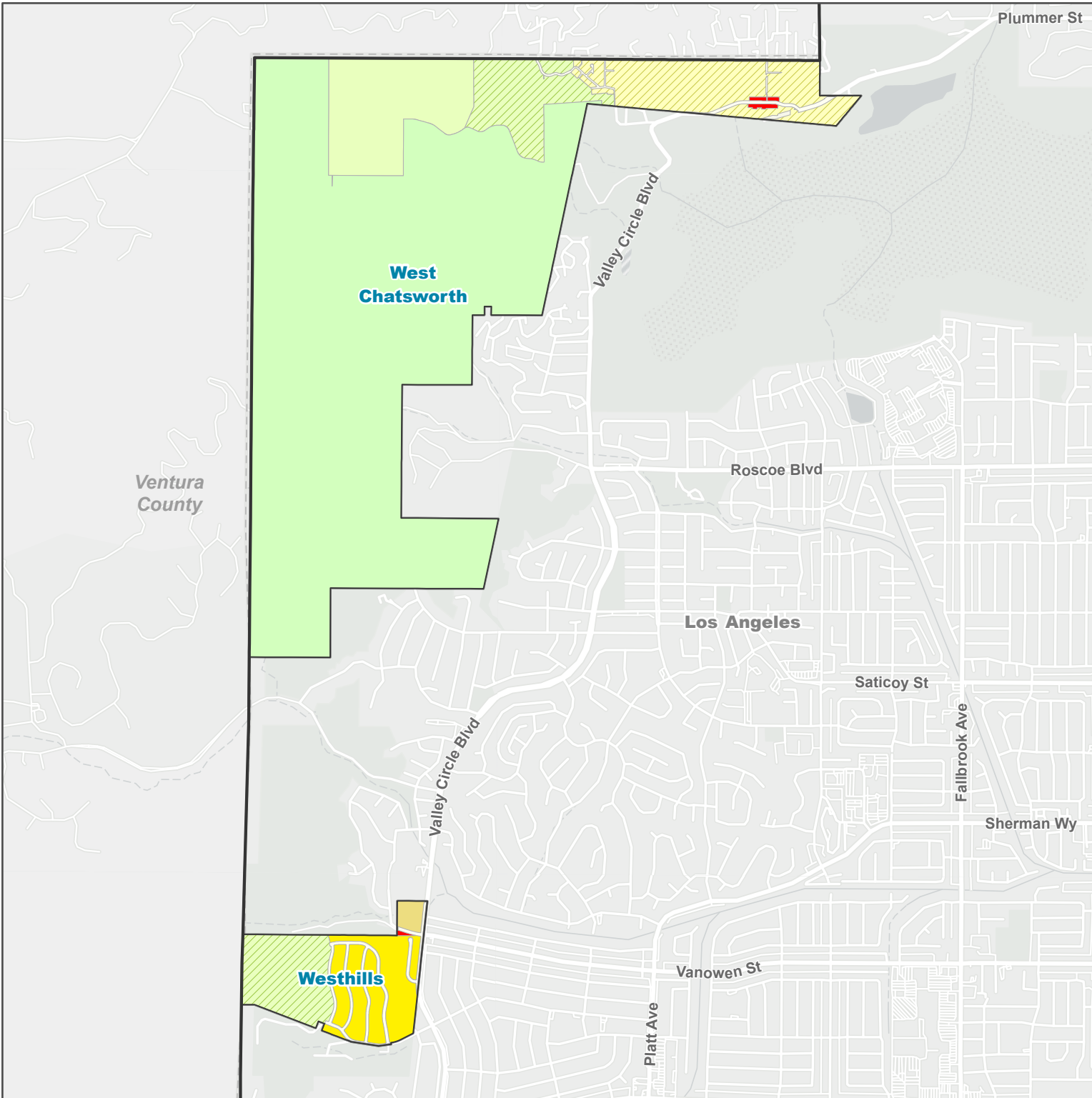
Land Use Policy

Land Use Policy - General Plan 2035

- RL1 - Rural Land 1
- RL2 - Rural Land 2
- RL10 - Rural Land 10
- H5 - Residential 5
- H9 - Residential 9
- H18 - Residential 18
- CG - General Commercial

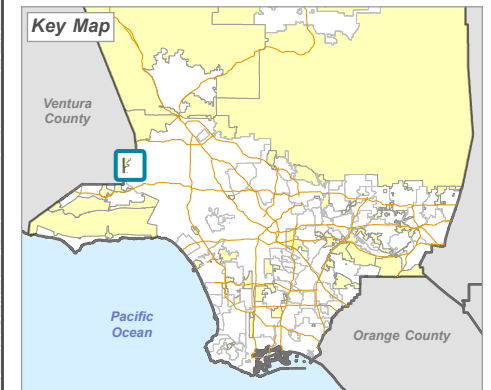
Base Layers

- County Boundary
- Other Unincorporated Community
- Incorporated City



Ventura County

Los Angeles



LA COUNTY
PLANNING

LOS ANGELES COUNTY
Dept. of Regional Planning
320 W. Temple St.
Los Angeles, CA 90012



Prepared by DRP GIS Section / May 2024