

**Valinda**

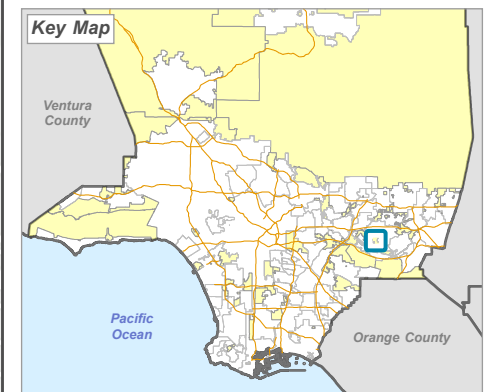
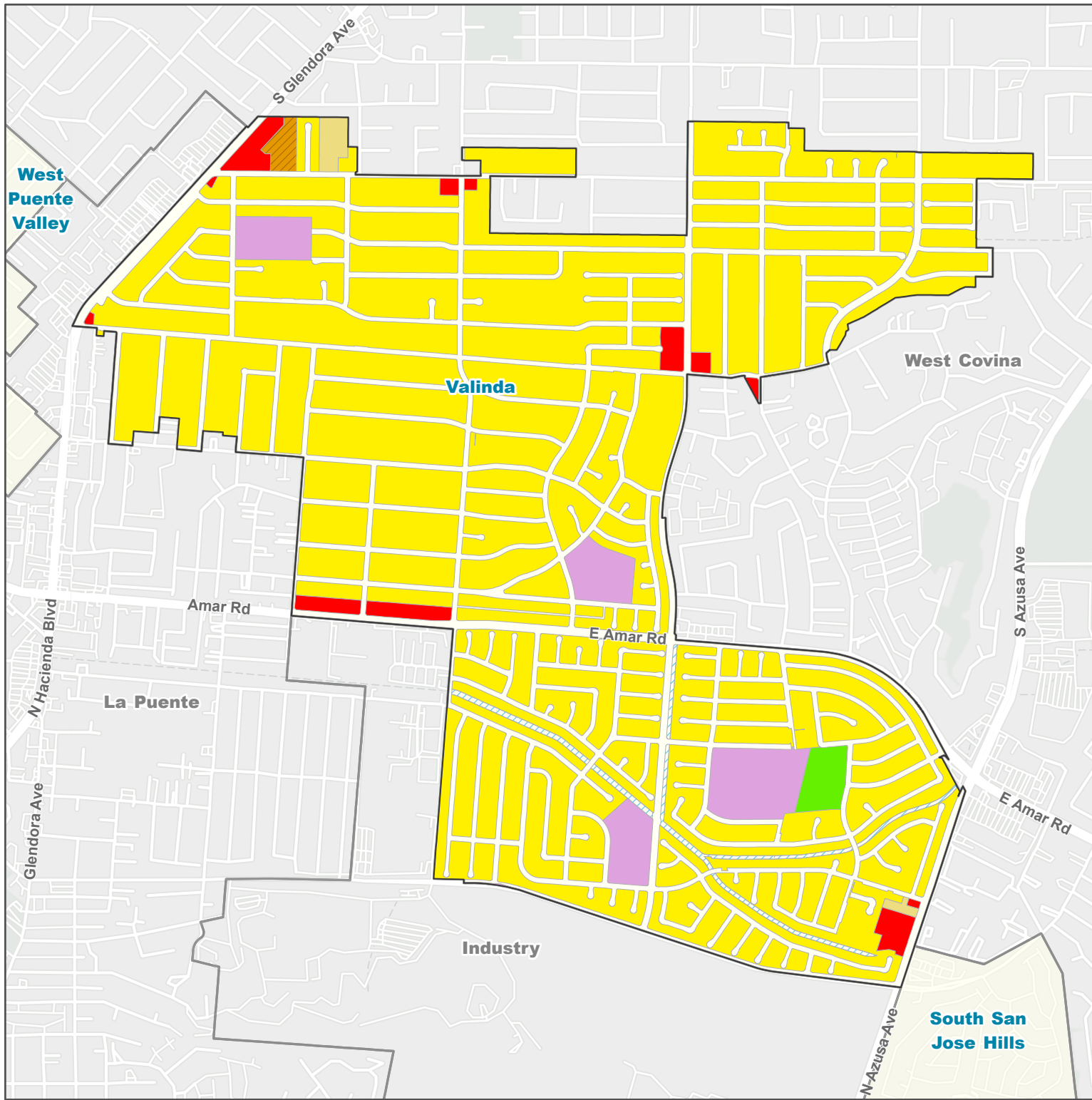
**Land Use Policy**

**Land Use Policy - General Plan 2035**

- H9 - Residential 9
- H18 - Residential 18
- H50 - Residential 50
- CG - General Commercial
- P - Public and Semi-Public
- OS-PR - Parks and Recreation
- W - Water

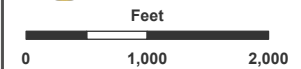
**Base Layers**

- Other Unincorporated Community
- Incorporated City



**LA COUNTY**  
**PLANNING**

LOS ANGELES COUNTY  
Dept. of Regional Planning  
320 W. Temple St.  
Los Angeles, CA 90012



Prepared by DRP GIS Section / May 2024