

Los Angeles County **Figure A.26**
South San Jose Hills - South Walnut

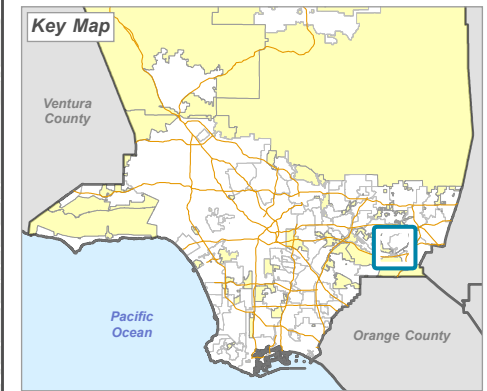
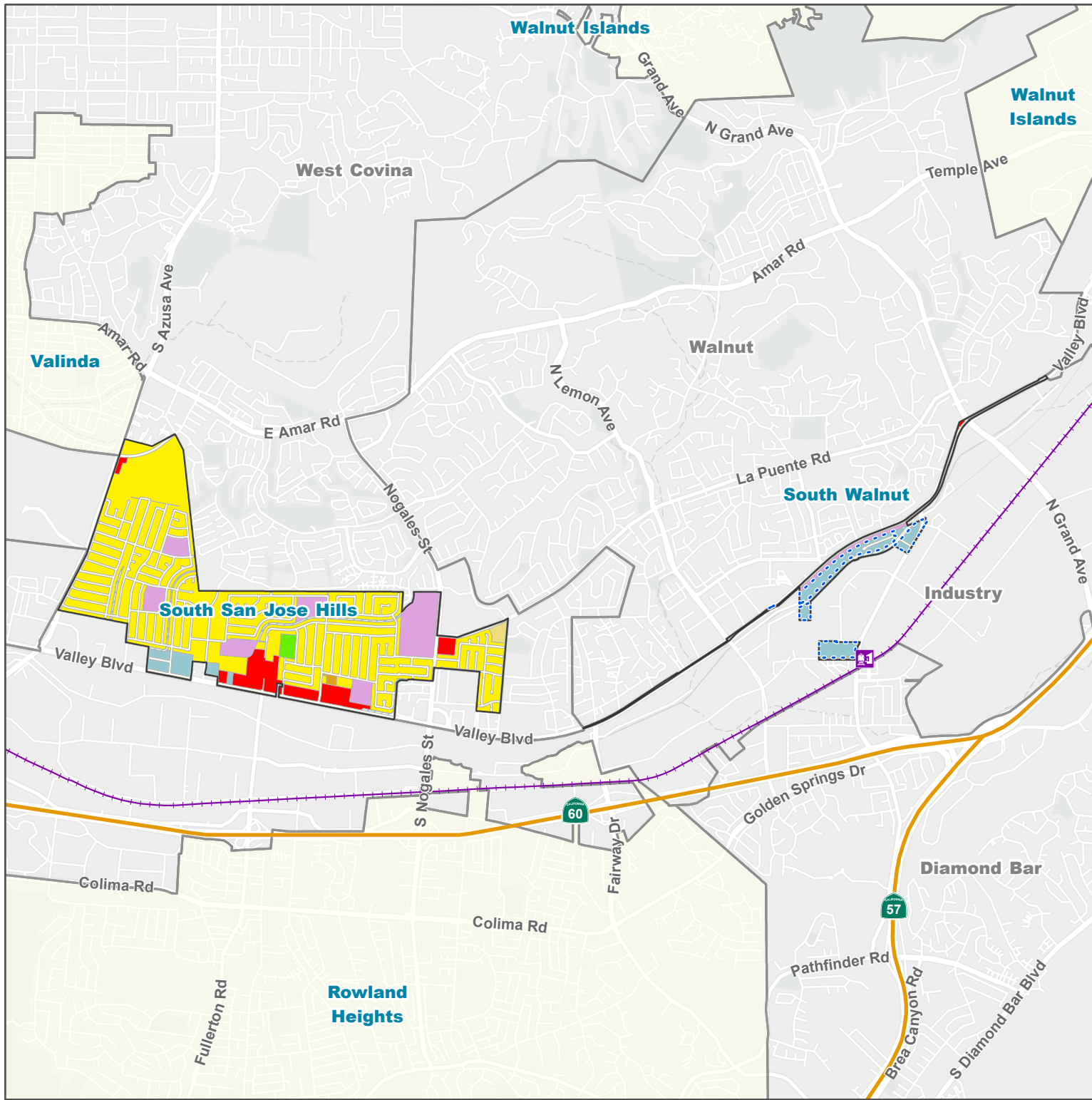
Land Use Policy

Land Use Policy - General Plan 2035

- H9 - Residential 9
- H18 - Residential 18
- H30 - Residential 30
- CG - General Commercial
- IL - Light Industrial
- P - Public and Semi-Public
- OS-PR - Parks and Recreation
- W - Water
- Employment Protection District

Base Layers

- Metrolink Stations
- Metrolink
- Other Unincorporated Community
- Incorporated City



LA COUNTY
PLANNING

LOS ANGELES COUNTY
 Dept. of Regional Planning
 320 W. Temple St.
 Los Angeles, CA 90012



Prepared by DRP GIS Section / May 2024