

South San Gabriel

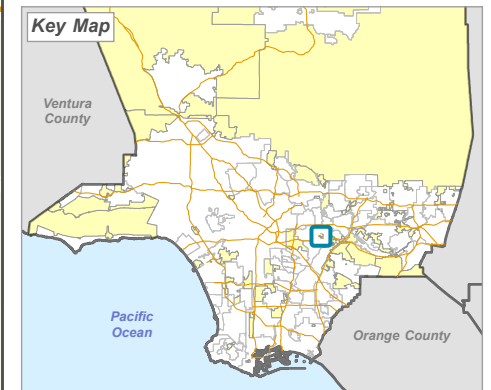
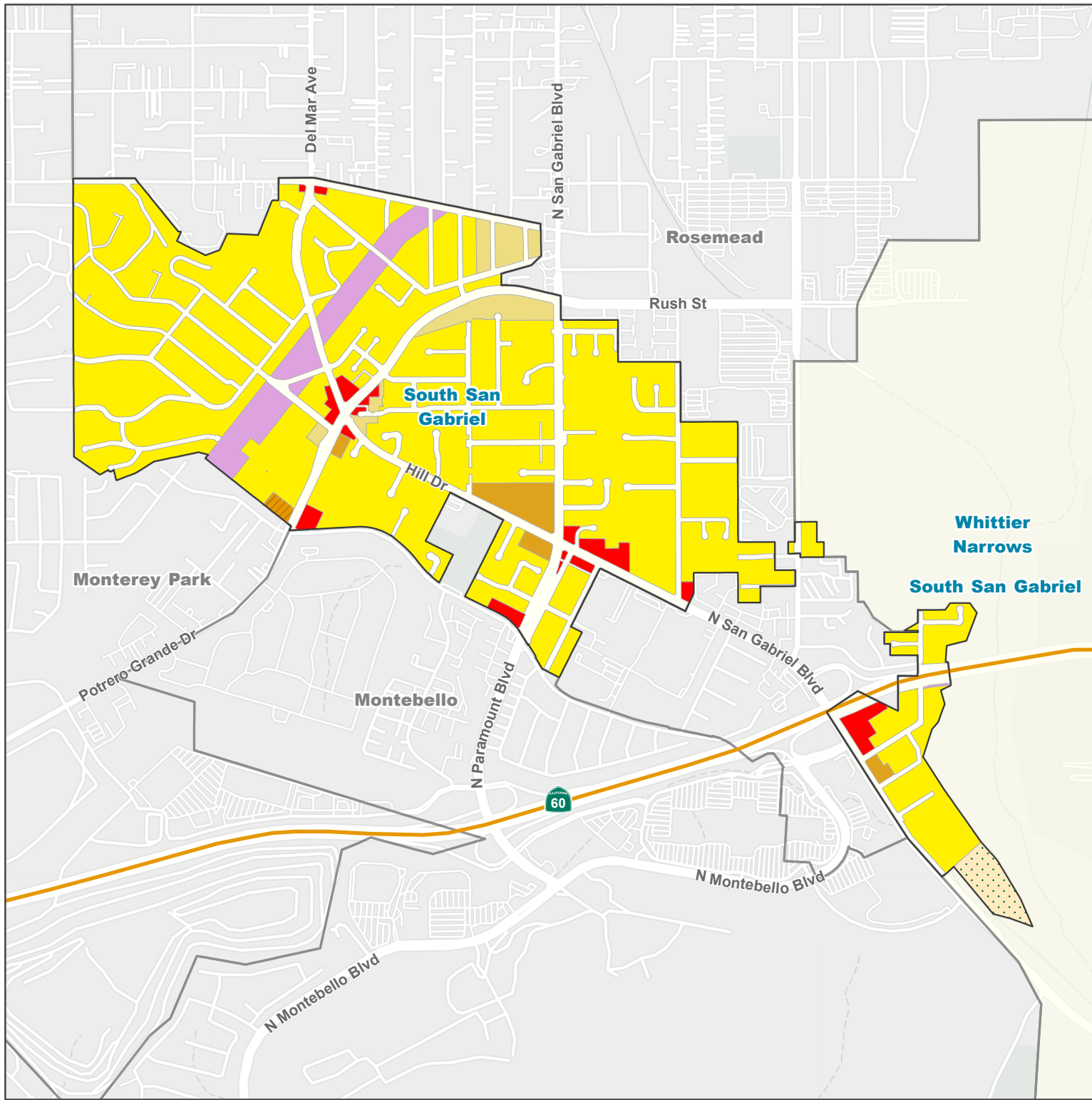
Land Use Policy

Land Use Policy - General Plan 2035

- H9 - Residential 9
- H18 - Residential 18
- H30 - Residential 30
- H50 - Residential 50
- CG - General Commercial
- P - Public and Semi-Public
- OS-PR - Parks and Recreation
- MR - Mineral Resources

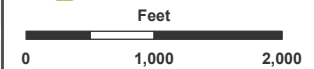
Base Layers

- Other Unincorporated Community
- Incorporated City



LA COUNTY
PLANNING

LOS ANGELES COUNTY
Dept. of Regional Planning
320 W. Temple St.
Los Angeles, CA 90012



Prepared by DRP GIS Section / May 2024