

**Lennox**

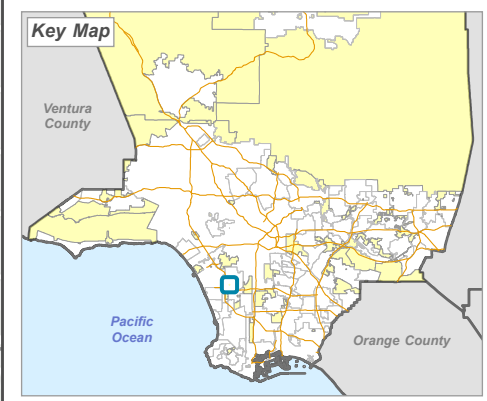
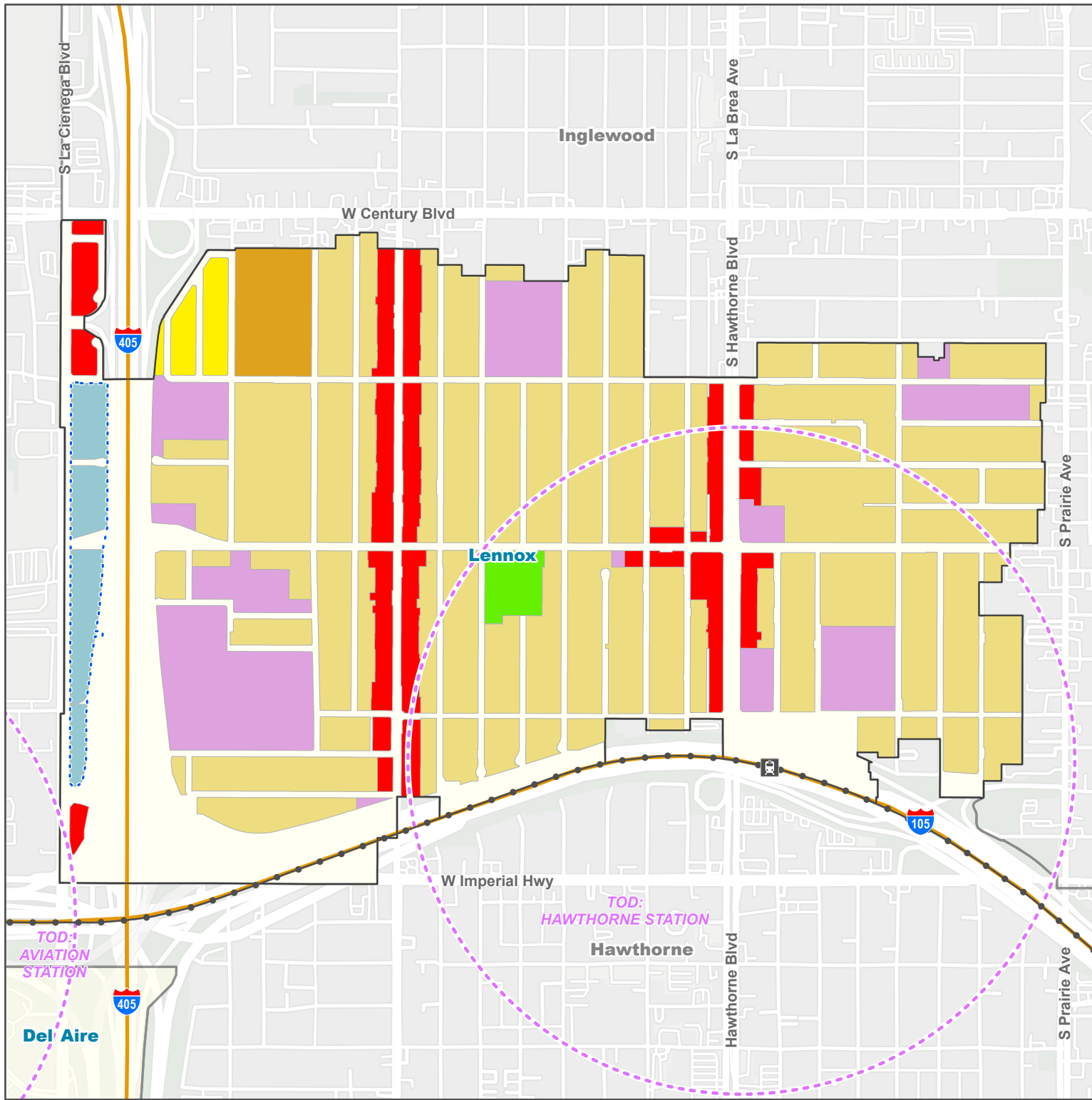
**Land Use Policy**


**Land Use Policy - General Plan 2035**

- H9 - Residential 9
- H18 - Residential 18
- H30 - Residential 30
- CG - General Commercial
- IL - Light Industrial
- P - Public and Semi-Public
- OS-PR - Parks and Recreation
- Employment Protection District
- Transit Oriented District

**Base Layers**

- Metro Rail Stations
- Metro Lines (existing)
- Other Unincorporated Community
- Incorporated City







**LA COUNTY**  
**PLANNING**

LOS ANGELES COUNTY  
Dept. of Regional Planning  
320 W. Temple St.  
Los Angeles, CA 90012

Feet



0 900 1,800



Prepared by DRP GIS Section / May 2024