

**Ladera Heights - View Park - Windsor Hills**

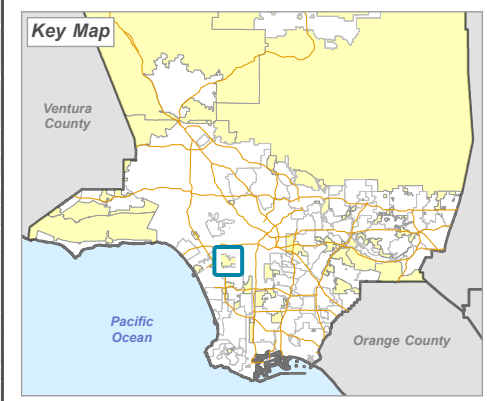
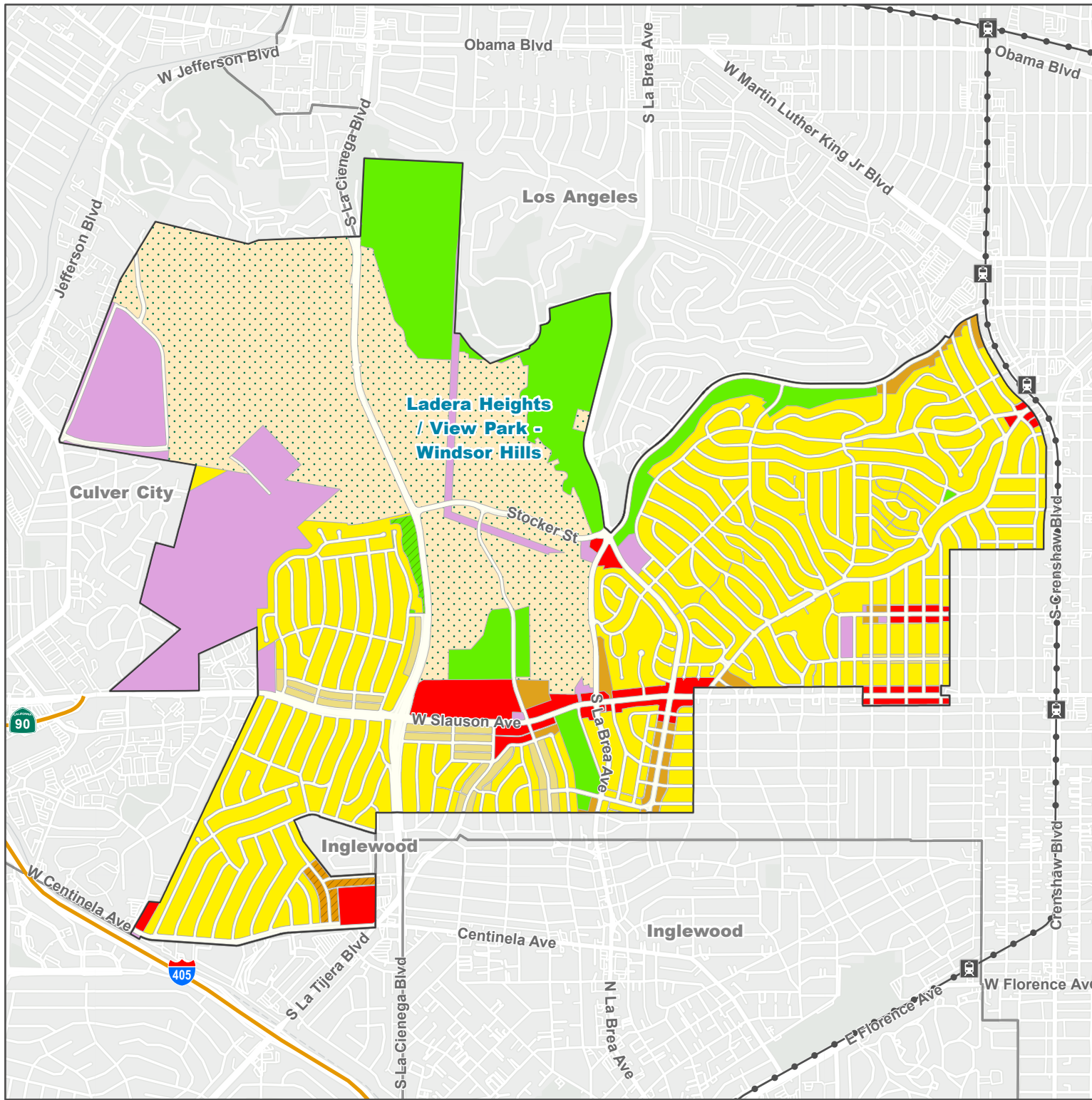
*Land Use Policy*


**Land Use Policy - General Plan 2035**

- H9 - Residential 9
- H18 - Residential 18
- H30 - Residential 30
- H50 - Residential 50
- CG - General Commercial
- P - Public and Semi-Public
- OS-C - Conservation
- OS-PR - Parks and Recreation
- MR - Mineral Resources

**Base Layers**

- Metro Rail Stations
- Metro Lines (existing)
- Other Unincorporated Community
- Incorporated City







**LA COUNTY**  
**PLANNING**

LOS ANGELES COUNTY  
Dept. of Regional Planning  
320 W. Temple St.  
Los Angeles, CA 90012

Feet



0 2,000 4,000



Prepared by DRP GIS Section / May 2024