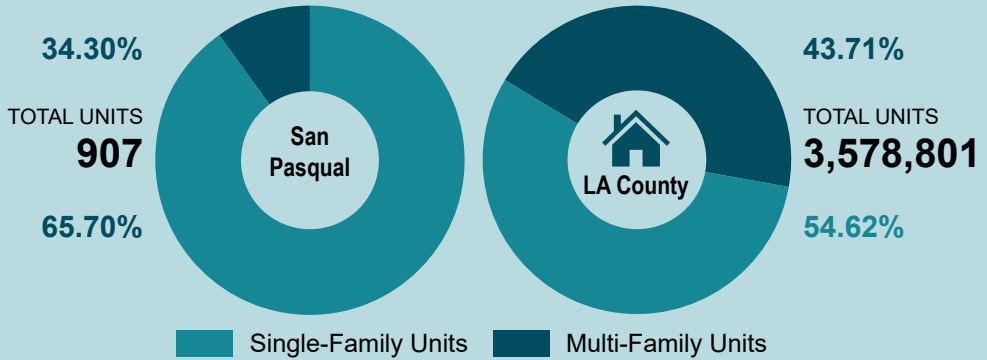
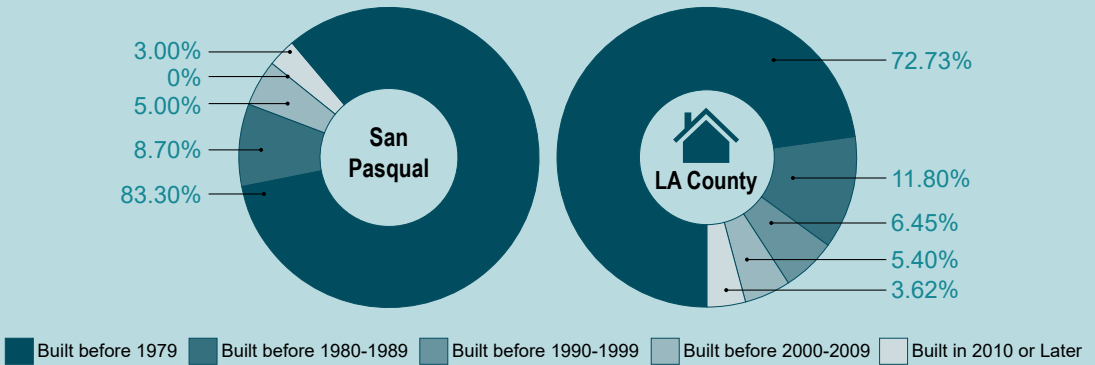


## HOUSING UNIT



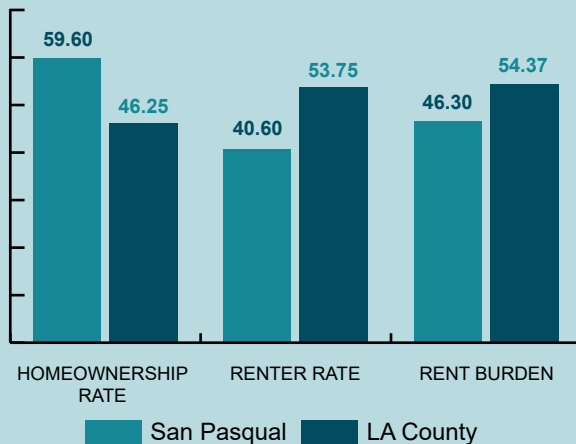
Source: American Community Survey, 2021, 5-year estimates, Table B25001, 2021

## HOUSING STOCK AGE



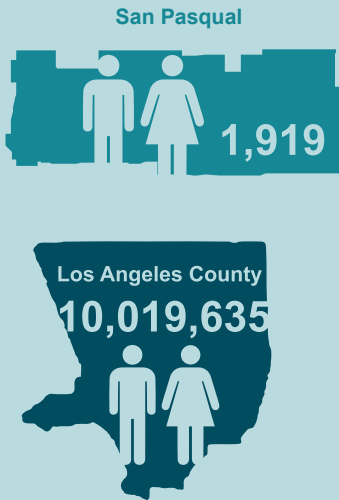
Source: American Community Survey, 2021, 5-year estimates, Table B25034, 2021

## HOMEOWNERSHIP RATE (%)



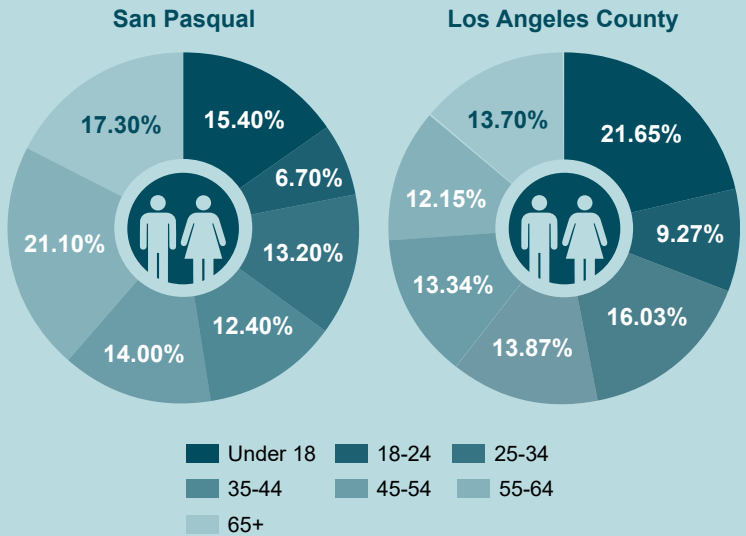
Source: American Community Survey, 2021, 5-year estimates, Table B25003, 2021

## TOTAL POPULATION



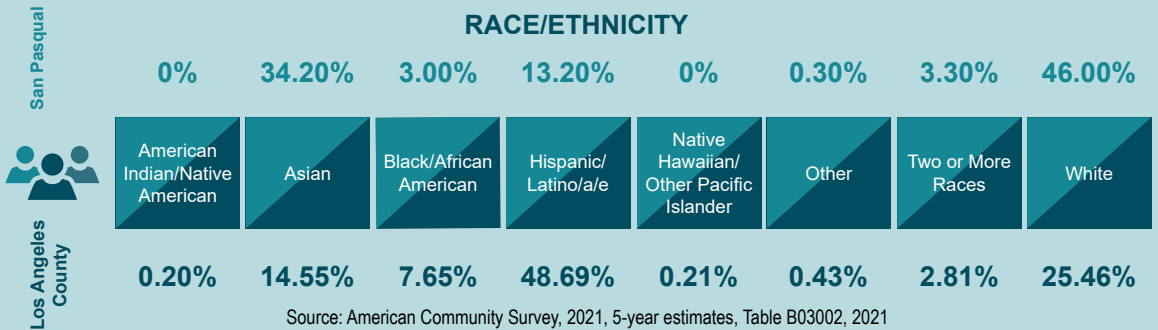
Source: American Community Survey, 5-year estimates, Table B01003, 2021

## AGE



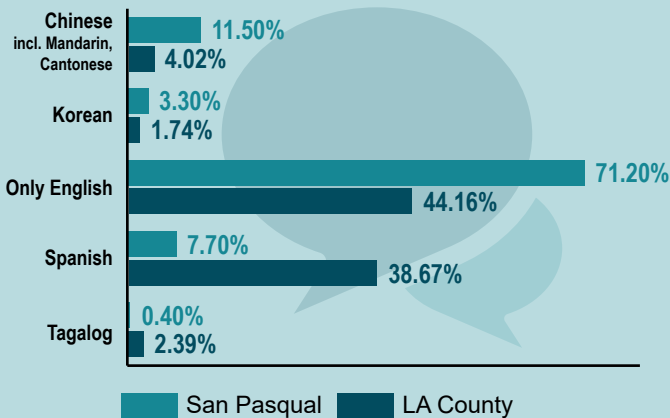
Source: American Community Survey, 2021, 5-year estimates, Table B01001, 2021

## RACE/ETHNICITY



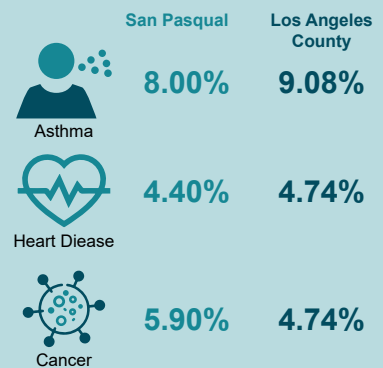
Source: American Community Survey, 2021, 5-year estimates, Table B03002, 2021

## LANGUAGE SPOKEN AT HOME



## HEALTH CHARACTERISTICS

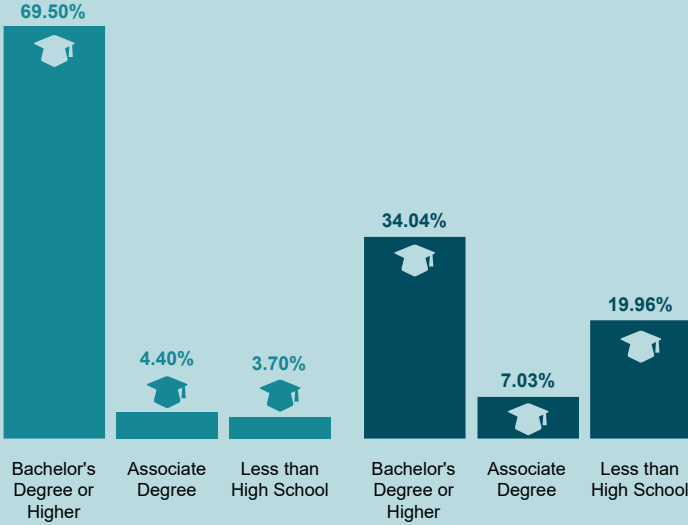
Percent of Adult Population



\*The percentage of people 5 years and older who speak mostly the language at home.  
Source: American Community Survey, 5-year estimates, Table C16001, 2021

Source: Centers for Disease Control and Prevention – Division of Population Health PLACES Initiative, 2020

## EDUCATIONAL ATTAINMENT

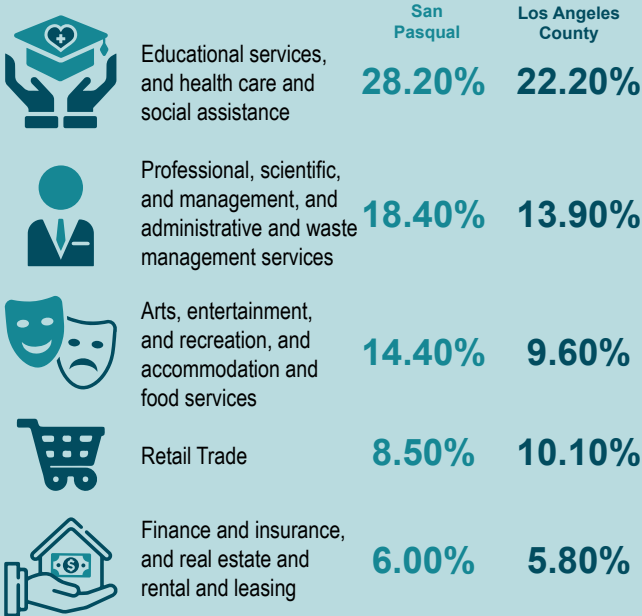


San Pasqual

Los Angeles County

American Community Survey, 5-year estimates, Tables B14004, B15002, 2021  
 Note: 5-year estimates are an average of the preceding 5 years

## EMPLOYMENT INDUSTRY



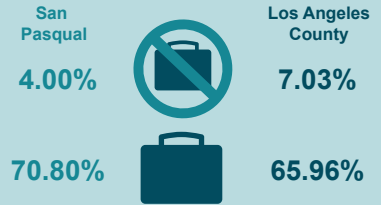
Source: American Community Survey, 5-year estimates, Table DP03, 2021

## MEDIAN HOUSEHOLD INCOME



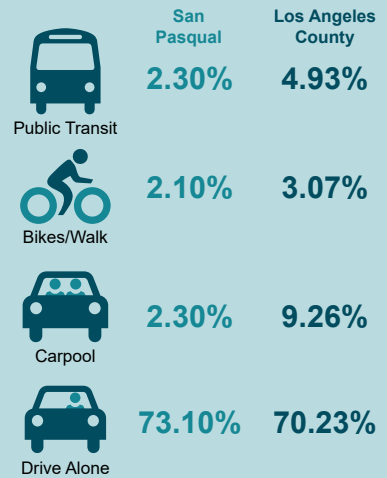
Source: American Community Survey, 5-year estimates, Table B19013, 2021

## EMPLOYMENT/UNEMPLOYMENT



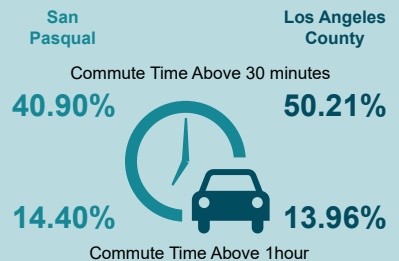
Source: American Community Survey, 5-year estimates, Table B23001, 2021

## COMMUTE MODE



Source: American Community Survey, 5-year estimates, Table B08301, 2021

## COMMUTE TIME



Source: American Community Survey, 5-year estimates, Table S0801, 2021