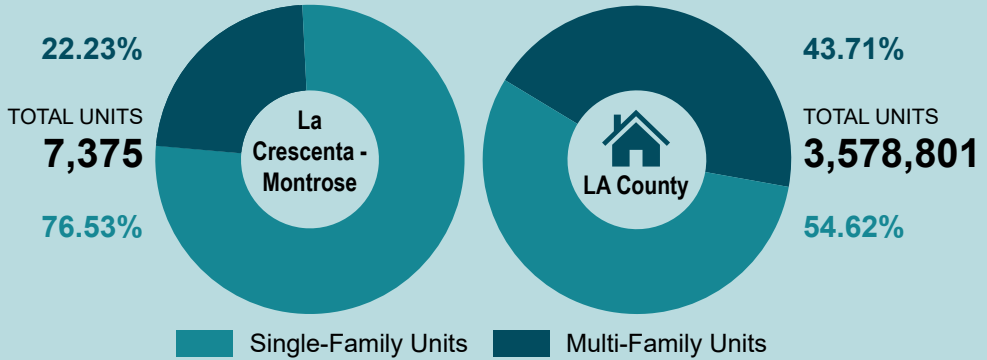
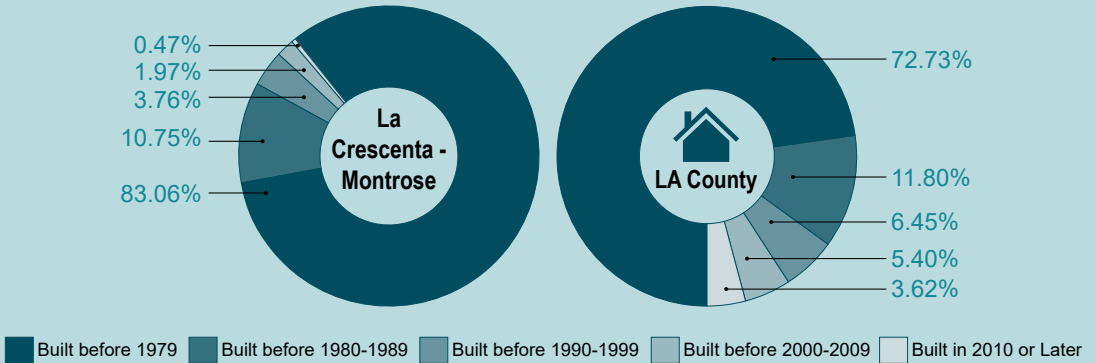


HOUSING UNIT



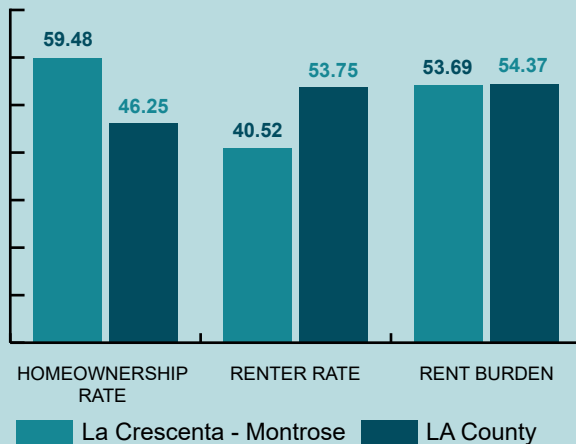
Source: American Community Survey, 2021, 5-year estimates, Table B25001, 2021

HOUSING STOCK AGE



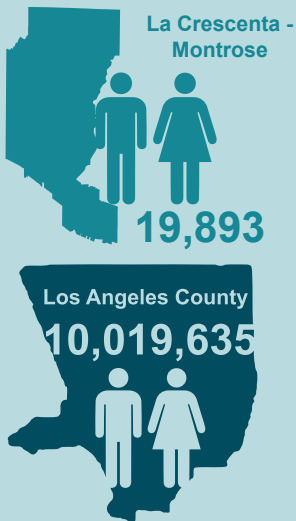
Source: American Community Survey, 2021, 5-year estimates, Table B25034, 2021

HOMEOWNERSHIP RATE (%)



Source: American Community Survey, 2021, 5-year estimates, Table B25003, 2021

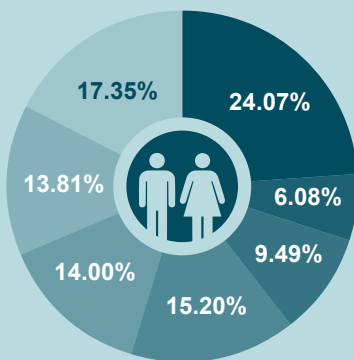
TOTAL POPULATION



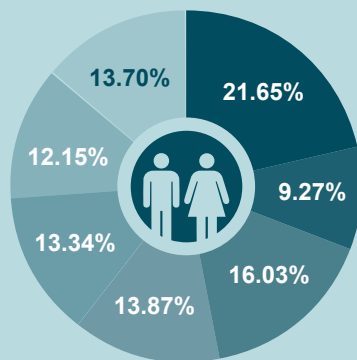
Source: American Community Survey, 5-year estimates, Table B01003, 2021

AGE

La Crescenta - Montrose



Los Angeles County



Under 18
 18-24
 25-34
 35-44
 45-54
 55-64
 65+

Source: American Community Survey, 2021, 5-year estimates, Table B01001, 2021

RACE/ETHNICITY

La Crescenta - Montrose

0.13% 26.36% 0.39% 17.98% 0.29% 0.19% 7.79% 46.87%

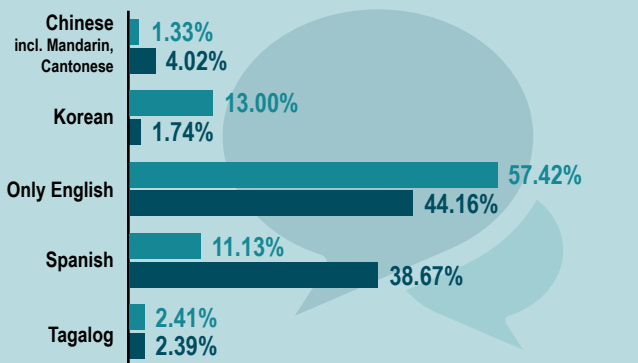


Los Angeles County

0.20% 14.55% 7.65% 48.69% 0.21% 0.43% 2.81% 25.46%

Source: American Community Survey, 2021, 5-year estimates, Table B03002, 2021

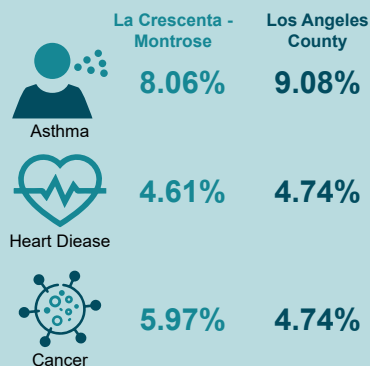
LANGUAGE SPOKEN AT HOME



La Crescenta - Montrose
 LA County

HEALTH CHARACTERISTICS

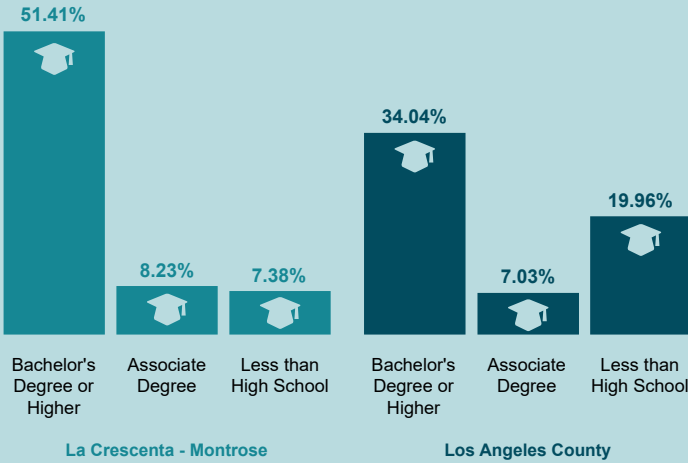
Percent of Adult Population



*The percentage of people 5 years and older who speak mostly the language at home.
Source: American Community Survey, 5-year estimates, Table C16001, 2021

Source: Centers for Disease Control and Prevention – Division of Population Health PLACES Initiative, 2020

EDUCATIONAL ATTAINMENT



American Community Survey, 5-year estimates, Tables B14004, B15002, 2021
 Note: 5-year estimates are an average of the preceding 5 years

MEDIAN HOUSEHOLD INCOME



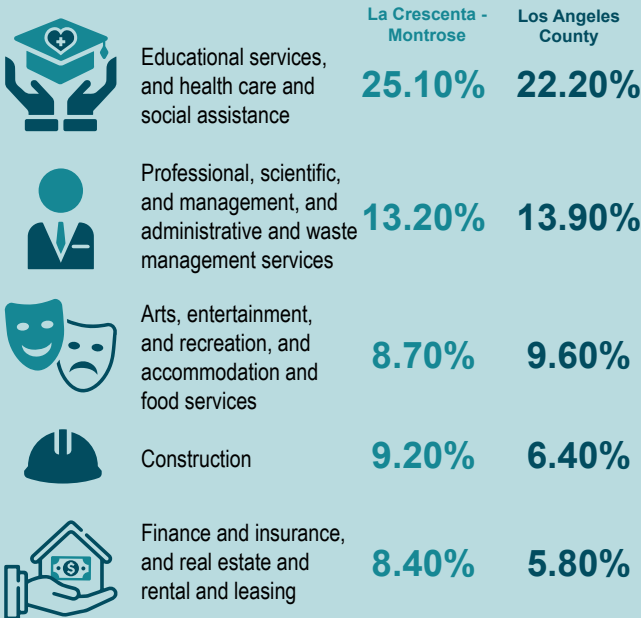
Source: American Community Survey, 5-year estimates, Table B19013, 2021

EMPLOYMENT/UNEMPLOYMENT



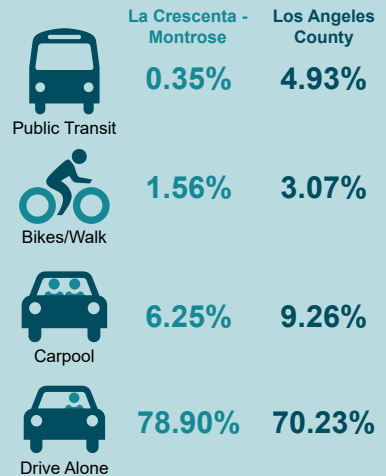
Source: American Community Survey, 5-year estimates, Table B23001, 2021

EMPLOYMENT INDUSTRY



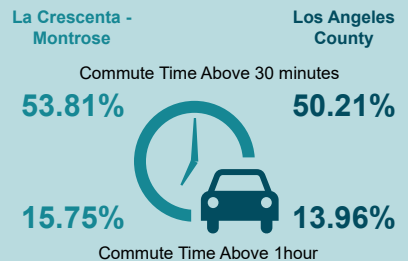
Source: American Community Survey, 5-year estimates, Table DP03, 2021

COMMUTE MODE



Source: American Community Survey, 5-year estimates, Table B08301, 2021

COMMUTE TIME



Source: American Community Survey, 5-year estimates, Table S0801, 2021