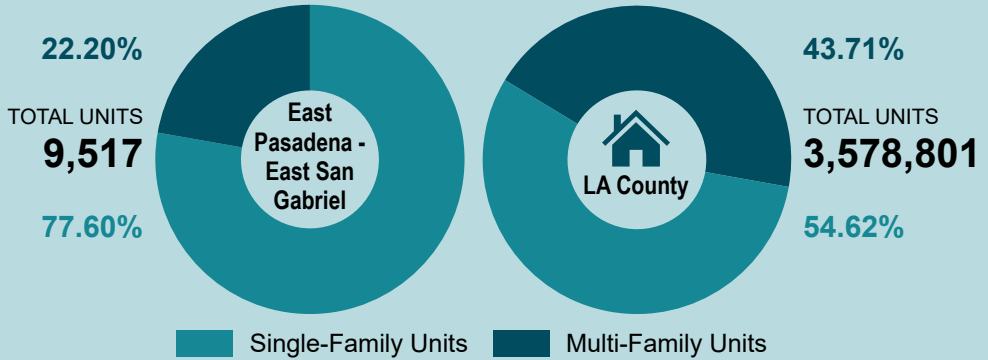
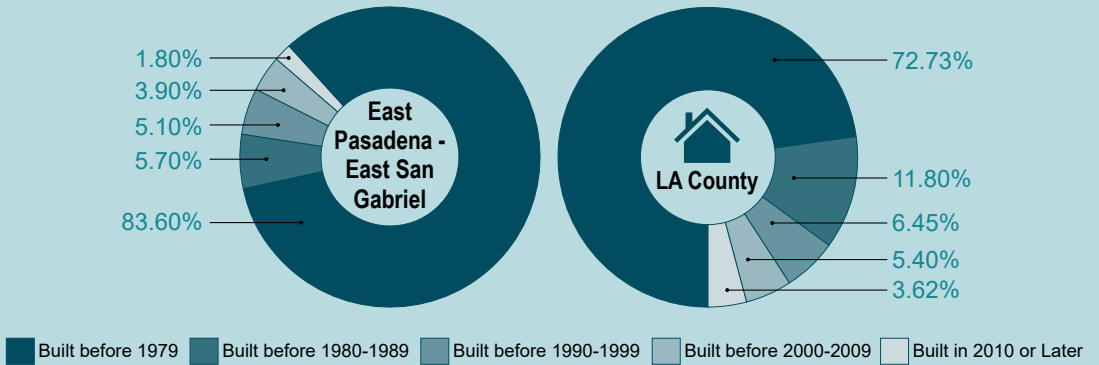


HOUSING UNIT



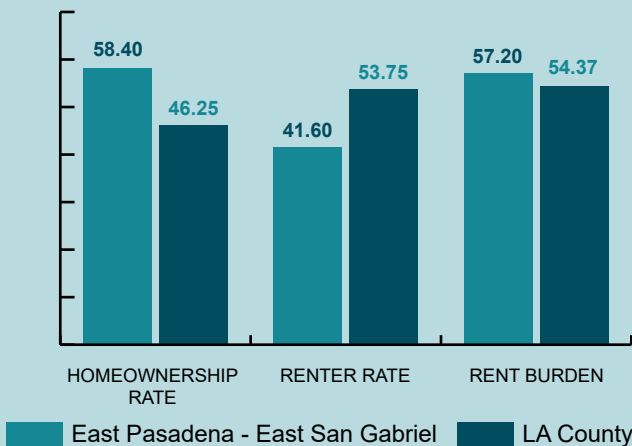
Source: American Community Survey, 2021, 5-year estimates, Table B25001, 2021

HOUSING STOCK AGE



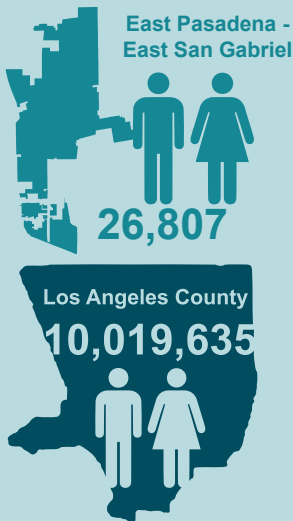
Source: American Community Survey, 2021, 5-year estimates, Table B25034, 2021

HOMEOWNERSHIP RATE (%)



Source: American Community Survey, 2021, 5-year estimates, Table B25003, 2021

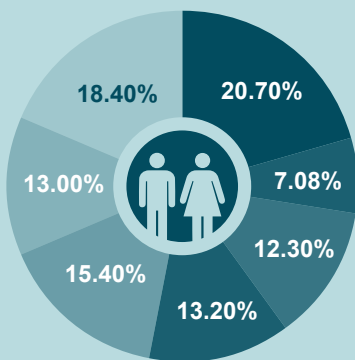
TOTAL POPULATION



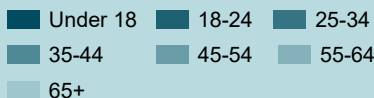
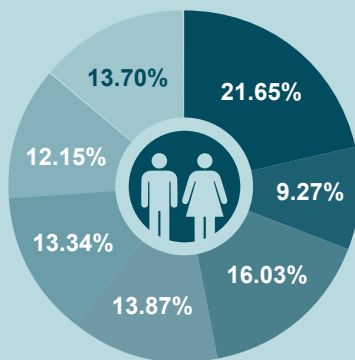
Source: American Community Survey, 5-year estimates, Table B01003, 2021

AGE

East Pasadena - East San Gabriel

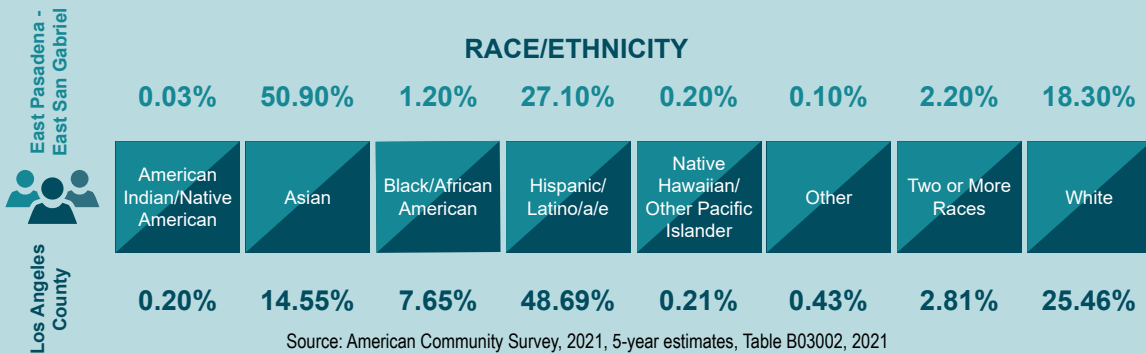


Los Angeles County



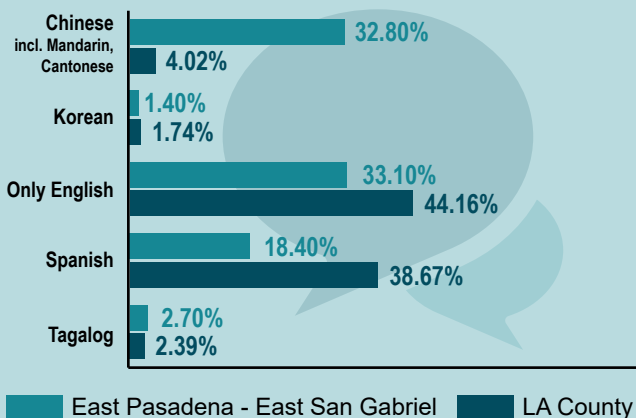
Source: American Community Survey, 2021, 5-year estimates, Table B01001, 2021

RACE/ETHNICITY



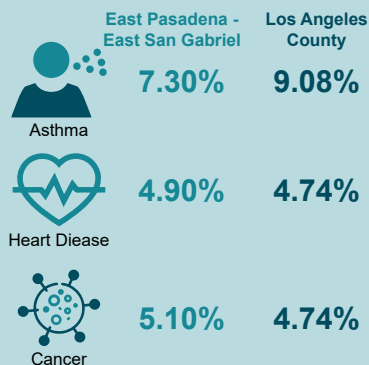
Source: American Community Survey, 2021, 5-year estimates, Table B03002, 2021

LANGUAGE SPOKEN AT HOME



HEALTH CHARACTERISTICS

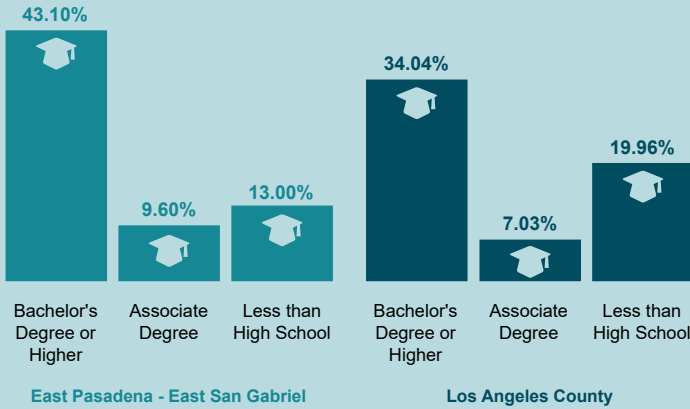
Percent of Adult Population



*The percentage of people 5 years and older who speak mostly the language at home.
Source: American Community Survey, 5-year estimates, Table C16001, 2021

Source: Centers for Disease Control and Prevention – Division of Population Health PLACES Initiative, 2020

EDUCATIONAL ATTAINMENT



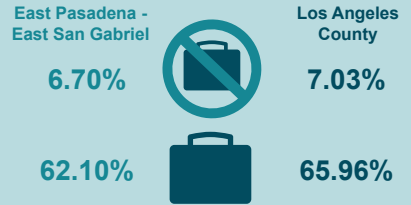
American Community Survey, 5-year estimates, Tables B14004, B15002, 2021
 Note: 5-year estimates are an average of the preceding 5 years

MEDIAN HOUSEHOLD INCOME



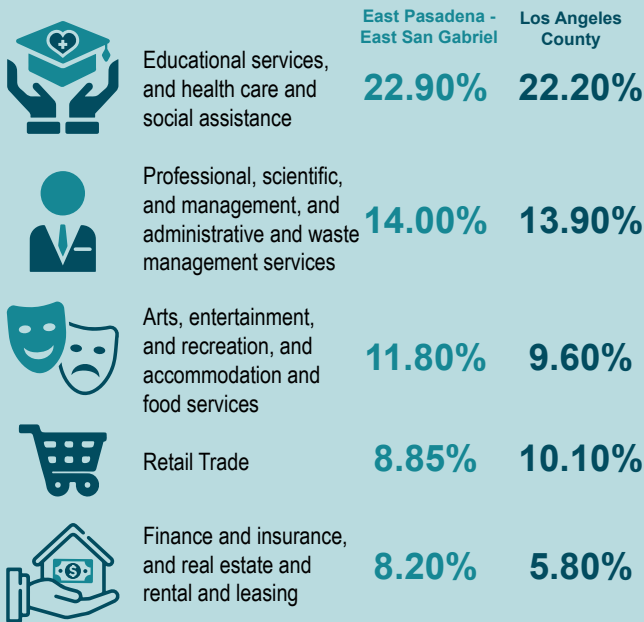
Source: American Community Survey, 5-year estimates, Table B19013, 2021

EMPLOYMENT/UNEMPLOYMENT



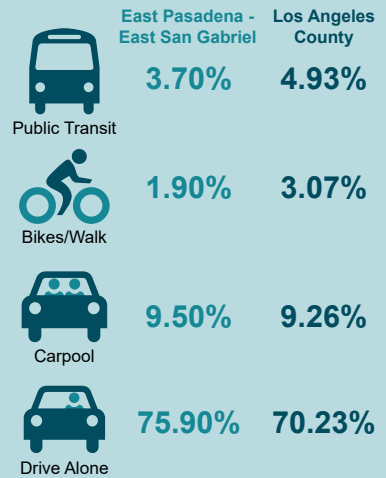
Source: American Community Survey, 5-year estimates, Table B23001, 2021

EMPLOYMENT INDUSTRY



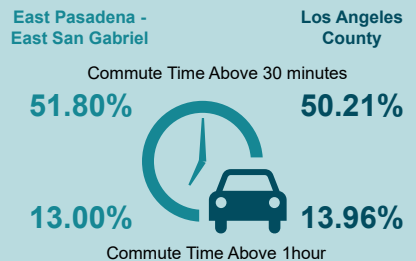
Source: American Community Survey, 5-year estimates, Table DP03, 2021

COMMUTE MODE



Source: American Community Survey, 5-year estimates, Table B08301, 2021

COMMUTE TIME



Source: American Community Survey, 5-year estimates, Table S0801, 2021