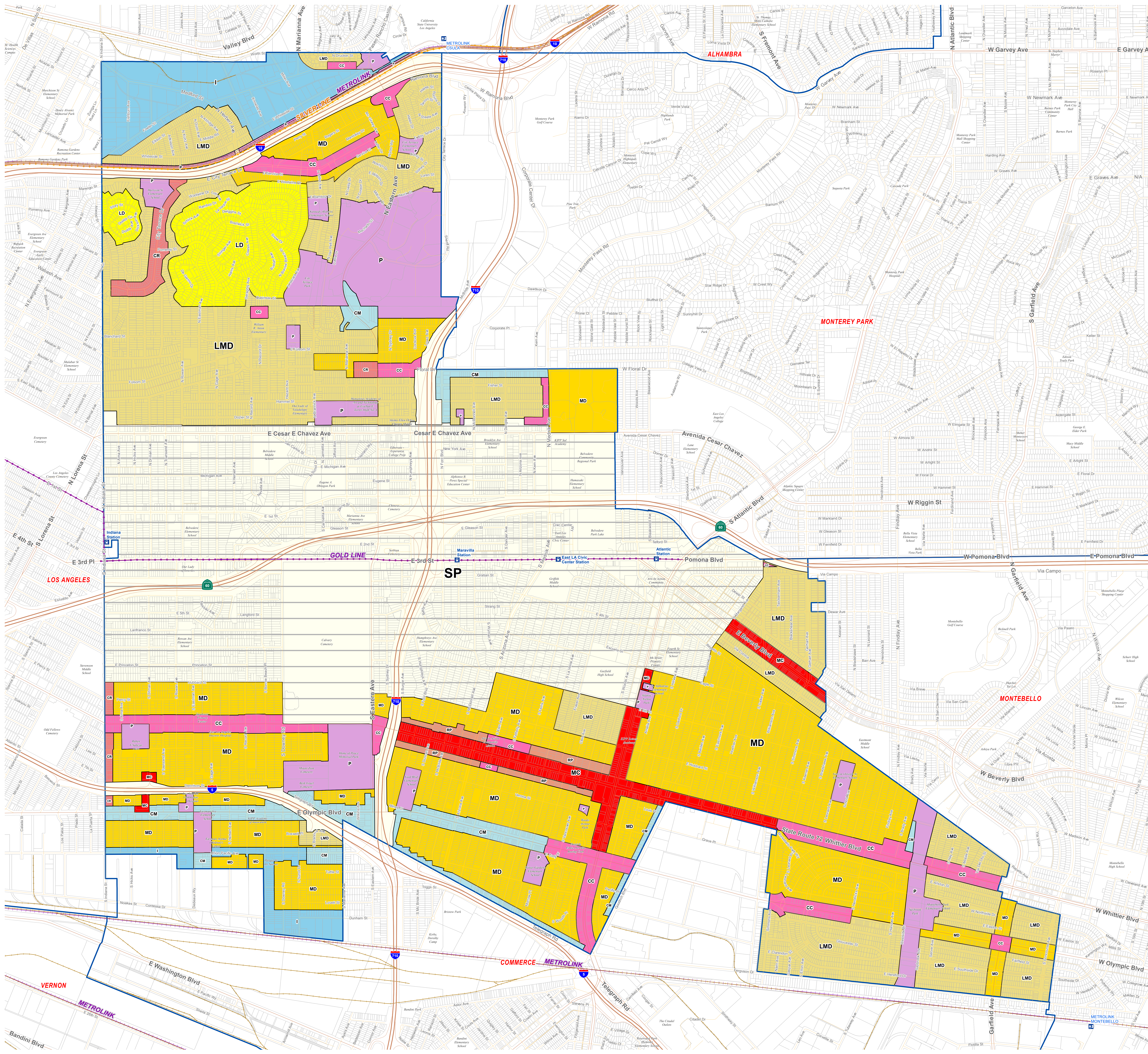


Los Angeles County

EAST LOS ANGELES Community Plan

Adopted by Board of Supervisors - 6/23/88

As Amended Through - 2/23/21 (LP 2018-000234)



LEGEND

Land Use Policy

- LD - Low Density Residential (8 du/ac)
- LMD - Low/Medium Density Residential (17 du/ac)
- MD - Medium Density Residential (30 du/ac)
- RP - Residential Parking
- CR - Commercial Residential (30 du/ac)
- CC - Community Commercial
- MC - Major Commercial
- CM - Commercial Manufacturing
- I - Industrial
- P - Public Use
- SP - Specific Plan

Transit Lines

- Metrolink Stations
- Metro Rail Stations
- Metrolink
- Transitways
- Light Rail - Existing
- Light Rail - Proposed
- Light Rail - Under Construction

Base Features

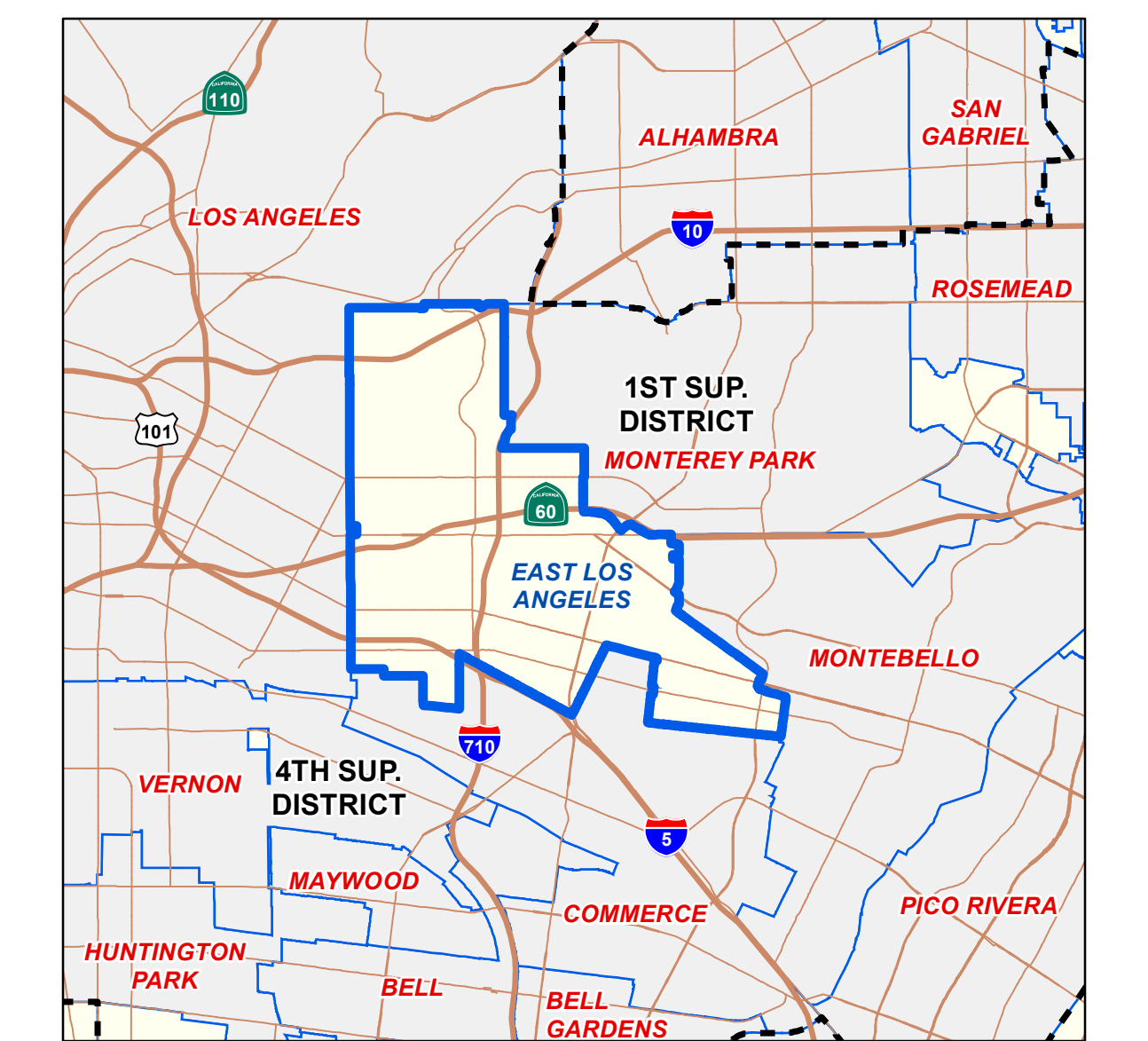
- Parcels
- City / Unincorporated Community Boundary
- Surrounding City
- Surrounding Unincorporated Community

NOTES:

This policy map depicts generalized land use classifications, each of which is intended to describe the dominant use characteristics within the area covered. The location of planning boundaries is as accurate as can be portrayed at this scale. The actual use and intensity of development that may be allowed on private property within any given land classification is determined by a review of this policy map, other mapped and written policies of the Plan, and the underlying zoning classification. For a professional evaluation of what uses may be allowed in a given land use classification, please contact the Land Development Coordinating Center (LDCC) at (213) 974-6411.

Parcel boundaries are from the parcel database maintained by the Department of Public Works and the Assessor's Office. Parcels shown on the map reflect the most recent update from the Assessor's Office as of the "Current As of" date listed below. Dashed lines represent additional parcel line work such as easements, cut/dred lines, lot lines, subdivision boundaries and tax rate area lines. Street Centerline data from 2010 TIGER (US Census Bureau), modified through the LA County Countywide Address Management System (CAMS).

VICINITY MAP:



KEY MAP:



Current as of: 9/11/2023



LOS ANGELES COUNTY Department of Regional Planning 320 W. Temple St. Los Angeles, CA 90012

