

COMMUNITY PROFILE

LA COUNTY

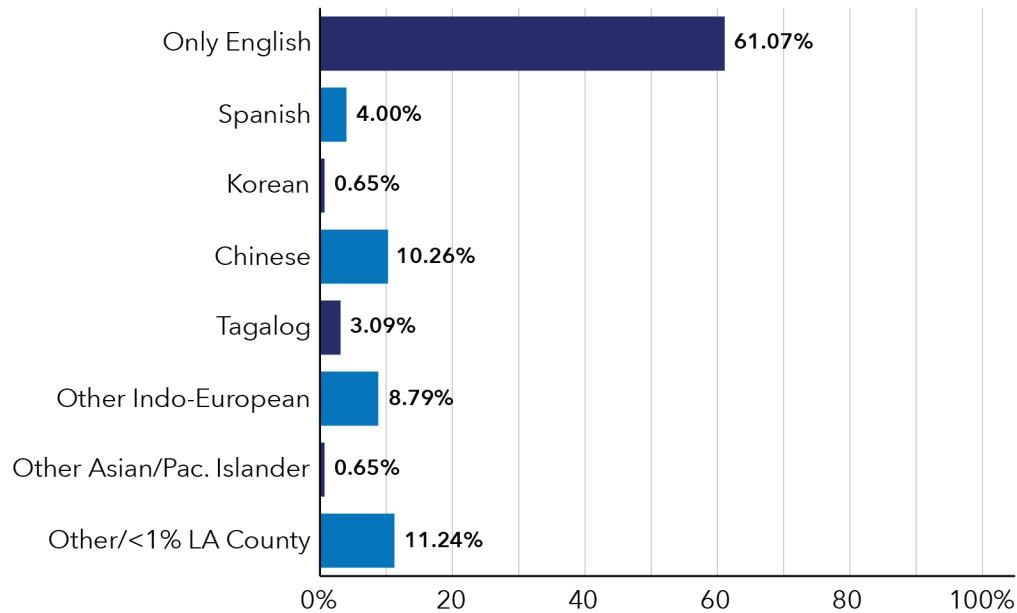
PLANNING

Unincorporated - West Chatsworth (SD: 3)

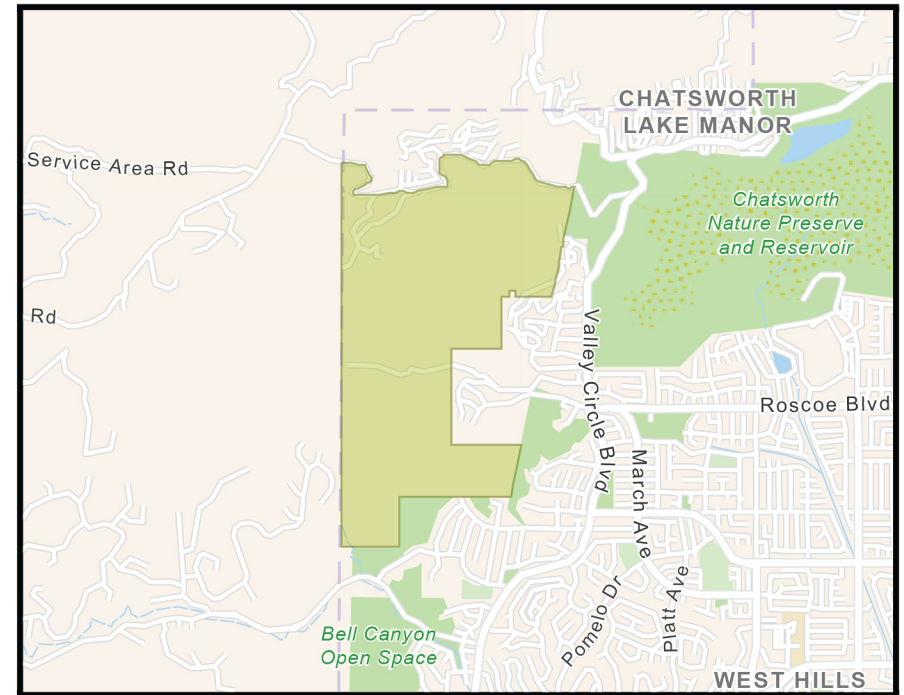
Community Profile 12

% LANGUAGE SPOKEN AT HOME

(ACS, 2021)



Only identifying languages >1% for all of LA County.



Source: Countywide Statistical Areas (2023). See [documentation](#) for details.

1.39

Area (SqMi)
(2021)

688

Total Population
(ACS 5-Yr, 2021)

501

Population Density
(per Square Mile)
(Esri, 2022)

244

Total Households
(ACS 5-Yr, 2021)

2.84

Avg Size Household
(Esri, 2022)

\$146,457

Median Household
Income
(ACS 5-Yr, 2021)

1%

Population w/Income
Below Poverty Level
(ACS 5-Yr, 2021)

6%

Unemployed
Population Age 16+
(Esri, 2022)

50.3

Median Age
(Esri, 2022)

23%

% HH with 1+
Persons with a
Disability
(ACS 5-Yr, 2021)

56.7

Diversity Index
(Esri, 2020)
(0 = No Diversity;
100 = Very Diverse)

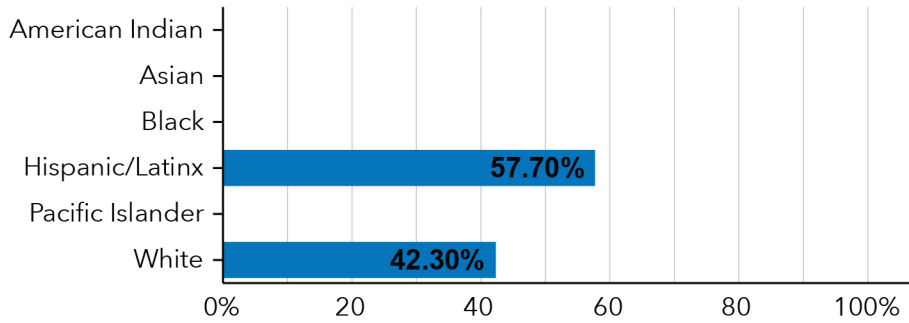
13

Total Crime Index
(Esri, 2022)
(>100 = Above avg. risk
compared to rest of US)

Read how US Census defines [poverty](#).

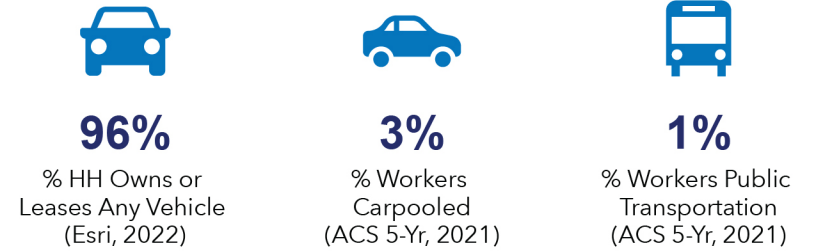
Click here to learn more about Esri's [Diversity Index](#) and [Crime Index](#).

POPULATION BY RACE/ETHNICITY

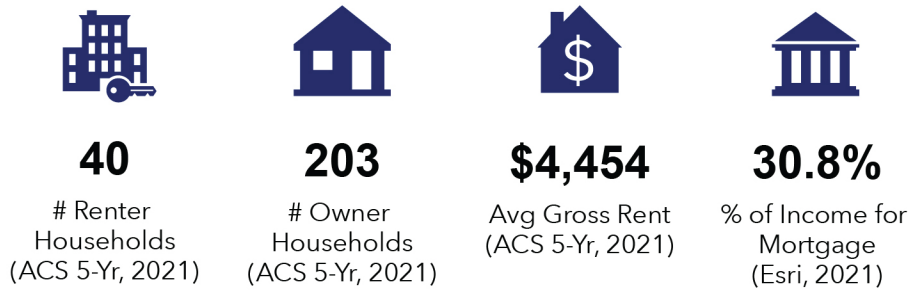


Source: LA County eGIS/Urban Research, 2021 estimates

TRANSPORTATION



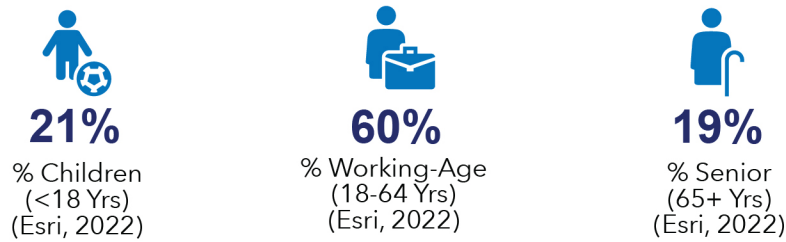
HOUSING



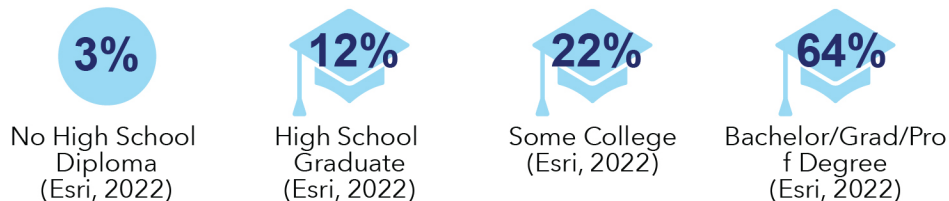
POPULATION AND BUSINESSES



AGE



EDUCATIONAL ATTAINMENT (Age 25+)



EMPLOYMENT BY SECTOR (Esri, 2022)

