

# COMMUNITY PROFILE

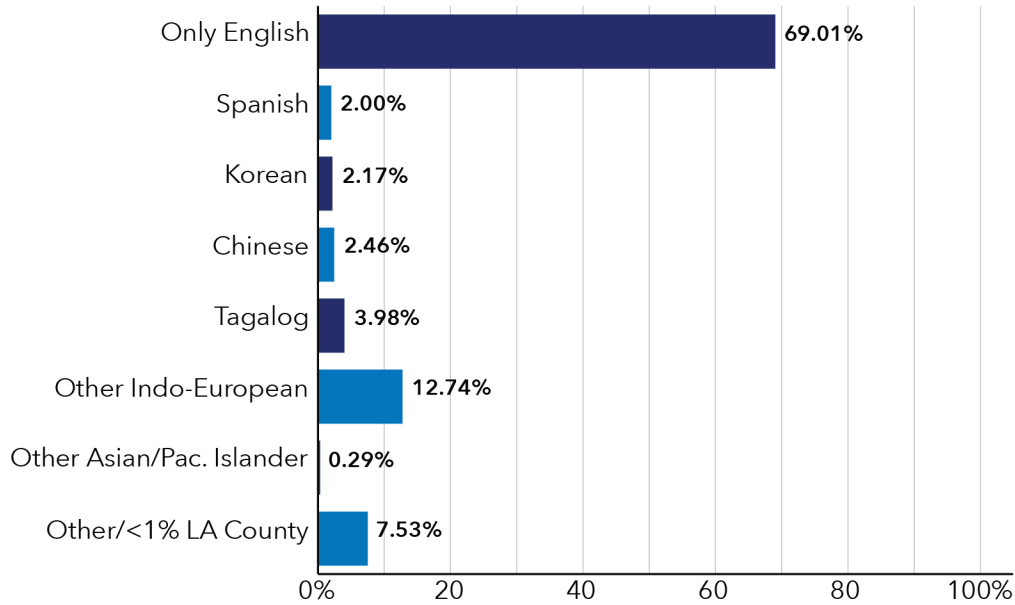
LA COUNTY

PLANNING

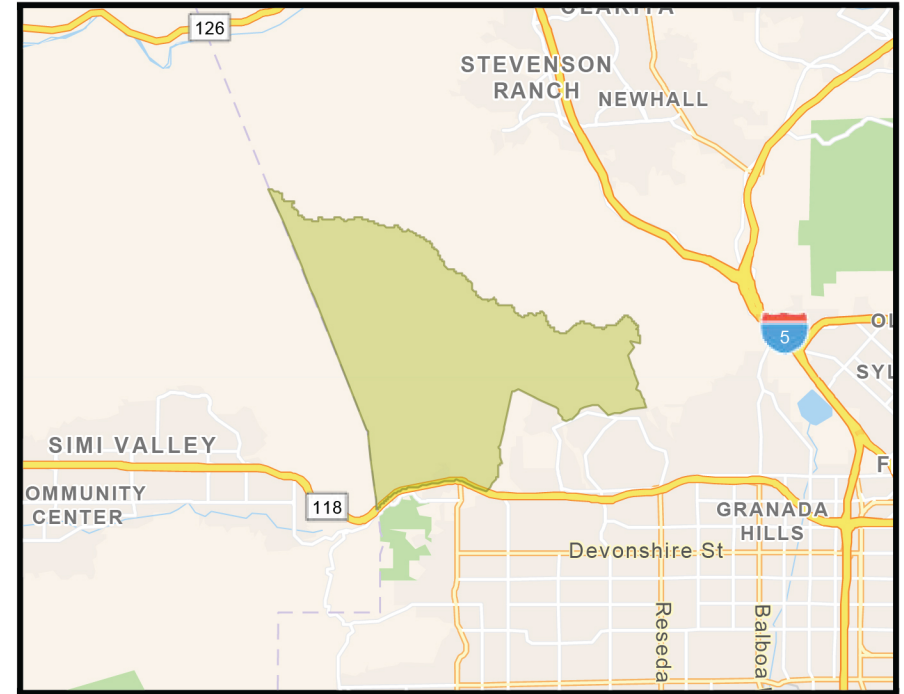
## Unincorporated - Twin Lakes/Oat Mountain (SD: 5)

### % LANGUAGE SPOKEN AT HOME

(ACS, 2021)



Only identifying languages >1% for all of LA County.



Source: Countywide Statistical Areas (2023). See [documentation](#) for details.

**19.97**

Area (SqMi)  
(2021)

**1,516**

Total Population  
(ACS 5-Yr, 2021)

**87**

Population Density  
(per Square Mile)  
(Esri, 2022)

**626**

Total Households  
(ACS 5-Yr, 2021)

**2.56**

Avg Size Household  
(Esri, 2022)

**\$113,028**

Median Household  
Income  
(ACS 5-Yr, 2021)

**7%**

Population w/Income  
Below Poverty Level  
(ACS 5-Yr, 2021)

**3%**

Unemployed  
Population Age 16+  
(Esri, 2022)

**43.0**

Median Age  
(Esri, 2022)

**9%**

% HH with 1+  
Persons with a  
Disability  
(ACS 5-Yr, 2021)

**74.8**

Diversity Index  
(Esri, 2020)  
(0 = No Diversity;  
100 = Very Diverse)

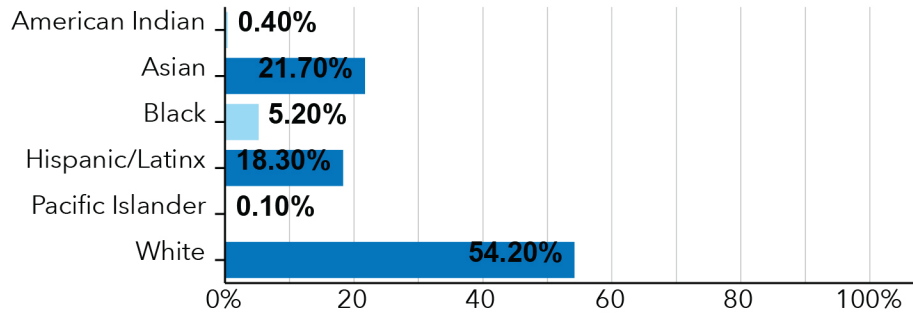
**33**

Total Crime Index  
(Esri, 2022)  
(>100 = Above avg. risk  
compared to rest of US)

Read how US Census defines [poverty](#).

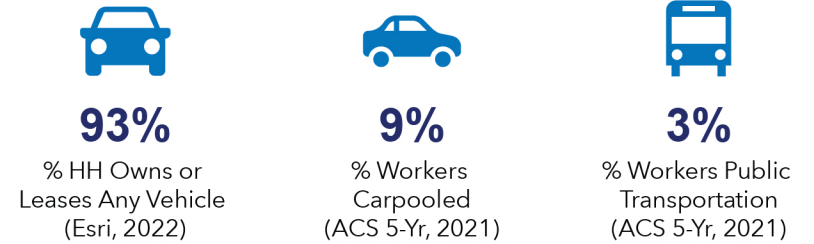
Click here to learn more about Esri's [Diversity Index](#) and [Crime Index](#).

## POPULATION BY RACE/ETHNICITY

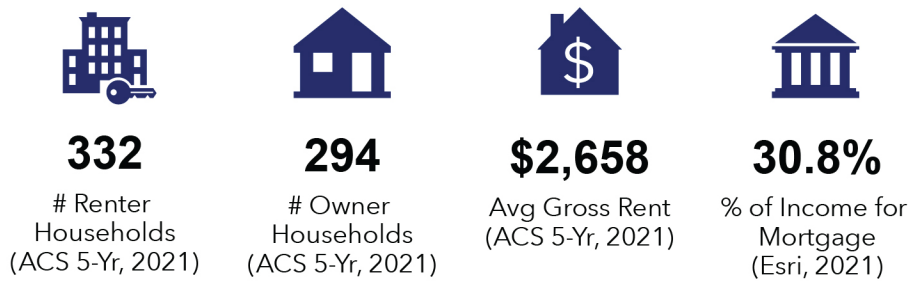


Source: LA County eGIS/Urban Research, 2021 estimates

## TRANSPORTATION



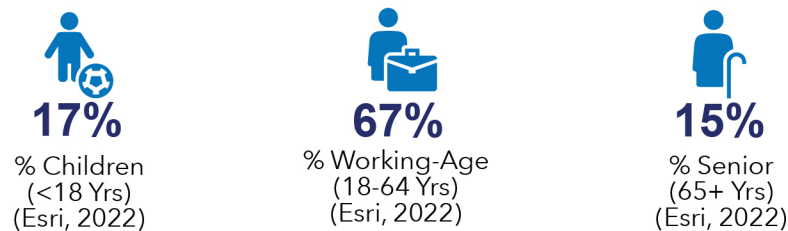
## HOUSING



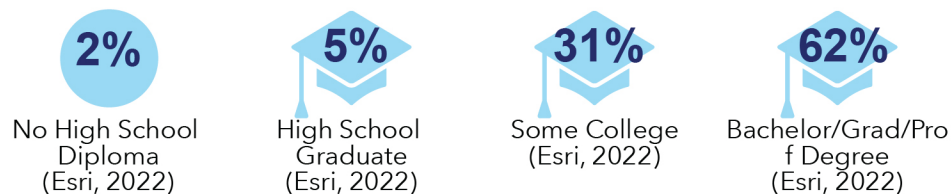
## POPULATION AND BUSINESSES



## AGE



## EDUCATIONAL ATTAINMENT (Age 25+)



## EMPLOYMENT BY SECTOR

(Esri, 2022)

