

CHANGE OF PRECISE PLAN

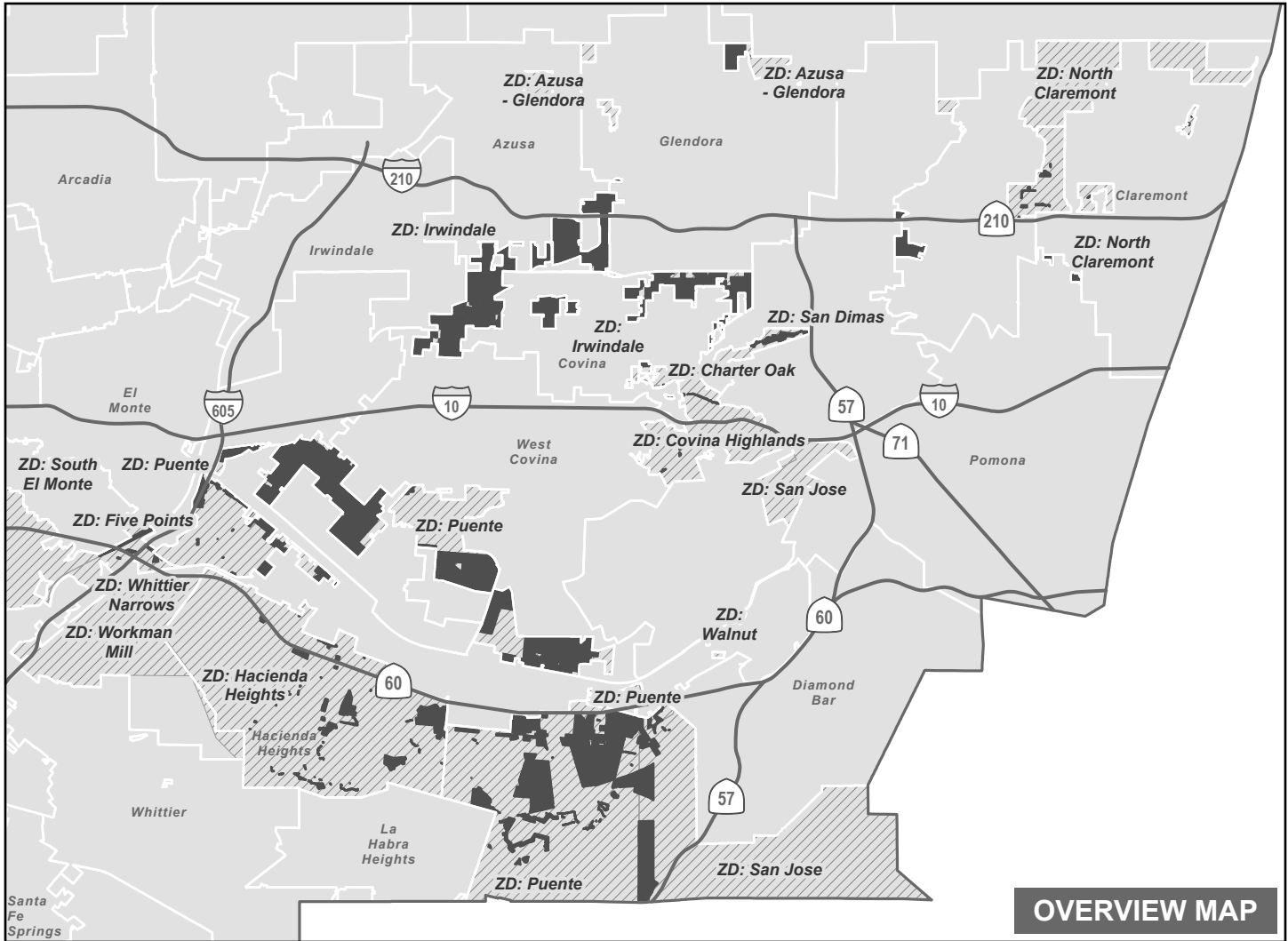
ZONED DISTRICTS: AZUSA - GLENDORA, CHARTER OAK, COVINA HIGHLANDS, FIVE POINTS, HACIENDA HEIGHTS, IRWINDALE, NORTH CLAREMONT, PUENTE, SAN DIMAS, SAN JOSE, SOUTH EL MONTE, WALNUT, WHITTIER NARROWS, WORKMAN MILL

ADOPTED BY ORDINANCE: _____

ON: _____

ZONING CASE: RPPL2022003557

AMENDING SECTION: 22.06.060 OF THE COUNTY CODE



— Freeway



Selected Zoned District (ZD)



Zone Change Area



City / Unincorporated Boundary



0 1.5 3



Miles

THE REGIONAL PLANNING COMMISSION
COUNTY OF LOS ANGELES
MICHAEL R. HASTINGS, CHAIR
AMY J. BODEK, AICP, DIRECTOR OF REGIONAL PLANNING