

**Chiquita Canyon Landfill  
Independent Monitor  
Quarterly Site Monitoring Status Report  
July 1, 2022 through September 30, 2022**

*Prepared For:*

**County of Los Angeles Department of Regional Planning**



*Prepared By:*



16431 Scientific Way  
Irvine, California 92618

*Prepared On:*

October 7, 2022

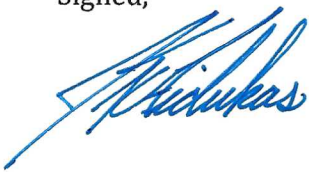
### **Certification Statement**

October 7, 2022

The attached Quarterly Site Monitoring Status Report for the Chiquita Canyon Landfill dated October 7, 2022 is the Third Quarterly Report for 2022, issued by UltraSystems. This report covers the monitoring period from July 1, 2022 through September 30, 2022 and is prepared for the County of Los Angeles Department of Regional Planning.

I, James T. Aidukas, Project Manager for the Mitigation Monitoring Services of the Chiquita Canyon Landfill, certify that the statements in the Quarterly Report and the referenced monthly reports reflect the site conditions observed and compliance status noted by me and other qualified experts during the stated site visits.

Signed,



James T. Aidukas

Project Manager

## Contents

Quarterly Status Report.....	1
Site Visits During the Quarter.....	1
Definition of Terms.....	1
Acronyms and Abbreviations.....	2
Status Summary.....	3
Action Plan.....	9
Conclusion.....	9

## Appendices

Appendix I	Photo Location Map and Site Monitoring Photos
Appendix II	Quarterly Site Visit Attendees by Date and Mitigation Monitoring Site Reports
Appendix III	Chiquita Canyon Landfill – Monitoring Conditions

## Quarterly Status Report

This Quarterly Status Report is a compilation of the period's monthly Site Monitoring. After each site visit, the UltraSystems monitors who went to the Chiquita Canyon Landfill site each wrote a Site Visit Report. Any issues that required immediate attention were reported to Waste Connections staff and the appropriate staff at the County of Los Angeles Department of Regional Planning, the County of Los Angeles Department of Public Works and the Los Angeles County Local Enforcement Agency (LEA).

Site visits during the 3rd Quarter followed the CDC guidelines for COVID-19 health protocols and complied with state and County restrictions. The landfill visits occurred on one day each month during the July, August and September 2022 period.

All UltraSystems monitors were in separate vehicles to observe and take photos of the landfill area and operations. There was limited contact with landfill staff. Any contact with staff observed social distancing, and the wearing of protective face coverings when in close proximity. There were no indoor gatherings.

The project team specialists reviewed the site photos and site visit reports remotely in the UltraSystems offices and developed a list of discussion items to review with landfill management. A monitoring conference call with landfill management provided answers and the status of the discussion items. This call was then transcribed, which concluded the monitoring activity.

This Quarterly Report provides the County of Los Angeles Department of Regional Planning with a concise status of the Mitigation Measure Monitoring for the period of July 1, 2022 to September 30, 2022. It includes:

1. A Status Summary of Compliant, Pending Review, Further Review Needed, and Non-Compliant with the requirements of the conditions and/or mitigation measures;
2. Photo Location Map and Site Monitoring Photos showing site conditions of key areas of the landfill during this quarter;
3. Site visit attendees by date of site visit and their site reports; and
4. Site Monitoring Conference Call Discussion Items and Site Monitoring call transcripts.

## Site Visits During the Quarter

Three site visits were performed by UltraSystems during the July 1, 2022 to September 30, 2022 period in order to observe operational site activities. They were performed on July 21, 2022; August 23, 2022; and September 13, 2022.

## Definition of Terms

Compliant is defined as complying with the County conditions and/or mitigation measures.

Pending Review is defined as UltraSystems not yet having obtained nor reviewed any necessary landfill documents to assess that a program, plan, or testing satisfies the condition.

Further Review Needed is defined as implementing plans (agency-approved, if required) to fully comply with a condition and/or mitigation measure. Some plans, especially vegetation, require an extended time frame, and immediate compliance is not possible.

Non-Compliant is defined as not complying with the County conditions and/or mitigation measures.

## Acronyms and Abbreviations

ADC	Alternative Daily Cover
BMPs	Best Management Practices
CAC	Community Action Committee
Cal-IPC	California Invasive Plant Council
CalRecycle	State of California Department of Resources Recycling and Recovery
Caltrans	State of California Department of Transportation
CARB	California Air Resources Board
CCL	Chiquita Canyon Landfill
CCR	California Code of Regulations
CDFW	California Department of Fish and Wildlife
CEO	Los Angeles County Chief Executive Office
CIP	Capital Improvement Plan
County	Los Angeles County
CPI	Consumer Price Index
CRMP	Cultural Resources Monitoring Plan
CRWQCB	California Regional Water Quality Control Board
CUP	Conditional Use Permit
CWA	Clean Water Act
DPH	Los Angeles County Department of Public Health
EIR	Environmental Impact Report
EPA	United States Environmental Protection Agency
GHG	Greenhouse Gas
IMP	Implementation and Monitoring Program
LACDPW	Los Angeles County Department of Public Works
LACDRP	Los Angeles County Department of Regional Planning
LEA	Los Angeles County Local Enforcement Agency
LFG	Landfill Gas
LFGTE	Landfill Gas-to-Energy Plant
MMRP	Mitigation Monitoring and Reporting Program
MPH	Miles per Hour
MRF	Materials Recovery Facility
NOD	Notice of Determination
NOV	Notice of Violation
OIMP	Odor Impact Minimization Plan
ORM	Odor Reduction Measure
OTP	Oak Tree Permit
RWQCB	Regional Water Quality Control Board
SCAQMD	Southern California Air Quality Management District
SOC	Statement of Overriding Considerations

SWFP	Solid Waste Facilities Permit issued by CalRecycle
SWMP	Solid Waste Management Program
TAC	Technical Advisory Committee
TPY	Tons per Year
USACE	United States Army Corps of Engineers
USFWS	United States Fish and Wildlife Service

## Status Summary

This section summarizes the status of UltraSystems' independent monitoring of County conditions and/or mitigation measures that are set forth in Appendix III, and County-approved plans, programs, or testing.

### Compliant with Conditions

- (CUP 22)** A graffiti-deterrent program has been approved by LACDPW and maintained by Waste Connections. No graffiti was observed on the exterior wall or within the landfill facility during the 3rd Quarter of 2022. In June, the Chiquito Canyon Road new traffic control equipment cement block wall and the road bridge structure west of this equipment was graffitied. It is recommended that Caltrans and the County local road department for this area remove the graffiti and monitor this area for reoccurrence. There was no removal of the graffiti in the 3rd Quarter.
- (CUP 23)** The amount of waste received is within the maximum tonnage allowed.
- (CUP 37)** One year before the 5th anniversary of the effective date of this grant, a permit requirement compliance study, which details the status of the permittee's compliance, shall be initiated by the permittee. This study was prepared by Waste Connection and submitted to the County of Los Angeles Department of Regional Planning.
- (CUP 40)** The facility is in compliance with the allowed operating hours.
- (CUP 43)** The facility is compliant with not using the listed prohibited material as an alternative waste cover. The facility obtained approval from CalRecycle and RWQCB to use shredded rubber tire chips for the drainage media in the buried horizontal gas collection system in lieu of crushed rock. This allows for better gas and liquids flow in the collection system. This is also compliant with County diversion efforts.
- (CUP 46)** Diversion and Public Awareness and Education Programs have been approved. The monitor has observed onsite compliance with diversion. This includes electronic waste and white goods consolidation and division; separation and grinding of concrete and asphalt for road construction and wet weather decking; and the use of alternative daily cover to minimize the use of soil cover. The programs are publicized through periodically-distributed flyers, Chiquita Canyon Landfill's website postings, and their quarterly published newsletters.
- (CUP 48)** Prohibited waste was not observed being accepted, processed, or disposed of at the landfill.

- (CUP 49)** Waste Connections sends email notices concerning prohibited waste to managers of waste-hauling companies and individual haulers. These email notices provide information on what waste is accepted and prohibited. The site keeps records of the recipients.
- (CUP 55)** Appropriate surface water control systems have been installed and maintained at the landfill site to divert and control surface water impacts. The design and construction plans and engineering calculations are approved by RWQCB and LACDPW. Removal of sediment and other maintenance of the basins starts on September 1 and are completed prior to October 1. This late maintenance start is due to California Fish and Wildlife environmental restrictions. Removal of sediment and brush in drainage channels starts in late May and is completed prior to October 1. Windblown litter is picked up as soon as possible to keep the landfill surface and the water control systems free of litter.
- (CUP 56)** All development structures and required activities are reviewed and approved by County Public Works and permits issued, when required.
- (CUP 57)** Landfill liner and leachate collection systems have been installed and approved by RWQCB before waste was placed. Gabion structures are being installed on the Cell's bottom liner to enhance landfill gas and liquids recovery.
- (CUP 59)** Currently, there is no recycled water available for use at the landfill facility.
- (CUP 66)** Flares were observed and operating during site monitoring. No abnormal conditions were observed. Installation of a new landfill gas flare is now scheduled to start in 2023. This will increase the amount of gas that could be flared and replace an older flare with a new, slightly lower NO<sub>x</sub> emissions flare.
- (CUP 67)** Waste Connections has installed a permanent backup generator for use during power outages and it is load-tested quarterly. The generator has been permanently connected to the site's electrical system.
- (CUP 71)** Waste Connections has certification documents that show their vehicles being in compliance with CARB.
- (CUP 73)** A Fugitive Dust Control Program is being implemented at the landfill. Only localized dust from truck traffic was observed on the unpaved roads. Occasional dust was observed coming from transfer trucks tipping dusty loads. No dust was observed leaving the site during site monitoring visits. FivePoint tilled their land immediately east of Chiquito Canyon Road in the 2nd Quarter to remove dry vegetation. This was causing large dust clouds when it was tilled. These tilled areas may cause a problem for the Val Verde neighborhood when high winds occur.
- (CUP 75, 76)** There was no queuing of trucks at the entrance that extended past the main gate.
- (CUP 84)** A Track-Out Preventive and Minimization Plan is being implemented at the landfill. Paved roads were observed to be clean during site monitoring. Rumble steel plates were being used at junction points from dirt roads and working areas onto paved roads. The realigned main access road that was reconstructed with compacted engineering fill and

covered with crushed concrete and asphalt in the 2nd Quarter was paved in September. This road is temporary until the new Wolcott Way road is constructed.

**(CUP 82, 85, 86 and 87)**

A Vehicle Tarping, Litter Control and Litter Recovery Program is being implemented at the landfill. During onsite monitoring days, litter was seen on slopes onsite after high wind occurrences. Litter was being recovered by hand. Litter from landfill operations was not observed offsite except for minor amounts of litter on the very top five-to-ten feet of the western landfill ridgeline. This litter blew around and over the secondary ridgeline litter fences.

**(CUP 97)** The site had an old underground fuel storage tank located in the future Cell 8 area. This tank has been removed for Cell 8 development. CCL stated that County permits for the removal were obtained. There are currently no underground fuel storage tanks.

**(CUP 107)** A Work Plan for Seismic Monitoring is being implemented at the landfill. The location of the equipment and site monitoring frequency has not been verified.

**(CUP 127)** The site is compliant with the sign posting requirements.

**(CUP 128)** The site is compliant with the hotline requirements.

**Pending Review**

**(CUP 26)** The landfill facilities have been relocated to temporary locations to allow for the reconstruction of the current paved access road, the construction of the final toe berm, and construction of Cell 8. Cell 8 was split into a Cell 8A and Cell 8B construction project due to the lack of obtaining all the permits for the Wolcott Way facilities. A revised site plan should be submitted to and approved by LACDPW and LACDRP.

**(CUP 52)** Surface water monitoring data was not reviewed.

**(CUP 64)** The current amount of landfill gas being recovered averages approximately 9000 SCFM. The gas-to-energy plant burns approximately 3500 SCFM (approximately 40% of the total gas recovered) and 5000 SCFM is currently being flared. Waste Connections is working with gas treatment and sales experts to install a facility to treat the landfill gas now being flared (and future gas increases), and produce and sell it as high-BTU gas.

**(CUP 68)** The air quality monitor consultant had installed all but one air quality monitoring stations outside the landfill property boundary. This last station is going through the permitting process. The method for analyzing and interpreting the data collected and the setting of thresholds has not been released by the consultant.

**(CUP 69)** SCAQMD issued a modified Stipulated Order for Abatement on March 13, 2021 for odor nuisance violations. The landfill is in compliance with this order. The end date of this order is not known.



**(CUP 74)** An Odor Impact Minimization Plan is being implemented at the landfill. Odors were not detected by the monitor in the immediate residential areas or at any other areas outside of the landfill perimeter during monitoring visits.

**(CUP 75, 76)** The program to reduce unnecessary truck trips and minimize queuing was not reviewed.

**(CUP 95)** The program to identify and conserve all significant archeological and paleontological material found onsite was not reviewed.

**(CUP 134, 135, 136, 137, 138)** Oak tree mitigation documents were not reviewed.

### **Further Review Needed**

**(CUP 1, 27 and 124)** The Chiquita Canyon Landfill received County approval with conditions to proceed with Option 2 in their letter of November 30, 2018 in order to comply with CUP Conditions Nos. 27 and 124 concerning the construction and operation of a household hazardous waste facility. An onsite household hazardous waste facility will not be constructed until the new entrance roadway realignment and scalehouse construction are completed. The start of construction of the Wolcott Way new facilities has been delayed due to permits not being obtained. Specifics on the status of permitting and construction schedules are given in CUP 77, below. The start of construction of a household waste facility cannot be estimated at this time. The facility's design and construction plans were not prepared and submitted for review and approval. Condition 124 was also being challenged by Waste Connections. The status of that challenge is unknown at this time.

**(CUP 1, 28)** There is no organic waste composting facility currently onsite. The final certified EIR proposed a facility in the Wolcott Way site plan area. The feasibility of constructing and operating a composting facility has not been provided by Waste Connections. Currently, there are no plans for Waste Connections to construct and operate an organic waste composting facility.

**(CUP 29)** The current waste fill height and liner footprint are within the approved CUP limits for the operating landfill. The closed primary canyon landfill top deck has been used for stockpiling of soil from cell construction and cell construction liner materials. Verification of compliance with height and other permit conditions that limit use of this closed landfill has not been investigated by the monitor. The stockpiled soil on the top deck of the closed landfill is being used for the landfill daily cover. A significant amount of the stockpile was utilized during the prior report period. The Cell 8 liner clay, synthetic fabric and HDPE liner, and screened cushion soil is being stored on the top deck. Soil from the construction of Cell 8 is also being stockpiled on this top deck. The ability to use this closed landfill area for these operation activities needs to be verified.

**(CUP 41)** A general "One-Year Plan Map" plan in lieu of fill sequence plans have been developed and used at the site. Fill plans for landfill cells have been developed, numbered and presented in the annual reports. They are referred to as "phasing limits." Each cell is numbered. The filling sequence does not follow a numerical order. A written explanation

of when each numbered cell is scheduled to be filled and what cell will be the next to be developed and filled should be developed by Waste Connections and presented to the agencies.

- (CUP 47)** Higher tipping rates for partial loads is accomplished by a minimum load charge of one ton. LACDPW has not issued a letter of compliance with the condition using a minimum load charge.
- (CUP 51)** The only grading outside of the approved fill limits were observed in the southwest area of Cell 8 development. Fill limits, as noted on environmental and landfill cell liner limit drawings, include disturbance and excavation/earthfill outside of the liner limits for geological reasons. Approval by LACDPW was given because grading was required to address hillside stability by removing the previously identified landslide to stabilize the Cell 8 area.
- (CUP 55)** During the LACDPW review of construction plans for Cell 8 and the final toe berm, the size and construction of the final catch basin and terminal basin were an issue that require supplying engineering calculation and design support for the current basins. The issues are still under review by LACDPW permitting division.
- (CUP 63)** During site monitoring visits, the monitor did not detect any odor or see any dust from the landfill operations that left the site. There were only localized odors normally detected that were from newly disposed waste. This occurred when you were within 300 feet of the operating area. Orchard fans were normally seen operating. A non-scented odor neutralizer foam was being sprayed on transfer truck loads that were potentially odorous to control odors at the working face. In the 3rd Quarter, a misting system was operating on the ridge above Cell 6. The mist water had included a non-scented odor neutralizer. Localized odors were also being controlled at the northwest perimeter slopes. Throughout the 3rd Quarter, the monitor did not detect odors in the Val Verde neighborhood in the mid-morning timeframe on site visit days. Localized dust occurred in July and August of the 3rd Quarter on the realigned main access roads to the active fill area and tipping of dusty loads. The realigned main access road was paved in September. When dust was generated by the operations, it was localized and did not leave the landfill perimeter.

## **Non-Compliant**

**(CUP 77)** There was no construction activity at the Wolcott Way future facilities site. These facilities improvements are still in the permitting phase. The CUP required these improvements to be completed within one year of the effective date of the CUP.

There was no substantial progress made in the 3rd Quarter in obtaining the permits to construct the required Wolcott Way improvements. The delay in permit issuance is affecting the cell development of Cell 8B.

The current status is:

Caltrans improvements and County road improvements: Final design of road improvements are still lacking agreement by the agencies, FivePoint and Waste Connections. Once finalized, permitting will follow. Road improvements' permitting may not be approved until mid-2023.

Edison Pole Replacements: In the last quarter, the Edison power poles were relocated with the new poles located in an area which will allow for the future facilities to be constructed.

Site grading and soil facilities development: There has been very little progress in obtaining resolution of outstanding development issues with all of the agencies, FivePoint and Waste Connections. Permitting for the Wolcott facility may not be issued until late 2023.

California Department of Fish and Wildlife permits have been issued for the Wolcott Way improvements, except for the new sediment and spadefoot toad basins. The building permits for the two basins were not yet approved by Fish and Wildlife pending review of basin design details.

## **(CUP 68, 77, 79, and 113)**

The County Department of Regional Planning issued a Notice of Violation on June 11, 2020 to Waste Connections for a lack of progress in complying with these conditions. The resolution of this violation is not known by the monitor.

## Action Plan

### **Compliant with Conditions**

These conditions will continue to be monitored for compliance on future site visits.

### **Pending Review**

The monitor will schedule a site monitoring conference call to solely obtain and review documents and have site staff describe procedures being used to assure compliance with these conditions.

### **Further Review Needed**

The monitor will investigate and obtain necessary information and data, as well as observe site conditions on future visits to determine status of compliance of the CUP conditions noted.

### **Non-Compliant**

During the monitoring period, non-compliant with CUP conditions were noted. All of these were related to the timely implementation of construction of the new entrance, Caltrans improvements, and new facilities at the Wolcott Way site. Permitting issues remain a problem. SCAQMD adopted a modified Stipulated Order of Abatement dated March 13, 2021 to control offsite landfill odors. A mitigation plan is being implemented.

## Conclusion

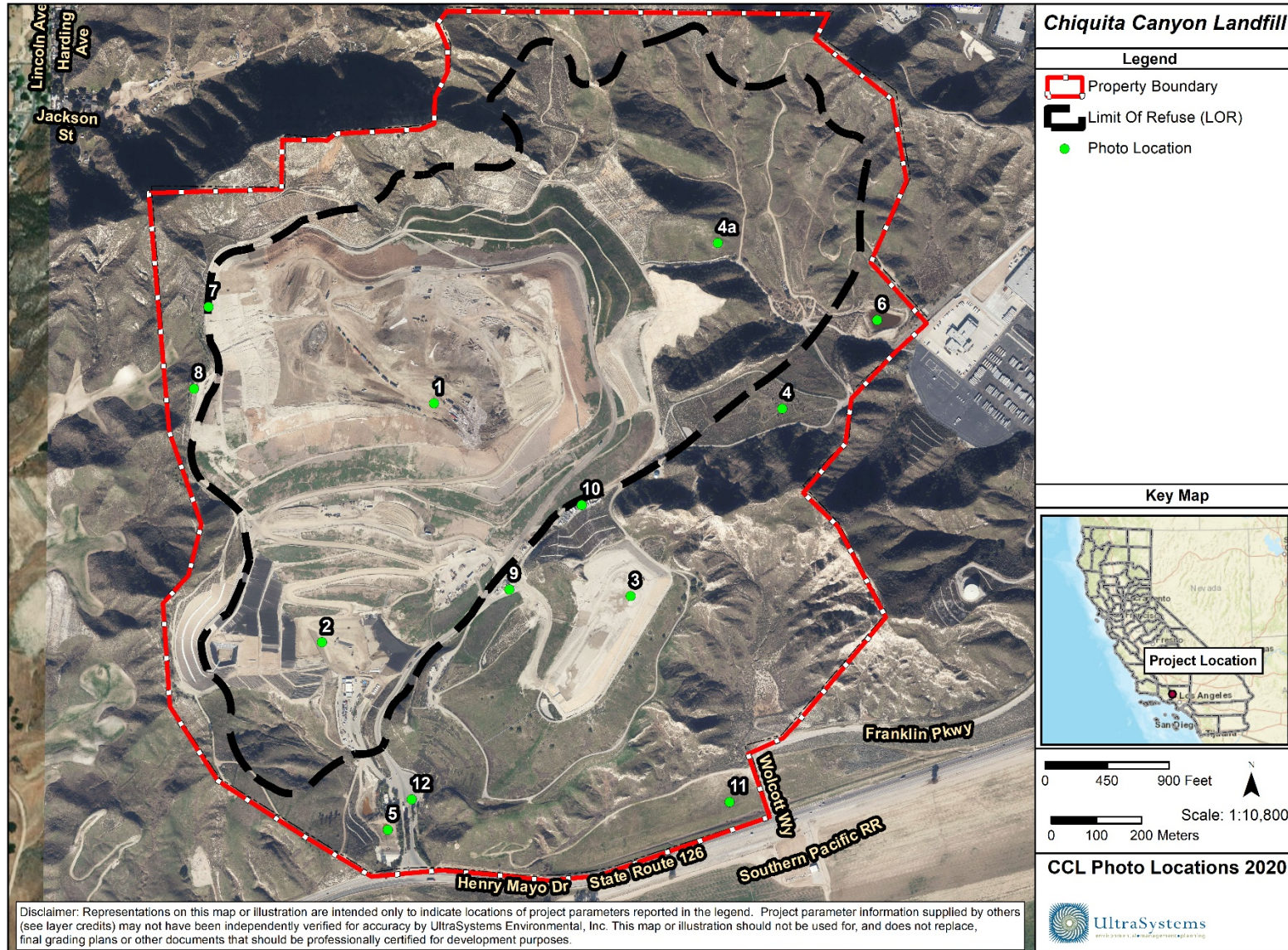
In this reporting period, UltraSystems has monitored the conditions and/or mitigation measures for the County, as shown above in the Status Summary.

The landfill is actively working toward being fully compliant with conditions and/or mitigation measures, with no landfill operations non-compliant conditions observed during site visits, except for lack of having progress with meeting CUP conditions for required site improvements and construction of auxiliary facilities.

# Appendix I

## Relevant Site Photos

---



September 16, 2020

## Photo Location Map Key

<b>Map Location</b>	<b>Title</b>	<b>Photo Number</b>
1	Top Deck Working Area	1 - 23
2	Cell 6 Working Area	24 - 95
3	Closed Landfill - Primary Canyon	96 - 127
4	Closed Landfill - Canyon B	128 - 138
4a	Future Cells 7, 9 and 10	139 - 156
5	South Terminal and Catch Basins	157 - 183
6	Northeast Sediment Basin	184 - 199
7	Landfill Perimeter Drainage Channel	200 - 227
8	Westside Perimeter Ridge	228 - 244
9	Flare 100 and Flare 150	245 - 261
10	Gas-to-Energy Facility	262 - 266
11	Wolcott Way Entrance Facilities	267 - 283
12	Maintenance and Admin Buildings	284
-	Site, Observe Litter Offsite, Cell 8 Construction	285 - 435



**Photo 1: Top Deck Working Area: July 21, 2022**



**Photo 2: Top Deck Working Area: July 21, 2022**



**Photo 3: Top Deck Working Area: July 21, 2022**



**Photo 4: Top Deck Working Area: July 21, 2022**





**Photo 5: Top Deck Working Area: July 21, 2022**



**Photo 6: Top Deck Working Area: July 21, 2022**



**Photo 7: Top Deck Working Area: August 23, 2022**



**Photo 8: Top Deck Working Area: August 23, 2022**



**Photo 9: Top Deck Working Area: August 23, 2022**



**Photo 10: Top Deck Working Area: August 23, 2022**



**Photo 11: Top Deck Working Area: August 23, 2022**



**Photo 12: Top Deck Working Area: August 23, 2022**



**Photo 13: Top Deck Working Area: August 23, 2022**



**Photo 14: Top Deck Working Area: August 23, 2022**



**Photo 15: Top Deck Working Area: August 23, 2022**



**Photo 16: Top Deck Working Area: August 23, 2022**



**Photo 17: Top Deck Working Area: August 23, 2022**



**Photo 18: Top Deck Working Area: August 23, 2022**



**Photo 19: Top Deck Working Area: August 23, 2022**



**Photo 20: Top Deck Working Area: August 23, 2022**



**Photo 21: Top Deck Working Area: August 23, 2022**



**Photo 22: Top Deck Working Area: August 23, 2022**



**Photo 23: Top Deck Working Area: September 13, 2022**



**Photo 24: Cell 6 Working Area: July 21, 2022**



**Photo 25: Cell 6 Working Area: July 21, 2022**



**Photo 26: Cell 6 Working Area: July 21, 2022**



**Photo 27: Cell 6 Working Area: July 21, 2022**



**Photo 28: Cell 6 Working Area: July 21, 2022**



**Photo 29: Cell 6 Working Area: July 21, 2022**



**Photo 30: Cell 6 Working Area: July 21, 2022**



**Photo 31: Cell 6 Working Area: July 21, 2022**



**Photo 32: Cell 6 Working Area: July 21, 2022**



**Photo 33: Cell 6 Working Area: July 21, 2022**



**Photo 34: Cell 6 Working Area: July 21, 2022**



**Photo 35: Cell 6 Working Area: July 21, 2022**



**Photo 36: Cell 6 Working Area: July 21, 2022**





**Photo 37: Cell 6 Working Area: July 21, 2022**



**Photo 38: Cell 6 Working Area: July 21, 2022**



**Photo 39: Cell 6 Working Area: July 21, 2022**



**Photo 40: Cell 6 Working Area: July 21, 2022**



**Photo 41: Cell 6 Working Area: July 21, 2022**



**Photo 42: Cell 6 Working Area: July 21, 2022**



**Photo 43: Cell 6 Working Area: July 21, 2022**



**Photo 44: Cell 6 Working Area: July 21, 2022**



**Photo 45: Cell 6 Working Area: July 21, 2022**



**Photo 46: Cell 6 Working Area: July 21, 2022**



**Photo 47: Cell 6 Working Area: July 21, 2022**



**Photo 48: Cell 6 Working Area: July 21, 2022**



**Photo 49: Cell 6 Working Area: July 21, 2022**



**Photo 50: Cell 6 Working Area: August 23, 2022**



**Photo 51: Cell 6 Working Area: August 23, 2022**



**Photo 52: Cell 6 Working Area: August 23, 2022**



**Photo 53: Cell 6 Working Area: August 23, 2022**



**Photo 54: Cell 6 Working Area: August 23, 2022**



**Photo 55: Cell 6 Working Area: August 23, 2022**



**Photo 56: Cell 6 Working Area: August 23, 2022**



**Photo 57: Cell 6 Working Area: August 23, 2022**



**Photo 58: Cell 6 Working Area: August 23, 2022**



**Photo 59: Cell 6 Working Area: August 23, 2022**



**Photo 60: Cell 6 Working Area: August 23, 2022**



**Photo 61: Cell 6 Working Area: August 23, 2022**



**Photo 62: Cell 6 Working Area: August 23, 2022**



**Photo 63: Cell 6 Working Area: August 23, 2022**



**Photo 64: Cell 6 Working Area: August 23, 2022**



**Photo 65: Cell 6 Working Area: August 23, 2022**



**Photo 66: Cell 6 Working Area: August 23, 2022**



**Photo 67: Cell 6 Working Area: August 23, 2022**



**Photo 68: Cell 6 Working Area: August 23, 2022**





**Photo 69: Cell 6 Working Area: September 13, 2022**



**Photo 70: Cell 6 Working Area: September 13, 2022**



**Photo 71: Cell 6 Working Area: September 13, 2022**



**Photo 72: Cell 6 Working Area: September 13, 2022**



**Photo 73: Cell 6 Working Area: September 13, 2022**



**Photo 74: Cell 6 Working Area: September 13, 2022**



**Photo 75: Cell 6 Working Area: September 13, 2022**



**Photo 76: Cell 6 Working Area: September 13, 2022**



**Photo 77: Cell 6 Working Area: September 13, 2022**



**Photo 78: Cell 6 Working Area: September 13, 2022**



**Photo 79: Cell 6 Working Area: September 13, 2022**



**Photo 80: Cell 6 Working Area: September 13, 2022**



**Photo 81: Cell 6 Working Area: September 13, 2022**



**Photo 82: Cell 6 Working Area: September 13, 2022**



**Photo 83: Cell 6 Working Area: September 13, 2022**



**Photo 84: Cell 6 Working Area: September 13, 2022**



**Photo 85: Cell 6 Working Area: September 13, 2022**



**Photo 86: Cell 6 Working Area: September 13, 2022**



**Photo 87: Cell 6 Working Area: September 13, 2022**



**Photo 88: Cell 6 Working Area: September 13, 2022**



**Photo 89: Cell 6 Working Area: September 13, 2022**



**Photo 90: Cell 6 Working Area: September 13, 2022**



**Photo 91: Cell 6 Working Area: September 13, 2022**



**Photo 92: Cell 6 Working Area: September 13, 2022**



**Photo 93: Cell 6 Working Area: September 13, 2022**



**Photo 94: Cell 6 Working Area: September 13, 2022**



**Photo 95: Cell 6 Working Area: September 13, 2022**



**Photo 96: Closed Landfill - Primary Canyon: July 21, 2022**



**Photo 97: Closed Landfill - Primary Canyon: July 21, 2022**



**Photo 98: Closed Landfill - Primary Canyon: July 21, 2022**



**Photo 99: Closed Landfill - Primary Canyon: July 21, 2022**



**Photo 100: Closed Landfill - Primary Canyon: July 21, 2022**





**Photo 101: Closed Landfill - Primary Canyon: July 21, 2022**



**Photo 102: Closed Landfill - Primary Canyon: July 21, 2022**



**Photo 103: Closed Landfill - Primary Canyon: July 21, 2022**



**Photo 104: Closed Landfill - Primary Canyon: July 21, 2022**



**Photo 105: Closed Landfill - Primary Canyon: July 21, 2022**



**Photo 106: Closed Landfill - Primary Canyon: July 21, 2022**



**Photo 107: Closed Landfill - Primary Canyon: July 21, 2022**



**Photo 108: Closed Landfill - Primary Canyon: July 21, 2022**



**Photo 109: Closed Landfill - Primary Canyon: July 21, 2022**



**Photo 110: Closed Landfill - Primary Canyon: July 21, 2022**



**Photo 111: Closed Landfill - Primary Canyon: July 21, 2022**



**Photo 112: Closed Landfill - Primary Canyon: August 23, 2022**



**Photo 113: Closed Landfill - Primary Canyon: August 23, 2022**



**Photo 114: Closed Landfill - Primary Canyon: August 23, 2022**



**Photo 115: Closed Landfill - Primary Canyon: August 23, 2022**



**Photo 116: Closed Landfill - Primary Canyon: August 23, 2022**



**Photo 117: Closed Landfill - Primary Canyon: August 23, 2022**



**Photo 118: Closed Landfill - Primary Canyon: August 23, 2022**



**Photo 119: Closed Landfill - Primary Canyon: August 23, 2022**



**Photo 120: Closed Landfill - Primary Canyon: August 23, 2022**



**Photo 121: Closed Landfill - Primary Canyon: August 23, 2022**



**Photo 122: Closed Landfill - Primary Canyon: August 23, 2022**



**Photo 123: Closed Landfill - Primary Canyon: August 23, 2022**



**Photo 124: Closed Landfill - Primary Canyon: September 13, 2022**



**Photo 125: Closed Landfill - Primary Canyon: September 13, 2022**



**Photo 126: Closed Landfill - Primary Canyon: September 13, 2022**



**Photo 127: Closed Landfill - Primary Canyon: September 13, 2022**



**Photo 128: Closed Landfill - Canyon B: July 21, 2022**



**Photo 129: Closed Landfill - Canyon B: July 21, 2022**



**Photo 130: Closed Landfill - Canyon B: July 21, 2022**



**Photo 131: Closed Landfill - Canyon B: August 23, 2022**



**Photo 132: Closed Landfill - Canyon B: August 23, 2022**





**Photo 133: Closed Landfill - Canyon B: August 23, 2022**



**Photo 134: Closed Landfill - Canyon B: August 23, 2022**



**Photo 135: Closed Landfill - Canyon B: August 23, 2022**



**Photo 136: Closed Landfill - Canyon B: September 13, 2022**



**Photo 137: Closed Landfill - Canyon B: September 13, 2022**



**Photo 138: Closed Landfill - Canyon B: September 13, 2022**



**Photo 139: Future Cells 7, 9, and 10: July 21, 2022**



**Photo 140: Future Cells 7, 9, and 10: July 21, 2022**



**Photo 141: Future Cells 7, 9, and 10: July 21, 2022**



**Photo 142: Future Cells 7, 9, and 10: July 21, 2022**



**Photo 143: Future Cells 7, 9, and 10: July 21, 2022**



**Photo 144: Future Cells 7, 9, and 10: July 21, 2022**



**Photo 145: Future Cells 7, 9, and 10: August 23, 2022**



**Photo 146: Future Cells 7, 9, and 10: August 23, 2022**



**Photo 147: Future Cells 7, 9, and 10: September 13, 2022**



**Photo 148: Future Cells 7, 9, and 10: September 13, 2022**



**Photo 149: Future Cells 7, 9, and 10: September 13, 2022**



**Photo 150: Future Cells 7, 9, and 10: September 13, 2022**



**Photo 151: Future Cells 7, 9, and 10: September 13, 2022**



**Photo 152: Future Cells 7, 9, and 10: September 13, 2022**



**Photo 153: Future Cells 7, 9, and 10: September 13, 2022**



**Photo 154: Future Cells 7, 9, and 10: September 13, 2022**



**Photo 155: Future Cells 7, 9, and 10: September 13, 2022**



**Photo 156: Future Cells 7, 9, and 10: September 13, 2022**



**Photo 157: South Terminal and Catch Basins: July 21, 2022**



**Photo 158: South Terminal and Catch Basins: July 21, 2022**



**Photo 159: South Terminal and Catch Basins: July 21, 2022**



**Photo 160: South Terminal and Catch Basins: July 21, 2022**



**Photo 161: South Terminal and Catch Basins: July 21, 2022**



**Photo 162: South Terminal and Catch Basins: July 21, 2022**



**Photo 163: South Terminal and Catch Basins: August 23, 2022**



**Photo 164: South Terminal and Catch Basins: August 23, 2022**





**Photo 165: South Terminal and Catch Basins: August 23, 2022**



**Photo 166: South Terminal and Catch Basins: August 23, 2022**



**Photo 167: South Terminal and Catch Basins: August 23, 2022**



**Photo 168: South Terminal and Catch Basins: August 23, 2022**



**Photo 169: South Terminal and Catch Basins: August 23, 2022**



**Photo 170: South Terminal and Catch Basins: August 23, 2022**



**Photo 171: South Terminal and Catch Basins: August 23, 2022**



**Photo 172: South Terminal and Catch Basins: August 23, 2022**



**Photo 173: South Terminal and Catch Basins: September 13, 2022**



**Photo 174: South Terminal and Catch Basins: September 13, 2022**



**Photo 175: South Terminal and Catch Basins: September 13, 2022**



**Photo 176: South Terminal and Catch Basins: September 13, 2022**



**Photo 177: South Terminal and Catch Basins: September 13, 2022**



**Photo 178: South Terminal and Catch Basins: September 13, 2022**



**Photo 179: South Terminal and Catch Basins: September 13, 2022**



**Photo 180: South Terminal and Catch Basins: September 13, 2022**



**Photo 181: South Terminal and Catch Basins: September 13, 2022**



**Photo 182: South Terminal and Catch Basins: September 13, 2022**



**Photo 183: South Terminal and Catch Basins: September 13, 2022**



**Photo 184: Northeast Sediment Basin: July 21, 2022**



**Photo 185: Northeast Sediment Basin: July 21, 2022**



**Photo 186: Northeast Sediment Basin: July 21, 2022**



**Photo 187: Northeast Sediment Basin: July 21, 2022**



**Photo 188: Northeast Sediment Basin: July 21, 2022**



**Photo 189: Northeast Sediment Basin: August 23, 2022**



**Photo 190: Northeast Sediment Basin: August 23, 2022**



**Photo 191: Northeast Sediment Basin: August 23, 2022**



**Photo 192: Northeast Sediment Basin: August 23, 2022**



**Photo 193: Northeast Sediment Basin: August 23, 2022**



**Photo 194: Northeast Sediment Basin: September 13, 2022**



**Photo 195: Northeast Sediment Basin: September 13, 2022**



**Photo 196: Northeast Sediment Basin: September 13, 2022**





**Photo 197: Northeast Sediment Basin: September 13, 2022**



**Photo 198: Northeast Sediment Basin: September 13, 2022**



**Photo 199: Northeast Sediment Basin: September 13, 2022**



**Photo 200: Landfill Perimeter Drainage Channel: July 21, 2022**



**Photo 201: Landfill Perimeter Drainage Channel: July 21, 2022**



**Photo 202: Landfill Perimeter Drainage Channel: July 21, 2022**



**Photo 203: Landfill Perimeter Drainage Channel: July 21, 2022**



**Photo 204: Landfill Perimeter Drainage Channel: July 21, 2022**



**Photo 205: Landfill Perimeter Drainage Channel: July 21, 2022**



**Photo 206: Landfill Perimeter Drainage Channel: July 21, 2022**



**Photo 207: Landfill Perimeter Drainage Channel: July 21, 2022**



**Photo 208: Landfill Perimeter Drainage Channel: August 23, 2022**



**Photo 209: Landfill Perimeter Drainage Channel: August 23, 2022**



**Photo 210: Landfill Perimeter Drainage Channel: August 23, 2022**



**Photo 211: Landfill Perimeter Drainage Channel: August 23, 2022**



**Photo 212: Landfill Perimeter Drainage Channel: August 23, 2022**



**Photo 213: Landfill Perimeter Drainage Channel: August 23, 2022**



**Photo 214: Landfill Perimeter Drainage Channel: August 23, 2022**



**Photo 215: Landfill Perimeter Drainage Channel: August 23, 2022**



**Photo 216: Landfill Perimeter Drainage Channel: August 23, 2022**



**Photo 217: Landfill Perimeter Drainage Channel: August 23, 2022**



**Photo 218: Landfill Perimeter Drainage Channel: August 23, 2022**



**Photo 219: Landfill Perimeter Drainage Channel:  
September 13, 2022**



**Photo 220: Landfill Perimeter Drainage Channel:  
September 13, 2022**



**Photo 221: Landfill Perimeter Drainage Channel:  
September 13, 2022**



**Photo 222: Landfill Perimeter Drainage Channel:  
September 13, 2022**



**Photo 223: Landfill Perimeter Drainage Channel:  
September 13, 2022**



**Photo 224: Landfill Perimeter Drainage Channel:  
September 13, 2022**



**Photo 225: Landfill Perimeter Drainage Channel:  
September 13, 2022**



**Photo 226: Landfill Perimeter Drainage Channel:  
September 13, 2022**



**Photo 227: Landfill Perimeter Drainage Channel:  
September 13, 2022**



**Photo 228: Westside Perimeter Ridge: July 21, 2022**





**Photo 229: Westside Perimeter Ridge: July 21, 2022**



**Photo 230: Westside Perimeter Ridge: July 21, 2022**



**Photo 231: Westside Perimeter Ridge: July 21, 2022**



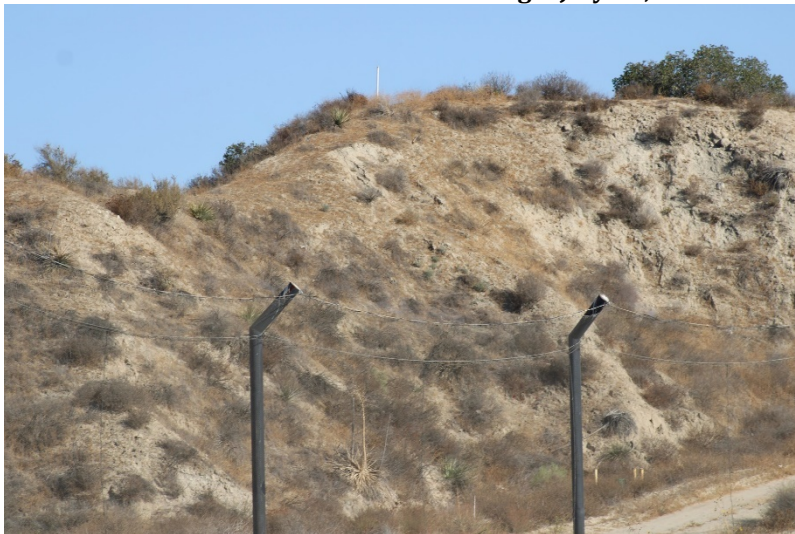
**Photo 232: Westside Perimeter Ridge: July 21, 2022**



**Photo 233: Westside Perimeter Ridge: July 21, 2022**



**Photo 234: Westside Perimeter Ridge: August 23, 2022**



**Photo 235: Westside Perimeter Ridge: August 23, 2022**



**Photo 236: Westside Perimeter Ridge: August 23, 2022**



**Photo 237: Westside Perimeter Ridge: August 23, 2022**



**Photo 238: Westside Perimeter Ridge: August 23, 2022**



**Photo 239: Westside Perimeter Ridge: August 23, 2022**



**Photo 240: Westside Perimeter Ridge: September 13, 2022**



**Photo 241: Westside Perimeter Ridge: September 13, 2022**



**Photo 242: Westside Perimeter Ridge: September 13, 2022**



**Photo 243: Westside Perimeter Ridge: September 13, 2022**



**Photo 244: Westside Perimeter Ridge: September 13, 2022**



Photo 245: Flare 100 and Flare 150: July 21, 2022



Photo 246: Flare 100 and Flare 150: July 21, 2022



Photo 247: Flare 100 and Flare 150: July 21, 2022



Photo 248: Flare 100 and Flare 150: July 21, 2022



**Photo 249: Flare 100 and Flare 150: July 21, 2022**



**Photo 250: Flare 100 and Flare 150: July 21, 2022**



**Photo 251: Flare 100 and Flare 150: August 23, 2022**



**Photo 252: Flare 100 and Flare 150: August 23, 2022**



Photo 253: Flare 100 and Flare 150: August 23, 2022



Photo 254: Flare 100 and Flare 150: August 23, 2022



Photo 255: Flare 100 and Flare 150: August 23, 2022



Photo 256: Flare 100 and Flare 150: September 13, 2022



Photo 257: Flare 100 and Flare 150: September 13, 2022



Photo 258: Flare 100 and Flare 150: September 13, 2022



Photo 259: Flare 100 and Flare 150: September 13, 2022



Photo 260: Flare 100 and Flare 150: September 13, 2022





**Photo 261: Flare 100 and Flare 150: September 13, 2022**



**Photo 262: Gas-to-Energy Facility: July 21, 2022**



**Photo 263: Gas-to-Energy Facility: July 21, 2022**



**Photo 264: Gas-to-Energy Facility: July 21, 2022**



**Photo 265: Gas-to-Energy Facility: September 13, 2022**



**Photo 266: Gas-to-Energy Facility: September 13, 2022**



**Photo 267: Wolcott Way Entrance Facilities: July 21, 2022**



**Photo 268: Wolcott Way Entrance Facilities: July 21, 2022**



**Photo 269: Wolcott Way Entrance Facilities: July 21, 2022**



**Photo 270: Wolcott Way Entrance Facilities: July 21, 2022**



**Photo 271: Wolcott Way Entrance Facilities: July 21, 2022**



**Photo 272: Wolcott Way Entrance Facilities: August 23, 2022**



**Photo 273: Wolcott Way Entrance Facilities: August 23, 2022**



**Photo 274: Wolcott Way Entrance Facilities: August 23, 2022**



**Photo 275: Wolcott Way Entrance Facilities: August 23, 2022**



**Photo 276: Wolcott Way Entrance Facilities: August 23, 2022**



**Photo 277: Wolcott Way Entrance Facilities: September 13, 2022**



**Photo 278: Wolcott Way Entrance Facilities: September 13, 2022**



**Photo 279: Wolcott Way Entrance Facilities: September 13, 2022**



**Photo 280: Wolcott Way Entrance Facilities: September 13, 2022**



**Photo 281: Wolcott Way Entrance Facilities: September 13, 2022**



**Photo 282: Wolcott Way Entrance Facilities: September 13, 2022**



**Photo 283: Wolcott Way Entrance Facilities: September 13, 2022**



**Photo 284: Maintenance and Admin Buildings: August 23, 2022**



Photo 285: Site: July 21, 2022



Photo 286: Site: July 21, 2022



Photo 287: Site: July 21, 2022



Photo 288: Site: July 21, 2022



**Photo 289: Site: July 21, 2022**



**Photo 290: Site: July 21, 2022**



**Photo 291: Site: July 21, 2022**



**Photo 292: Site: July 21, 2022**





**Photo 293: Site: July 21, 2022**



**Photo 294: Site: July 21, 2022**



**Photo 295: Site: July 21, 2022**



**Photo 296: Site: July 21, 2022**



**Photo 297: Site: July 21, 2022**



**Photo 298: Site: July 21, 2022**



**Photo 299: Site: July 21, 2022**



**Photo 300: Site: July 21, 2022**



**Photo 301: Site: July 21, 2022**



**Photo 302: Site: July 21, 2022**



**Photo 303: Site: July 21, 2022**



**Photo 304: Site: July 21, 2022**



**Photo 305: Site: July 21, 2022**



**Photo 306: Site: August 23, 2022**



**Photo 307: Site: August 23, 2022**



**Photo 308: Site: August 23, 2022**



**Photo 309: Site: August 23, 2022**



**Photo 310: Site: August 23, 2022**



**Photo 311: Site: August 23, 2022**



**Photo 312: Site: August 23, 2022**



Photo 313: Site: August 23, 2022



Photo 314: Site: August 23, 2022



Photo 315: Site: August 23, 2022



Photo 316: Site: August 23, 2022



Photo 317: Site: August 23, 2022



Photo 318: Site: August 23, 2022



Photo 319: Site: August 23, 2022



Photo 320: Site: August 23, 2022



**Photo 321: Site: August 23, 2022**



**Photo 322: Site: August 23, 2022**



**Photo 323: Site: August 23, 2022**



**Photo 324: Site: August 23, 2022**





Photo 325: Site: August 23, 2022



Photo 326: Site: September 13, 2022



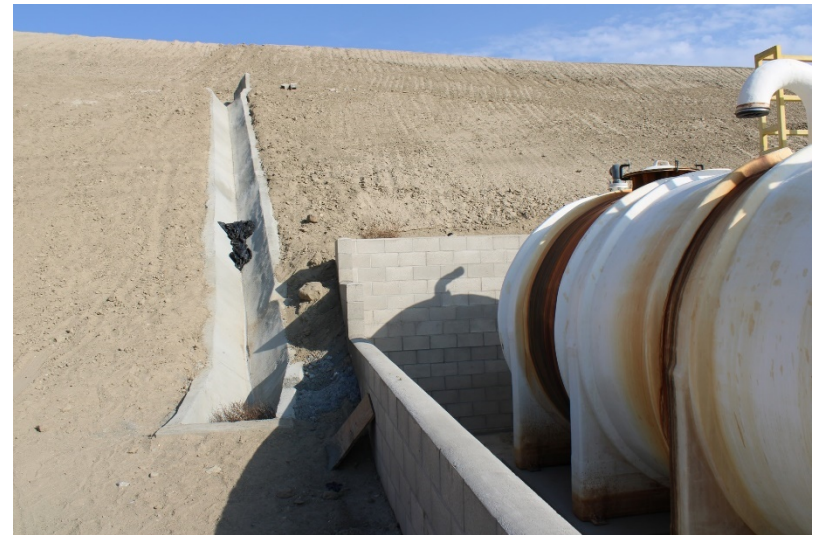
Photo 327: Site: September 13, 2022



Photo 328: Site: September 13, 2022



**Photo 329: Site: September 13, 2022**



**Photo 330: Site: September 13, 2022**



**Photo 331: Site: September 13, 2022**



**Photo 332: Site: September 13, 2022**



**Photo 333: Site: September 13, 2022**



**Photo 334: Site: September 13, 2022**



**Photo 335: Site: September 13, 2022**



**Photo 336: Site: September 13, 2022**



**Photo 337: Site: September 13, 2022**



**Photo 338: Site: September 13, 2022**



**Photo 339: Site: September 13, 2022**



**Photo 340: Site: September 13, 2022**



**Photo 341: Site: September 13, 2022**



**Photo 342: Site: September 13, 2022**



**Photo 343: Site: September 13, 2022**



**Photo 344: Site: September 13, 2022**



**Photo 345: Observe Litter Offsite: July 21, 2022**



**Photo 346: Observe Litter Offsite: July 21, 2022**



**Photo 347: Observe Litter Offsite: July 21, 2022**



**Photo 348: Observe Litter Offsite: July 21, 2022**



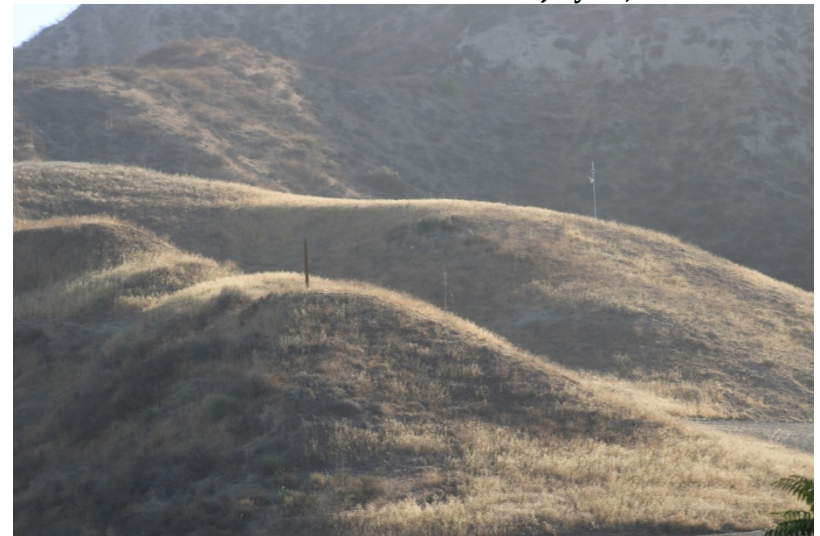
**Photo 349: Observe Litter Offsite: July 21, 2022**



**Photo 350: Observe Litter Offsite: July 21, 2022**



**Photo 351: Observe Litter Offsite: July 21, 2022**



**Photo 352: Observe Litter Offsite: July 21, 2022**



**Photo 353: Observe Litter Offsite: July 21, 2022**



**Photo 354: Observe Litter Offsite: July 21, 2022**



**Photo 355: Observe Litter Offsite: July 21, 2022**



**Photo 356: Observe Litter Offsite: July 21, 2022**





**Photo 357: Observe Litter Offsite: August 23, 2022**



**Photo 358: Observe Litter Offsite: August 23, 2022**



**Photo 359: Observe Litter Offsite: August 23, 2022**



**Photo 360: Observe Litter Offsite: August 23, 2022**



**Photo 361: Observe Litter Offsite: August 23, 2022**



**Photo 362: Observe Litter Offsite: August 23, 2022**



**Photo 363: Observe Litter Offsite: August 23, 2022**



**Photo 364: Observe Litter Offsite: August 23, 2022**



**Photo 365: Observe Litter Offsite: August 23, 2022**



**Photo 366: Observe Litter Offsite: August 23, 2022**



**Photo 367: Observe Litter Offsite: August 23, 2022**



**Photo 368: Observe Litter Offsite: August 23, 2022**



**Photo 369: Observe Litter Offsite: August 23, 2022**



**Photo 370: Observe Litter Offsite: September 13, 2022**



**Photo 371: Observe Litter Offsite: September 13, 2022**



**Photo 372: Observe Litter Offsite: September 13, 2022**



**Photo 373: Observe Litter Offsite: September 13, 2022**



**Photo 374: Observe Litter Offsite: September 13, 2022**



**Photo 375: Observe Litter Offsite: September 13, 2022**



**Photo 376: Observe Litter Offsite: September 13, 2022**



**Photo 377: Observe Litter Offsite: September 13, 2022**



**Photo 378: Observe Litter Offsite: September 13, 2022**



**Photo 379: Observe Litter Offsite: September 13, 2022**



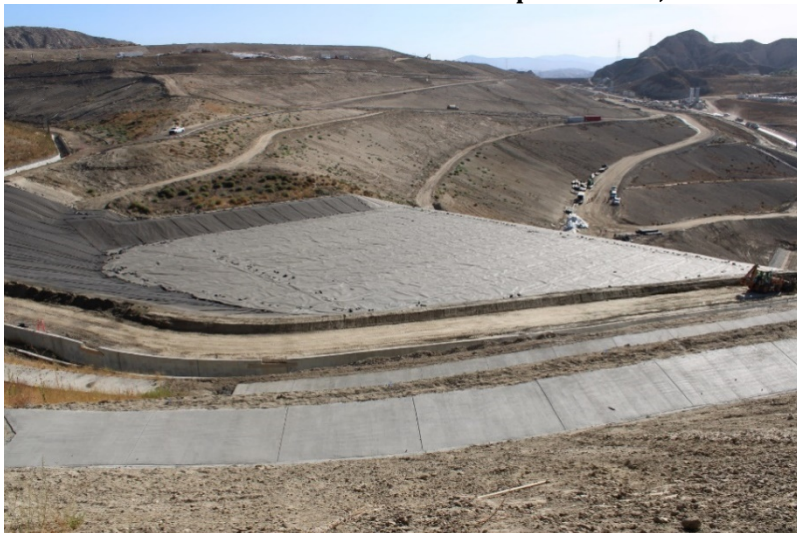
**Photo 380: Observe Litter Offsite: September 13, 2022**



**Photo 381: Observe Litter Offsite: September 13, 2022**



**Photo 382: Cell 8 Construction: July 21, 2022**



**Photo 383: Cell 8 Construction: July 21, 2022**



**Photo 384: Cell 8 Construction: July 21, 2022**



**Photo 385: Cell 8 Construction: July 21, 2022**



**Photo 386: Cell 8 Construction: July 21, 2022**



**Photo 387: Cell 8 Construction: July 21, 2022**



**Photo 388: Cell 8 Construction: July 21, 2022**





**Photo 389: Cell 8 Construction: July 21, 2022**



**Photo 390: Cell 8 Construction: July 21, 2022**



**Photo 391: Cell 8 Construction: July 21, 2022**



**Photo 392: Cell 8 Construction: July 21, 2022**



**Photo 393: Cell 8 Construction: July 21, 2022**



**Photo 394: Cell 8 Construction: July 21, 2022**



**Photo 395: Cell 8 Construction: July 21, 2022**



**Photo 396: Cell 8 Construction: July 21, 2022**



**Photo 397: Cell 8 Construction: July 21, 2022**



**Photo 398: Cell 8 Construction: July 21, 2022**



**Photo 399: Cell 8 Construction: July 21, 2022**



**Photo 400: Cell 8 Construction: July 21, 2022**



**Photo 401: Cell 8 Construction: July 21, 2022**



**Photo 402: Cell 8 Construction: July 21, 2022**



**Photo 403: Cell 8 Construction: July 21, 2022**



**Photo 404: Cell 8 Construction: July 21, 2022**



**Photo 405: Cell 8 Construction: August 23, 2022**



**Photo 406: Cell 8 Construction: August 23, 2022**



**Photo 407: Cell 8 Construction: August 23, 2022**



**Photo 408: Cell 8 Construction: August 23, 2022**



**Photo 409: Cell 8 Construction: August 23, 2022**



**Photo 410: Cell 8 Construction: August 23, 2022**



**Photo 411: Cell 8 Construction: August 23, 2022**



**Photo 412: Cell 8 Construction: August 23, 2022**



**Photo 413: Cell 8 Construction: August 23, 2022**



**Photo 414: Cell 8 Construction: August 23, 2022**



**Photo 415: Cell 8 Construction: August 23, 2022**



**Photo 416: Cell 8 Construction: August 23, 2022**



**Photo 417: Cell 8 Construction: August 23, 2022**



**Photo 418: Cell 8 Construction: August 23, 2022**



**Photo 419: Cell 8 Construction: August 23, 2022**



**Photo 420: Cell 8 Construction: August 23, 2022**





**Photo 421: Cell 8 Construction: August 23, 2022**



**Photo 422: Cell 8 Construction: August 23, 2022**



**Photo 423: Cell 8 Construction: September 13, 2022**



**Photo 424: Cell 8 Construction: September 13, 2022**



**Photo 425: Cell 8 Construction: September 13, 2022**



**Photo 426: Cell 8 Construction: September 13, 2022**



**Photo 427: Cell 8 Construction: September 13, 2022**



**Photo 428: Cell 8 Construction: September 13, 2022**



**Photo 429: Cell 8 Construction: September 13, 2022**



**Photo 430: Cell 8 Construction: September 13, 2022**



**Photo 431: Cell 8 Construction: September 13, 2022**



**Photo 432: Cell 8 Construction: September 13, 2022**



**Photo 433: Cell 8 Construction: September 13, 2022**



**Photo 434: Cell 8 Construction: September 13, 2022**



**Photo 435: Cell 8 Construction: September 13, 2022**

## **Appendix II**

# Quarterly Site Visits: Site Visit Attendees by Date of Site Visit/ Mitigation Monitoring Site Reports

---

## **Chiquita Canyon Landfill Site Monitoring Procedures for July, August and September 2022**

To follow the CDC guidelines for COVID-19 health protocols and to comply with State, County and City restrictions, UltraSystems is extending the monitoring of the landfill to occur on one day each month during July through September 2022; continue practicing physical distancing; and wearing a protective face covering.

UltraSystems will send a single engineer to perform a fact-finding visit in a single vehicle. The engineer will sign-in by phone with landfill staff when arriving on site. The engineer will start at the office parking and drive around the site, taking pictures of the current landfill conditions, construction activities, waste disposal, gas recovery and flaring. The engineer will not leave the immediate area of the vehicle or have personal contact with any landfill staff or waste disposal customers. Photo locations will include:

1. Current disposal and inactive areas
2. Onsite areas with windblown litter
3. Perimeter drainage system
4. Landfill slopes
5. Closed Canyon B and Primary Canyon landfills
6. Northeast sediment basin
7. Future cells 7, 9 and 10 areas
8. Cell 7 graded and soil stockpile areas
9. Gas-to-energy plant
10. Gas flares
11. Wolcott Way entrance facilities activities
12. Wolcott Way sediment basin and mitigation pond areas
13. Cell 8 development activities
14. South catch basin and terminal basin
15. Maintenance and administration areas
16. General site areas
17. Offsite general conditions

After performing the monitoring activities, the UltraSystems engineer will notify Waste Connections' staff that they are signing out and leaving the site.

All photos will be emailed to Waste Connections' staff, Los Angeles County Regional Planning and Los Angeles County Department of Public Works. A post-site visit monitoring conference call will follow after reviewing the photos and engineer's observation notes.

# July 2022

**CHIQUITA CANYON LANDFILL  
MITIGATION MONITORING SITE REPORT**

Monitor: James T. Aidukas	Page: 1 of 1
Discipline: Project Manager	Date: 7-21-2022
Site Conditions: 65°F, 0–10 mph winds	

**SITE LOG**

Drove the area around the site and the adjacent Val Verde neighborhood from 7:15 to 7:45 a.m. There were no landfill odors detected outside of the landfill perimeter. There was no landfill litter seen outside of the landfill limits, except for minimal litter adjacent to the western ridgeline secondary fence. There was no illegal dumping on Franklin Parkway or Chiquito Canyon Road. The Franklin Parkway air monitoring station was operating with no concerns noted. There was no construction activity occurring at the Wolcott Way future facilities area. The graffiti on the traffic signal equipment block wall and the road bridge structure off of Chiquito Canyon Road was still not removed. The signal lights on SR 126 at Chiquito Canyon Road were operational. Met with Mike Lindsay (UltraSystems), Edgar De La Torre and Ai-Viet Huynh (LACDRP), and Steve Cassulo (Waste Connections). We then proceeded to monitor the site in separate vehicles and observed the following:

- The liquids handling system's holding tank facility had the cement block secondary containment wall base being sealed and asphalt placed against the wall.
- The Cell 8A construction included an expansion to the existing catch basin.
- The Cell 8A development was observed from the western ridgeline. The liner system was being installed in the cell's floor and lower side areas. The perimeter access road (now dirt) was constructed above the final liner height.
- The box drainage channel extension and v-ditch downcomers were being constructed.
- The temporary realigned main access road was not paved. Localized dust was seen when transfer trucks used the road.
- The upper top deck of Cell 6 was active accepting waste. There were no odors leaving the immediate tipping area. A Morooka tank truck was spraying a white odor-neutralizing foam on areas where odorous waste was deposited.
- The FivePoint tilled area was observed. The dirt area was a large parcel.
- The westside drainage channel was being cleared of sediment, brush, and debris.
- The homeowner drop-off area was small and had no concerns noted.
- The amount of wet weather material being stockpiled on the top deck of Cell 5 has increased.
- Excavation has increased in the future Cell 7 area. Due to delays in Wolcott Way permitting, Cell 7 will be the next cell developed. Cell 8B will be delayed.
- The northeast sediment basin's water level has decreased due to evaporation. No toads were seen.
- The primary canyon's top deck was being used to stockpile Cell 8A soil, liner clay, cushion shifted soil and liner fabric and HDPE material
- One monitoring stations are being stored behind the administration office.

**FURTHER REVIEW NEEDED**

Signed:



**CHIQUITA CANYON LANDFILL  
MITIGATION MONITORING SITE REPORT**

Monitor: Mike Lindsay	Page: 1 of 2
Discipline: Environmental Engineer	Date: 07-21-2022 Thursday
Site Conditions: Partly Cloudy, 64–96 °F, NE 1–10 mph, 45% RH, 27 AQI	
<b>SITE LOG</b>	
<ol style="list-style-type: none"> <li>1. Monitor drove Chiquito Canyon Road and observed minimal wind-blown litter along slopes that are adjacent to the landfill’s perimeter fencing.</li> <li>2. New traffic signal lights are functioning at Chiquito Canyon Road and SR-126.</li> <li>3. Monitor drove through the Val Verde neighborhood; no odors are present at 7:35 am.</li> <li>4. Checked into office with Steve Cassulo and Nicole Ward (Waste Connections).</li> <li>5. Met with Jim Aidukas (UltraSystems), and Edgar De La Torre and Ai-Viet Huynh (LACDRP). We followed Steve Cassulo to site locations in separate vehicles.</li> <li>6. Water trucks are applying water throughout site for dust control.</li> <li>7. The new concrete pad for the leachate tanks has had its cinderblock walls coated with a sealant near the base.</li> <li>8. Observed excavation work at new sediment basin, which is directly adjacent to the existing catch basin behind the admin building.</li> <li>9. The air quality monitoring station above Cell 8 has been cleaned of road dust covering its solar panels.</li> <li>10. Observed the Cell 8 construction activities from the southwest ridge, including liner material installed and continued extension of the perimeter drainage channel.</li> <li>11. The mitigation oak trees are in good condition.</li> <li>12. The westside perimeter drainage channel is being cleared of sediment and trash.</li> <li>13. The westside perimeter ridge is in good order.</li> <li>14. Street sweepers are cleaning the haul roads.</li> <li>15. The homeowner drop-off area is in good order.</li> <li>16. Observed the working area at Cell 6 from the top deck, including three tippers at the east end of cell and moving floor trucks to the west, traffic controllers, orchard fans and water trucks to control dust and odors. ADC is 60% covered with new trash at 9:30 am.</li> <li>17. A Morooka tank truck is spraying white-colored odor-neutralizing foam onto fresh trash for odor control.</li> <li>18. Bird abatement is active.</li> <li>19. Observed the wet weather top deck, including additional crushed rock piled for the winter months.</li> <li>20. The truck wash station is in good order.</li> <li>21. Future Cell 7 area has excavation work present along northwest side of cell.</li> <li>22. The closed canyon B area is in good order, including condensate storage tank.</li> <li>23. The northeast sediment basin is in good order, with water level decreasing due to evaporation.</li> <li>24. The closed primary canyon top deck is in good order, with clay and liner material being stored at the northwest end. Stockpiled soil is still being used for daily cover material.</li> <li>25. The Wolcott Way entrance area is in good order, as viewed from high on the east perimeter ridge below primary canyon. No new construction activity was observed.</li> <li>26. The air quality monitoring station above the Wolcott Way project area is in good order.</li> <li>27. Flare 100 is operating at 2726 scfm, 1507 °F. Gas sample measured at 35 % Vol. CH<sub>4</sub>, 1.1 % Vol. O<sub>2</sub>, 37 ppm H<sub>2</sub>S and 260 ppm CO. Inlet temperature is at 115 °F.</li> </ol>	

- 28. Flare 150 is operating at 2642 scfm, 1567 °F. Inlet temperature is at 105 °F.
- 29. The breakroom area is in good order.
- 30. Traffic spotters are onsite to control traffic.
- 31. The scales are in good order, with no odors present.
- 32. The south terminal basin is almost dry, with mud at low-point.
- 33. One air quality monitoring station is being stored behind the admin facility, while permits for installation are pending approval.
- 34. Checked out of site with Nicole Ward.

FURTHER REVIEW NEEDED

Signed: *Michael W. Lindsay*

# August 2022

**CHIQUITA CANYON LANDFILL  
MITIGATION MONITORING SITE REPORT**

Monitor: James T. Aidukas	Page: 1 of 2
Discipline: Project Manager	Date: 8-23-2022

Site Conditions: 65–95°F, 0–10 mph winds

**SITE LOG**

Drove the area around the site and the adjacent Val Verde neighborhood from 7:00 to 7:50 a.m. There were no landfill odors detected outside of the landfill perimeter. There was no landfill litter seen outside of the landfill limits. There was no illegal dumping on Franklin Parkway or Chiquito Canyon Road. The Franklin Parkway air monitoring station was operating with no concerns noted. There was no construction activity occurring at the Wolcott Way future facilities area. The graffiti on the traffic signal equipment block wall and the road bridge structure off of Chiquito Canyon Road still was not removed. Met with Mike Lindsay (UltraSystems), Edgar De La Torre (LACDRP), and Nicole Ward (Waste Connections). We then proceeded to monitor the site in separate vehicles and observed the following:

- The area outside of the liquids handling facility wall was graded and asphalt was being placed. The access road to the westside ridgeline was graded. A drainage channel was being constructed to handle the Cell 8A slope rainwater runoff. The piping on the liquids handling facility's storage vessels was not yet installed. Baker tanks were being used to handle the liquids.
- The final grading of the catch basin was done.
- The Cell 8A HDPE liner was being placed on the floor and side slopes. Additional drainage channels and v-ditches downcomers were constructed since the last site visit.
- The upper portion of Cell 6 was active accepting waste. Orchard fans were operating. A Morooka tank truck was spraying a white foam odor neutralizer on fresh odorous waste. Fresh waste odors were being controlled to the active area.
- Localized dust was being generated from truck traffic on the realigned main dirt access road and the dirt road to the active waste area. Watering of the dirt roads did not eliminate all of the dust generation.
- The western box channel was being extended into the Cell 8A area. Construction soil was blocking part of the existing box channel.
- The western ridgeline had same wind-blown litter that was on the exterior hillside that blow around the secondary litter fence. This minor litter was too high on the steep slope to be removed. Other windblown litter was removed.
- The westside drainage channel around the landfill perimeter had soil and debris removed in all but one small area. Vegetation growing on the channel's concrete edge has not been removed.
- Additional concrete and asphalt debris was stockpiled on the Cell 5 top deck for wet weather use.
- Some of the landfill slopes were covered with mulch. Paper debris was not yet removed from the mulch.
- A small homeowner area was observed. A tarp was being used for cover of the prior day's waste. There were no odors being emitted and no concerns were noted.

Page 2 of 8-23-2022

- The northeast sediment basin had standing water. The water was not able to be pumped due to the presence of toads.
- Excavation work was being done in the northeast area of the future Cell 7. This area is having the site prepared to be the next disposal cell. Cell 8B is being delayed due to Wolcott Way permitting delays.
- The primary canyon top deck was being used for clay, liner, and cover soil stockpiling. Cell 8A construction soil was being stockpiled there and used for daily cover. Soil is also being sifted and stockpiled for use as cushion material for Cell 8A.
- The terminal basin was dry. Cleaning out sediment and any required improvements will be done after September 15.
- One monitoring station is being stored behind the administration office.

FURTHER REVIEW NEEDED

Signed:



**CHIQUITA CANYON LANDFILL  
MITIGATION MONITORING SITE REPORT**

Monitor: Mike Lindsay	Page: 1 of 2
Discipline: Environmental Engineer	Date: 08-23-2022 Tuesday
Site Conditions: Clear, 66–94 °F, NE 1–10 mph, 50% RH, 39 AQI	
SITE LOG	
<ol style="list-style-type: none"> <li>1. Checked into office with Nicole Ward (Waste Connections).</li> <li>2. Met with Jim Aidukas (UltraSystems), and Edgar De La Torre (LACDRP). We followed Nicole Ward to site locations in separate vehicles.</li> <li>3. Water trucks are applying water throughout site for dust control.</li> <li>4. The leachate holding tanks have been relocated to the new concrete pad and surrounding block containment wall. Plumbing connections are being made, and asphalt is being placed as block wall backfill. Temporary holding tanks are currently collecting leachate until the transition is complete.</li> <li>5. Street sweepers are cleaning the haul roads.</li> <li>6. The scales are in good order, with no odors present.</li> <li>7. Observed excavation work at new sediment basin, which is directly adjacent to the existing catch basin behind the admin building.</li> <li>8. A new concrete drainage channel is being formed and poured just east of the new leachate pad.</li> <li>9. The air quality monitoring station above Cell 8 is in good order.</li> <li>10. Observed the Cell 8 construction activities from the southwest ridge, including liner material being installed and continued extension of the perimeter drainage channel.</li> <li>11. Placing trash in the new Cell 8 is projected for October 2022.</li> <li>12. The western box drainage channel has soil spilled onto floor, partially blocking the channel.</li> <li>13. The westside perimeter ridge is in good order.</li> <li>14. The mitigation oak trees are in good condition.</li> <li>15. A landfill gas odor is present along the perimeter access road below Cell 5. Workers are repairing a gas well, and installing a pump to dewater the area.</li> <li>16. Wind-blown litter has been removed along the western perimeter slopes.</li> <li>17. The homeowner drop-off area is in good order. A tarp is used for covering trash from Monday through Friday, then it is covered with soil on Saturday.</li> <li>18. Observed the wet weather top deck, including additional shredded rubber for drainage construction.</li> <li>19. Observed the working area at Cell 6 from the top deck, including two tippers at the east end of cell and moving floor trucks to the west, traffic controllers, orchard fans and water trucks to control dust and odors. ADC is 20% covered with new trash at 9:30 am.</li> <li>20. A Morooka tank truck is spraying white-colored odor-neutralizing foam onto fresh trash for odor control.</li> <li>21. The truck wash station is in good order.</li> <li>22. Future Cell 7 area has continued excavation work present along northwest side of cell.</li> <li>23. The closed canyon B area is in good order, including condensate storage tank.</li> <li>24. The northeast sediment basin is in good order, with water level decreasing due to evaporation.</li> <li>25. The closed primary canyon top deck is in good order, with liner material being stored at the northwest end. The clay stockpile has been mostly depleted, used for Cell 8 construction. Stockpiled soil is being sifted and stored in large piles.</li> </ol>	

26. The Wolcott Way entrance area is in good order, as viewed from high on the east perimeter ridge below primary canyon. No new construction activity was observed.
27. The air quality monitoring station above the Wolcott Way project area is in good order.
28. Flare 100 is operating at 2737 scfm, 1498 °F. Gas sample measured at 33 % Vol. CH<sub>4</sub>, 1.1 % Vol. O<sub>2</sub>, 240 ppm CO, and 14 ppm H<sub>2</sub>S. Inlet temperature is at 120 °F.
29. Flare 150 is operating at 2715 scfm, 1569 °F. Inlet temperature is at 115 °F.
30. The breakroom area is in good order.
31. Traffic spotters are onsite to control traffic.
32. The south terminal basin is almost dry, with mud at low-point.
33. One air quality monitoring station is being stored behind the admin facility, while permits for installation are pending approval.
34. Checked out of site with Nicole Ward.
35. Monitor drove Chiquito Canyon Road and observed minimal wind-blown litter along slopes that are adjacent to the landfill's perimeter fencing.
36. Large flat areas west of the landfill perimeter slopes have been plowed.
37. Monitor drove through the Val Verde neighborhood; no odors are present at 11:25 am.

**FURTHER REVIEW NEEDED**

1. Clear the western box drainage channel of spilled soil.

Signed: 

# September 2022



**CHIQUITA CANYON LANDFILL  
MITIGATION MONITORING SITE REPORT**

Monitor: James T. Aidukas	Page: 1 of 2
Discipline: Project Manager	Date: 8-23-2022

Site Conditions: 65–95°F, 0–10 mph winds

**SITE LOG**

Drove the area around the site and the adjacent Val Verde neighborhood from 7:00 to 7:50 a.m. There were no landfill odors detected outside of the landfill perimeter. There was no landfill litter seen outside of the landfill limits. There was no illegal dumping on Franklin Parkway or Chiquito Canyon Road. The Franklin Parkway air monitoring station was operating with no concerns noted. There was no construction activity occurring at the Wolcott Way future facilities area. The graffiti on the traffic signal equipment block wall and the road bridge structure off of Chiquito Canyon Road still was not removed. Met with Mike Lindsay (UltraSystems), Edgar De La Torre (LACDRP), and Nicole Ward (Waste Connections). We then proceeded to monitor the site in separate vehicles and observed the following:

- The area outside of the liquids handling facility wall was graded and asphalt was being placed. The access road to the westside ridgeline was graded. A drainage channel was being constructed to handle the Cell 8A slope rainwater runoff. The piping on the liquids handling facility's storage vessels was not yet installed. Baker tanks were being used to handle the liquids.
- The final grading of the catch basin was done.
- The Cell 8A HDPE liner was being placed on the floor and side slopes. Additional drainage channels and v-ditches downcomers were constructed since the last site visit.
- The upper portion of Cell 6 was active accepting waste. Orchard fans were operating. A Morooka tank truck was spraying a white foam odor neutralizer on fresh odorous waste. Fresh waste odors were being controlled to the active area.
- Localized dust was being generated from truck traffic on the realigned main dirt access road and the dirt road to the active waste area. Watering of the dirt roads did not eliminate all of the dust generation.
- The western box channel was being extended into the Cell 8A area. Construction soil was blocking part of the existing box channel.
- The western ridgeline had same wind-blown litter that was on the exterior hillside that blow around the secondary litter fence. This minor litter was too high on the steep slope to be removed. Other windblown litter was removed.
- The westside drainage channel around the landfill perimeter had soil and debris removed in all but one small area. Vegetation growing on the channel's concrete edge has not been removed.
- Additional concrete and asphalt debris was stockpiled on the Cell 5 top deck for wet weather use.
- Some of the landfill slopes were covered with mulch. Paper debris was not yet removed from the mulch.
- A small homeowner area was observed. A tarp was being used for cover of the prior day's waste. There were no odors being emitted and no concerns were noted.

Page 2 of 8-23-2022

- The northeast sediment basin had standing water. The water was not able to be pumped due to the presence of toads.
- Excavation work was being done in the northeast area of the future Cell 7. This area is having the site prepared to be the next disposal cell. Cell 8B is being delayed due to Wolcott Way permitting delays.
- The primary canyon top deck was being used for clay, liner, and cover soil stockpiling. Cell 8A construction soil was being stockpiled there and used for daily cover. Soil is also being sifted and stockpiled for use as cushion material for Cell 8A.
- The terminal basin was dry. Cleaning out sediment and any required improvements will be done after September 15.
- One monitoring station is being stored behind the administration office.

FURTHER REVIEW NEEDED

Signed:



**CHIQUITA CANYON LANDFILL  
MITIGATION MONITORING SITE REPORT**

Monitor: Mike Lindsay	Page: 1 of 2
Discipline: Environmental Engineer	Date: 09-13-2022 Tuesday
Site Conditions: Partly Cloudy, 64–87 °F, NW 2–12 mph, 65% RH, 38 AQI	
<b>SITE LOG</b>	
<ol style="list-style-type: none"> <li>1. Checked into office with Steve Cassulo (Waste Connections).</li> <li>2. Met with Jim Aidukas (UltraSystems), and Edgar De La Torre and Ai-Viet Huynh (LACDRP). We followed Steve Cassulo to site locations in separate vehicles.</li> <li>3. Water trucks are applying water throughout site for dust control.</li> <li>4. The relocated leachate holding tanks have been plumbed to supply lines, with no odors present. A temporary holding tank is planned on being installed to help settle out sediment. Vacuum lines send tank fumes to the flares for destruction.</li> <li>5. Workers are installing leachate transfer lines to holding tank area.</li> <li>6. Street sweepers are cleaning the haul roads.</li> <li>7. The new sediment basin, which is directly adjacent to the existing catch basin behind the admin building, has some water at low-point from recent rains.</li> <li>8. The new concrete drainage channel just east of the new leachate pad has been completed.</li> <li>9. The air quality monitoring station above Cell 8 is in good order.</li> <li>10. The westside perimeter ridge is in good order, with no wind-blown trash present.</li> <li>11. Observed the Cell 8 construction activities from the southwest ridge, including liner material being installed and completion of the perimeter drainage channel extension.</li> <li>12. Dump trucks are bringing sifted soil onto the Cell 8 floor, then a bulldozer spreads it out evenly.</li> <li>13. Three gabion drainage structures are planned for construction within Cell 8.</li> <li>14. Placing trash in the new Cell 8 is still projected for October 2022.</li> <li>15. The western box drainage channel has soil spilled onto floor, partially blocking the channel.</li> <li>16. Safety escape ladders are being constructed for the box channel interior.</li> <li>17. Observed the working area at Cell 6, including two tippers at the east end of cell and moving floor trucks to the west, traffic controllers, orchard fans and water trucks to control dust and odors. ADC is 90% covered with new trash at 9:45 am.</li> <li>18. A Morooka tank truck is spraying white-colored odor-neutralizing foam onto fresh trash for odor control.</li> <li>19. The wet weather top deck is in good order.</li> <li>20. The homeowner drop-off area is in good order.</li> <li>21. A drilling rig is drilling a new gas recovery well along the north edge of the top deck area.</li> <li>22. The gas to energy plant is in good order, with no odors present.</li> <li>23. Future Cell 7 area has continued excavation work present along northwest side of cell.</li> <li>24. The truck wash station is in good order.</li> <li>25. The closed canyon B area is in good order, including condensate storage tank.</li> <li>26. The northeast sediment basin is in good order, with water level decreasing due to evaporation.</li> <li>27. The closed primary canyon top deck is in good order, with liner material being stored at the northwest end. The clay stockpile has been mostly depleted, used for Cell 8 construction. Additional stockpiled soil is being sifted and stored in large piles.</li> </ol>	

28. The Wolcott Way entrance area is in good order, as viewed from high on the east perimeter ridge below primary canyon. No new construction activity was observed.
29. The air quality monitoring station above the Wolcott Way project area is in good order.
30. Flare 100 is operating at 2043 scfm, 1516 °F. Gas sample measured at 32 % Vol. CH<sub>4</sub>, 0.1 % Vol. O<sub>2</sub>, 280 ppm CO, and 18 ppm H<sub>2</sub>S. Inlet temperature is at 113 °F.
31. Flare 150 is operating at 1930 scfm, 1585 °F. Inlet temperature is at 125 °F.
32. The breakroom area is in good order.
33. Traffic spotters are onsite to control traffic.
34. The two track-out rumble strips along the main haul road are mostly full of sediment.
35. The scales are in good order, with no odors present.
36. The south terminal basin is almost dry, with mud at low-point.
37. The last air quality monitoring station has been installed.
38. Checked out of site with Steve Cassulo.
39. Monitor drove Chiquito Canyon Road and observed minimal wind-blown litter along slopes that are adjacent to the landfill's perimeter fencing.
40. Monitor drove through the Val Verde neighborhood; no odors are present at 11:20 am.

**FURTHER REVIEW NEEDED**

1. Clear the western box drainage channel of spilled soil.
2. Continue to clean the track-out strips of soil and debris as part of the maintenance plan.

Signed: *Michael W. Lindsay*