

**Chiquita Canyon Landfill
Independent Monitor
Quarterly Site Monitoring Status Report
April 1, 2022 through June 30, 2022**

Prepared For:

County of Los Angeles Department of Regional Planning



Prepared By:



16431 Scientific Way
Irvine, California 92618

Prepared On:

October 4, 2022



UltraSystems
environmental | management | planning

Certification Statement

October 4, 2022

The attached Quarterly Site Monitoring Status Report for the Chiquita Canyon Landfill dated October 4, 2022 is the Second Quarterly Report for 2022, issued by UltraSystems. This report covers the monitoring period from April 1, 2022 through June 30, 2022 and is prepared for the County of Los Angeles Department of Regional Planning.

I, James T. Aidukas, Project Manager for the Mitigation Monitoring Services of the Chiquita Canyon Landfill, certify that the statements in the Quarterly Report and the referenced monthly reports reflect the site conditions observed and compliance status noted by me and other qualified experts during the stated site visits.

Signed,

James T. Aidukas

Project Manager

Corporate Office – Orange County
16431 Scientific Way
Irvine, CA 92618-4355

Telephone: 949.788.4900
Facsimile: 949.788.4901
Website: www.ultrasystems.com

Contents

Quarterly Status Report.....	1
Site Visits During the Quarter.....	1
Definition of Terms.....	1
Acronyms and Abbreviations.....	2
Status Summary.....	3
Action Plan.....	9
Conclusion.....	9

Appendices

Appendix I	Photo Location Map and Site Monitoring Photos
Appendix II	Quarterly Site Visit Attendees by Date and Mitigation Monitoring Site Reports
Appendix III	Chiquita Canyon Landfill – Monitoring Conditions

Quarterly Status Report

This Quarterly Status Report is a compilation of the period's monthly Site Monitoring. After each site visit, the UltraSystems monitors who went to the Chiquita Canyon Landfill site each wrote a Site Visit Report. Any issues that required immediate attention were reported to Waste Connections staff and the appropriate staff at the County of Los Angeles Department of Regional Planning, the County of Los Angeles Department of Public Works and the Los Angeles County Local Enforcement Agency (LEA).

Site visits during the 2nd Quarter followed the CDC guidelines for COVID-19 health protocols and complied with state and County restrictions. The landfill visits occurred on one day each month during the April, May and June 2022 period.

All UltraSystems monitors were in separate vehicles to observe and take photos of the landfill area and operations. There was limited contact with landfill staff. Any contact with staff observed social distancing, and the wearing of protective face coverings when in close proximity. There were no indoor gatherings.

The project team specialists reviewed the site photos and site visit reports remotely in the UltraSystems offices and developed a list of discussion items to review with landfill management. A monitoring conference call with landfill management provided answers and the status of the discussion items. This call was then transcribed, which concluded the monitoring activity.

This Quarterly Report provides the County of Los Angeles Department of Regional Planning with a concise status of the Mitigation Measure Monitoring for the period of April 1, 2022 to June 30, 2022. It includes:

1. A Status Summary of Compliant, Pending Review, Further Review Needed, and Non-Compliant with the requirements of the conditions and/or mitigation measures;
2. Photo Location Map and Site Monitoring Photos showing site conditions of key areas of the landfill during this quarter;
3. Site visit attendees by date of site visit and their site reports; and
4. Site Monitoring Conference Call Discussion Items and Site Monitoring call transcripts.

Site Visits During the Quarter

Three site visits were performed by UltraSystems during the April 1, 2022, through June 30, 2022 period in order to observe operational site activities. They were performed on April 26, 2022; May 24, 2022; and June 21, 2022.

Definition of Terms

Compliant is defined as complying with the County conditions and/or mitigation measures.

Pending Review is defined as UltraSystems not yet having obtained nor reviewed any necessary landfill documents to assess that a program, plan, or testing satisfies the condition.

Further Review Needed is defined as implementing plans (agency-approved, if required) to fully comply with a condition and/or mitigation measure. Some plans, especially vegetation, require an extended time frame, and immediate compliance is not possible.

Non-Compliant is defined as not complying with the County conditions and/or mitigation measures.

Acronyms and Abbreviations

ADC	Alternative Daily Cover
BMPs	Best Management Practices
CAC	Community Action Committee
Cal-IPC	California Invasive Plant Council
CalRecycle	State of California Department of Resources Recycling and Recovery
Caltrans	State of California Department of Transportation
CARB	California Air Resources Board
CCL	Chiquita Canyon Landfill
CCR	California Code of Regulations
CDFW	California Department of Fish and Wildlife
CEO	Los Angeles County Chief Executive Office
CIP	Capital Improvement Plan
County	Los Angeles County
CPI	Consumer Price Index
CRMP	Cultural Resources Monitoring Plan
CRWQCB	California Regional Water Quality Control Board
CUP	Conditional Use Permit
CWA	Clean Water Act
DPH	Los Angeles County Department of Public Health
EIR	Environmental Impact Report
EPA	United States Environmental Protection Agency
GHG	Greenhouse Gas
IMP	Implementation and Monitoring Program
LACDPW	Los Angeles County Department of Public Works
LACDRP	Los Angeles County Department of Regional Planning
LEA	Los Angeles County Local Enforcement Agency
LFG	Landfill Gas
LFGTE	Landfill Gas-to-Energy Plant
MMRP	Mitigation Monitoring and Reporting Program
MPH	Miles per Hour
MRF	Materials Recovery Facility
NOD	Notice of Determination
NOV	Notice of Violation
OIMP	Odor Impact Minimization Plan
ORM	Odor Reduction Measure
OTP	Oak Tree Permit
RWQCB	Regional Water Quality Control Board
SCAQMD	Southern California Air Quality Management District
SOC	Statement of Overriding Considerations

SWFP	Solid Waste Facilities Permit issued by CalRecycle
SWMP	Solid Waste Management Program
TAC	Technical Advisory Committee
TPY	Tons per Year
USACE	United States Army Corps of Engineers
USFWS	United States Fish and Wildlife Service

Status Summary

This section summarizes the status of UltraSystems' independent monitoring of County conditions and/or mitigation measures that are set forth in Appendix III, and County-approved plans, programs, or testing.

Compliant with Conditions

- (CUP 22)** A graffiti-deterrent program has been approved by LACDPW and maintained by Waste Connections. No graffiti was observed on the exterior wall or within the landfill facility during the 2nd Quarter of 2022. In June, the Chiquito Canyon Road new traffic control equipment cement block wall and the road bridge structure west of this equipment was graffitied. It is recommended that Caltrans and the County local road department for this area remove the graffiti and monitor this area for reoccurrence.
- (CUP 23)** The amount of waste received is within the maximum tonnage allowed.
- (CUP 37)** One year before the 5th anniversary of the effective date of this grant, a permit requirement compliance study, which details the status of the permittee's compliance, shall be initiated by the permittee. This study was submitted to the County of Los Angeles Department of Regional Planning.
- (CUP 40)** The facility is in compliance with the allowed operating hours.
- (CUP 43)** The facility is compliant with not using the listed prohibited material as an alternative waste cover. The facility obtained approval from CalRecycle and RWQCB to use shredded rubber tire chips for the drainage media in the buried horizontal gas collection system in lieu of crushed rock. This allows for better gas and liquids flow in the collection system. This also is compliant with County diversion efforts.
- (CUP 46)** Diversion and Public Awareness and Education Programs have been approved. The monitor has observed onsite compliance with diversion. This includes electronic waste and white goods consolidation and division; separation and grinding of concrete and asphalt for road construction and wet weather decking; and the use of alternative daily cover to minimize the use of soil cover. The programs are publicized through periodically distributed flyers, Chiquita Canyon Landfill's website postings, and their quarterly published newsletters.
- (CUP 48)** Prohibited waste was not observed being accepted, processed, or disposed of at the landfill.

- (CUP 49)** Waste Connections sends email notices concerning prohibited waste to managers of waste-hauling companies and individual haulers. These email notices provide information on what waste is accepted and prohibited. The site keeps records of the recipients.
- (CUP 55)** Appropriate surface water control systems have been installed and maintained at the landfill site to divert and control surface water impacts. The design and construction plans and engineering calculations are approved by RWQCB and LACDPW. Removal of sediment and other maintenance of the basins starts on September 1 and are completed prior to October 1. This late maintenance start is due to California Fish and Wildlife environmental restrictions. Removal of sediment and brush in drainage channels starts in late May and is completed prior to October 1. Windblown litter is picked up as soon as possible to keep the landfill surface and the water control systems free of litter. The availability of temporary workers has been impacted by COVID-19. Due to labor shortages, litter takes a longer time to be picked up.
- (CUP 56)** All development structures and required activities are reviewed and approved by County Public Works and permits issued, when required.
- (CUP 57)** Landfill liner and leachate collection systems have been installed and approved by RWQCB before waste was placed. Gabion structures are being installed on the Cell's bottom liner to enhance landfill gas and liquids recovery.
- (CUP 59)** Currently, there is no recycled water available for use at the landfill facility.
- (CUP 66)** Flares were observed and operating during site monitoring. No abnormal conditions were observed. Installation of a new landfill gas flare is now scheduled to start in 2023. This will increase the amount of gas that could be flared and replace an older flare with a new, slightly lower NO_x emissions flare.
- (CUP 67)** Waste Connections has installed a permanent backup generator for use during power outages and it is load-tested quarterly. The generator has been permanently connected to the site's electrical system.
- (CUP 71)** Waste Connections has certification documents that show their vehicles being in compliance with CARB.
- (CUP 73)** A Fugitive Dust Control Program is being implemented at the landfill. Only localized dust from truck traffic was observed on the unpaved roads. Occasional dust was observed coming from transfer trucks tipping dusty loads. No dust was observed leaving the site during site monitoring visits. FivePoint was tilling their land immediately east of Chiquito Canyon Road to remove dry vegetation. This was causing large dust clouds. These tilled areas may be a problem for the Val Verde neighborhood when high winds occur.
- (CUP 75, 76)** There was no queuing of trucks at the entrance that extended past the main gate.
- (CUP 84)** A Track-Out Preventive and Minimization Plan is being implemented at the landfill. Paved roads were observed to be clean during site monitoring. Rumble steel plates were being used at junction points from dirt roads and working areas onto paved roads.

The main access road has been reconstructed with compacted engineering fill and covered with crushed concrete and asphalt. This road is a temporary road and will remain unpaved until the new Wolcott Way road is constructed. The road is sprayed with water by water trucks to control dust.

(CUP 82, 85, 86 and 87)

A Vehicle Tarping, Litter Control and Litter Recovery Program is being implemented at the landfill. During onsite monitoring days, litter was seen on slopes onsite after high wind occurrences. Litter was being recovered by hand. Litter from landfill operations was not observed offsite except for minor amounts of litter on the very top five-to-ten feet of the western landfill ridgeline. This litter blew around and over the secondary ridgeline litter fences.

(CUP 97) The site had an old underground fuel storage tank located in the future Cell 8 area. This tank has been removed for Cell 8 development. CCL stated that County permits for the removal were obtained. There are currently no underground fuel storage tanks.

(CUP 107) A Work Plan for Seismic Monitoring is being implemented at the landfill. The location of the equipment and site monitoring frequency has not been verified.

(CUP 127) The site is compliant with the sign posting requirements.

(CUP 128) The site is compliant with the hotline requirements.

Pending Review

(CUP 26) The landfill facilities have been relocated to temporary locations to allow for the reconstruction of the current paved access road, the construction of the final toe berm, and construction of Cell 8. Cell 8 was split into a Cell 8A and Cell 8B construction project due to the lack of obtaining all the permits for the Wolcott Way facilities. A revised site plan should be submitted to and approved by LACDPW and LACDRP.

(CUP 52) Surface water monitoring data was not reviewed.

(CUP 64) The current amount of landfill gas being recovered averages approximately 9000 SCFM. The gas-to-energy plant burns approximately 3500 SCFM (approximately 40% of the total gas recovered) and 5000 SCFM is currently being flared. Waste Connections is working with gas treatment and sales experts to install a facility to treat the landfill gas now being flared (and future gas increases) and produce and sell it as high-BTU gas.

(CUP 68) The air quality monitor consultant has not yet installed three air quality monitoring stations outside the landfill property boundary. The method for analyzing and interpreting the data collected and the setting of thresholds has not been released by the consultant.

(CUP 69) SCAQMD issued a modified Stipulated Order for Abatement on March 13, 2021 for odor nuisance violations. The landfill is in compliance with this order. The end date of this order is not known.

(CUP 74) An Odor Impact Minimization Plan is being implemented at the landfill. Odors were not detected by the monitor in the immediate residential areas during monitoring visits.

(CUP 75, 76) The program to reduce unnecessary truck trips and minimize queuing was not reviewed.

(CUP 95) The program to identify and conserve all significant archeological and paleontological material found onsite was not reviewed.

(CUP 134, 135, 136, 137, 138) Oak tree mitigation documents were not reviewed.

Further Review Needed

(CUP 1, 27 and 124) The Chiquita Canyon Landfill received County approval with conditions to proceed with Option 2 in their letter of November 30, 2018 in order to comply with CUP Conditions Nos. 27 and 124 concerning the construction and operation of a household hazardous waste facility. An onsite household hazardous waste facility will not be constructed until the new entrance roadway realignment and scalehouse construction are completed. The start of construction of the Wolcott Way new facilities has been delayed due to permits not being obtained. Specifics on the status of permitting and construction schedules are given in CUP 77, below. The start of construction of a household waste facility cannot be estimated at this time. The facility's design and construction plans were not prepared and submitted for review and approval. Condition 124 was also being challenged by Waste Connections. The status of that challenge is unknown at this time.

(CUP 1, 28) There is no organic waste composting facility currently onsite. The final certified EIR proposed a facility in the Wolcott Way site plan area. The feasibility of constructing and operating a composting facility has not been provided by Waste Connections. Currently, there are no plans for Waste Connections to construct and operate an organic waste composting facility.

(CUP 29) The current waste fill height and liner footprint are within the approved CUP limits for the operating landfill. The closed primary canyon landfill top deck has been used for stockpiling of soil from cell construction. Verification of compliance with height and other permit conditions that limit use of this closed landfill has not been investigated by the monitor. The stockpiled soil on the top deck of the closed landfill is being used for the landfill daily cover. A significant amount of the stockpile was utilized during the prior report period. The Cell 8 liner clay, synthetic fabric and HDPE liner, and screened cushion soil is being stored on the top deck. Soil from the construction of Cell 8 is also being stockpiled on this top deck. The ability to use this closed landfill area for these operation activities needs to be verified.

(CUP 41) A general "One-Year Plan Map" plan in lieu of fill sequence plans have been developed and used at the site. Fill plans for landfill cells have been developed, numbered and presented in the annual reports. They are referred to as "phasing limits." Each cell is numbered. The filling sequence does not follow a numerical order. A written explanation of when each numbered cell is scheduled to be filled and what cell will be

the next to be developed and filled should be developed by Waste Connections and presented to the agencies.

- (CUP 47)** Higher tipping rates for partial loads is accomplished by a minimum load charge of one ton. LACDPW has not issued a letter of compliance with the condition using a minimum load charge.
- (CUP 51)** The only grading outside of the approved fill limits were observed in the southwest area of Cell 8 development. Fill limits, as noted on environmental and landfill cell liner limit drawings, include disturbance and excavation/earthfill outside of the liner limits for geological reasons. Approval by LACDPW was given because grading was required to address hillside stability by removing the previously identified landslide to stabilize the Cell 8 area.
- (CUP 55)** During the LACDPW review of construction plans for Cell 8 and the final toe berm, the size and construction of the final catch basin and terminal basin were an issue that require supplying engineering calculation and design support for the current basins. The issues are still under review by LACDPW permitting division.
- (CUP 63)** During site monitoring visits, the monitor did not detect any odor or see any dust from the landfill operations that left the site. There were only localized odors normally detected that were from newly disposed waste. This occurred when you were within 300 feet of the operating area. Orchard fans were normally seen operating. A non-scented odor neutralizer foam was being sprayed on transfer truck loads that were potentially odorous to control odors at the working face. In the 2nd Quarter, a misting system was operating on the ridge above Cell 6. The mist water had included a non-scented odor neutralizer. Localized odors were also being controlled at the northwest perimeter slopes. Throughout the 2nd Quarter, the monitor did not detect odors in the Val Verde neighborhood in the mid-morning timeframe on site visit days. Localized dust occurred during the 2nd Quarter on the realigned main access roads to the active fill area and tipping of dusty loads. This road is a temporary road and was not paved. Dust did not leave the immediate dirt access roads and working areas.

Non-Compliant

(CUP 77) There was no construction activity at the Wolcott Way future facilities site. These facilities improvements are still in the permitting phase. The CUP required these improvements to be completed within one year of the effective date of the CUP. The following progress on the required improvements was made in the 2nd Quarter.

Caltrans improvements and County road improvements: Final design of road improvements are still lacking agreement by the agencies, FivePoint and Waste Connections. Once finalized, permitting will follow. Road improvements' permitting may not be approved until mid-2023.

Edison Pole Replacements: In the last quarter, the Edison power poles were relocated with the new poles located in an area which will allow for the future facilities to be constructed.

Site grading and soil facilities development: There has been very little progress in obtaining resolution of outstanding development issues with all of the agencies, FivePoint and Waste Connections. Permitting for the Wolcott facility may not be issued until late 2023.

California Department of Fish and Wildlife permits have been issued for the Wolcott Way improvements, except for the new sediment and spadefoot toad basins. The building permits for the two basins were not yet approved by Fish and Wildlife pending review of basin design details.

(CUP 68, 77, 79, and 113)

The County Department of Regional Planning issued a Notice of Violation on June 11, 2020 to Waste Connections for a lack of progress in complying with these conditions. The resolution of this violation is not known by the monitor.

Action Plan

Compliant with Conditions

These conditions will continue to be monitored for compliance on future site visits.

Pending Review

The monitor will schedule a site monitoring conference call to solely obtain and review documents and have site staff describe procedures being used to assure compliance with these conditions.

Further Review Needed

The monitor will investigate and obtain necessary information and data, as well as observe site conditions on future visits to determine status of compliance of the CUP conditions noted.

Non-Compliant

During the monitoring period, non-compliant with CUP conditions were noted. All of these were related to the timely implementation of construction of the new entrance, Caltrans improvements, and new facilities at the Wolcott Way site. Permitting issues remain a problem. SCAQMD adopted a modified Stipulated Order of Abatement dated March 13, 2021 to control offsite landfill odors. A mitigation plan is being implemented.

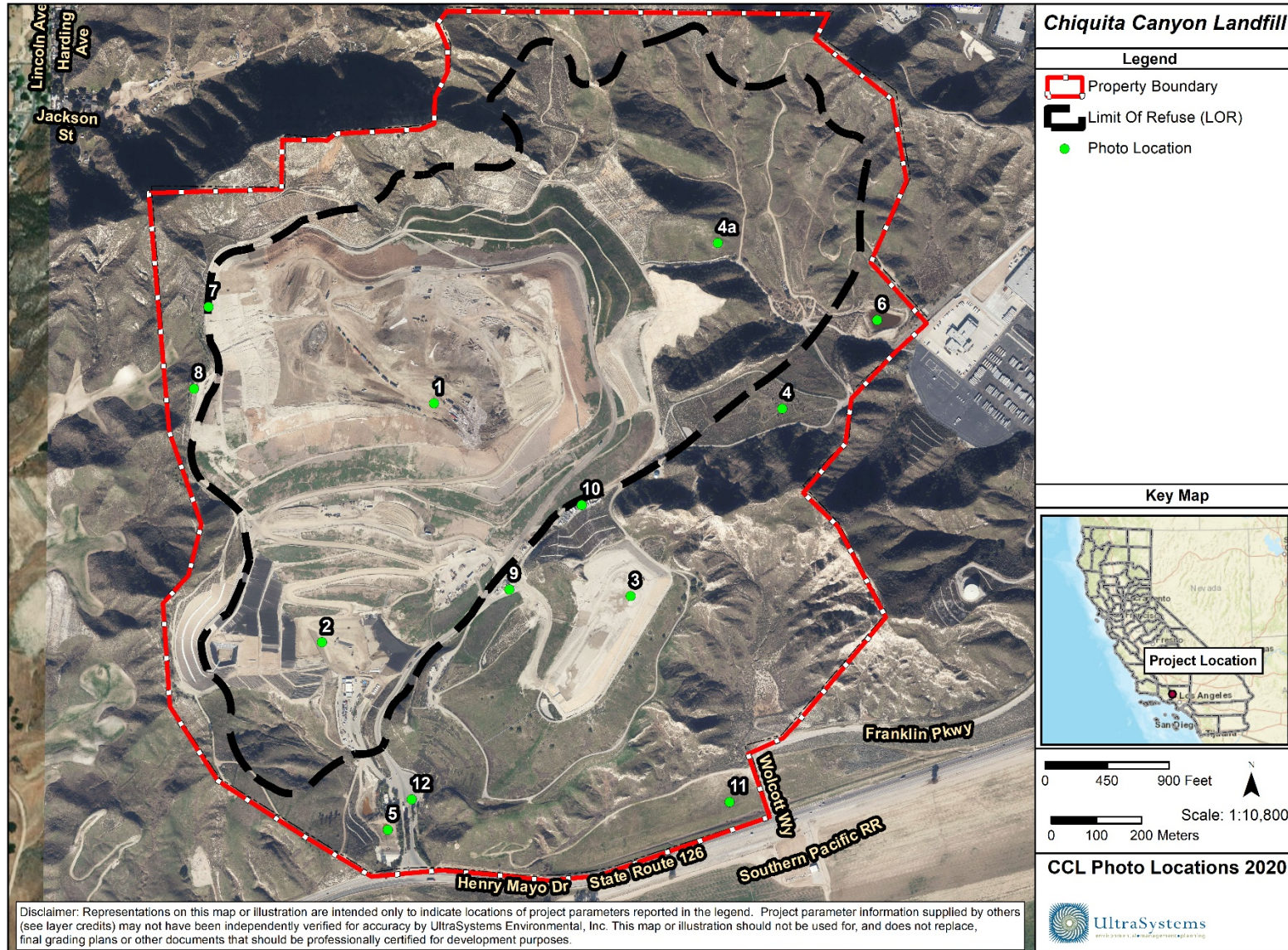
Conclusion

In this reporting period, UltraSystems has monitored the conditions and/or mitigation measures for the County, as shown above in the Status Summary.

The landfill is actively working toward being fully compliant with conditions and/or mitigation measures, with no landfill operations non-compliant conditions observed during site visits, except for lack of having progress with meeting CUP conditions for required site improvements and construction of auxiliary facilities.

Appendix I

Relevant Site Photos



September 16, 2020

Photo Location Map Key

Map Location	Title	Photo Number
1	Top Deck Working Area	1 - 21
2	Cell 6 Working Area	22 - 113
3	Closed Landfill - Primary Canyon	114 - 143
4	Closed Landfill - Canyon B	144 - 157
4a	Future Cells 7, 9 and 10	158 - 165
5	South Terminal and Catch Basins	166 - 195
6	Northeast Sediment Basin	196 - 222
7	Landfill Perimeter Drainage Channel	223 - 231
8	Westside Perimeter Ridge	232 - 236
9	Flare 100 and Flare 150	237 - 258
10	Gas-to-Energy Facility	259 - 261
11	Wolcott Way Entrance Facilities	262 - 285
12	Maintenance and Admin Buildings	286 - 287
-	Site, Observe Litter Offsite, Cell 8 Construction	288 - 503



Photo 1: Top Deck Working Area: May 24, 2022



Photo 2: Top Deck Working Area: May 24, 2022



Photo 3: Top Deck Working Area: May 24, 2022



Photo 4: Top Deck Working Area: May 24, 2022



Photo 5: Top Deck Working Area: May 24, 2022



Photo 6: Top Deck Working Area: May 24, 2022



Photo 7: Top Deck Working Area: May 24, 2022



Photo 8: Top Deck Working Area: May 24, 2022



Photo 9: Top Deck Working Area: May 24, 2022



Photo 10: Top Deck Working Area: May 24, 2022



Photo 11: Top Deck Working Area: May 24, 2022



Photo 12: Top Deck Working Area: May 24, 2022



Photo 13: Top Deck Working Area: May 24, 2022



Photo 14: Top Deck Working Area: May 24, 2022



Photo 15: Top Deck Working Area: May 24, 2022



Photo 16: Top Deck Working Area: June 21, 2022



Photo 17: Top Deck Working Area: June 21, 2022



Photo 18: Top Deck Working Area: June 21, 2022



Photo 19: Top Deck Working Area: June 21, 2022



Photo 20: Top Deck Working Area: June 21, 2022



Photo 21: Top Deck Working Area: June 21, 2022



Photo 22: Cell 6 Working Area: April 26, 2022



Photo 23: Cell 6 Working Area: April 26, 2022



Photo 24: Cell 6 Working Area: April 26, 2022



Photo 25: Cell 6 Working Area: April 26, 2022



Photo 26: Cell 6 Working Area: April 26, 2022



Photo 27: Cell 6 Working Area: April 26, 2022



Photo 28: Cell 6 Working Area: April 26, 2022



Photo 29: Cell 6 Working Area: April 26, 2022



Photo 30: Cell 6 Working Area: April 26, 2022



Photo 31: Cell 6 Working Area: April 26, 2022



Photo 32: Cell 6 Working Area: April 26, 2022



Photo 33: Cell 6 Working Area: April 26, 2022



Photo 34: Cell 6 Working Area: April 26, 2022



Photo 35: Cell 6 Working Area: April 26, 2022



Photo 36: Cell 6 Working Area: April 26, 2022



Photo 37: Cell 6 Working Area: April 26, 2022



Photo 38: Cell 6 Working Area: April 26, 2022



Photo 39: Cell 6 Working Area: April 26, 2022



Photo 40: Cell 6 Working Area: April 26, 2022



Photo 41: Cell 6 Working Area: April 26, 2022



Photo 42: Cell 6 Working Area: April 26, 2022



Photo 43: Cell 6 Working Area: April 26, 2022



Photo 44: Cell 6 Working Area: April 26, 2022



Photo 45: Cell 6 Working Area: April 26, 2022



Photo 46: Cell 6 Working Area: April 26, 2022



Photo 47: Cell 6 Working Area: April 26, 2022



Photo 48: Cell 6 Working Area: May 24, 2022



Photo 49: Cell 6 Working Area: May 24, 2022



Photo 50: Cell 6 Working Area: May 24, 2022



Photo 51: Cell 6 Working Area: May 24, 2022



Photo 52: Cell 6 Working Area: May 24, 2022



Photo 53: Cell 6 Working Area: May 24, 2022



Photo 54: Cell 6 Working Area: May 24, 2022



Photo 55: Cell 6 Working Area: May 24, 2022



Photo 56: Cell 6 Working Area: May 24, 2022



Photo 57: Cell 6 Working Area: May 24, 2022



Photo 58: Cell 6 Working Area: May 24, 2022



Photo 59: Cell 6 Working Area: May 24, 2022



Photo 60: Cell 6 Working Area: May 24, 2022



Photo 61: Cell 6 Working Area: May 24, 2022



Photo 62: Cell 6 Working Area: May 24, 2022



Photo 63: Cell 6 Working Area: May 24, 2022



Photo 64: Cell 6 Working Area: May 24, 2022



Photo 65: Cell 6 Working Area: May 24, 2022



Photo 66: Cell 6 Working Area: May 24, 2022



Photo 67: Cell 6 Working Area: May 24, 2022



Photo 68: Cell 6 Working Area: May 24, 2022



Photo 69: Cell 6 Working Area: May 24, 2022



Photo 70: Cell 6 Working Area: May 24, 2022



Photo 71: Cell 6 Working Area: May 24, 2022



Photo 72: Cell 6 Working Area: May 24, 2022



Photo 73: Cell 6 Working Area: May 24, 2022



Photo 74: Cell 6 Working Area: May 24, 2022



Photo 75: Cell 6 Working Area: May 24, 2022



Photo 76: Cell 6 Working Area: May 24, 2022



Photo 77: Cell 6 Working Area: May 24, 2022



Photo 78: Cell 6 Working Area: May 24, 2022



Photo 79: Cell 6 Working Area: May 24, 2022



Photo 80: Cell 6 Working Area: May 24, 2022



Photo 81: Cell 6 Working Area: June 21, 2022



Photo 82: Cell 6 Working Area: June 21, 2022



Photo 83: Cell 6 Working Area: June 21, 2022



Photo 84: Cell 6 Working Area: June 21, 2022



Photo 85: Cell 6 Working Area: June 21, 2022



Photo 86: Cell 6 Working Area: June 21, 2022



Photo 87: Cell 6 Working Area: June 21, 2022



Photo 88: Cell 6 Working Area: June 21, 2022



Photo 89: Cell 6 Working Area: June 21, 2022



Photo 90: Cell 6 Working Area: June 21, 2022



Photo 91: Cell 6 Working Area: June 21, 2022



Photo 92: Cell 6 Working Area: June 21, 2022



Photo 93: Cell 6 Working Area: June 21, 2022



Photo 94: Cell 6 Working Area: June 21, 2022



Photo 95: Cell 6 Working Area: June 21, 2022



Photo 96: Cell 6 Working Area: June 21, 2022



Photo 97: Cell 6 Working Area: June 21, 2022



Photo 98: Cell 6 Working Area: June 21, 2022



Photo 99: Cell 6 Working Area: June 21, 2022



Photo 100: Cell 6 Working Area: June 21, 2022



Photo 101: Cell 6 Working Area: June 21, 2022



Photo 102: Cell 6 Working Area: June 21, 2022



Photo 103: Cell 6 Working Area: June 21, 2022



Photo 104: Cell 6 Working Area: June 21, 2022



Photo 105: Cell 6 Working Area: June 21, 2022



Photo 106: Cell 6 Working Area: June 21, 2022



Photo 107: Cell 6 Working Area: June 21, 2022



Photo 108: Cell 6 Working Area: June 21, 2022



Photo 109: Cell 6 Working Area: June 21, 2022



Photo 110: Cell 6 Working Area: June 21, 2022



Photo 111: Cell 6 Working Area: June 21, 2022



Photo 112: Cell 6 Working Area: June 21, 2022



Photo 113: Cell 6 Working Area: June 21, 2022



Photo 114: Closed Landfill - Primary Canyon: April 26, 2022



Photo 115: Closed Landfill - Primary Canyon: April 26, 2022



Photo 116: Closed Landfill - Primary Canyon: April 26, 2022



Photo 117: Closed Landfill - Primary Canyon: April 26, 2022



Photo 118: Closed Landfill - Primary Canyon: April 26, 2022



Photo 119: Closed Landfill - Primary Canyon: April 26, 2022



Photo 120: Closed Landfill - Primary Canyon: May 24, 2022



Photo 121: Closed Landfill - Primary Canyon: May 24, 2022



Photo 122: Closed Landfill - Primary Canyon: May 24, 2022



Photo 123: Closed Landfill - Primary Canyon: May 24, 2022



Photo 124: Closed Landfill - Primary Canyon: May 24, 2022



Photo 125: Closed Landfill - Primary Canyon: May 24, 2022



Photo 126: Closed Landfill - Primary Canyon: May 24, 2022



Photo 127: Closed Landfill - Primary Canyon: May 24, 2022



Photo 128: Closed Landfill - Primary Canyon: May 24, 2022



Photo 129: Closed Landfill - Primary Canyon: May 24, 2022



Photo 130: Closed Landfill - Primary Canyon: May 24, 2022



Photo 131: Closed Landfill - Primary Canyon: May 24, 2022



Photo 132: Closed Landfill - Primary Canyon: May 24, 2022



Photo 133: Closed Landfill - Primary Canyon: May 24, 2022



Photo 134: Closed Landfill - Primary Canyon: May 24, 2022



Photo 135: Closed Landfill - Primary Canyon: May 24, 2022



Photo 136: Closed Landfill - Primary Canyon: May 24, 2022



Photo 137: Closed Landfill - Primary Canyon: June 21, 2022



Photo 138: Closed Landfill - Primary Canyon: June 21, 2022



Photo 139: Closed Landfill - Primary Canyon: June 21, 2022



Photo 140: Closed Landfill - Primary Canyon: June 21, 2022



Photo 141: Closed Landfill - Primary Canyon: June 21, 2022



Photo 142: Closed Landfill - Primary Canyon: June 21, 2022



Photo 143: Closed Landfill - Primary Canyon: June 21, 2022



Photo 144: Closed Landfill - Canyon B: April 26, 2022



Photo 145: Closed Landfill - Canyon B: April 26, 2022



Photo 146: Closed Landfill - Canyon B: April 26, 2022



Photo 147: Closed Landfill - Canyon B: April 26, 2022



Photo 148: Closed Landfill - Canyon B: April 26, 2022



Photo 149: Closed Landfill - Canyon B: May 24, 2022



Photo 150: Closed Landfill - Canyon B: May 24, 2022



Photo 151: Closed Landfill - Canyon B: May 24, 2022



Photo 152: Closed Landfill - Canyon B: May 24, 2022



Photo 153: Closed Landfill - Canyon B: June 21, 2022



Photo 154: Closed Landfill - Canyon B: June 21, 2022



Photo 155: Closed Landfill - Canyon B: June 21, 2022



Photo 156: Closed Landfill - Canyon B: June 21, 2022



Photo 157: Closed Landfill - Canyon B: June 21, 2022



Photo 158: Future Cells 7, 9, and 10: April 26, 2022



Photo 159: Future Cells 7, 9, and 10: April 26, 2022



Photo 160: Future Cells 7, 9, and 10: May 24, 2022



Photo 161: Future Cells 7, 9, and 10: May 24, 2022



Photo 162: Future Cells 7, 9, and 10: May 24, 2022



Photo 163: Future Cells 7, 9, and 10: June 21, 2022



Photo 164: Future Cells 7, 9, and 10: June 21, 2022



Photo 165: Future Cells 7, 9, and 10: June 21, 2022



Photo 166: South Terminal and Catch Basins: April 26, 2022



Photo 167: South Terminal and Catch Basins: April 26, 2022



Photo 168: South Terminal and Catch Basins: April 26, 2022



Photo 169: South Terminal and Catch Basins: April 26, 2022



Photo 170: South Terminal and Catch Basins: April 26, 2022



Photo 171: South Terminal and Catch Basins: April 26, 2022



Photo 172: South Terminal and Catch Basins: April 26, 2022



Photo 173: South Terminal and Catch Basins: April 26, 2022



Photo 174: South Terminal and Catch Basins: April 26, 2022



Photo 175: South Terminal and Catch Basins: April 26, 2022



Photo 176: South Terminal and Catch Basins: April 26, 2022



Photo 177: South Terminal and Catch Basins: April 26, 2022



Photo 178: South Terminal and Catch Basins: May 24, 2022



Photo 179: South Terminal and Catch Basins: May 24, 2022



Photo 180: South Terminal and Catch Basins: May 24, 2022



Photo 181: South Terminal and Catch Basins: May 24, 2022



Photo 182: South Terminal and Catch Basins: May 24, 2022



Photo 183: South Terminal and Catch Basins: May 24, 2022



Photo 184: South Terminal and Catch Basins: May 24, 2022



Photo 185: South Terminal and Catch Basins: May 24, 2022



Photo 186: South Terminal and Catch Basins: May 24, 2022



Photo 187: South Terminal and Catch Basins: June 21, 2022



Photo 188: South Terminal and Catch Basins: June 21, 2022



Photo 189: South Terminal and Catch Basins: June 21, 2022



Photo 190: South Terminal and Catch Basins: June 21, 2022



Photo 191: South Terminal and Catch Basins: June 21, 2022



Photo 192: South Terminal and Catch Basins: June 21, 2022



Photo 193: South Terminal and Catch Basins: June 21, 2022



Photo 194: South Terminal and Catch Basins: June 21, 2022



Photo 195: South Terminal and Catch Basins: June 21, 2022



Photo 196: Northeast Sediment Basin: April 26, 2022



Photo 197: Northeast Sediment Basin: April 26, 2022



Photo 198: Northeast Sediment Basin: April 26, 2022



Photo 199: Northeast Sediment Basin: April 26, 2022

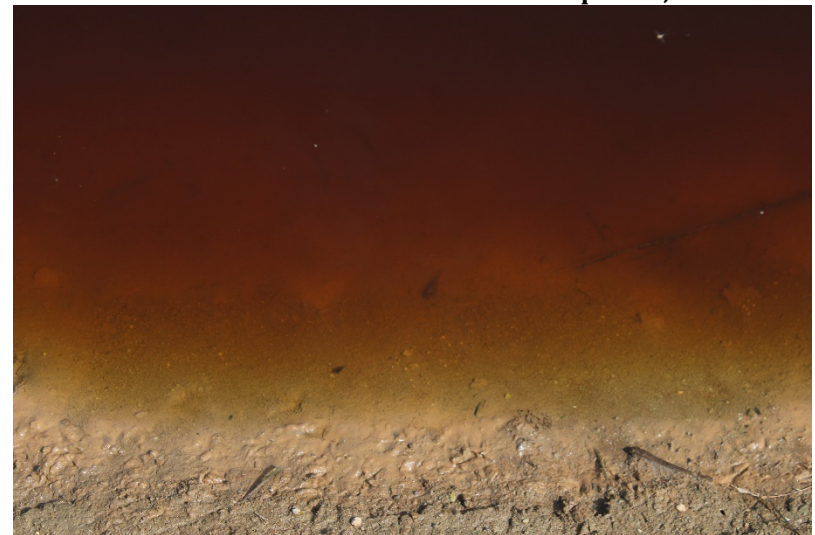


Photo 200: Northeast Sediment Basin: April 26, 2022



Photo 201: Northeast Sediment Basin: April 26, 2022



Photo 202: Northeast Sediment Basin: May 24, 2022



Photo 203: Northeast Sediment Basin: May 24, 2022



Photo 204: Northeast Sediment Basin: May 24, 2022



Photo 205: Northeast Sediment Basin: May 24, 2022



Photo 206: Northeast Sediment Basin: May 24, 2022



Photo 207: Northeast Sediment Basin: May 24, 2022



Photo 208: Northeast Sediment Basin: May 24, 2022



Photo 209: Northeast Sediment Basin: May 24, 2022

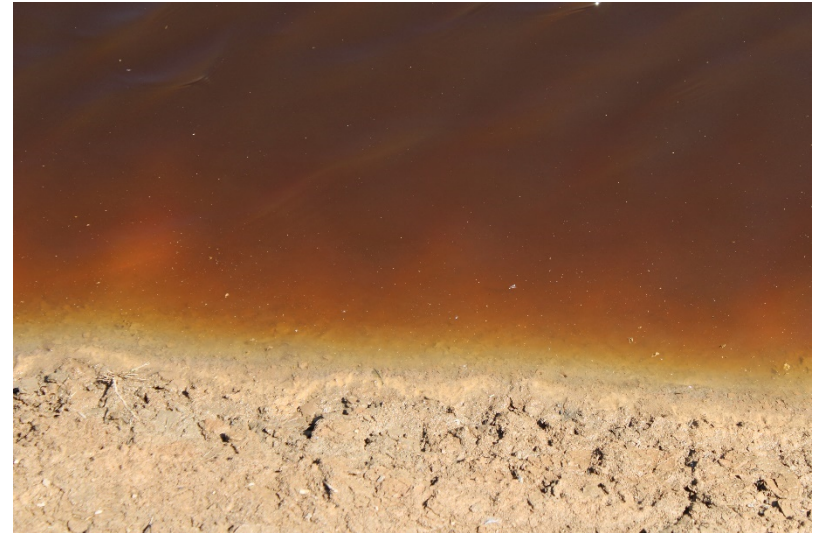


Photo 210: Northeast Sediment Basin: May 24, 2022



Photo 211: Northeast Sediment Basin: May 24, 2022



Photo 212: Northeast Sediment Basin: May 24, 2022



Photo 213: Northeast Sediment Basin: May 24, 2022



Photo 214: Northeast Sediment Basin: May 24, 2022



Photo 215: Northeast Sediment Basin: May 24, 2022



Photo 216: Northeast Sediment Basin: June 21, 2022



Photo 217: Northeast Sediment Basin: June 21, 2022



Photo 218: Northeast Sediment Basin: June 21, 2022



Photo 219: Northeast Sediment Basin: June 21, 2022



Photo 220: Northeast Sediment Basin: June 21, 2022



Photo 221: Northeast Sediment Basin: June 21, 2022



Photo 222: Northeast Sediment Basin: June 21, 2022



Photo 223: Landfill Perimeter Drainage Channel: May 24, 2022



Photo 224: Landfill Perimeter Drainage Channel: May 24, 2022



Photo 225: Landfill Perimeter Drainage Channel: May 24, 2022



Photo 226: Landfill Perimeter Drainage Channel: May 24, 2022



Photo 227: Landfill Perimeter Drainage Channel: May 24, 2022



Photo 228: Landfill Perimeter Drainage Channel: May 24, 2022



Photo 229: Landfill Perimeter Drainage Channel: May 24, 2022



Photo 230: Landfill Perimeter Drainage Channel: June 21, 2022



Photo 231: Landfill Perimeter Drainage Channel: June 21, 2022



Photo 232: Westside Perimeter Ridge: May 24, 2022



Photo 233: Westside Perimeter Ridge: May 24, 2022



Photo 234: Westside Perimeter Ridge: May 24, 2022



Photo 235: Westside Perimeter Ridge: May 24, 2022



Photo 236: Westside Perimeter Ridge: May 24, 2022



Photo 237: Flare 100 and Flare 150: April 26, 2022



Photo 238: Flare 100 and Flare 150: April 26, 2022



Photo 239: Flare 100 and Flare 150: April 26, 2022



Photo 240: Flare 100 and Flare 150: April 26, 2022



Photo 241: Flare 100 and Flare 150: April 26, 2022



Photo 242: Flare 100 and Flare 150: April 26, 2022



Photo 243: Flare 100 and Flare 150: April 26, 2022



Photo 244: Flare 100 and Flare 150: May 24, 2022



Photo 245: Flare 100 and Flare 150: May 24, 2022



Photo 246: Flare 100 and Flare 150: May 24, 2022



Photo 247: Flare 100 and Flare 150: May 24, 2022



Photo 248: Flare 100 and Flare 150: May 24, 2022



Photo 249: Flare 100 and Flare 150: May 24, 2022



Photo 250: Flare 100 and Flare 150: May 24, 2022



Photo 251: Flare 100 and Flare 150: June 21, 2022



Photo 252: Flare 100 and Flare 150: June 21, 2022



Photo 253: Flare 100 and Flare 150: June 21, 2022



Photo 254: Flare 100 and Flare 150: June 21, 2022



Photo 255: Flare 100 and Flare 150: June 21, 2022



Photo 256: Flare 100 and Flare 150: June 21, 2022



Photo 257: Flare 100 and Flare 150: June 21, 2022



Photo 258: Flare 100 and Flare 150: June 21, 2022



Photo 259: Gas-to-Energy Facility: April 26, 2022



Photo 260: Gas-to-Energy Facility: May 24, 2022



Photo 261: Gas-to-Energy Facility: June 21, 2022



Photo 261: Gas-to-Energy Facility: June 21, 2022



Photo 263: Wolcott Way Entrance Facilities: April 26, 2022



Photo 264: Wolcott Way Entrance Facilities: April 26, 2022



Photo 265: Wolcott Way Entrance Facilities: April 26, 2022



Photo 266: Wolcott Way Entrance Facilities: April 26, 2022



Photo 267: Wolcott Way Entrance Facilities: April 26, 2022



Photo 268: Wolcott Way Entrance Facilities: April 26, 2022



Photo 269: Wolcott Way Entrance Facilities: April 26, 2022



Photo 270: Wolcott Way Entrance Facilities: April 26, 2022



Photo 271: Wolcott Way Entrance Facilities: April 26, 2022



Photo 272: Wolcott Way Entrance Facilities: April 26, 2022



Photo 273: Wolcott Way Entrance Facilities: May 24, 2022



Photo 274: Wolcott Way Entrance Facilities: May 24, 2022



Photo 275: Wolcott Way Entrance Facilities: May 24, 2022



Photo 276: Wolcott Way Entrance Facilities: May 24, 2022



Photo 277: Wolcott Way Entrance Facilities: May 24, 2022



Photo 278: Wolcott Way Entrance Facilities: May 24, 2022



Photo 279: Wolcott Way Entrance Facilities: May 24, 2022



Photo 280: Wolcott Way Entrance Facilities: May 24, 2022



Photo 281: Wolcott Way Entrance Facilities: June 21, 2022



Photo 282: Wolcott Way Entrance Facilities: June 21, 2022



Photo 283: Wolcott Way Entrance Facilities: June 21, 2022



Photo 284: Wolcott Way Entrance Facilities: June 21, 2022



Photo 285: Wolcott Way Entrance Facilities: June 21, 2022



Photo 286: Maintenance and Admin Buildings: April 26, 2022



Photo 287: Maintenance and Admin Buildings: April 26, 2022



Photo 288: Site: April 26, 2022



Photo 289: Site: April 26, 2022



Photo 290: Site: April 26, 2022



Photo 291: Site: April 26, 2022



Photo 292: Site: April 26, 2022



Photo 293: Site: April 26, 2022



Photo 294: Site: April 26, 2022



Photo 295: Site: April 26, 2022



Photo 296: Site: April 26, 2022



Photo 297: Site: April 26, 2022



Photo 298: Site: April 26, 2022



Photo 299: Site: April 26, 2022



Photo 300: Site: April 26, 2022



Photo 301: Site: April 26, 2022



Photo 302: Site: April 26, 2022



Photo 303: Site: May 24, 2022



Photo 304: Site: May 24, 2022



Photo 305: Site: May 24, 2022



Photo 306: Site: May 24, 2022



Photo 307: Site: May 24, 2022



Photo 308: Site: May 24, 2022



Photo 309: Site: May 24, 2022



Photo 310: Site: May 24, 2022



Photo 311: Site: May 24, 2022



Photo 312: Site: May 24, 2022



Photo 313: Site: May 24, 2022



Photo 314: Site: May 24, 2022



Photo 315: Site: May 24, 2022



Photo 316: Site: May 24, 2022



Photo 317: Site: May 24, 2022



Photo 318: Site: May 24, 2022



Photo 319: Site: May 24, 2022



Photo 320: Site: May 24, 2022



Photo 321: Site: May 24, 2022



Photo 322: Site: May 24, 2022



Photo 323: Site: May 24, 2022



Photo 324: Site: May 24, 2022



Photo 325: Site: May 24, 2022



Photo 326: Site: May 24, 2022



Photo 327: Site: May 24, 2022



Photo 328: Site: May 24, 2022



Photo 329: Site: May 24, 2022



Photo 330: Site: May 24, 2022



Photo 331: Site: May 24, 2022



Photo 332: Site: May 24, 2022



Photo 333: Site: May 24, 2022



Photo 334: Site: May 24, 2022



Photo 335: Site: May 24, 2022



Photo 336: Site: May 24, 2022



Photo 337: Site: May 24, 2022



Photo 338: Site: May 24, 2022

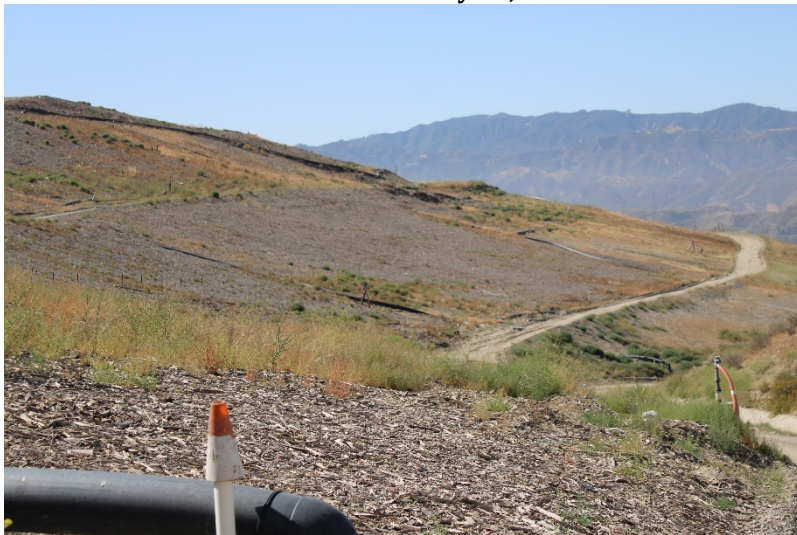


Photo 339: Site: May 24, 2022



Photo 340: Site: May 24, 2022



Photo 341: Site: May 24, 2022



Photo 342: Site: May 24, 2022



Photo 343: Site: May 24, 2022



Photo 344: Site: May 24, 2022



Photo 345: Site: May 24, 2022



Photo 346: Site: May 24, 2022



Photo 347: Site: May 24, 2022



Photo 348: Site: May 24, 2022



Photo 349: Site: May 24, 2022



Photo 350: Site: May 24, 2022



Photo 351: Site: May 24, 2022



Photo 352: Site: May 24, 2022



Photo 353: Site: June 21, 2022



Photo 354: Site: June 21, 2022



Photo 355: Site: June 21, 2022



Photo 356: Site: June 21, 2022



Photo 357: Site: June 21, 2022



Photo 358: Site: June 21, 2022



Photo 359: Site: June 21, 2022



Photo 360: Site: June 21, 2022



Photo 361: Site: June 21, 2022



Photo 362: Site: June 21, 2022



Photo 363: Site: June 21, 2022



Photo 364: Observe Litter Offsite: April 26, 2022



Photo 365: Observe Litter Offsite: April 26, 2022



Photo 366: Observe Litter Offsite: April 26, 2022



Photo 367: Observe Litter Offsite: April 26, 2022



Photo 368: Observe Litter Offsite: April 26, 2022



Photo 369: Observe Litter Offsite: April 26, 2022



Photo 370: Observe Litter Offsite: April 26, 2022



Photo 371: Observe Litter Offsite: April 26, 2022



Photo 372: Observe Litter Offsite: April 26, 2022



Photo 373: Observe Litter Offsite: April 26, 2022



Photo 374: Observe Litter Offsite: April 26, 2022



Photo 375: Observe Litter Offsite: May 24, 2022



Photo 376: Observe Litter Offsite: May 24, 2022



Photo 377: Observe Litter Offsite: May 24, 2022



Photo 378: Observe Litter Offsite: May 24, 2022



Photo 379: Observe Litter Offsite: May 24, 2022



Photo 380: Observe Litter Offsite: May 24, 2022



Photo 381: Observe Litter Offsite: May 24, 2022



Photo 382: Observe Litter Offsite: May 24, 2022



Photo 383: Observe Litter Offsite: May 24, 2022



Photo 384: Observe Litter Offsite: May 24, 2022



Photo 385: Observe Litter Offsite: May 24, 2022



Photo 386: Observe Litter Offsite: May 24, 2022



Photo 387: Observe Litter Offsite: May 24, 2022



Photo 388: Observe Litter Offsite: June 21, 2022



Photo 389: Observe Litter Offsite: June 21, 2022



Photo 390: Observe Litter Offsite: June 21, 2022



Photo 391: Observe Litter Offsite: June 21, 2022



Photo 392: Observe Litter Offsite: June 21, 2022



Photo 393: Observe Litter Offsite: June 21, 2022



Photo 394: Observe Litter Offsite: June 21, 2022



Photo 395: Observe Litter Offsite: June 21, 2022



Photo 396: Observe Litter Offsite: June 21, 2022



Photo 397: Observe Litter Offsite: June 21, 2022



Photo 398: Observe Litter Offsite: June 21, 2022



Photo 399: Cell 8 Construction: April 26, 2022



Photo 400: Cell 8 Construction: April 26, 2022



Photo 401: Cell 8 Construction: April 26, 2022



Photo 402: Cell 8 Construction: April 26, 2022



Photo 403: Cell 8 Construction: April 26, 2022



Photo 404 Cell 8 Construction: April 26, 2022



Photo 405: Cell 8 Construction: April 26, 2022



Photo 406: Cell 8 Construction: April 26, 2022



Photo 407: Cell 8 Construction: April 26, 2022



Photo 408: Cell 8 Construction: April 26, 2022



Photo 409: Cell 8 Construction: April 26, 2022



Photo 410: Cell 8 Construction: April 26, 2022



Photo 411: Cell 8 Construction: April 26, 2022



Photo 412: Cell 8 Construction: April 26, 2022



Photo 413: Cell 8 Construction: April 26, 2022



Photo 414: Cell 8 Construction: April 26, 2022



Photo 415: Cell 8 Construction: April 26, 2022



Photo 416: Cell 8 Construction: April 26, 2022



Photo 417: Cell 8 Construction: April 26, 2022



Photo 418: Cell 8 Construction: April 26, 2022



Photo 419: Cell 8 Construction: April 26, 2022



Photo 420: Cell 8 Construction: April 26, 2022



Photo 421: Cell 8 Construction: April 26, 2022



Photo 422: Cell 8 Construction: April 26, 2022



Photo 423: Cell 8 Construction: April 26, 2022



Photo 424: Cell 8 Construction: April 26, 2022



Photo 425: Cell 8 Construction: May 24, 2022



Photo 426: Cell 8 Construction: May 24, 2022



Photo 427: Cell 8 Construction: May 24, 2022



Photo 428: Cell 8 Construction: May 24, 2022



Photo 429: Cell 8 Construction: May 24, 2022



Photo 430: Cell 8 Construction: May 24, 2022



Photo 431: Cell 8 Construction: May 24, 2022



Photo 432: Cell 8 Construction: May 24, 2022



Photo 433: Cell 8 Construction: May 24, 2022

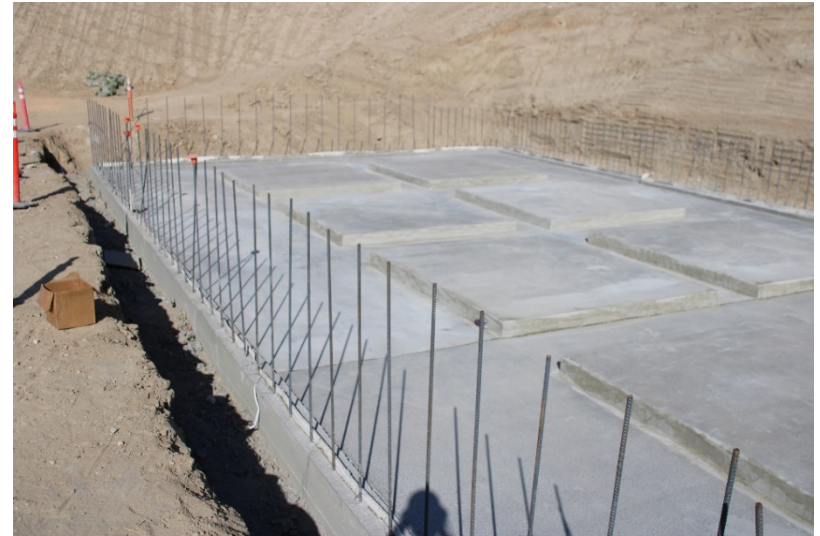


Photo 434: Cell 8 Construction: May 24, 2022



Photo 435: Cell 8 Construction: May 24, 2022



Photo 436: Cell 8 Construction: May 24, 2022



Photo 437: Cell 8 Construction: May 24, 2022



Photo 438: Cell 8 Construction: May 24, 2022



Photo 439: Cell 8 Construction: May 24, 2022



Photo 440: Cell 8 Construction: May 24, 2022



Photo 441: Cell 8 Construction: May 24, 2022



Photo 442: Cell 8 Construction: May 24, 2022



Photo 443: Cell 8 Construction: May 24, 2022



Photo 444: Cell 8 Construction: May 24, 2022



Photo 445: Cell 8 Construction: May 24, 2022



Photo 446: Cell 8 Construction: May 24, 2022



Photo 447: Cell 8 Construction: May 24, 2022



Photo 448: Cell 8 Construction: May 24, 2022



Photo 449: Cell 8 Construction: May 24, 2022



Photo 450: Site: Cell 8 Construction: May 24, 2022



Photo 451: Cell 8 Construction: May 24, 2022



Photo 452: Cell 8 Construction: May 24, 2022



Photo 453: Cell 8 Construction: May 24, 2022



Photo 454: Cell 8 Construction: May 24, 2022



Photo 455: Cell 8 Construction: May 24, 2022



Photo 456: Cell 8 Construction: May 24, 2022



Photo 457: Cell 8 Construction: May 24, 2022



Photo 458: Cell 8 Construction: May 24, 2022



Photo 459: Cell 8 Construction: May 24, 2022



Photo 460: Cell 8 Construction: May 24, 2022



Photo 461: Cell 8 Construction: May 24, 2022



Photo 462: Cell 8 Construction: May 24, 2022



Photo 463: Cell 8 Construction: May 24, 2022



Photo 464: Cell 8 Construction: May 24, 2022



Photo 465: Cell 8 Construction: May 24, 2022



Photo 466: Cell 8 Construction: May 24, 2022



Photo 467: Cell 8 Construction: May 24, 2022



Photo 468: Cell 8 Construction: May 24, 2022



Photo 469: Cell 8 Construction: May 24, 2022



Photo 470: Cell 8 Construction: May 24, 2022



Photo 471: Cell 8 Construction: May 24, 2022



Photo 472: Cell 8 Construction: May 24, 2022



Photo 473: Cell 8 Construction: May 24, 2022



Photo 474: Cell 8 Construction: May 24, 2022



Photo 475: Cell 8 Construction: May 24, 2022



Photo 476: Cell 8 Construction: May 24, 2022



Photo 477: Cell 8 Construction: May 24, 2022



Photo 478: Cell 8 Construction: May 24, 2022



Photo 479: Cell 8 Construction: May 24, 2022



Photo 480: Cell 8 Construction: June 21, 2022



Photo 481: Cell 8 Construction: June 21, 2022



Photo 482: Cell 8 Construction: June 21, 2022



Photo 483: Cell 8 Construction: June 21, 2022



Photo 484: Cell 8 Construction: June 21, 2022



Photo 485: Cell 8 Construction: June 21, 2022



Photo 486: Cell 8 Construction: June 21, 2022



Photo 487: Cell 8 Construction: June 21, 2022



Photo 488: Cell 8 Construction: June 21, 2022



Photo 489: Cell 8 Construction: June 21, 2022



Photo 490: Cell 8 Construction: June 21, 2022



Photo 491: Cell 8 Construction: June 21, 2022



Photo 492: Cell 8 Construction: June 21, 2022



Photo 493: Cell 8 Construction: June 21, 2022



Photo 494: Cell 8 Construction: June 21, 2022



Photo 495: Cell 8 Construction: June 21, 2022



Photo 496: Cell 8 Construction: June 21, 2022



Photo 497: Cell 8 Construction: June 21, 2022



Photo 498: Cell 8 Construction: June 21, 2022



Photo 499: Cell 8 Construction: June 21, 2022



Photo 500: Cell 8 Construction: June 21, 2022



Photo 501: Cell 8 Construction: June 21, 2022



Photo 502: Cell 8 Construction: June 21, 2022



Photo 503: Cell 8 Construction: June 21, 2022

Appendix II

Quarterly Site Visits: Site Visit Attendees by Date of Site Visit/ Mitigation Monitoring Site Reports

Chiquita Canyon Landfill Site Monitoring Procedures for April, May and June 2022

To follow the CDC guidelines for COVID-19 health protocols and to comply with State, County and City restrictions, UltraSystems is extending the monitoring of the landfill to occur on one day each month during this reporting period; continue practicing physical distancing; and wearing a protective face covering.

UltraSystems will send a single engineer to perform a fact-finding visit in a single vehicle. The engineer will sign-in by phone with landfill staff when arriving on site. The engineer will start at the office parking and drive around the site, taking pictures of the current landfill conditions, construction activities, waste disposal, gas recovery and flaring. The engineer will not leave the immediate area of the vehicle or have personal contact with any landfill staff or waste disposal customers. Photo locations will include:

1. Current disposal and inactive areas
2. Onsite areas with windblown litter
3. Perimeter drainage system
4. Landfill slopes
5. Closed Canyon B and Primary Canyon landfills
6. Northeast sediment basin
7. Future cells 7, 9 and 10 areas
8. Cell 7 graded and soil stockpile areas
9. Gas-to-energy plant
10. Gas flares
11. Wolcott Way entrance facilities activities
12. Wolcott Way sediment basin and mitigation pond areas
13. Cell 8 development activities
14. South catch basin and terminal basin
15. Maintenance and administration areas
16. General site areas
17. Offsite general conditions

After performing the monitoring activities, the UltraSystems engineer will notify Waste Connections' staff that they are signing out and leaving the site.

All photos will be emailed to Waste Connections' staff, Los Angeles County Regional Planning and Los Angeles County Department of Public Works. A post-site visit monitoring conference call will follow after reviewing the photos and engineer's observation notes.

April 2022

Chiquita Canyon Landfill Meeting Log
April 26, 2022, Site Visit
May 10, 2022 Conference Call

Site Visit was performed by Jim Aidukas and Mike Lindsay (UltraSystems)
Remote Site monitoring conference call with Steve Cassulo and Nicole Ward (Waste Connections)

Participants:

Edgar De La Torre and Ai-Viet Huynh; LACDRP
James Aidukas and Mike Lindsay; UltraSystems

Discussion:

To follow CDC guidelines for COVID-19 health protocols, UltraSystems sent a single person to perform a site visit to photograph site conditions and record site observations of the landfill. Additional staff with special education and skills, like biologists, archeologists, or engineers also visit when needed; all staff drive in separate vehicles. After reviewing the photos and observation record, a post-site visit conference call was held to discuss Chiquita Canyon Landfill operations and the status of construction, maintenance and compliance. We asked questions regarding health measures, site operations, weather impacts, landfill gas and liquids control, construction activities and mitigation measures status. We received comments and updates from Waste Connections staff concerning discussion items delineated on the attached conference call agenda as follows:

Discussion Topics After Reviewing Site Visit Photos for April 26, 2022

1. (Photos 2893-2897, 2899-2903) The monitor drove the area around the landfill and neighborhood from 7:00 to 8:00 a.m. There were no landfill odors detected offsite. A minor amount of windblown litter from Highway 126 was observed along the Wolcott Way fencing. There was no illegal dumping or windblown litter on Franklin Road. There was no illegal dumping observed on the shoulders of Chiquito Canyon Road. There was no windblown litter observed that came from the landfill on Chiquito Canyon Road.
 - o Steve Cassulo acknowledged the statement.
2. (Photo 2893) The monitoring station at Wolcott Way was observed. There were no concerns noted.
 - o Steve Cassulo acknowledged the statement.
3. (Photos 0473-0474, 0566-0575, 2904-2908) The two entrance basins (terminal and catch basins) were observed. Both had standing water with windblown litter in them.
 - a.) Are these being pumped for onsite water uses?
 - o Nicole Ward stated that the entrance basins are not yet being used for onsite water uses.
 - b.) When will sediment and litter be removed?
 - o Nicole Ward stated that it is not safe enough to send anyone there to remove it.
 - c.) When are the improvements to these basins scheduled to occur?

- Nicole Ward stated that the improvements to the basins are scheduled for August and September of 2022.
4. (Photos 0462-0476, 0493-0498, 2909-2914) The grading for Cell 8 and the new access road was observed. There were no concerns noted.
- a.) Which environmental monitors were monitoring the excavation and grading?
 - Nicole Ward stated that they had bio, paleo and Native American Tribe monitors monitoring the excavation and grading.
5. (Photos 0504-0512, 0519-0531, 2915-2940) The active disposal area was observed. Waste was being placed in Cell 6. Odor-neutralizing foam was being used on odorous loads. Orchard fans were operating. There were no waste odors leaving the immediate disposal area. Windblown litter was seen in many areas of the landfill. It was being controlled from leaving the landfill fence perimeter.
- a.) How often and under what conditions is the foam odor-neutralizer used?
 - Nicole Ward stated that the foam odor-neutralizer is used when it gets warmer in temperature, when wind speed is not too high, and when the wind direction is not favorable.
 - b.) Has litter picking been increased to catch up on the amount of litter that the high winds spread on the site?
 - Nicole Ward stated that they were able to get more crews of temporary laborers and they have been picking up the litter.
6. (Photos 0532-0537, 2941-2943) The northeast sediment basin was observed. The basin and adjacent areas were being maintained. There was some water in the basin. No toads were observed.
- Steve Cassulo stated that they plan on draining water from the basin as needed and as they can, and they typically start around the fourth of July.
7. (Photos 0552-0559, 2899-2902) The future facilities site areas at Wolcott Way were observed. What are the current schedules for construction?
- a.) Mass grading and site fill soil placement
 - Steve Cassulo stated that the mass grading portion is not yet fully permitted.
 - b.) Wolcott Way and Highway 126 road improvements
 - Steve Cassulo stated that they have the lighting and widening plans on Wolcott Way approved. The Highway 126 improvements are closer to being approved by Caltrans.
 - c.) Drainage improvements including basins for sediment and toad mitigation
 - Steve Cassulo stated that they have not done anything in that area yet, and they are relocating any toads that are found to the back basin which is the temporary toad pond until they can get the permits for the Wolcott parcel. Then, the new toad basin and sediment basin will be put in place along with the new entranceway.
 - d.) New entrance road
 - Steve Cassulo stated that the new entrance road has not been approved yet, and they are still in negotiations with FivePoint and the County.
 - e.) Buildings and scales construction
 - Steve Cassulo stated that the buildings and scales construction will begin next year.

In summary, the site was operating with no operational concerns that were observed and no odors were detected leaving the site. Windblown litter was an onsite issue due to frequent high-wind days, and flagging debris was in the cover mulch.

Site Operations Questions

1. Were there any notices of violation (NOV) issued in April?
 - Nicole Ward stated that they received an NOV for paperwork from a search inspection that was done due to labels that were missing on a drum containing used oil.
2. Were there any operational complaints in April?
 - Nicole Ward stated that there were no operational complaints in April.

Site Visit Comments

- Mike Lindsay made reviewed statements made in the MMSRF site report.

The conference call concluded.

Chiquita Canyon Landfill April 26, 2022, Site Visit

Conference Call Discussion Items

Discussion Topics After Reviewing Site Visit Photos for April 26, 2022

1. (Photos 2893-2897, 2899-2903) The monitor drove the area around the landfill and neighborhood from 7:00 to 8:00 a.m. There were no landfill odors detected offsite. A minor amount of windblown litter from Highway 126 was observed along the Wolcott Way fencing. There was no illegal dumping or windblown litter on Franklin Road. There was no illegal dumping observed on the shoulders of Chiquito Canyon Road. There was no windblown litter observed that came from the landfill on Chiquito Canyon Road.
2. (Photo 2893) The monitoring station at Wolcott Way was observed. There were no concerns noted.
3. (Photos 0473-0474, 0566-0575, 2904-2908) The two entrance basins (terminal and catch basins) were observed. Both had standing water with windblown litter in them.
 - a.) Are these being pumped for site water uses?
 - b.) When will sediment and litter be removed?
 - c.) When are the improvements to these basins scheduled to occur?
4. (Photos 0462-0476, 0493-0498, 2909-2914) The grading for Cell 8 and the new access road was observed. There were no concerns noted.
 - a.) Which environmental monitors were monitoring the excavation and grading?
5. (Photos 0504-0512, 0519-0531, 2915-2940) The active disposal area was observed. Waste was being placed in Cell 6. Odor-neutralizing foam was being used on odorous loads. Orchard fans were operating. There were no waste odors leaving the immediate disposal area. Windblown litter was seen in many areas of the landfill. It was being controlled from leaving the landfill fence perimeter.
 - a.) How often and under what conditions is the foam odor-neutralizer used?
 - b.) What is the status of SCAQMD permits for more orchard fans?
 - c.) Has litter picking been increased to catch up on the amount of litter that the high winds spread on the site?
6. (Photos 0532-0537, 2941-2943) The northeast sediment basin was observed. The basin and adjacent areas were being maintained. There was some water in the basin. No toads were observed.

7. (Photos 0552-0559, 2899-2902) The future facilities site areas at Wolcott Way were observed. What are the current schedules for construction?
- a.) Mass grading and site fill soil placement
 - b.) Wolcott Way and Highway 126 road improvements
 - c.) Drainage improvements including basins for sediment and toad mitigation
 - d.) New entrance road
 - e.) Buildings and scales construction

In summary, the site was operating with no operational concerns that were observed and no odors were detected leaving the site. Windblown litter was an onsite issue due to frequent high-wind days, and flagging debris was in the cover mulch.

Site Operations Questions

1. Were there any notices of violation (NOV) issued in April?
2. Were there any operational complaints in April?

Site Visit Comments

To be discussed during the conference call.



IMG_0450



IMG_0451



IMG_0452



IMG_0454



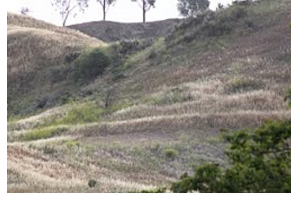
IMG_0455



IMG_0456



IMG_0457



IMG_0458



IMG_0459



IMG_0460



IMG_0461



IMG_0462



IMG_0463



IMG_0464



IMG_0465



IMG_0466



IMG_0467



IMG_0468



IMG_0469



IMG_0470



IMG_0471



IMG_0472



IMG_0473



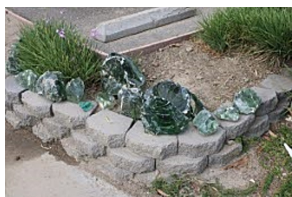
IMG_0474



IMG_0475



IMG_0476



IMG_0477



IMG_0478



IMG_0480



IMG_0481



IMG_0482



IMG_0483



IMG_0484



IMG_0485



IMG_0486



IMG_0487



IMG_0488



IMG_0489



IMG_0490



IMG_0491



IMG_0492



IMG_0493



IMG_0494



IMG_0495



IMG_0496



IMG_0497



IMG_0498



IMG_0499



IMG_0500



IMG_0501



IMG_0502



IMG_0503



IMG_0504



IMG_0505



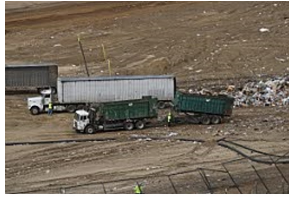
IMG_0506



IMG_0507



IMG_0508



IMG_0509



IMG_0510



IMG_0511



IMG_0512



IMG_0513



IMG_0514



IMG_0515



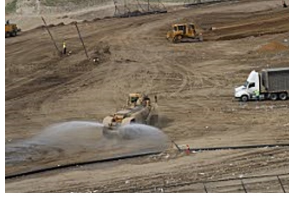
IMG_0516



IMG_0517



IMG_0518



IMG_0519



IMG_0520



IMG_0521



IMG_0522



IMG_0523



IMG_0524



IMG_0525



IMG_0526



IMG_0527



IMG_0528



IMG_0529



IMG_0530



IMG_0531



IMG_0532



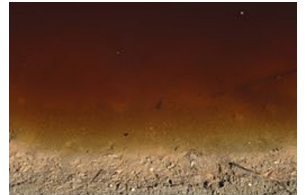
IMG_0533



IMG_0534



IMG_0535



IMG_0536



IMG_0537



IMG_0538



IMG_0539



IMG_0540



IMG_0541



IMG_0542



IMG_0543



IMG_0544



IMG_0545



IMG_0546



IMG_0547



IMG_0548



IMG_0549



IMG_0550



IMG_0551



IMG_0552



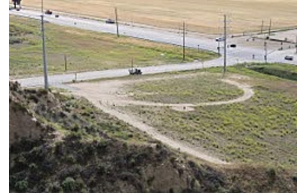
IMG_0553



IMG_0554



IMG_0555



IMG_0556



IMG_0557



IMG_0558



IMG_0559



IMG_0560



IMG_0561



IMG_0562



IMG_0563



IMG_0564



IMG_0565



IMG_0566



IMG_0567



IMG_0568



IMG_0569



IMG_0570



IMG_0571



IMG_0572



IMG_0573



IMG_0574



IMG_0575



IMG_0576

**CHIQUITA CANYON LANDFILL
MITIGATION MONITORING SITE REPORT**

Monitor: James T. Aidukas	Page: 1 of 1
Discipline: Project Manager	Date: 4-26-2022

Site Conditions: 55–80°F, 0–10 mph winds

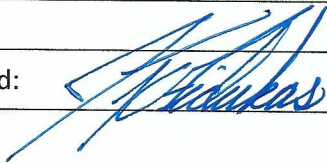
SITE LOG

Drove the area around the site and the adjacent Val Verde neighborhood from 7:00 to 7:45 a.m. There were no landfill odors detected outside of the landfill perimeter. There was no landfill litter seen outside of the landfill limits. There was a minor amount of litter on the Highway 126 on the Wolcott Way future landfill facilities site and its fence. There was no illegal dumping on Franklin Parkway or Chiquito Canyon Roads. The Franklin Parkway air monitoring station was operating with no concerns noted. There was no construction activity occurring at the Wolcott Way future facilities area. Met with Mike Lindsay and Amir Ayati (UltraSystems), Edgar De La Torre and Ai-Viet Huyth (LACDRP), and Steve Cassulo and Nicole Ward (Waste Connections). We then proceeded to monitor the site in separate vehicles and observed the following:

- The terminal basin had 2-3 feet of standing water from the prior rain events. A pump was stationed on the western access road for pumping out the water. There was windblown litter in and on the dirt sides of the basin.
- The catch basin had a minor amount of standing water. Windblown litter was in the wet soil.
- A new portion of the catch basin was constructed at the toe of Cell 8A.
- The final toe berm was being constructed in the Cell 8A area. The slopes for the cell were being reconstructed with compacted soil. A new access road for disposal operations was being constructed. The foundation's forming for the liquids handling tanks were being constructed.
- The extension to the westside box drainage channel was under construction.
- The excavation being done in the Cell 8A native soil area was being observed by a paleontological monitor. An archeological monitor was onsite when excavation started in the native soil areas.
- The upper portion of Cell 6 was active accepting waste. Orchard fans were operating. A white foam odor neutralizer was being used in the tipping area. Fresh waste odors were being controlled to the active area.
- Additional wet weather rubble was being stockpiled on the top deck of Cell 5.
- A small homeowner area was observed. A tarp was being used for cover of the prior day's waste. There were no odors being emitted and no concerns were noted.
- The northeast sediment basin had standing water.
- Excavation work was being done in the northeast area of the future Cell 7.
- The primary canyon top deck was being used for clay, liner, and cover soil stockpiled. Cell 8 construction soil was being used for daily cover.
- Five air quality monitoring detection systems were being stored at the office area.

FURTHER REVIEW NEEDED

Signed:



**CHIQUITA CANYON LANDFILL
MITIGATION MONITORING SITE REPORT**

Monitor: Mike Lindsay	Page: 1 of 2
Discipline: Environmental Engineer	Date: 04-26-2022 Tuesday
Site Conditions: Mostly Cloudy, 54–82 °F, S 2–12 mph, 66% RH, 27 AQI	
SITE LOG	
<ol style="list-style-type: none"> 1. Monitor drove Chiquito Canyon Road and observed no wind-blown litter along slopes that are adjacent to the landfill’s perimeter fencing. 2. Monitor drove through the Val Verde neighborhood; no odors are present at 7:45 am. 3. Checked into office with Steve Cassulo (Waste Connections). 4. Met with Jim Aidukas and Amir Ayati (UltraSystems), and Edgar De La Torre and Ai-Viet Huynh (LACDRP). We followed Steve Cassulo and Nicole Ward (Waste Connections) to site locations in separate vehicles. 5. Water trucks are applying water throughout site for dust control. 6. Observed excavation work for the new Cell 8 construction project, including rippers, eight scrapers and dozers along the western slopes, removing the east-facing hillside. 7. Paleo monitors are present for the excavation work occurring in undisturbed, native soil. No archaeo or paleo resources have been found during Cell 8 excavation. However, large chunks of green glass are being found, and stored near the admin facility. 8. A new concrete pad for the leachate tanks is being formed. 9. A seep discovered by a small landslide has been directed into a new French drain. 10. Observed the overall construction activities from the top of primary canyon. 11. Observed the working area at Cell 6 from the top deck, including three tippers at the north end of cell and moving floor trucks to the south, traffic controllers, orchard fans and water trucks to control dust and odors. ADC is 90% covered with new trash at 9:45 am. 12. A tank truck is spraying white-colored odor-neutralizing foam onto fresh trash for odor control. 13. Bird abatement is active. 14. The truck wash station is in good order. 15. The closed canyon B area is in good order, including condensate storage tank. 16. The northeast sediment basin is in good order, with water level decreasing due to evaporation. 17. Some black-colored tadpoles about one centimeter long are still present in basin, while no frogs were observed. 18. The large drainage culvert northeast of the basin is mostly clear of debris and vegetation. 19. The closed primary canyon top deck is in good order, with clay, orchard fans and liner material being stored at the northwest end. Stockpiled soil is still being used for daily cover material. 20. The Wolcott Way entrance area is in good order, as viewed from high on the east perimeter ridge below primary canyon. No new construction activity was observed. 21. Street sweepers are cleaning the Wolcott Way area and along the 126 highway. 22. The air quality monitoring station above the Wolcott Way project area is in good order. 23. Flare 100 is operating at 3525 scfm, 1507 °F. Gas sample measured at 38 % Vol. CH4, 1.6 % Vol. O2, 33 ppm H2S and 180 ppm CO. Inlet temperature is at 106 °F. 24. Flare 150 is operating at 3530 scfm, 1551 °F. Inlet temperature is at 110 °F. 25. The breakroom area is in good order. 26. Traffic spotters are onsite to control traffic. 	

27. The scales are in good order, with no odors present.
28. The south terminal basin and catch basin are in good order.
29. Five air quality monitoring stations are being stored behind the admin facility, while permits for installation are pending approval.
30. Checked out of site with Steve Cassulo.

FURTHER REVIEW NEEDED

1. Remove wind-blown litter from the landfill overall.

Signed: *Michael W. Lindsay*

May 2022

Chiquita Canyon Landfill Meeting Log
May 24, 2022 Site Visit
May 31, 2022 Conference Call

Site Visit was performed by Jim Aidukas and Mike Lindsay (UltraSystems)
Remote Site monitoring conference call with Steve Cassulo (Waste Connections)

Participants:

Edgar De La Torre and Ai-Viet Huynh, LACDRP
James Aidukas and Mike Lindsay; UltraSystems

Discussion:

To follow CDC guidelines for COVID-19 health protocols, UltraSystems sent a single person to perform a site visit to photograph site conditions and record site observations of the landfill. Additional staff with special education and skills, like biologists, archeologists, or engineers also visit when needed; all staff drive in separate vehicles. After reviewing the photos and observation record, a post-site visit conference call was held to discuss Chiquita Canyon Landfill operations and the status of construction, maintenance and compliance. We asked questions regarding health measures, site operations, weather impacts, landfill gas and liquids control, construction activities and mitigation measures status. We received comments and updates from Waste Connections staff concerning discussion items delineated on the attached conference call agenda as follows:

Discussion Topics After Reviewing Site Visit Photos for May 24, 2022

1. (Photos 0802-0814, 3227-3231, 3237-3240, 3293, 3295) The monitors drove the area around the landfill and neighborhood from 7:00 – 8:00 a.m. There were no landfill odors detected offsite. A minor amount of windblown litter from Highway 126 was observed along the Wolcott Way fencing. There was illegal dumping on the shoulders of Franklin Parkway. There was windblown litter near Highway 126 observed on the shoulders of Chiquito Canyon Road. There was windblown litter observed that came from the landfill on the exterior western slope near the top of the landfill ridgeline facing Chiquito Canyon Road.
 - a.) Has the LCDPW road division been made aware of the frequency of illegal dumping?
 - o Steve Cassulo acknowledged the issue.
 - b.) Will they consider posting no dumping signs warning of fines and criminal offenses?
 - o Steve Cassulo stated that they have not considered posting no dumping signs yet.
2. (Photos 3243-3246) The highway 126 and Chiquito Canyon Road intersection was observed.
 - a.) When is the traffic system lights scheduled to be operational?
 - o Steve Cassulo stated that he does not know when the traffic system lights are scheduled to be operational.
3. (Photos 3241, 3247, 3248) Graffiti was observed at the Highway 126 and Chiquito Canyon Road intersection.

- a.) Who is responsible to remove the graffiti?
 - o Steve Cassulo stated that he has not had a chance to go out there and see the graffiti, so he has not been able to report it to Caltrans or Public Works.
4. (Photos 0815-0818, 3249-3257, 3265) The catch and terminal basins were observed.
 - a.) When will the terminal basin's standing water be pumped out?
 - o Steve Cassulo stated that the water in the first basin has been pumped out as much as they could.
 - b.) When will the terminal basin's improvements be made?
 - o Steve Cassulo stated that the terminal basin improvements should be upgraded in September of this year. They would have Sukut finish and complete the upgrades before they leave the property.
5. (Photos 0855-0867, 0894, 3260-3264, 3266-3270, 3285, 3297, 3299, 3301, 3303, 3306, 3308, 3310) The grading in the southern area of Cell 8, the extension of perimeter box drainage channel, and the construction of the final toe berm were observed. There were no concerns noted.
 - a.) When is the grading scheduled to be completed?
 - o Steve Cassulo stated that the grading is scheduled to be completed near end of June.
 - b.) When is the liner's completion scheduled?
 - o Steve Cassulo stated that the liner should be completed around July 4th.
6. (Photos 0821-0833, 3270-3273, 3289) The foundations for the landfill's liquids handling storage were observed.
 - a.) When will the storage vessels start to be moved?
 - o Steve Cassulo stated that they should be relocated by late August.
 - b.) How many vessels will need to be moved before you can operate at the new location?
 - o Steve Cassulo stated that they have several meetings coming up in the next few weeks to discuss the actual process of moving the liquids handling storage vessels.
7. (Photos 0846-0847, 3274, 3291) The western air quality monitoring station was observed.
 - a.) Are the solar panels being cleaned? If so, how often?
 - o Steve Cassulo stated that the solar panels are cleaned monthly.
8. (Photos 3275, 3277, 3279, 3281, 3283) The new access road to the top deck area of Cell 6 and Cell 5 was observed. There were no concerns with the access road construction (i.e., road slope and route).
 - a.) The access road section from the scales to near the gas flares facility had dust clouds being generated from truck traffic. Can watering the roads more often or use of a road tackifier remedy the dust generation?
 - o Steve Cassulo stated that the truck that was supposed to water the road had technical issues that morning and a rental truck arrived later that afternoon to complete the task.

9. (Photo 3312-3316) The Cell 5 western drainage channel and slopes were observed. The channels were in the process of being cleaned. The slopes were well maintained with the small palm trees growing from the mulch removed.
 - a.) Will the vegetation growing in and adjacent to the concrete channel be removed?
 - o Steve Cassulo stated that he will make a note to remove the weeds when his team reaches that area.
10. (Photos 0929-0934, 3225, 3327, 3328, 3330, 3332) The homeowner drop-off area was observed.
 - a.) How often is the tarp moved and waste covered with dirt?
 - o Steve Cassulo stated that they tarp it every night Monday through Friday and then fully cover it with dirt on Saturday.
11. (Photos 0943-0963, 3334, 3336, 3338, 3340, 3342, 3344, 3346, 3347, 3351, 3352, 3356, 3358) The active disposal area on the Cell 6 deck was observed. There were no concerns noted.
 - o Steve Cassulo acknowledged the statement.
12. (Photos 0987-1002, 3360, 3362, 3364) The northeast basin was observed. Small toads were observed in the wet sediment of the banks.
 - a.) How are mosquitos being controlled?
 - o Steve Cassulo stated that they do not have a mosquito issue with either one their basins.
13. (Photos 1003-1015, 3366, 3368, 3370, 3372) The future Cell 7 area was observed. The northern area of the future cell area was graded.
 - a.) Is Cell 7 also being constructed?
 - o Steve Cassulo stated that the grading was done for additional cover soil due to delays with Cell 8.

In summary, the site was operating with no operational concerns that were observed and no odors were detected leaving the site.

Site Operations Questions

1. Were there any notices of violation (NOV) issued in May?
 - Steve Cassulo stated that there were no NOVs issued in May.
2. Were there any operational complaints in May?
 - Steve Cassulo stated that there were no operational complaints in May.

Site Visit Comments

- Mike Lindsay reviewed comments made in the MMSRF site report.

The conference call concluded.

Chiquita Canyon Landfill May 24, 2022, Site Visit
Conference Call Discussion Items

Discussion Topics After Reviewing Site Visit Photos for May 24, 2022

1. (Photos 0802-0814, 3227-3231, 3237-3240, 3293, 3295) The monitors drove the area around the landfill and neighborhood from 7:00 – 8:00 a.m. There were no landfill odors detected offsite. A minor amount of windblown litter from Highway 126 was observed along the Wolcott Way fencing. There was illegal dumping on the shoulders of Franklin Parkway. There was windblown litter near Highway 126 observed on the shoulders of Chiquito Canyon Road. There was windblown litter observed that came from the landfill on the exterior western slope near the top of the landfill ridgeline facing Chiquito Canyon Road.
 - a.) Has the LCDPW road division been made aware of the frequency of illegal dumping?
 - b.) Will they consider posting no dumping signs warning of fines and criminal offenses?
2. (Photos 3243-3246) The highway 126 and Chiquito Canyon Road intersection was observed.
 - a.) When is the traffic system lights scheduled to be operational?
3. (Photos 3241, 3247, 3248) Graffiti was observed at the Highway 126 and Chiquito Canyon Road intersection.
 - a.) Who is responsible to remove the graffiti?
4. (Photos 0815-0818, 3249-3257, 3265) The catch and terminal basins were observed.
 - a.) When will the terminal basin's standing water be pumped out?
 - b.) When will the terminal basin's improvements be made?
 - c.) What is planned for the catch basin? Will it be deeper or wider?
5. (Photos 0855-0867, 0894, 3260-3264, 3266-3270, 3285, 3297, 3299, 3301, 3303, 3306, 3308, 3310) The grading in the southern area of Cell 8, the extension of perimeter box drainage channel, and the construction of the final toe berm were observed. There were no concerns noted.
 - a.) When is the grading scheduled to be completed?
 - b.) When is the liner's completion scheduled?
6. (Photos 0821-0833, 3270-3273, 3289) The foundations for the landfill's liquids handling storage were observed.
 - a.) When will the storage vessels start to be moved?
 - b.) How many vessels will need to be moved before you can operate at the new location?
7. (Photos 0846-0847, 3274, 3291) The western air quality monitoring station was observed.
 - a.) Are the solar panels being cleaned? If so, how often?

8. (Photos 3275, 3277, 3279, 3281, 3283) The new access road to the top deck area of Cell 6 and Cell 5 was observed. There were no concerns with the access road construction (i.e., road slope and route).
 - a.) The access road section from the scales to near the gas flares facility had dust clouds being generated from truck traffic. Can watering the roads more often or use of a road tackifier remedy the dust generation?
9. (Photo 3312-3316) The Cell 5 western drainage channel and slopes were observed. The channels were in the process of being cleaned. The slopes were well maintained with the small palm trees growing from the mulch removed.
 - a.) Will the vegetation growing in and adjacent to the concrete channel be removed?
10. (Photos 0929-0934, 3225, 3327, 3328, 3330, 3332) The homeowner drop-off area was observed.
 - a.) How often is the tarp moved and waste covered with dirt?
11. (Photos 0943-0963, 3334, 3336, 3338, 3340, 3342, 3344, 3346, 3347, 3351, 3352, 3356, 3358) The active disposal area on the Cell 6 deck was observed. There were no concerns noted.
12. (Photos 0987-1002, 3360, 3362, 3364) The northeast basin was observed. Small toads were observed in the wet sediment of the banks.
 - a.) How are mosquitos being controlled?
13. (Photos 1003-1015, 3366, 3368, 3370, 3372) The future Cell 7 area was observed. The northern area of the future cell area was graded.
 - a.) Is Cell 7 also being constructed?

In summary, the site was operating with no operational concerns that were observed and no odors were detected leaving the site.

Site Operations Questions

1. Were there any notices of violation (NOV) issued in May?
2. Were there any operational complaints in May?

Site Visit Comments

To be discussed during the conference call.



IMG_0804



IMG_0805



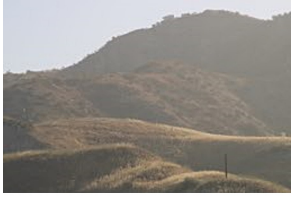
IMG_0806



IMG_0807



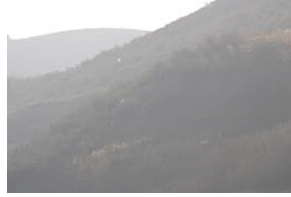
IMG_0808



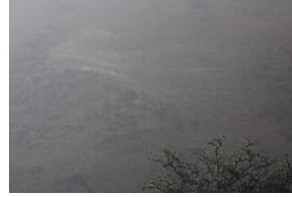
IMG_0809



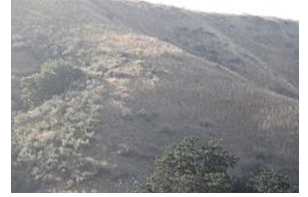
IMG_0810



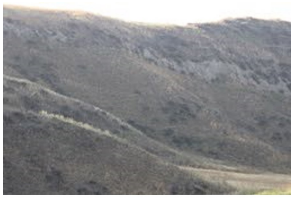
IMG_0811



IMG_0812



IMG_0813



IMG_0814



IMG_0815



IMG_0816



IMG_0817



IMG_0818



IMG_0819



IMG_0820



IMG_0821



IMG_0822



IMG_0823



IMG_0824



IMG_0825



IMG_0826



IMG_0827



IMG_0828



IMG_0829



IMG_0830



IMG_0831



IMG_0832



IMG_0833



IMG_0834



IMG_0835



IMG_0836



IMG_0837



IMG_0838



IMG_0839



IMG_0840



IMG_0841



IMG_0842



IMG_0843



IMG_0844



IMG_0845



IMG_0846



IMG_0847



IMG_0848



IMG_0849



IMG_0850



IMG_0851



IMG_0852



IMG_0853



IMG_0854



IMG_0855



IMG_0856



IMG_0857



IMG_0858



IMG_0859



IMG_0860



IMG_0861



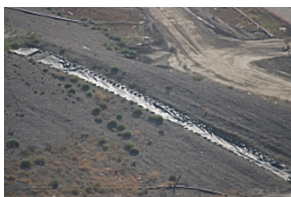
IMG_0862



IMG_0863



IMG_0864



IMG_0865



IMG_0866



IMG_0867



IMG_0868



IMG_0869



IMG_0870



IMG_0871



IMG_0872



IMG_0873



IMG_0874



IMG_0875



IMG_0876



IMG_0877



IMG_0878



IMG_0879



IMG_0880



IMG_0881



IMG_0882



IMG_0883



IMG_0884



IMG_0885



IMG_0886



IMG_0887



IMG_0888



IMG_0889



IMG_0890



IMG_0891



IMG_0892



IMG_0893



IMG_0894



IMG_0895



IMG_0896



IMG_0897



IMG_0898



IMG_0899



IMG_0900



IMG_0901



IMG_0902



IMG_0903



IMG_0904



IMG_0905



IMG_0906



IMG_0907



IMG_0908



IMG_0909



IMG_0910



IMG_0911



IMG_0912



IMG_0913



IMG_0914



IMG_0915



IMG_0916



IMG_0917



IMG_0918



IMG_0919



IMG_0920



IMG_0921



IMG_0922



IMG_0923



IMG_0924



IMG_0925



IMG_0926



IMG_0927



IMG_0928



IMG_0929



IMG_0930



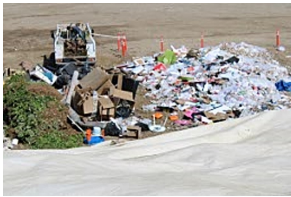
IMG_0931



IMG_0932



IMG_0933



IMG_0934



IMG_0935



IMG_0936



IMG_0937



IMG_0938



IMG_0939



IMG_0940



IMG_0941



IMG_0942



IMG_0943



IMG_0944



IMG_0945



IMG_0946



IMG_0947



IMG_0948



IMG_0949



IMG_0950



IMG_0951



IMG_0952



IMG_0953



IMG_0954



IMG_0955



IMG_0956



IMG_0957



IMG_0958



IMG_0959



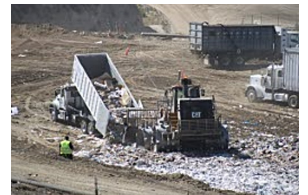
IMG_0960



IMG_0961



IMG_0962



IMG_0963



IMG_0964



IMG_0965



IMG_0966



IMG_0967



IMG_0968



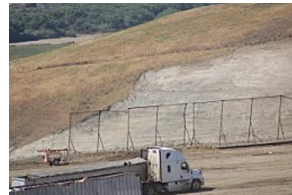
IMG_0969



IMG_0970



IMG_0971



IMG_0972



IMG_0973



IMG_0974



IMG_0975



IMG_0976



IMG_0977



IMG_0978



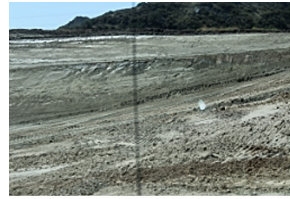
IMG_0979



IMG_0980



IMG_0981



IMG_0982



IMG_0983



IMG_0984



IMG_0985



IMG_0986



IMG_0987



IMG_0988



IMG_0989



IMG_0990



IMG_0991



IMG_0992



IMG_0993



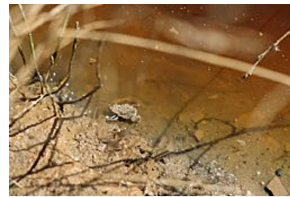
IMG_0994



IMG_0995



IMG_0998



IMG_0999



IMG_1000



IMG_1001



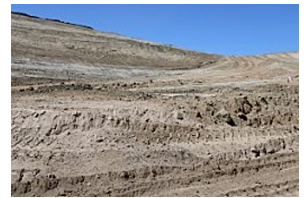
IMG_1002



IMG_1003



IMG_1004



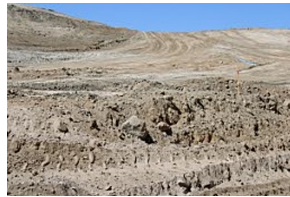
IMG_1005



IMG_1006



IMG_1007



IMG_1008



IMG_1009



IMG_1010



IMG_1011



IMG_1012



IMG_1013



IMG_1014



IMG_1015



IMG_1016



IMG_1017



IMG_1018



IMG_1019



IMG_1020



IMG_1021



IMG_1022



IMG_1023



IMG_1024



IMG_1025



IMG_1026



IMG_1027



IMG_1028



IMG_1029



IMG_1030



IMG_1031



IMG_1032



IMG_1033



IMG_1034



IMG_1035



IMG_1036



IMG_1037



IMG_1038



IMG_1039



IMG_1040



IMG_1041



IMG_1042



IMG_1043



IMG_1044



IMG_1045



IMG_1046



IMG_1047



IMG_1048



IMG_1049



IMG_1050



IMG_1051



IMG_1052



IMG_1053



IMG_1055



IMG_1056



IMG_0802



IMG_0803

**CHIQUITA CANYON LANDFILL
MITIGATION MONITORING SITE REPORT**

Monitor: James T. Aidukas	Page: 1 of 2
Discipline: Project Manager	Date: 5-24-2022
Site Conditions: 60–75°F, 5–15 mph winds	

SITE LOG

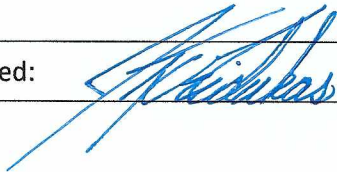
Drove the area around the site and the adjacent Val Verde neighborhood from 7:10 to 7:50 a.m. There were no landfill odors detected outside of the landfill perimeter. There was no landfill litter seen outside of the landfill limits. There was illegal dumping on Franklin Parkway's roadway shoulders. The Franklin Parkway air monitoring station was operating with no concerns noted. There was no construction activity occurring at the Wolcott Way future facilities area. Met with Mike Lindsay (UltraSystems), Edgar De La Torre (LACDRP), and Nicole Ward (Waste Connections). We then proceeded to monitor the site in separate vehicles and observed the following:

- The Chiquito Canyon Road new traffic control equipment cement block wall and the road bridge structure west of this equipment was graffitied. The traffic lights were not operational.
- The terminal basin had approximately two feet of standing water in it. There was a minor amount of windblown litter on the dirt sides of the basin. A substantial amount of litter was removed since the last site visit.
- The catch basin had a minor amount of standing water. Windblown litter was in the wet soil. There appears to have been no change since the last site visit. The Cell 8A catch basin extension was completed.
- Four air quality monitoring detection system were being stored at the office area.
- The Cell 8A final toe berm slopes was being final graded.
- The foundations for the liquids handling system were poured and curing. Structural rebar for the containment walls were sticking out of the foundation. Drainage sumps were installed in the foundation.
- On-site air quality monitoring station's solar panels were observed. All stations needed the panels to be cleaned.
- Grading for Cell 8A was nearing completion Grading for the westside box channel is underway. A paleontological monitor was observing grading in this area.
- The westside landfill slopes were observed. There was no gas or liquids odors detected. Slopes had no windblown litter.
- The upper portion of Cell 6 was active accepting waste. Orchards fans were operating. A white foam odor neutralizer was being used in the tipping area. Fresh waste odors were being controlled to the active area.
- A small homeowner area was observed. A tarp was being used for cover of the prior day's waste. There were no odors being emitted and no concerns were noted.
- The northeast sediment basin had standing water. Some of the water has evaporated since the last site monitoring visit.
- Excavation work continued in the northeast area of the future Cell 7. Cell 7 is being prepared to be the next waste cell due to delays in Cell 8B approvals that are connected to the Wolcott Way permitting.

- The primary canyon top deck was being used for clay, liner, and cover soil stockpile. Cell 8 construction soil was being stockpiled here and used for daily cover.
- There was no construction activity on the Wolcott Way site or the new access road from Wolcott Way. Permitting approval is causing construction delays.
- Installation of a new landfill gas flare is now scheduled to start in 2023.

FURTHER REVIEW NEEDED

Signed:



**CHIQUITA CANYON LANDFILL
MITIGATION MONITORING SITE REPORT**

Monitor: Mike Lindsay	Page: 1 of 2
Discipline: Environmental Engineer	Date: 05-24-2022 Tuesday
Site Conditions: Clear, 57–77 °F, SE 8–16 mph, 77% RH, 53 AQI	
SITE LOG	
<ol style="list-style-type: none"> 1. Monitor drove Chiquito Canyon Road and observed no wind-blown litter along slopes that are adjacent to the landfill’s perimeter fencing. 2. Monitor drove through the Val Verde neighborhood; no odors are present at 7:50 am. 3. Checked into office with Steve Cassulo (Waste Connections). 4. Met with Jim Aidukas (UltraSystems), and Edgar De La Torre (LACDRP). We followed Nicole Ward (Waste Connections) to site locations in separate vehicles. 5. Water trucks are applying water throughout site for dust control. 6. Observed excavation work for the new Cell 8 construction project, including the removal of the old landslide area, and re-packing it with new soil. 7. The new concrete pad for the leachate tanks has been poured and is curing. The pad includes floor drains throughout for secondary containment purposes. Rebar is set along pad perimeter for building side containment walls. 8. A bulldozer is contouring and compacting the lower south-facing side slopes of Cell 6. 9. Observed the overall landfill operations from the high southwestern ridge above Cell 8. 10. Street sweepers are cleaning the Wolcott Way area and along the 126 highway, and the scales area. 11. The air quality monitoring station above Cell 8 has road dust covering its solar panels. 12. Wind-blown trash has collected in small canyons southwest of Cell 8, outside of perimeter fencing. 13. Excavation work is ongoing to prepare for the southwest box channel extension to the southeast. 14. Paleo monitors are present for the excavation work occurring in Cell 8 undisturbed, native soil. 15. Workers are clearing sediment from the westside perimeter drainage channel. 16. The westside perimeter ridge is in good order, with new growth throughout. 17. The mitigation oak trees are growing well. 18. Observed the wet weather top deck, including dump trucks unloading additional crushed rock. 19. The homeowner drop-off area is in good order, with tarps being used to control odors. 20. Observed the working area at Cell 6 from the top deck, including three tippers at the east end of cell and moving floor trucks to the west, traffic controllers, orchard fans and water trucks to control dust and odors. ADC is 100% covered with new trash at 9:40 am. 21. A tank truck is spraying white-colored odor-neutralizing foam onto fresh trash for odor control. 22. Bird abatement is active. 23. Shredded tire rubber has been stockpiled at west end of Cell 6 for use in horizontal drain construction. 24. The truck wash station is in good order. 25. The northeast sediment basin is in good order, with water level decreasing due to evaporation. 26. Several small toads are present along banks of basin, about 2 centimeters in length. Bees and dragonflies are active along mud banks. 27. The closed canyon B area is in good order, including condensate storage tank. 28. Cell 7 area has fresh excavation work present along northwest side of cell. 29. The closed primary canyon top deck is in good order, with clay, five orchard fans and liner material being stored at the northwest end. Stockpiled soil is still being used for daily cover material. 	

30. A California kingsnake is present near stored equipment on primary canyon top deck.
31. The Wolcott Way entrance area is in good order, as viewed from high on the east perimeter ridge below primary canyon. No new construction activity was observed.
32. The air quality monitoring station above the Wolcott Way project area is in good order.
33. Flare 100 is operating at 2651 scfm, 1504 °F. Gas sample measured at 33 % Vol. CH₄, 1.2 % Vol. O₂, 50 ppm H₂S and 240 ppm CO. Inlet temperature is at 104 °F.
34. Flare 150 is operating at 2682 scfm, 1518 °F. Inlet temperature is at 106 °F.
35. The breakroom area is in good order.
36. Traffic spotters are onsite to control traffic.
37. The scales are in good order, with no odors present.
38. The south terminal basin and catch basin are in good order. Turbidity tests are pending for final discharge.
39. Five air quality monitoring stations are being stored behind the admin facility, while permits for installation are pending approval.
40. Checked out of site with Nicole Ward.

FURTHER REVIEW NEEDED

1. Clean AQMS solar panels above Cell 8.
2. Remove wind-blown litter from canyons outside of perimeter fencing adjacent to Cell 8.
3. Remove wind-blown litter from the landfill overall.

Signed: *Michael W. Lindsay*

June 2022

**CHIQUITA CANYON LANDFILL
MITIGATION MONITORING SITE REPORT**

Monitor: James T. Aidukas	Page: 1 of 2
Discipline: Project Manager	Date: 6-21-2022
Site Conditions: 60–95°F, 0–10 mph winds	

SITE LOG

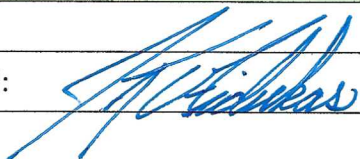
Drove the area around the site and the adjacent Val Verde neighborhood from 7:00 to 7:45 a.m. There were no landfill odors detected outside of the landfill perimeter. There was no landfill litter seen outside of the landfill limits. There was no illegal dumping on Franklin Parkway or Chiquito Canyon Road. The Franklin Parkway air monitoring station was operating with no concerns noted. There was no construction activity occurring at the Wolcott Way future facilities area. The chain-link gate had one section knocked down and was laying on the ground. This access to the landfill was not secure. The graffiti on the traffic signal equipment block wall and the road bridge structure off of Chiquito Canyon Road was not removed. Five Point was tilling their land off Chiquito Canyon Road to remove dry vegetation. This was causing large dust clouds. This may be a problem for the Val Verde neighborhood when high winds occur. Met with Mike Lindsay (UltraSystems), Ai-Viet Huyth (LACDRP), and Steve Cassulo (Waste Connections). We then proceeded to monitor the site in separate vehicles and observed the following:

- The liquids handling system's holding tank facility had the cement block secondary containment wall constructed. A space is provided for a Baker tank for sediment removal.
- The final toe berm slopes were final graded to a 2 ½ to 1 or 3 to 1 slope.
- The new and old areas of the catch basin had windblown litter in it. The floor soil was too wet to walk on and remove the litter.
- The air quality monitoring station above Cell 8A had the solar panels covered with a heavy layer of dirt.
- The extension to the westside box drainage channel, slope channels, and new downcomer channels were under construction.
- The excavation being done in the Cell 8A native soil area was being observed by a paleontological monitor. An archeological monitor was onsite when excavation is started in native soil area.
- The upper portion of Cell 6 was active accepting waste. Orchard fans were operating. A Morooka tank truck was spraying a white foam odor neutralizer on fresh odorous waste. Fresh waste odors were being controlled to the active area. The new realigned dirt road was being used to access the active area.
- Additional wet weather rubble was being stockpiled on the top deck of Cell 5.
- A small homeowner area was observed. A tarp was being used for cover of the prior day's waste. There were no odors being emitted and no concerns were noted.
- The northeast sediment basin had standing water. Evaporation has decreased the water level since the last visit.
- Clay has been placed in the bottom of Cell 8A.

- Excavation work was being done in the northeast area of the future Cell 7.
- The primary canyon top deck was being used for clay, liner, and cover soil stockpiled. Cell 8 construction soil was being stockpiled there and used for daily cover.
- The air quality station above the Wolcott Way site had a heavy layer of dirt covering the solar panels.
- The terminal basin was dry. Cleaning out sediment and any required improvements will be done after September 15.
- Three monitoring stations are being stored behind the administration office.

FURTHER REVIEW NEEDED

Signed:



**CHIQUITA CANYON LANDFILL
MITIGATION MONITORING SITE REPORT**

Monitor: Mike Lindsay	Page: 1 of 2
Discipline: Environmental Engineer	Date: 06-21-2022 Tuesday
Site Conditions: Clear, 65–95 °F, SW 2–12 mph, 33% RH, 33 AQI	
SITE LOG	
<ol style="list-style-type: none"> 1. Monitor drove Chiquito Canyon Road and observed minimal wind-blown litter along slopes that are adjacent to the landfill’s perimeter fencing. 2. Tractors are plowing the fields below the landfill’s perimeter fencing along Chiquito Canyon Road, causing large dust clouds to form. 3. Monitor drove through the Val Verde neighborhood; no odors are present at 7:30 am. 4. Checked into office with Steve Cassulo (Waste Connections). 5. Met with Jim Aidukas (UltraSystems) and Ai-Viet Huynh (LACDRP). We followed Steve Cassulo to site locations in separate vehicles. 6. Water trucks are applying water throughout site for dust control. 7. The new concrete pad for the leachate tanks has cinderblock walls that have been built around perimeter of pad. The pad includes an area for a custom-built Baker tank that will allow sediment to settle out before reaching the holding tanks. 8. Observed excavation work at new sediment basin, which is directly adjacent to the existing catch basin behind the admin building. 9. Excavators are filling dump trucks with soil to be removed from the Cell 8 construction area. 10. The catch basin is mostly dry, with mud at the low-point. Litter and trash have been removed from side walls, with remainder to be removed after the mud has dried. 11. The air quality monitoring station above Cell 8 still has road dust covering its solar panels. 12. Street sweepers are cleaning the haul roads. 13. Observed the working area at Cell 6 from the top deck, including three tippers at the east end of cell and moving floor trucks to the west, traffic controllers, orchard fans and water trucks to control dust and odors. ADC is 90% covered with new trash at 9:45 am. 14. A Morooka tank truck is spraying white-colored odor-neutralizing foam onto fresh trash for odor control. 15. Bird abatement is active. 16. The homeowner drop-off area is in good order. 17. Observed the wet weather top deck, including additional crushed rock piled for the winter months. 18. The truck wash station is in good order. 19. The closed canyon B area is in good order, including condensate storage tank. 20. The northeast sediment basin is in good order, with water level decreasing due to evaporation. 21. The small toads are not present along banks of basin as they were last month. Bees are active along mud banks. 22. Future Cell 7 area has fresh excavation work present along northwest side of cell. 23. The closed primary canyon top deck is in good order, with clay and liner material being stored at the northwest end. Stockpiled soil is still being used for daily cover material. 24. The Wolcott Way entrance area is in good order, as viewed from high on the east perimeter ridge below primary canyon. No new construction activity was observed. 25. The air quality monitoring station above the Wolcott Way project area is in good order. 	

26. Flare 100 is operating at 2806 scfm, 1510 °F. Gas sample measured at 36 % Vol. CH₄, 1.5 % Vol. O₂, 75 ppm H₂S and 230 ppm CO. Inlet temperature is at 120 °F.
27. Flare 150 is operating at 2797 scfm, 1546 °F. Inlet temperature is at 114 °F.
28. The breakroom area is in good order.
29. Traffic spotters are onsite to control traffic.
30. The scales are in good order, with no odors present.
31. The south terminal basin is almost dry, with mud at low-point.
32. Three air quality monitoring stations are being stored behind the admin facility, while permits for installation are pending approval.
33. Checked out of site with Steve Cassulo.

FURTHER REVIEW NEEDED

1. Clean AQMS solar panels above Cell 8.

Signed: *Michael W. Lindsay*