

**Chiquita Canyon Landfill
Independent Monitor
Quarterly Site Monitoring Status Report
February 22, 2022 through March 31, 2022**

Prepared For:

County of Los Angeles Department of Regional Planning



Prepared By:



16431 Scientific Way
Irvine, California 92618

Prepared On:

May 31, 2022

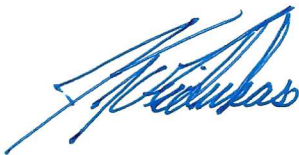
Certification Statement

May 31, 2022

The attached Quarterly Site Monitoring Status Report for the Chiquita Canyon Landfill dated May 31, 2022 is the First Quarterly Report for 2022, issued by UltraSystems. This report covers the monitoring period from February 22, 2022 through March 31, 2022 and is prepared for the County of Los Angeles Department of Regional Planning.

I, James T. Aidukas, Project Manager for the Mitigation Monitoring Services of the Chiquita Canyon Landfill, certify that the statements in the Quarterly Report and the referenced monthly reports reflect the site conditions observed and compliance status noted by me and other qualified experts during the stated site visits.

Signed,



James T. Aidukas

Project Manager

Contents

Quarterly Status Report.....	1
Site Visits During the Quarter.....	1
Definition of Terms.....	1
Acronyms and Abbreviations.....	2
Status Summary.....	3
Action Plan.....	9
Conclusion.....	9

Appendices

Appendix I	Photo Location Map and Site Monitoring Photos
Appendix II	Quarterly Site Visit Attendees by Date and Mitigation Monitoring Site Reports
Appendix III	Chiquita Canyon Landfill – Monitoring Conditions

Quarterly Status Report

This Quarterly Status Report is a compilation of the period's monthly Site Monitoring. After each site visit, the UltraSystems monitors who went to the Chiquita Canyon Landfill site each wrote a Site Visit Report. Any issues that required immediate attention were reported to Waste Connections staff and the appropriate staff at the County of Los Angeles Department of Regional Planning, the County of Los Angeles Department of Public Works and the Los Angeles County Local Enforcement Agency (LEA).

Site visits during the 1st Quarter followed the CDC guidelines for COVID-19 health protocols and complied with state and County restrictions. The landfill visits occurred on one day each month during the February and March 2022 period.

All UltraSystems monitors were in separate vehicles to observe and take photos of the landfill area and operations. There was limited contact with landfill staff. Any contact with staff observed social distancing, and the wearing of protective face coverings when in close proximity. There were no indoor gatherings.

The project team specialists reviewed the site photos and site visit reports remotely in the UltraSystems offices and developed a list of discussion items to review with landfill management. A monitoring conference call with landfill management provided answers and the status of the discussion items. This call was then transcribed, which concluded the monitoring activity.

This Quarterly Report provides the County of Los Angeles Department of Regional Planning with a concise status of the Mitigation Measure Monitoring for the period of February 22, 2022 to March 31, 2022. It includes:

1. A Status Summary of Compliant, Pending Review, Further Review Needed, and Non-Compliant with the requirements of the conditions and/or mitigation measures;
2. Photo Location Map and Site Monitoring Photos showing site conditions of key areas of the landfill during this quarter;
3. Site visit attendees by date of site visit and their site reports; and
4. Site Monitoring Conference Call Discussion Items and Site Monitoring call transcripts.

Site Visits During the Quarter

Two site visits were performed by UltraSystems during the February 22, 2022, through March 2022 period in order to observe operational site activities. They were performed on February 22, 2022, and March 31, 2022.

Definition of Terms

Compliant is defined as complying with the County conditions and/or mitigation measures.

Pending Review is defined as UltraSystems not yet having obtained nor reviewed any necessary landfill documents to assess that a program, plan, or testing satisfies the condition.

Further Review Needed is defined as implementing plans (agency-approved, if required) to fully comply with a condition and/or mitigation measure. Some plans, especially vegetation, require an extended time frame, and immediate compliance is not possible.

Non-Compliant is defined as not complying with the County conditions and/or mitigation measures.

Acronyms and Abbreviations

ADC	Alternative Daily Cover
BMPs	Best Management Practices
CAC	Community Action Committee
Cal-IPC	California Invasive Plant Council
CalRecycle	State of California Department of Resources Recycling and Recovery
Caltrans	State of California Department of Transportation
CARB	California Air Resources Board
CCL	Chiquita Canyon Landfill
CCR	California Code of Regulations
CDFW	California Department of Fish and Wildlife
CEO	Los Angeles County Chief Executive Office
CIP	Capital Improvement Plan
County	Los Angeles County
CPI	Consumer Price Index
CRMP	Cultural Resources Monitoring Plan
CRWQCB	California Regional Water Quality Control Board
CUP	Conditional Use Permit
CWA	Clean Water Act
DPH	Los Angeles County Department of Public Health
EIR	Environmental Impact Report
EPA	United States Environmental Protection Agency
GHG	Greenhouse Gas
IMP	Implementation and Monitoring Program
LACDPW	Los Angeles County Department of Public Works
LACDRP	Los Angeles County Department of Regional Planning
LEA	Los Angeles County Local Enforcement Agency
LFG	Landfill Gas
LFGTE	Landfill Gas-to-Energy Plant
MMRP	Mitigation Monitoring and Reporting Program
MPH	Miles per Hour
MRF	Materials Recovery Facility
NOD	Notice of Determination
NOV	Notice of Violation
OIMP	Odor Impact Minimization Plan
ORM	Odor Reduction Measure
OTP	Oak Tree Permit
RWQCB	Regional Water Quality Control Board
SCAQMD	Southern California Air Quality Management District
SOC	Statement of Overriding Considerations

SWFP	Solid Waste Facilities Permit issued by CalRecycle
SWMP	Solid Waste Management Program
TAC	Technical Advisory Committee
TPY	Tons per Year
USACE	United States Army Corps of Engineers
USFWS	United States Fish and Wildlife Service

Status Summary

This section summarizes the status of UltraSystems' independent monitoring of County conditions and/or mitigation measures that are set forth in Appendix III, and County-approved plans, programs, or testing.

Compliant with Conditions

- (CUP 22)** A graffiti-deterrent program has been approved by LACDPW and maintained by Waste Connections. No graffiti was observed on the exterior wall or within the landfill facility during the 1st Quarter of 2022.
- (CUP 23)** The amount of waste received is within the maximum tonnage allowed.
- (CUP 37)** One year before the 5th anniversary of the effective date of this grant, a permit requirement compliance study, which details the status of the permittee's compliance, shall be initiated by the permittee. This study must be submitted to the County of Los Angeles Department of Regional Planning by July 28, 2022. Waste Connections' management is aware of this requirement and they are working on the preparation of a compliance study.
- (CUP 40)** The facility is in compliance with the allowed operating hours.
- (CUP 43)** The facility is compliant with not using the listed prohibited material as an alternative waste cover. The facility is, however, using shredded rubber tires in the buried horizontal gas collection system in lieu of crushed rock to allow for better gas and liquids flow to the collection piping. This is compliant with County diversion efforts and allowed by RWQCB.
- (CUP 46)** Diversion and Public Awareness and Education Programs have been approved. The monitor has observed onsite compliance with diversion. This includes electronic waste and white goods consolidation and division; separation and grinding of concrete and asphalt for road construction and wet weather decking; and the use of alternative daily cover to minimize the use of soil cover. The programs are publicized through periodically distributed flyers, Chiquita Canyon Landfill's website postings, and their quarterly published newsletters.
- (CUP 48)** Prohibited waste was not observed being accepted, processed, or disposed of at the landfill.

- (CUP 49)** Waste Connections sends email notices concerning prohibited waste to managers of waste-hauling companies and individual haulers. These email notices provide information on what waste is accepted and prohibited. The site keeps records of the recipients.
- (CUP 55)** Appropriate surface water control systems have been installed and maintained at the landfill site to divert and control surface water impacts. The design and construction plans and engineering calculations have not been reviewed by UltraSystems. Removal of sediment and other maintenance of the basins starts on September 1 and are completed prior to October 1. Removal of sediment and brush in drainage channels starts in late May and is completed prior to October 1. Windblown litter is picked up as soon as possible to keep the landfill surface water control system free of litter.
- (CUP 56)** All development structures and required activities are reviewed and approved by County Public Works and permits issued, when required.
- (CUP 57)** Landfill liner and leachate collection systems have been installed and approved by RWQCB before waste was placed.
- (CUP 59)** Currently, there is no recycled water available for use at the landfill facility.
- (CUP 66)** Flares were observed and operating during site monitoring. No abnormal conditions were observed.
- (CUP 67)** Waste Connections has purchased a backup generator, which it is kept onsite for use during power outages and load-tested quarterly. Permanent electrical interconnections to the site's electrical system have been made.
- (CUP 71)** Waste Connections provided certification documents that show their vehicles being in compliance with CARB.
- (CUP 73)** A Fugitive Dust Control Program is being implemented at the landfill. Only localized dust from truck traffic was observed on the unpaved roads. Occasional dust was observed coming from transfer trucks tipping dusty loads. No dust was observed leaving the site during site monitoring visits.
- (CUP 75, 76)** There was no queuing of trucks at the entrance that extended past the main gate.
- (CUP 84)** A Track-Out Preventive and Minimization Plan is being implemented at the landfill. Paved roads were observed to be clean during site monitoring. Rumble steel plates were being used at junction points from dirt roads and working areas onto paved roads. The main access road has been reconstructed with compacted engineering fill and covered with crushed concrete and asphalt. This road will remain unpaved until the new Wolcott Way road is constructed.
- (CUP 82, 85, 86 and 87)**
A Vehicle Tarping, Litter Control and Litter Recovery Program is being implemented at the landfill. During onsite monitoring days, litter was seen on slopes onsite after high wind occurrences. Litter was being recovered by hand. Litter from landfill operations was not observed offsite.

(CUP 107) A Work Plan for Seismic Monitoring is being implemented at the landfill. The location of the equipment and site monitoring frequency has not been verified.

(CUP 127) The site is compliant with the sign posting requirements.

(CUP 128) The site is compliant with the hotline requirements.

Pending Review

(CUP 26) The landfill facilities have been relocated to temporary locations to allow for the reconstruction of the current paved access road, the construction of the final toe berm, and construction of Cell 8. A revised site plan should be submitted to and approved by LACDPW and LACDRP. The monitor has not verified that a revised plan has been approved. The relocation of facilities has not changed the limits of fill.

(CUP 52) Surface water monitoring data was not reviewed.

(CUP 64) The current amount of landfill gas being recovered averages approximately 9000 SCFM. The gas-to-energy plant burns approximately 3500 SCFM (approximately 40% of the total gas recovered) and 5000 SCFM is currently being flared. Waste Connections is working with gas treatment and sales experts to install a facility to treat the landfill gas now being flared (and future gas increases) and produce and sell it as high-BTU gas. A permit for a new flare has been approved and the installation will occur in 2023.

(CUP 68) The air quality monitor consultant has not yet installed five air quality monitoring stations outside the landfill property boundary. The method for analyzing and interpreting the data collected and the setting of thresholds has not been released by the consultant. Data analysis methods and results need to be reviewed.

(CUP 69) SCAQMD issued a modified Stipulated Order for Abatement on March 13, 2021 for odor nuisance violations. The implemented odor control measures were not all given to, nor reviewed by the monitor.

(CUP 74) An Odor Impact Minimization Plan is being implemented at the landfill. Odors were not detected by the monitor in the immediate residential areas during monitoring visits.

(CUP 75, 76) The program to reduce unnecessary truck trips and minimize queuing was not reviewed.

(CUP 95) The program to identify and conserve all significant archeological and paleontological material found onsite was not reviewed.

(CUP 97) The site had an old underground fuel storage tank located in the future Cell 8 area. This tank has been removed for Cell 8 development. CCL stated that County permits for the removal were obtained. There are currently no underground fuel storage tanks.

(CUP 134, 135, 136, 137, 138) Oak tree mitigation documents were not reviewed.

Further Review Needed

- (CUP 1, 27 and 124)** The Chiquita Canyon Landfill received County approval with conditions to proceed with Option 2 in their letter of November 30, 2018 in order to comply with CUP Conditions Nos. 27 and 124 concerning the construction and operation of a household hazardous waste facility. An onsite household hazardous waste facility will not be constructed until the new entrance roadway realignment and scalehouse construction are completed. The start of construction of the Wolcott Way new facilities has been delayed due to permits not being obtained. Specifics on the status of permitting and construction schedules are given in CUP 77, below. The start of construction of a household waste facility cannot be estimated at this time. The facility's design and construction plans were not prepared and submitted for review and approval. Condition 124 was also being challenged by Waste Connections. The status of that challenge is unknown at this time.
- (CUP 1, 28)** There is no organic waste composting facility currently onsite. The final certified EIR proposed a facility in the Wolcott Way site plan area. The feasibility of constructing and operating a composting facility has not been provided by Waste Connections. Currently, there are no plans for Waste Connections to construct and operate an organic waste composting facility.
- (CUP 29)** The current waste fill height and liner footprint are within the approved CUP limits for the operating landfill. The closed primary canyon landfill top deck has been used for stockpiling of soil from cell construction. There was approximately 20 to 30 feet of stockpiled soil. Verification of compliance with height and other permit conditions that limit use of this closed landfill has not been investigated by the monitor. The stockpiled soil on the top deck of the closed landfill is being used for the landfill daily cover. A significant amount of the stockpile was utilized during the prior report period. Clay for the Cell 8 liner is being stored on the top deck. Soil from the construction of Cell 8 is proposed to be stockpiled on this top deck. The ability to use this closed landfill area for soil stockpiling for operation activities needs to be verified.
- (CUP 41)** A general "One-Year Plan Map" plan in lieu of fill sequence plans have been developed and used at the site. Fill plans for landfill cells have been developed, numbered and presented in the annual reports. They are referred to as "phasing limits." Each cell is numbered. The filling sequence does not follow a numerical order. A written explanation of when each numbered cell is scheduled to be filled and what cell will be the next to be developed and filled should be developed by Waste Connections and presented to the agencies.
- (CUP 47)** Higher tipping rates for partial loads is accomplished by a minimum load charge of one ton. LACDPW has not issued a letter of compliance with the condition using a minimum load charge.

- (CUP 51)** The only grading outside of the approved fill limits were observed in the southwest area of Cell 8 development. Fill limits, as noted on environmental and landfill cell liner limit drawings, include disturbance and excavation/ earthfill outside of the liner limits for geological reasons. Approval by LACDPW was given because grading was required to address hillside stability by removing the previously identified landslide to stabilize the Cell 8 area.
- (CUP 55)** During the LACDPW review of construction plans for Cell 8 and the final toe berm, the size and construction of the final catch basin and terminal basin were an issue that require supplying engineering calculation and design support for the current basins. The issues are still under review by LACDPW permitting division.
- (CUP 63)** During site monitoring visits, the monitor did not detect any odor or see any dust from the landfill operations that left the site. There were localized odors, only normally detected, from newly disposed waste when within 300 feet from the operating area. Orchard fans were normally seen operating. A non-scented odor neutralizer foam was being sprayed on transfer truck loads that were potentially odorous to control odors at the working face. In the 1st Quarter, a misting system was observed operating on the ridge above Cell 6. The mist water had included a non-scented odor neutralizer. Localized odors were being controlled at the northwest perimeter slopes. Throughout the 1st Quarter, the monitor did not detect odors in the Val Verde neighborhood in the mid-morning timeframe on site visit days. A minor amount of localized dust occurred during the 1st Quarter on access roads to the active fill area and tipping of dusty loads. Dust did not leave the immediate dirt access roads and working areas.

Non-Compliant

(CUP 77) There was no construction activity at the Wolcott Way future facilities site. These facilities improvements are still in the permitting phase. The CUP required these improvements to be completed within one year of the effective date of the CUP. The following progress on the required improvements was made in the 1st Quarter.

Caltrans improvements and County road improvements: Final design of road improvements are close to being agreed to by the agencies, FivePoint and Waste Connections. Once finalized, permitting will follow. Road improvements will most likely take place in 2023.

Edison Pole Replacements: The Edison power poles have been relocated with the new poles located in an area which will allow for the future facilities to be constructed. These poles are now actively supplying electricity.

Site grading and soil importation: Waste Connections has performed a site soil balance for the main access road realignment, Wolcott Way facilities and the Cell 8 project. This will enable them to quantify how much and when they will need importation of soil. They will have to identify a source and quantity of soil before the County will consider processing a permit for soil importation and stockpiling. The grading at the Wolcott site is anticipated to start by August this year pending final approval of grading permits. Due to Cell 8 construction activity, this grading may be delayed until Spring 2023.

California Department of Fish and Wildlife permits have been issued for the Wolcott Way improvements, except for the new sediment and spadefoot toad basins. The building permits for the two basins were not yet approved by Fish and Wildlife pending review of basin design details.

(CUP 68, 77, 79, and 113)

The County Department of Regional Planning issued a Notice of Violation on June 11, 2020 to Waste Connections for a lack of progress in complying with these conditions. The resolution of this violation is not known by the monitor.

Action Plan

Compliant with Conditions

These conditions will continue to be monitored for compliance on future site visits.

Pending Review

The monitor will schedule a site monitoring conference call to solely obtain and review documents, and have site staff describe procedures being used to assure compliance with these conditions.

Further Review Needed

The monitor will investigate and obtain necessary information and data, as well as observe site conditions on future visits to determine status of compliance of the CUP conditions noted.

Non-Compliant

During the monitoring period, non-compliant with CUP conditions were noted. All of these were related to the timely implementation of construction of the new entrance, Caltrans improvements, and new facilities at the Wolcott Way site. Permitting issues remain a problem. SCAQMD adopted a modified Stipulated Order of Abatement dated March 13, 2021 to control offsite landfill odors. A mitigation plan is being implemented.

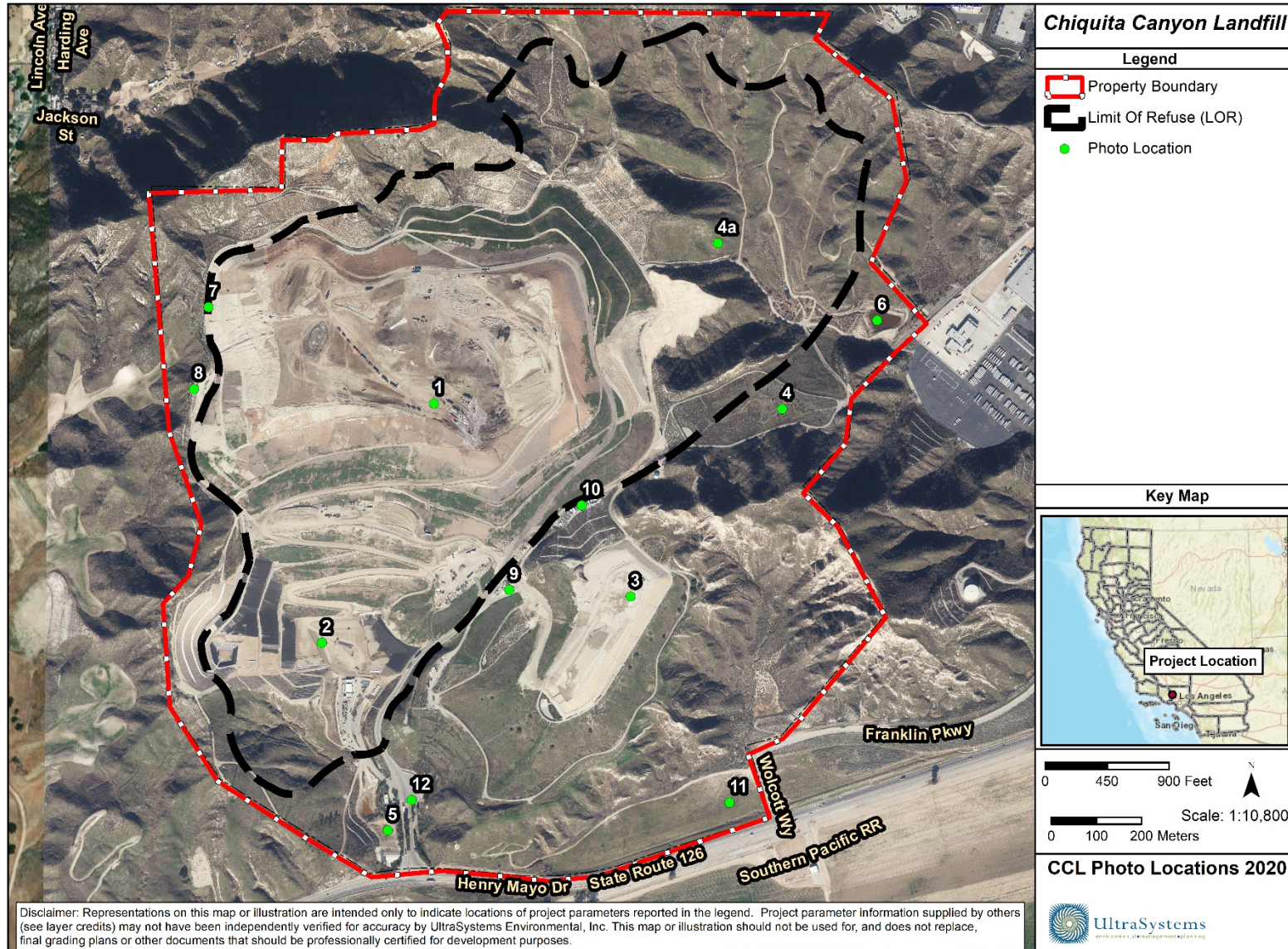
Conclusion

In this reporting period, UltraSystems has monitored the conditions and/or mitigation measures for the County, as shown above in the Status Summary.

The landfill is actively working toward being fully compliant with conditions and/or mitigation measures, with no landfill operations non-compliant conditions observed during site visits, except for lack of having progress with meeting CUP conditions for required site improvements and construction of auxiliary facilities.

Appendix I

Relevant Site Photos



September 16, 2020

Photo Location Map Key

Map Location	Title	Photo Number
1	Top Deck Working Area	1 - 23
2	Cell 6 Working Area	24 - 61
3	Closed Landfill - Primary Canyon	62 - 92
4	Closed Landfill - Canyon B	93 - 100
4a	Future Cells 7, 9 and 10	101 - 120
5	South Terminal and Catch Basins	121 - 148
6	Northeast Sediment Basin	149 - 155
7	Landfill Perimeter Drainage Channel	156 - 162
8	Westside Perimeter Ridge	163 - 164
9	Flare 100 and Flare 150	165 - 181
10	Gas-to-Energy Facility	182 - 185
11	Wolcott Way Entrance Facilities	186 - 198
12	Maintenance and Admin Buildings	199 - 200
-	Site, Observe Litter Offsite, Cell 8 Construction	201 - 336



Photo 1: Top Deck Working Area: February 22, 2022



Photo 2: Top Deck Working Area: February 22, 2022



Photo 3: Top Deck Working Area: February 22, 2022



Photo 4: Top Deck Working Area: February 22, 2022



Photo 5: Top Deck Working Area: February 22, 2022



Photo 6: Top Deck Working Area: February 22, 2022



Photo 7: Top Deck Working Area: February 22, 2022



Photo 8: Top Deck Working Area: February 22, 2022



Photo 9: Top Deck Working Area: February 22, 2022



Photo 10: Top Deck Working Area: February 22, 2022



Photo 11: Top Deck Working Area: February 22, 2022



Photo 12: Top Deck Working Area: February 22, 2022



Photo 13: Top Deck Working Area: February 22, 2022



Photo 14: Top Deck Working Area: February 22, 2022



Photo 15: Top Deck Working Area: February 22, 2022



Photo 16: Top Deck Working Area: February 22, 2022



Photo 17: Top Deck Working Area: February 22, 2022



Photo 18: Top Deck Working Area: February 22, 2022



Photo 19: Top Deck Working Area: February 22, 2022



Photo 20: Top Deck Working Area: February 22, 2022



Photo 21: Top Deck Working Area: March 31, 2022



Photo 22: Top Deck Working Area: March 31, 2022



Photo 23: Top Deck Working Area: March 31, 2022



Photo 24: Cell 6 Working Area: February 22, 2022



Photo 25: Cell 6 Working Area: February 22, 2022



Photo 26: Cell 6 Working Area: February 22, 2022



Photo 27: Cell 6 Working Area: February 22, 2022



Photo 28: Cell 6 Working Area: February 22, 2022



Photo 29: Cell 6 Working Area: February 22, 2022



Photo 30: Cell 6 Working Area: February 22, 2022



Photo 31: Cell 6 Working Area: February 22, 2022



Photo 32: Cell 6 Working Area: February 22, 2022



Photo 33: Cell 6 Working Area: February 22, 2022



Photo 34: Cell 6 Working Area: February 22, 2022



Photo 35: Cell 6 Working Area: February 22, 2022



Photo 36: Cell 6 Working Area: February 22, 2022



Photo 37: Cell 6 Working Area: February 22, 2022



Photo 38: Cell 6 Working Area: February 22, 2022



Photo 39: Cell 6 Working Area: February 22, 2022



Photo 40: Cell 6 Working Area: February 22, 2022



Photo 41: Cell 6 Working Area: March 31, 2022



Photo 42: Cell 6 Working Area: March 31, 2022



Photo 43: Cell 6 Working Area: March 31, 2022



Photo 44: Cell 6 Working Area: March 31, 2022



Photo 45: Cell 6 Working Area: March 31, 2022



Photo 46: Cell 6 Working Area: March 31, 2022



Photo 47: Cell 6 Working Area: March 31, 2022



Photo 48: Cell 6 Working Area: March 31, 2022



Photo 49: Cell 6 Working Area: March 31, 2022



Photo 50: Cell 6 Working Area: March 31, 2022



Photo 51: Cell 6 Working Area: March 31, 2022



Photo 52: Cell 6 Working Area: March 31, 2022



Photo 53: Cell 6 Working Area: March 31, 2022



Photo 54: Cell 6 Working Area: March 31, 2022



Photo 55: Cell 6 Working Area: March 31, 2022



Photo 56: Cell 6 Working Area: March 31, 2022



Photo 57: Cell 6 Working Area: March 31, 2022



Photo 58: Cell 6 Working Area: March 31, 2022



Photo 59: Cell 6 Working Area: March 31, 2022



Photo 60: Cell 6 Working Area: March 31, 2022



Photo 61: Cell 6 Working Area: March 31, 2022



Photo 62: Closed Landfill - Primary Canyon: February 22, 2022



Photo 63: Closed Landfill - Primary Canyon: February 22, 2022



Photo 64: Closed Landfill - Primary Canyon: February 22, 2022



Photo 65: Closed Landfill – Primary Canyon: February 22, 2022



Photo 66: Closed Landfill – Primary Canyon: February 22, 2022



Photo 67: Closed Landfill – Primary Canyon: February 22, 2022



Photo 68: Closed Landfill – Primary Canyon: February 22, 2022



Photo 69: Closed Landfill - Primary Canyon: February 22, 2022



Photo 70: Closed Landfill - Primary Canyon: February 22, 2022



Photo 71: Closed Landfill - Primary Canyon: February 22, 2022



Photo 72: Closed Landfill - Primary Canyon: February 22, 2022



Photo 73: Closed Landfill - Primary Canyon: February 22, 2022



Photo 74: Closed Landfill - Primary Canyon: February 22, 2022



Photo 75: Closed Landfill - Primary Canyon: March 31, 2022



Photo 76: Closed Landfill - Primary Canyon: March 31, 2022



Photo 77: Closed Landfill - Primary Canyon: March 31, 2022



Photo 78: Closed Landfill - Primary Canyon: March 31, 2022



Photo 79: Closed Landfill - Primary Canyon: March 31, 2022



Photo 80: Closed Landfill - Primary Canyon: March 31, 2022



Photo 81: Closed Landfill – Primary Canyon: March 31, 2022



Photo 82: Closed Landfill – Primary Canyon: March 31, 2022



Photo 83: Closed Landfill – Primary Canyon: March 31, 2022



Photo 84: Closed Landfill – Primary Canyon: March 31, 2022



Photo 85: Closed Landfill – Primary Canyon: March 31, 2022



Photo 86: Closed Landfill – Primary Canyon: March 31, 2022



Photo 87: Closed Landfill – Primary Canyon: March 31, 2022



Photo 88: Closed Landfill – Primary Canyon: March 31, 2022



Photo 89: Closed Landfill – Primary Canyon: March 31, 2022



Photo 90: Closed Landfill – Primary Canyon: March 31, 2022



Photo 91: Closed Landfill – Primary Canyon: March 31, 2022



Photo 92: Closed Landfill – Primary Canyon: March 31, 2022



Photo 93: Closed Landfill - Canyon B: February 22, 2022



Photo 94: Closed Landfill - Canyon B: February 22, 2022



Photo 95: Closed Landfill - Canyon B: February 22, 2022



Photo 96: Closed Landfill - Canyon B: March 31, 2022



Photo 97: Closed Landfill - Canyon B: March 31, 2022



Photo 98: Closed Landfill - Canyon B: March 31, 2022



Photo 99: Closed Landfill - Canyon B: March 31, 2022



Photo 100: Closed Landfill - Canyon B: March 31, 2022



Photo 101: Future Cells 7, 9 and 10: February 22, 2022



Photo 102: Future Cells 7, 9 and 10: February 22, 2022



Photo 103: Future Cells 7, 9 and 10: February 22, 2022



Photo 104: Future Cells 7, 9 and 10: February 22, 2022



Photo 105: Future Cells 7, 9 and 10: March 31, 2022



Photo 106: Future Cells 7, 9 and 10: March 31, 2022



Photo 107: Future Cells 7, 9 and 10: March 31, 2022



Photo 108: Future Cells 7, 9 and 10: March 31, 2022



Photo 109: Future Cells 7, 9 and 10: March 31, 2022



Photo 110: Future Cells 7, 9 and 10: March 31, 2022



Photo 111: Future Cells 7, 9 and 10: March 31, 2022



Photo 112: Future Cells 7, 9 and 10: March 31, 2022



Photo 113: Future Cells 7, 9 and 10: March 31, 2022



Photo 114: Future Cells 7, 9 and 10: March 31, 2022



Photo 115: Future Cells 7, 9 and 10: March 31, 2022



Photo 116: Future Cells 7, 9 and 10: March 31, 2022



Photo 117: Future Cells 7, 9 and 10: March 31, 2022



Photo 118: Future Cells 7, 9 and 10: March 31, 2022



Photo 119: Future Cells 7, 9 and 10: March 31, 2022



Photo 120: Future Cells 7, 9 and 10: March 31, 2022



Photo 121: South Terminal and Catch Basins: February 22, 2022



Photo 122: South Terminal and Catch Basins: February 22, 2022



Photo 123: South Terminal and Catch Basins: February 22, 2022



Photo 124: South Terminal and Catch Basins: February 22, 2022



Photo 125: South Terminal and Catch Basins: February 22, 2022



Photo 126: South Terminal and Catch Basins: February 22, 2022



Photo 127: South Terminal and Catch Basins: February 22, 2022



Photo 128: South Terminal and Catch Basins: February 22, 2022



Photo 129: South Terminal and Catch Basins: February 22, 2022



Photo 130: South Terminal and Catch Basins: February 22, 2022



Photo 131: South Terminal and Catch Basins: February 22, 2022



Photo 132: South Terminal and Catch Basins: February 22, 2022



Photo 133: South Terminal and Catch Basins: February 22, 2022



Photo 134: South Terminal and Catch Basins: February 22, 2022



Photo 135: South Terminal and Catch Basins: February 22, 2022



Photo 136: South Terminal and Catch Basins: February 22, 2022



Photo 137: South Terminal and Catch Basins: February 22, 2022



Photo 138: South Terminal and Catch Basins: February 22, 2022



Photo 139: South Terminal and Catch Basins: February 22, 2022



Photo 140: South Terminal and Catch Basins: February 22, 2022



Photo 141: South Terminal and Catch Basins: February 22, 2022



Photo 142: South Terminal and Catch Basins: March 31, 2022



Photo 143: South Terminal and Catch Basins: March 31, 2022



Photo 144: South Terminal and Catch Basins: March 31, 2022



Photo 145: South Terminal and Catch Basins: March 31, 2022



Photo 146: South Terminal and Catch Basins: March 31, 2022



Photo 147: South Terminal and Catch Basins: March 31, 2022



Photo 148: South Terminal and Catch Basins: March 31, 2022



Photo 149: Northeast Sediment Basin: March 31, 2022



Photo 150: Northeast Sediment Basin: March 31, 2022



Photo 151: Northeast Sediment Basin: March 31, 2022



Photo 152: Northeast Sediment Basin: March 31, 2022



Photo 153: Northeast Sediment Basin: March 31, 2022



Photo 154: Northeast Sediment Basin: March 31, 2022



Photo 155: Northeast Sediment Basin: March 31, 2022



**Photo 156: Site: February 22, 2022
February 22, 2022**



**Photo 157: Site: February 22, 2022
February 22, 2022**



**Photo 158: Landfill Perimeter Drainage Channel:
February 22, 2022**



**Photo 159: Site: February 22, 2022
February 22, 2022**



**Photo 160: Site: February 22, 2022
February 22, 2022**



**Photo 161: Site: February 22, 2022
February 22, 2022**



**Photo 162: Site: February 22, 2022
February 22, 2022**



Photo 163: Westside Perimeter Drainage: February 22, 2022



Photo 164: Westside Perimeter Drainage: February 22, 2022



Photo 165: Flare 100 and Flare 150: February 22, 2022



Photo 166: Flare 100 and Flare 150: February 22, 2022



Photo 167: Flare 100 and Flare 150: February 22, 2022



Photo 168: Flare 100 and Flare 150: February 22, 2022



Photo 169: Flare 100 and Flare 150: February 22, 2022



Photo 170: Flare 100 and Flare 150: February 22, 2022



Photo 171: Flare 100 and Flare 150: February 22, 2022



Photo 172: Flare 100 and Flare 150: February 22, 2022



Photo 173: Flare 100 and Flare 150: February 22, 2022



Photo 174: Flare 100 and Flare 150: February 22, 2022



Photo 175: Flare 100 and Flare 150: March 31, 2022



Photo 176: Flare 100 and Flare 150: March 31, 2022



Photo 177: Flare 100 and Flare 150: March 31, 2022



Photo 178: Flare 100 and Flare 150: March 31, 2022



Photo 179: Flare 100 and Flare 150: March 31, 2022



Photo 180: Flare 100 and Flare 150: March 31, 2022



Photo 181: Flare 100 and Flare 150: March 31, 2022



Photo 182: Gas-to-Energy Facility: February 22, 2022



Photo 183: Gas-to-Energy Facility: February 22, 2022



Photo 184: Gas-to-Energy Facility: March 31, 2022



Photo 185: Gas-to-Energy Facility: March 31, 2022



Photo 186: Wolcott Way Entrance Facilities: February 22, 2022



Photo 187: Wolcott Way Entrance Facilities: February 22, 2022



Photo 188: Wolcott Way Entrance Facilities: February 22, 2022



Photo 189: Wolcott Way Entrance Facilities: February 22, 2022



Photo 190: Wolcott Way Entrance Facilities: February 22, 2022



Photo 191: Wolcott Way Entrance Facilities: March 31, 2022



Photo 192: Wolcott Way Entrance Facilities: March 31, 2022



Photo 193: Wolcott Way Entrance Facilities: March 31, 2022



Photo 194: Wolcott Way Entrance Facilities: March 31, 2022



Photo 195: Wolcott Way Entrance Facilities: March 31, 2022



Photo 196: Wolcott Way Entrance Facilities: March 31, 2022



Photo 197: Wolcott Way Entrance Facilities: March 31, 2022



Photo 198: Wolcott Way Entrance Facilities: March 31, 2022



**Photo 199: Maintenance and Admin Buildings:
February 22, 2022**



**Photo 200: Maintenance and Admin Buildings:
February 22, 2022**



Photo 201: Site: February 22, 2022



Photo 202: Site: February 22, 2022



Photo 203: Site: February 22, 2022



Photo 204: Site: February 22, 2022



Photo 205: Site: February 22, 2022



Photo 206: Site: February 22, 2022



Photo 207: Site: February 22, 2022



Photo 208: Site: February 22, 2022



Photo 209: Site: February 22, 2022



Photo 210: Site: February 22, 2022



Photo 211: Site: February 22, 2022



Photo 212: Site: February 22, 2022



Photo 213: Site: February 22, 2022



Photo 214: Site: February 22, 2022



Photo 215: Site: February 22, 2022



Photo 216: Site: February 22, 2022



Photo 217: Site: February 22, 2022



Photo 218: Site: February 22, 2022



Photo 219: Site: February 22, 2022



Photo 220: Site: February 22, 2022



Photo 221: Site: February 22, 2022



Photo 222: Site: February 22, 2022



Photo 223: Site: February 22, 2022



Photo 224: Site: February 22, 2022



Photo 225: Site: February 22, 2022



Photo 226: Site: February 22, 2022



Photo 227: Site: February 22, 2022



Photo 228: Site: February 22, 2022



Photo 229: Site: February 22, 2022



Photo 230: Site: February 22, 2022



Photo 231: Site: February 22, 2022



Photo 232: Site: February 22, 2022



Photo 233: Site: February 22, 2022



Photo 234: Site: February 22, 2022



Photo 235: Site: February 22, 2022



Photo 236: Site: February 22, 2022



Photo 237: Site: February 22, 2022



Photo 238: Site: February 22, 2022



Photo 239: Site: February 22, 2022



Photo 240: Site: February 22, 2022



Photo 241: Site: February 22, 2022



Photo 242: Site: February 22, 2022



Photo 243: Site: February 22, 2022



Photo 244: Site: February 22, 2022



Photo 245: Site: February 22, 2022



Photo 246: Site: February 22, 2022



Photo 247: Site: February 22, 2022



Photo 248: Site: February 22, 2022



Photo 249: Site: February 22, 2022



Photo 250: Site: February 22, 2022



Photo 251: Site: February 22, 2022



Photo 252: Site: March 31, 2022



Photo 253: Site: March 31, 2022



Photo 254: Site: March 31, 2022



Photo 255: Site: March 31, 2022



Photo 256: Site: March 31, 2022



Photo 257: Site: March 31, 2022



Photo 258: Site: March 31, 2022



Photo 259: Site: March 31, 2022



Photo 260: Site: March 31, 2022



Photo 261: Site: March 31, 2022



Photo 261: Site: March 31, 2022



Photo 263: Observe Litter Offsite: February 22, 2022



Photo 264: Observe Litter Offsite: February 22, 2022



Photo 265: Observe Litter Offsite: February 22, 2022



Photo 266: Observe Litter Offsite: February 22, 2022



Photo 267: Observe Litter Offsite: February 22, 2022



Photo 268: Observe Litter Offsite: February 22, 2022



Photo 269: Observe Litter Offsite: February 22, 2022



Photo 270: Observe Litter Offsite: February 22, 2022



Photo 271: Observe Litter Offsite: February 22, 2022



Photo 272: Observe Litter Offsite: February 22, 2022



Photo 273: Observe Litter Offsite: February 22, 2022



Photo 274: Observe Litter Offsite: February 22, 2022

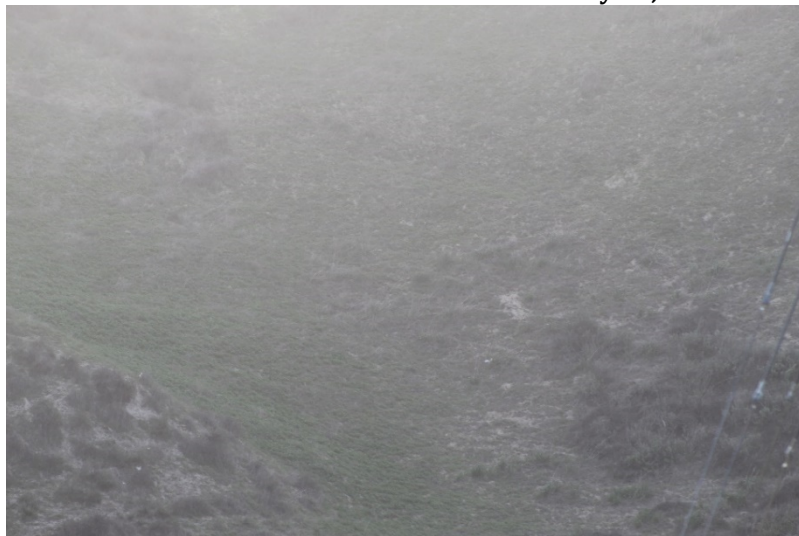


Photo 275: Observe Litter Offsite: February 22, 2022



Photo 276: Observe Litter Offsite: February 22, 2022



Photo 277: Observe Litter Offsite: February 22, 2022



Photo 278: Observe Litter Offsite: February 22, 2022



Photo 279: Observe Litter Offsite: February 22, 2022



Photo 280: Observe Litter Offsite: March 31, 2022



Photo 281: Observe Litter Offsite: March 31, 2022



Photo 282: Observe Litter Offsite: March 31, 2022



Photo 283: Observe Litter Offsite: March 31, 2022



Photo 284: Observe Litter Offsite: March 31, 2022



Photo 285: Observe Litter Offsite: March 31, 2022



Photo 286: Observe Litter Offsite: March 31, 2022



Photo 287: Observe Litter Offsite: March 31, 2022



Photo 288: Observe Litter Offsite: March 31, 2022



Photo 289: Observe Litter Offsite: March 31, 2022



Photo 290: Observe Litter Offsite: March 31, 2022



Photo 291: Observe Litter Offsite: March 31, 2022



Photo 292: Observe Litter Offsite: March 31, 2022



Photo 293: Cell 8 Construction: February 22, 2022



Photo 294: Cell 8 Construction: February 22, 2022



Photo 295: Cell 8 Construction: February 22, 2022



Photo 296: Cell 8 Construction: February 22, 2022



Photo 297: Cell 8 Construction: February 22, 2022



Photo 298: Cell 8 Construction: February 22, 2022



Photo 299: Cell 8 Construction: February 22, 2022



Photo 300: Cell 8 Construction: February 22, 2022



Photo 301: Cell 8 Construction: February 22, 2022



Photo 302: Cell 8 Construction: February 22, 2022



Photo 303: Cell 8 Construction: February 22, 2022



Photo 304: Cell 8 Construction: February 22, 2022



Photo 305: Cell 8 Construction: February 22, 2022



Photo 306: Cell 8 Construction: February 22, 2022



Photo 307: Cell 8 Construction: February 22, 2022



Photo 308: Cell 8 Construction: February 22, 2022



Photo 309: Cell 8 Construction: February 22, 2022



Photo 310: Cell 8 Construction: February 22, 2022



Photo 311: Cell 8 Construction: February 22, 2022



Photo 312: Cell 8 Construction: March 31, 2022



Photo 313: Cell 8 Construction: March 31, 2022



Photo 314: Cell 8 Construction: March 31, 2022



Photo 315: Cell 8 Construction: March 31, 2022



Photo 316: Cell 8 Construction: March 31, 2022



Photo 317: Cell 8 Construction: March 31, 2022



Photo 318: Cell 8 Construction: March 31, 2022



Photo 319: Cell 8 Construction: March 31, 2022



Photo 320: Cell 8 Construction: March 31, 2022



Photo 321: Cell 8 Construction: March 31, 2022



Photo 322: Cell 8 Construction: March 31, 2022



Photo 323: Cell 8 Construction: March 31, 2022

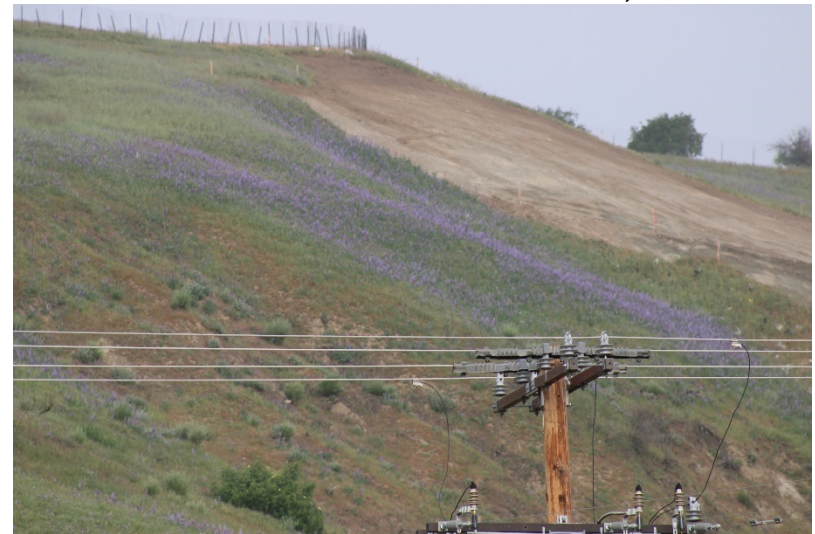


Photo 324: Cell 8 Construction: March 31, 2022



Photo 325: Cell 8 Construction: March 31, 2022



Photo 326: Cell 8 Construction: March 31, 2022



Photo 327: Cell 8 Construction: March 31, 2022



Photo 328: Cell 8 Construction: March 31, 2022



Photo 329: Cell 8 Construction: March 31, 2022



Photo 330: Cell 8 Construction: March 31, 2022



Photo 331: Cell 8 Construction: March 31, 2022



Photo 332: Cell 8 Construction: March 31, 2022



Photo 333: Cell 8 Construction: March 31, 2022



Photo 334: Cell 8 Construction: March 31, 2022



Photo 335: Cell 8 Construction: March 31, 2022



Photo 336: Cell 8 Construction: March 31, 2022

Appendix II

Quarterly Site Visits: Site Visit Attendees by Date of Site Visit/ Mitigation Monitoring Site Reports

Chiquita Canyon Landfill Site Monitoring Procedures for February and March 2022

To follow the CDC guidelines for COVID-19 health protocols and to comply with State, County and City restrictions, UltraSystems is extending the monitoring of the landfill to occur on one day each month during February through March 2022; continue practicing physical distancing; and wearing a protective face covering.

UltraSystems will send a single engineer to perform a fact-finding visit in a single vehicle. The engineer will sign-in by phone with landfill staff when arriving on site. The engineer will start at the office parking and drive around the site, taking pictures of the current landfill conditions, construction activities, waste disposal, gas recovery and flaring. The engineer will not leave the immediate area of the vehicle or have personal contact with any landfill staff or waste disposal customers. Photo locations will include:

1. Current disposal and inactive areas
2. Onsite areas with windblown litter
3. Perimeter drainage system
4. Landfill slopes
5. Closed Canyon B and Primary Canyon landfills
6. Northeast sediment basin
7. Future cells 7, 9 and 10 areas
8. Cell 7 graded and soil stockpile areas
9. Gas-to-energy plant
10. Gas flares
11. Wolcott Way entrance facilities activities
12. Wolcott Way sediment basin and mitigation pond areas
13. Cell 8 development activities
14. South catch basin and terminal basin
15. Maintenance and administration areas
16. General site areas
17. Offsite general conditions

After performing the monitoring activities, the UltraSystems engineer will notify Waste Connections' staff that they are signing out and leaving the site.

All photos will be emailed to Waste Connections' staff, Los Angeles County Regional Planning and Los Angeles County Department of Public Works. A post-site visit monitoring conference call will follow after reviewing the photos and engineer's observation notes.

February 2022

Chiquita Canyon Landfill Meeting Log
February 22, 2022 Site Visit
March 16, 2022 Site Monitoring Conference Call

Site Visit was performed by Jim Aidukas, Mike Lindsay and Amir Ayati (UltraSystems)
Remote Site monitoring conference call with Steve Cassulo and Nicole Ward (Waste Connections)

Participants:

James Aidukas, UltraSystems
Mike Lindsay, UltraSystems
Edgar De La Torre, LACDRP

There was no conference call for the October 28, 2021, site visit and there were no site visits until February 22, 2022, because of a police investigation searching for items that may have been disposed of in the landfill. Because of a spike in COVID-19 and health directives, conference calls will be the method used to get additional operational information and obtain answers to questions until the County allows onsite meetings to occur.

Discussion:

To follow CDC guidelines for COVID-19 health protocols, UltraSystems sent a single person to perform a site visit to photograph site conditions and record site observations of the landfill. Additional staff with special education and skills, like biologists, archeologists, or engineers also visit when needed; all staff drive in separate vehicles. After reviewing the photos and observation record, a post-site visit conference call was held to discuss Chiquita Canyon Landfill operations and the status of construction, maintenance, and compliance for the month of September. We asked questions regarding health measures, site operations, weather impacts, landfill gas and liquids control, construction activities and mitigation measures status. We received comments and updates from Waste Connections staff concerning discussion items delineated on the attached conference call agenda as follows:

Discussion Topics After Reviewing Site Visit Photos for February 22, 2022

1. (Photos 2379, 2389, 2388, 2391, 2392) The monitor drove the area around the landfill and neighborhood from 7:00 – 8:00 a.m. There were no landfill odors detected. The new Edison power poles were completed with wire strung and were operational. Windblown litter from Highway 126 was observed along the Wolcott Way fencing. Illegal dumping was observed on the shoulders of Chiquita Canyon Road. There was no windblown litter observed that came from the landfill. (Note: during our site visit, the illegal dumping was picked up.)
 - a.) Has the litter been picked up?
 - o Steve Cassulo stated that the litter has been picked up.

2. (Photos 2399, 2400, 2417, 2419, 2420, 2423, 4257, 4269, 4275) Litter was observed in the Cell 6 upper and lower temporary basins and along the southern upper ridgeline road's fencing. Litter was also seen on the upper slope areas. The recent high winds were the cause.
 - a.) Has the litter been picked up?

- Steve Cassulo stated that they had litter pickers get everything that was in the dry area, and an excavator was used to clean up the litter in the muddy and wet area.
- 3. (Photos 2410, 2401, 2402, 2404, 2406, 2408) The south-facing slopes of Cell 6 were observed. There were no operational concerns. The slopes were free of litter. There were no odors detected coming from these slopes.
 - Steve Cassulo acknowledged the statement.
- 4. (Photos 2421, 2423, 4323, 4324, 4330, 4333, 4334) The drainage channel adjacent to the westside ridge access road had sediment and debris blocking portions of the channel.
 - a.) When will this be cleaned up?
 - Steve Cassulo stated that they have cleaned up the litter and blockage, but the dirt may get cleaned up prior to the August/September timeframe depending on the construction schedule. As long as the construction is going on they can get started on working on the channels earlier.
- 5. (Photo 2426) Palm trees were observed growing out of the mulch on the top deck's western slope.
 - a.) Will these be removed?
 - Nicole Ward stated that they are starting to remove the palm trees, but some cannot be pulled out by hand and need to be dug out.
- 6. (Photos 2437, 2438, 2440, 2441, 2442, 2443, 2433, 2434) The site disposal areas were observed. There were minor, localized, fresh trash odors near the waste disposal area. There was some localized dust from the compactors moving the waste. No odors or dust were leaving the immediate areas. Orchard fans were operating along with the other existing fans. There were no waste disposal operations concerns.
 - Steve Cassulo acknowledged the statement.
- 7. (Photo 2442) The primary canyon has had a significant amount of the stockpiled soil removed. Cell 8 imported clay is now being stored on this top deck.
 - a.) How much clay is being stored?
 - Steve Cassulo stated that about 40,000 cubic yards are being stored.
 - b.) How much Cell 8 soil will be stored on the deck?
 - Steve Cassulo stated that they are scheduled to store between 90,000 and 110,000 cubic yards, depending on what they need on a daily basis throughout the next two or three months.
- 8. (Photos 2465, 2466, 2467) The north basin was observed. There were no concerns noted.
 - Steve Cassulo acknowledged the statement.

This site monitoring was the only monitoring since October 28, 2021. To make it easy to be brought up to date, we would like to request a copy of the site construction schedule that would show permitting and construction for Cell 8, modification to the terminal basin, and future site development at the Wolcott Way site be provided to us prior to the conference call and reviewed during the call.

In summary, the site was operating with no operational concerns that left the site. Windblown litter was an onsite issue due to frequent high-wind days.

Site Operations Questions

1. Were there any notices of violation (NOV) issued in February?
 - Steve Cassulo stated that there were no NOVs issued in February.
2. Were there any operational complaints in February?
 - Steve Cassulo stated that there were no verified operational complaints in February.

Site Visit Comments

- Mike Lindsay reviewed statements made in the MMSRF site report.

Chiquita Canyon Landfill February 22, 2022, Site Visit

Conference Call Discussion Items

There was no conference call for the October 28, 2021, site visit and there were no site visits until February 22, 2022, because of a police investigation searching for items that may have been disposed of in the landfill. Because of a spike in COVID-19 and health directives, conference calls will be the method used to get additional operational information and obtain answers to questions until the County allows onsite meetings to occur.

Discussion Topics After Reviewing Site Visit Photos for February 22, 2022

1. (Photos 2379, 2389, 2388, 2391, 2392) The monitor drove the area around the landfill and neighborhood from 7:00 – 8:00 a.m. There were no landfill odors detected. The new Edison power poles were completed with wire strung and were operational. Windblown litter from Highway 126 was observed along the Wolcott Way fencing. Illegal dumping was observed on the shoulders of Chiquita Canyon Road. There was no windblown litter observed that came from the landfill. (Note: during our site visit, the illegal dumping was picked up.)
 - a.) Has the litter been picked up?
2. (Photos 2399, 2400, 2417, 2419, 2420, 2423, 4257, 4269, 4275) Litter was observed in the Cell 6 upper and lower temporary basins and along the southern upper ridgeline road's fencing. Litter was also seen on the upper slope areas. The recent high winds were the cause.
 - a.) Has the litter been picked up?
3. (Photo 2412, 4284, 4290) The liquids handling facility was observed. There were no odors or concerns noted. There was a new access road for the liquid removal trucks.
 - a.) When is it scheduled for the current white condensate storage tanks to be relocated?
4. (Photos 2410, 2401, 2402, 2404, 2406, 2408) The south-facing slopes of Cell 6 were observed. There were no operational concerns. The slopes were free of litter. There were no odors detected coming from these slopes.
5. (Photos 2421, 2423, 4323, 4324, 4330, 4333, 4334) The drainage channel adjacent to the westside ridge access road had sediment and debris blocking portions of the channel.
 - a.) When will this be cleaned up?
6. (Photo 2426) Palm trees were observed growing out of the mulch on the top deck's western slope.
 - a.) Will these be removed?
7. (Photos 2437, 2438, 2440, 2441, 2442, 2443, 2433, 2434) The site disposal areas were observed. There were minor, localized, fresh trash odors near the waste disposal area. There was some localized dust from the compactors moving the waste. No odors or dust were leaving the immediate areas. Orchard fans were operating along with the other existing fans. There were no waste disposal operations concerns.

8. (Photo 2442) The primary canyon has had a significant amount of the stockpiled soil removed. Cell 8 imported clay is now being stored on this top deck.
 - a.) How much clay is being stored?
 - b.) How much Cell 8 soil will be stored on the deck?

9. (Photos 2465, 2466, 2467) The north basin was observed. There were no concerns noted.

This site monitoring was the only monitoring since October 28, 2021. To make it easy to be brought up to date, we would like to request a copy of the site construction schedule that would show permitting and construction for Cell 8, modification to the terminal basin, and future site development at the Wolcott Way site be provided to us prior to the conference call and reviewed during the call.

In summary, the site was operating with no operational concerns that left the site. Windblown litter was an onsite issue due to frequent high-wind days.

Site Operations Questions

1. Were there any notices of violation (NOV) issued in February?
2. Were there any operational complaints in February?

Site Visit Comments

To be discussed during the conference call.



IMG_4283.jpg



IMG_4284.jpg



IMG_4285.jpg



IMG_4286.jpg



IMG_4287.jpg



IMG_4288.jpg



IMG_4289.jpg



IMG_4290.jpg



IMG_4291.jpg



IMG_4292.jpg



IMG_4293.jpg



IMG_4294.jpg



IMG_4295.jpg



IMG_4297.jpg



IMG_4298.jpg



IMG_4299.jpg



IMG_4300.jpg



IMG_4301.jpg



IMG_4302.jpg



IMG_4303.jpg



IMG_4304.jpg



IMG_4305.jpg



IMG_4306.jpg



IMG_4307.jpg



IMG_4308.jpg



IMG_4309.jpg



IMG_4310.jpg



IMG_4311.jpg



IMG_4312.jpg



IMG_4313.jpg



IMG_4314.jpg



IMG_4315.jpg



IMG_4316.jpg



IMG_4317.jpg



IMG_4318.jpg



IMG_4319.jpg



IMG_4320.jpg



IMG_4321.jpg



IMG_4322.jpg



IMG_4323.jpg



IMG_4324.jpg



IMG_4326.jpg



IMG_4327.jpg



IMG_4328.jpg



IMG_4329.jpg



IMG_4330.jpg



IMG_4331.jpg



IMG_4332.jpg



IMG_4333.jpg



IMG_4334.jpg



IMG_4335.jpg



IMG_4336.jpg



IMG_4337.jpg



IMG_4338.jpg



IMG_4339.jpg



IMG_4340.jpg



IMG_4341.jpg



IMG_4342.jpg



IMG_4343.jpg



IMG_4344.jpg



IMG_4345.jpg



IMG_4346.jpg



IMG_4347.jpg



IMG_4348.jpg



IMG_4349.jpg



IMG_4350.jpg



IMG_4351.jpg



IMG_4352.jpg



IMG_4353.jpg



IMG_4354.jpg



IMG_4355.jpg



IMG_4356.jpg



IMG_4357.jpg



IMG_4358.jpg



IMG_4359.jpg



IMG_4360.jpg



IMG_4361.jpg



IMG_4362.jpg



IMG_4363.jpg



IMG_4364.jpg



IMG_4365.jpg



IMG_4366.jpg



IMG_4367.jpg



IMG_4368.jpg



IMG_4369.jpg



IMG_4370.jpg



IMG_4371.jpg



IMG_4372.jpg



IMG_4373.jpg



IMG_4374.jpg



IMG_4375.jpg



IMG_4376.jpg



IMG_4377.jpg



IMG_4378.jpg



IMG_4379.jpg



IMG_4380.jpg



IMG_4381.jpg



IMG_4382.jpg



IMG_4383.jpg



IMG_4384.jpg



IMG_4385.jpg



IMG_4386.jpg



IMG_4387.jpg



IMG_4388.jpg



IMG_4389.jpg



IMG_4390.jpg



IMG_4391.jpg



IMG_4392.jpg



IMG_4393.jpg



IMG_4394.jpg



IMG_4395.jpg



IMG_4396.jpg



IMG_4397.jpg



IMG_4398.jpg



IMG_4399.jpg



IMG_4400.jpg



IMG_4401.jpg



IMG_4402.jpg



IMG_4403.jpg



IMG_4404.jpg



IMG_4405.jpg



IMG_4406.jpg



IMG_4407.jpg



IMG_4409.jpg



IMG_4410.jpg



IMG_4411.jpg



IMG_4412.jpg



IMG_4413.jpg



IMG_4414.jpg



IMG_4415.jpg



IMG_4416.jpg



IMG_4417.jpg



IMG_4418.jpg



IMG_4419.jpg



IMG_4420.jpg



IMG_4421.jpg



IMG_4422.jpg



IMG_4423.jpg



IMG_4424.jpg



IMG_4425.jpg



IMG_4426.jpg



IMG_4427.jpg



IMG_4428.jpg



IMG_4429.jpg



IMG_4430.jpg



IMG_4431.jpg



IMG_4432.jpg



IMG_4240.jpg



IMG_4241.jpg



IMG_4242.jpg



IMG_4243.jpg



IMG_4244.jpg



IMG_4245.jpg



IMG_4246.jpg



IMG_4247.jpg



IMG_4248.jpg



IMG_4249.jpg



IMG_4250.jpg



IMG_4251.jpg



IMG_4252.jpg



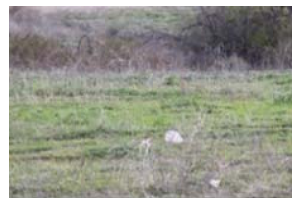
IMG_4253.jpg



IMG_4254.jpg



IMG_4255.jpg



IMG_4256.jpg



IMG_4257.jpg



IMG_4258.jpg



IMG_4259.jpg



IMG_4260.jpg



IMG_4261.jpg



IMG_4262.jpg



IMG_4263.jpg



IMG_4264.jpg



IMG_4265.jpg



IMG_4266.jpg



IMG_4267.jpg



IMG_4268.jpg



IMG_4269.jpg



IMG_4270.jpg



IMG_4271.jpg



IMG_4272.jpg



IMG_4273.jpg



IMG_4274.jpg



IMG_4275.jpg



IMG_4276.jpg



IMG_4277.jpg



IMG_4278.jpg



IMG_4279.jpg



IMG_4280.jpg

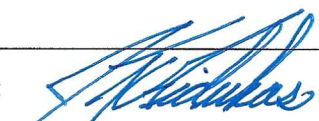


IMG_4281.jpg



IMG_4282.jpg

**CHIQUITA CANYON LANDFILL
MITIGATION MONITORING SITE REPORT**

Monitor: James T. Aidukas	Page: 1 of 1
Discipline: Project Manager	Date: 2-22-2022
Site Conditions: 50–60°F, 5–20 mph winds	
SITE LOG	
<p>Drove the area around the site and the adjacent Val Verde neighborhood from 7:10 to 7:50 a.m. No landfill odors were detected. There was a minor amount of litter seen on the upper portion of the slope facing Chiquito Canyon Road approximately near the Cell 5 western fencing. Any litter along the road was picked up and bags were seen for pick up and disposal. The Edison new poles construction starting at the Wolcott Way site was completed and operational. There were no construction activities for the new facilities at the Wolcott Way site. There was illegal dumping of wood, broken concrete, and cardboard boxes on the Franklin Parkway road's shoulder. The Franklin Parkway air monitoring station was operating with no concerns noted. Met with Mike Lindsay and Amir Ayati (UltraSystems), Edgar De La Torre and Diana Gonzalez (LACDRP), and Steve Cassulo and Nicole Ward (Waste Connections). We then proceeded to monitor the site in separate vehicles and observed the following:</p> <ul style="list-style-type: none">• The temporary basin at the toe of Cell 6 bottom slope had water, wet sediment, and windblown litter in it. Litter could not be removed.• The north Cell 8 native graded slope had a soil and straw wattles washout from the recent rain event.• The south facing Cell 6 slope had no flagging in the mulch and was free of windblown litter.• The upper Cell 6 basin had water and windblown litter in it. Litter could not be removed.• There was a minor amount grading for an access road being done to provide access to the Cell 8 area. The permits are pending approval for the major slope grading in the south area of Cell 8 and the out of approve CUP fill limits.• The condensate and leachate handling facility were observed while being emptied by a pumper truck. There were no odors leaving the immediate area.• Sediment and litter were observed in the westside perimeter drainage channel and on the westside fencing.• The Cell 5 westside slopes had palm trees growing in the mulch. There was flagging in the mulch and some windblown litter on the top deck.• The homeowner drop-off area was on the Cell 5 top deck and the area was kept small.• Cell 6 was active accepting waste on the present deck location. Windblown litter was seen on the adjacent slopes and flat areas. The tipping odors were being kept localized by use of orchard fans.• The Primary Canyon top deck had the Cell 8 clay being stored on it. The soil stockpile was being used for daily cover.• The northeast basin had a significant amount of water in it. There were no toads observed.	
FURTHER REVIEW NEEDED	
Signed: 	

**CHIQUITA CANYON LANDFILL
MITIGATION MONITORING SITE REPORT**

Monitor: Mike Lindsay	Page: 1 of 2
Discipline: Environmental Engineer	Date: 02-02-2022 Tuesday
Site Conditions: Mostly Cloudy, 48–56 °F, SE 6–18 mph, 50% RH, 31 AQI	
SITE LOG	
<ol style="list-style-type: none"> 1. Monitor drove Chiquito Canyon Road and observed some wind-blown litter along slopes that are adjacent to the landfill’s perimeter fencing. 2. Landfill workers are picking up wind-blown litter, staging bagged trash along roadway for pick-up. 3. Monitor drove through the Val Verde neighborhood; no odors are present at 7:50 am. 4. Street sweepers are cleaning the entrance area and along the 126 highway. 5. Checked into office with Steve Cassulo (Waste Connections). 6. Met with Jim Aidukas and Amir Ayati (UltraSystems), and followed Steve Cassulo and Nicole Ward (Waste Connections) to site locations in separate vehicles. 7. Observed the south slopes of Cell 6, including straw wattles that have been installed on the east-facing slopes to control erosion. 8. The leachate collection tanks are in good order with odors present. A tanker truck is pumping leachate out of the holding tanks south of Cell 6. About 5 to 8 trucks are required per day. 9. A wide ditch has been excavated at the lower base of the existing haul road and base of future Cell 8 in advance preparation for the full Cell 8 construction. 10. A low-point for water collection has litter present at the base of Cell 6. 11. The new Edison power poles have all been installed, including wire installation. 12. Water trucks are applying water throughout site for dust control. 13. Observed the overall Cell 8 construction area from the southwest perimeter ridge. 14. A pumper truck is heading to the west slopes for dewatering the well field. 15. Wind-blown litter is present in canyons and slopes around the landfill, with workers picking it up into bags. 16. The mitigation oak trees are in good order. 17. Wind-blown trash and debris are present along the westside perimeter drainage channel. 18. The Cell 5 top deck wet weather area is in good order, including piles of crushed rock for additional wet weather decking. Some flagging debris is present at deck surface. 19. The homeowner’s drop-off area is in good order, located on the top deck. 20. Per Steve Cassulo, six million cubic yards of stockpiled soil are available on the native top deck area. 21. Observed the working area at Cell 6, with two tippers, traffic controllers and water trucks to control dust and odors. ADC is 65% covered with new trash at 9:30 am. 22. Bird abatement is active at Cell 6, with smaller black birds and some American crows flocking by the working face. 23. Observed working area at deck-level; odors were localized and not leaving the site. 24. Traffic spotters are onsite to control traffic. 25. The closed primary canyon top deck is in good order, with materials, equipment and parts being stored at the northwest end, and stockpiled soil still being used for daily cover material. 26. Observed stockpiled clay on the primary canyon deck, covered with ADC to retain moisture. About 28,000 cubic yards were purchased for two future cells (Cell 8 and then Cell 7). 27. Sukut scrapers are stored on the primary canyon top deck. 	

28. A new 10,000-gallon storage tank is being stored on primary canyon, along with liner material.
29. The Wolcott Way entrance area is in good order, as viewed from high on the east perimeter ridge below primary canyon. The new Edison power poles have been installed with lines.
30. The drainage channel below Primary Canyon has been cleaned out, with periodic berms installed to let sediment to drop out.
31. The air quality monitoring station above the Wolcott Way project area is in good order.
32. The track-out rumble strips along the main haul road have been cleaned of soil.
33. The closed canyon B is in good order, including condensate storage tank.
34. The northeast sediment basin is in good order, with water at the medium-high level.
35. The equipment wash station is in good order.
36. The future Cell 7 area is in good order.
37. Flare 100 is operating at 2687 scfm, 1483 °F. Gas sample measured at 39 % Vol. CH₄, 1.5 % Vol. O₂, 57 ppm H₂S and 500 ppm CO. Inlet temperature is at 125 °F.
38. Flare 150 is operating at 2626 scfm, 1542 °F. Inlet temperature is at 122 °F.
39. The breakroom area is in good order.
40. Five air quality monitoring stations are being stored behind the admin buildings, while permits for installation are pending approval.
41. The south terminal basin and catch basin have water present from seasonal rain.
42. The scales are in good order, with no odors present.
43. Checked out of site with Steve Cassulo.

FURTHER REVIEW NEEDED

1. Remove wind-blown litter from the westside perimeter drainage channel and landfill overall.

Signed:



**CHIQUITA CANYON LANDFILL
MITIGATION MONITORING SITE REPORT**

Monitor: Amir Ayati	Page: 1 of 2
Discipline: Staff Scientist	Date: 02-22-2022 Tuesday
Site Conditions: Mostly Cloudy, 48–56 °F, SE 6–18 mph, 50% RH, 31 AQI	
SITE LOG	
<ol style="list-style-type: none"> 1. Drove down Chiquito Canyon Road and observed some wind-blown litter along slopes that are adjacent to the landfill’s perimeter fencing. 2. Landfill workers are picking up wind-blown litter, staging bagged trash along roadway for pick-up. 3. Driving through the Val Verde neighborhood and no odors are present at 7:50 am. 4. Street sweepers are cleaning the entrance area and along the 126 highway. 5. Met with Jim Aidukas and Mike Lindsay (UltraSystems), and followed Steve Cassulo and Nicole Ward (Waste Connections) to site locations in separate vehicles. 6. Observed the south slopes of Cell 6. 7. A tanker truck is pumping leachate out of the holding tanks south of Cell 6. About 5 to 8 trucks are required per day. 8. A wide ditch has been excavated at the lower base of the existing haul road and base of future Cell 8 in advance preparation for the full Cell 8 construction. 9. A low-point for water collection has litter present at the base of Cell 6. 10. The new Edison power poles have all been installed, including wire installation. 11. Water trucks are applying water throughout site for dust control. 12. Observed the overall Cell 8 construction area from the southwest perimeter ridge. 13. A pumper truck is heading to the west slopes for dewatering the well field. 14. Wind-blown litter is present in canyons and slopes around the landfill, with workers picking it up into bags. 15. Wind-blown trash and debris are present along the westside perimeter drainage channel. 16. The Cell 5 top deck wet weather area is in good order, including piles of crushed rock for additional wet weather decking. 17. Observed the working area at Cell 6, with two tippers, traffic controllers and water trucks to control dust and odors. ADC is 65% covered with new trash at 9:30 am. 18. Bird abatement is active at Cell 6, with smaller black birds and some American crows flocking by the working face. 19. Observed working area at deck-level; odors were localized and not leaving the site. 20. Traffic spotters are onsite to control traffic. 21. The closed primary canyon top deck is in good order, with materials, equipment and parts being stored at the northwest end, and stockpiled soil still being used for daily cover material. 22. Observed stockpiled clay on the primary canyon deck, covered with ADC to retain moisture. About 28,000 cubic yards were purchased for two future cells (Cell 8 and then Cell 7). 23. Sukut scrapers are stored on the primary canyon top deck. 24. A new 10,000-gallon storage tank is being stored on primary canyon, along with liner material. 25. The drainage channel below Primary Canyon has been cleaned out, with periodic berms installed to let sediment to drop out. 26. The track-out rumble strips along the main haul road have been cleaned of soil. 27. The closed canyon B is in good order, including condensate storage tank. 	

- 28. The northeast sediment basin is in good order, with water at the medium-high level.
- 29. The equipment wash station is in good order.
- 30. The future Cell 7 area is in good order.
- 31. The south terminal basin and catch basin have water present from seasonal rain.
- 32. The scales are in good order, with no odors present.

FURTHER REVIEW NEEDED

- 1. Remove wind-blown litter from the westside perimeter drainage channel and landfill overall.

Signed:



March 2022

Chiquita Canyon Landfill Meeting Log
March 31, 2022, Site Visit
April 21, 2022 Conference Call

Site Visit was performed by Jim Aidukas and Mike Lindsay (UltraSystems), and Tarik Hadj-Hamou (SRK)

Remote Site monitoring conference call with Steve Cassulo and Nicole Ward (Waste Connections)

Participants:

Mike Lindsay, UltraSystems

Discussion:

To follow CDC guidelines for COVID-19 health protocols, UltraSystems sent a single person to perform a site visit to photograph site conditions and record site observations of the landfill. Additional staff with special education and skills, like biologists, archeologists, or engineers also visit when needed; all staff drive in separate vehicles. After reviewing the photos and observation record, a post-site visit conference call was held to discuss Chiquita Canyon Landfill operations and the status of construction, maintenance, and compliance for the month of September. We asked questions regarding health measures, site operations, weather impacts, landfill gas and liquids control, construction activities and mitigation measures status. We received comments and updates from Waste Connections staff concerning discussion items delineated on the attached conference call agenda as follows:

Discussion Topics After Reviewing Site Visit Photos for March 31, 2022

1. (Photos 0004-0016, 2694-2704) The monitor drove the area around the landfill and neighborhood from 7:00 – 8:00 a.m. There were no landfill odors detected offsite. The new Edison power poles were completed with wire strung and were operational. A minor amount of windblown litter from Highway 126 was observed along the Wolcott Way fencing. There was a pile of brush with plastic around it (Photo 2702) that might be a homeless person's encampment. There was no illegal dumping observed on the shoulders of Chiquita Canyon Road. There was no windblown litter observed that came from the landfill.
 - a.) Was the brush and plastic sheeting seen in photos 2702 a homeless camp?
 - o Nicole Ward stated that the plastic sheeting was not a homeless encampment, and the debris has been removed.
2. (Photos 2705-2707) The intersection of Highway 126 and Chiquita Canyon Road was observed. Traffic control lights were installed at the intersection.
 - a.) Are these lights now operating?
 - o Nicole Ward stated that the lights are currently not operating.
 - b.) Is there any impact to the landfill?
 - o Nicole Ward stated that there should not be any impact to the landfill.
3. (Photos 0019-0027, 2708-2713, 2729-2734) The Cell 8 excavation and the construction of a new temporary access road were observed. Excavated soil was being used for the new temporary road and also stockpiled on the top of the closed Primary Canyon landfill area.

The current paved road will be dismantled and reconstructed on a compaction soil base. Archeological, paleontological and Native American monitors were at the excavation area.

- a.) How much soil will be stockpiled on the Primary Canyon top deck? What will it be used for in the future?
 - o Nicole Ward stated that about 90,000 cubic yards will be stockpiled on the Primary Canyon top deck, and it will be used as cover material for the rest of Cell 6, and for roughly six months for Cell 8.
 - b.) When is the current access road scheduled to be shut down? How long will the reconstruction take?
 - o Nicole Ward stated that it was shut down on April 11, 2022 and is due to be rebuilt around April 27, 2022.
 - c.) When is the installation of liner scheduled to start? When is Cell 8 scheduled to be able to accept waste? What is the calculated waste capacity of Cell 8?
 - o Nicole Ward stated that the current schedule for the liner installation is roughly the beginning of August. Cell 8 is scheduled to accept waste either in late September or early October of this year. The calculated capacity of Cell 8 is 3.9 million cubic yards, or a 3-to-4-year capacity.
4. (Photos 2714-2719) The current fill slope west of the future Cell 7 were observed. Litter was seen comingled with the processed wood waste mulch cover. The future Cell 7 had some minor grading.
- a.) Will this litter be removed?
 - o Nicole Ward stated that portions have been removed and they are still working on removing all of the litter.
 - b.) What was the purpose of the grading in Cell 7?
 - o Nicole Ward stated that the grading in Cell 7 was done for future cover material.
 - o Steve Cassulo stated that there is native soil there and it is the borrow area for more cover material coming this winter.
 - c.) Some of the surface drainage V-ditches had vegetation growing in and adjacent to the ditches. Will this be cleared before the October 1 rain season?
 - o Nicole Ward stated that the vegetation growing in the V-ditches is part of the maintenance tasks to be completed before the rainy season.
5. (Photos 0102-0107, 2720-2722) The northeast sediment basin was observed. The basin and adjacent areas were being maintained. There was some water in the basin. Tadpoles were observed.
- o Steve Cassulo acknowledged the statement.
6. (Photos 0051-0059) The site waste disposal area was active in Cell 6. The orchard fans were operating. There were no waste odors leaving the immediate tipping area.
- o Steve Cassulo acknowledged the statement.
7. (Photos 0033-0039, 2735, 2736) The terminal basin was observed and had standing water. None of the County-requested improvements were done.
- a.) When are these scheduled to be done?
 - o Nicole Ward stated that these improvements are scheduled to be done in July once the water has dried up, and that the catch basin has already been drained.

8. (Photos 0133-0138, 2725-2729) The future facilities site areas at Wolcott Way were observed. What is the current schedule for these construction elements?
- a.) Mass grading and site fill soil placement
 - Steve Cassulo stated that they are still waiting on permits and do not expect the final permits until June at the earliest, and possibly August.
 - b.) Wolcott Way and Highway 126 road improvements
 - Steve Cassulo stated that the road improvements will likely take place next year.
 - c.) Drainage improvements including basins for sediment and toad mitigation
 - Steve Cassulo stated that the drainage improvement will also likely take place next year.
 - d.) New entrance road
 - Steve Cassulo stated that they will try to start this year if they obtain permits before August, but otherwise, construction will begin next year.
 - e.) Buildings and scales construction
 - Steve Cassulo stated that the buildings and scales will begin construction next year.

In summary, the site was operating with no operational concerns that were observed and no odors were detected leaving the site. Windblown litter was an onsite issue due to frequent high-wind days, and flagging debris was in the cover mulch.

Site Operations Questions

1. Were there any notices of violation (NOV) issued in March?
 - Nicole Ward stated that there were no NOVs issued in March.
2. Were there any operational complaints in March?
 - Nicole Ward stated that there were two days where AQMD received operational complaints in March.

Site Visit Comments

- Mike Lindsay reviewed statements made in the MMSRF site report.

The conference call concluded.

Chiquita Canyon Landfill March 31, 2022, Site Visit

Conference Call Discussion Items

Discussion Topics After Reviewing Site Visit Photos for March 31, 2022

1. (Photos 0004-0016, 2694-2704) The monitor drove the area around the landfill and neighborhood from 7:00 – 8:00 a.m. There were no landfill odors detected offsite. The new Edison power poles were completed with wire strung and were operational. A minor amount of windblown litter from Highway 126 was observed along the Wolcott Way fencing. There was a pile of brush with plastic around it (Photo 2702) that might be a homeless person's encampment. There was no illegal dumping observed on the shoulders of Chiquita Canyon Road. There was no windblown litter observed that came from the landfill.
 - a.) Was the brush and plastic sheeting seen in photos 2702 a homeless camp?
2. (Photos 2705-2707) The intersection of Highway 126 and Chiquita Canyon Road was observed. Traffic control lights were installed at the intersection.
 - a.) Are these lights now operating?
 - b.) Is there any impact to the landfill?
3. (Photos 0019-0027, 2708-2713, 2729-2734) The Cell 8 excavation and the construction of a new temporary access road were observed. Excavated soil was being used for the new temporary road and also stockpiled on the top of the closed Primary Canyon landfill area. The current paved road will be dismantled and reconstructed on a compaction soil base. Archeological, paleontological and Native American monitors were at the excavation area.
 - a.) How much soil will be stockpiled on the Primary Canyon top deck? What will it be used for in the future?
 - b.) When is the current access road scheduled to be shut down? How long will the reconstruction take?
 - c.) When is the installation of liner scheduled to start? When is Cell 8 scheduled to be able to accept waste? What is the calculated waste capacity of Cell 8?
4. (Photos 2714-2719) The current fill slope west of the future Cell 7 were observed. Litter was seen comingled with the processed wood waste mulch cover. The future Cell 7 had some minor grading.
 - a.) Will this litter be removed?
 - b.) What was the purpose of the grading in Cell 7?
 - c.) Some of the surface drainage V-ditches had vegetation growing in and adjacent to the ditches. Will this be cleared before October 1 rain season?
5. (Photos 0102-0107, 2720-2722) The northeast sediment basin was observed. The basin and adjacent areas were being maintained. There was some water in the basin. Tadpoles were observed.
6. (Photos 0051-0059) The site waste disposal area was active in Cell 6. The orchard fans were operating. There were no waste odors leaving the immediate tipping area.

7. (Photos 0033-0039, 2735, 2736) The terminal basin was observed and had standing water. None of the County-requested improvements were done.
 - a.) When are these scheduled to be done?

8. (Photos 0133-0138, 2725-2729) The future facilities site areas at Wolcott Way were observed. What is the current schedule for these construction elements?
 - a.) Mass grading and site fill soil placement
 - b.) Wolcott Way and Highway 126 road improvements
 - c.) Drainage improvements including basins for sediment and toad mitigation
 - d.) New entrance road
 - e.) Buildings and scales construction

In summary, the site was operating with no operational concerns that were observed and no odors were detected leaving the site. Windblown litter was an onsite issue due to frequent high-wind days, and flagging debris was in the cover mulch.

Site Operations Questions

1. Were there any notices of violation (NOV) issued in March?
2. Were there any operational complaints in March?

Site Visit Comments

To be discussed during the conference call.



IMG_0075.jpg



IMG_0076.jpg



IMG_0077.jpg



IMG_0078.jpg



IMG_0079.jpg



IMG_0080.jpg



IMG_0081.jpg



IMG_0082.jpg



IMG_0083.jpg



IMG_0084.jpg



IMG_0085.jpg



IMG_0086.jpg



IMG_0087.jpg



IMG_0088.jpg



IMG_0089.jpg



IMG_0090.jpg



IMG_0091.jpg



IMG_0092.jpg



IMG_0093.jpg



IMG_0094.jpg



IMG_0095.jpg



IMG_0096.jpg



IMG_0097.jpg



IMG_0098.jpg



IMG_0099.jpg



IMG_0100.jpg



IMG_0102.jpg



IMG_0103.jpg



IMG_0104.jpg



IMG_0105.jpg



IMG_0106.jpg



IMG_0107.jpg



IMG_0108.jpg



IMG_0109.jpg



IMG_0110.jpg



IMG_0111.jpg



IMG_0112.jpg



IMG_0113.jpg



IMG_0114.jpg



IMG_0115.jpg



IMG_0116.jpg



IMG_0117.jpg



IMG_0118.jpg



IMG_0119.jpg



IMG_0120.jpg



IMG_0124.jpg



IMG_0125.jpg



IMG_0126.jpg



IMG_0127.jpg



IMG_0128.jpg



IMG_0129.jpg



IMG_0130.jpg



IMG_0131.jpg



IMG_0132.jpg



IMG_0133.jpg



IMG_0136.jpg



IMG_0137.jpg



IMG_0138.jpg



IMG_0140.jpg



IMG_0141.jpg



IMG_0142.jpg



IMG_0144.jpg



IMG_0145.jpg



IMG_0146.jpg



IMG_0147.jpg



IMG_0148.jpg



IMG_0149.jpg



IMG_0150.jpg



IMG_0151.jpg



IMG_0152.jpg



IMG_0153.jpg



IMG_0004.jpg



IMG_0005.jpg



IMG_0006.jpg



IMG_0007.jpg



IMG_0008.jpg



IMG_0009.jpg



IMG_0010.jpg



IMG_0011.jpg



IMG_0012.jpg



IMG_0013.jpg



IMG_0014.jpg



IMG_0015.jpg



IMG_0016.jpg



IMG_0017.jpg



IMG_0018.jpg



IMG_0019.jpg



IMG_0020.jpg



IMG_0021.jpg



IMG_0022.jpg



IMG_0023.jpg



IMG_0024.jpg



IMG_0025.jpg



IMG_0026.jpg



IMG_0027.jpg



IMG_0028.jpg



IMG_0029.jpg



IMG_0030.jpg



IMG_0031.jpg



IMG_0032.jpg



IMG_0033.jpg



IMG_0034.jpg



IMG_0035.jpg



IMG_0036.jpg



IMG_0037.jpg



IMG_0038.jpg



IMG_0039.jpg



IMG_0040.jpg



IMG_0041.jpg



IMG_0042.jpg



IMG_0043.jpg



IMG_0044.jpg



IMG_0045.jpg



IMG_0046.jpg



IMG_0047.jpg



IMG_0048.jpg



IMG_0049.jpg



IMG_0050.jpg



IMG_0051.jpg



IMG_0052.jpg



IMG_0053.jpg



IMG_0054.jpg



IMG_0055.jpg



IMG_0056.jpg



IMG_0057.jpg



IMG_0058.jpg



IMG_0059.jpg



IMG_0060.jpg



IMG_0061.jpg



IMG_0062.jpg



IMG_0063.jpg



IMG_0064.jpg



IMG_0065.jpg



IMG_0066.jpg



IMG_0070.jpg



IMG_0071.jpg



IMG_0072.jpg



IMG_0073.jpg



IMG_0074.jpg

**CHIQUITA CANYON LANDFILL
MITIGATION MONITORING SITE REPORT**

Monitor: James T. Aidukas	Page: 1 of 1
Discipline: Project Manager	Date: 3-31-2022
Site Conditions: 50–69°F, 0–10 mph winds	
SITE LOG	
<p>Drove the area around the site and the adjacent Val Verde neighborhood from 7:15 to 7:45 a.m. There were no landfill odors detected outside of the landfill perimeter. There was no landfill litter seen outside of the landfill limits. There was a minor amount of litter on the Highway 126 on the Wolcott Way future landfill facilities site and its fence. There was no illegal dumping on Franklin Parkway or Chiquito Canyon Roads. The Franklin Parkway air monitoring station was operating with no concerns noted. There was a pile of brush with plastic on it west of the air monitoring station It could be a homeless person's encampment. The new Edison power poles were operational. There was no construction activity occurring at the Wolcott Way future facilities area. A new traffic signal was installed at the Highway 126 and Chiquito Canyon Road intersection. It was not yet operating. Met with Mike Lindsay (UltraSystems), Tarik Hadj-Hamou (SRK) and Steve Cassulo and Nicole Ward (Waste Connections). We then proceeded to monitor the site in separate vehicles and observed the following:</p> <ul style="list-style-type: none">• The initial grading for Cell 8 south of Cell 6 was occurring along with the building of a temporary access road to allow the reconstruction of the main access road. Excess soil was being stockpiled on the top deck of Primary Canyon.• Archeological, paleontological, and Native American monitors were observing the grading activity.• Observed the slopes west of the future Cell 7. The mulch on the slopes had flagging that should be removed.• The future Cell 7 area was being graded to level the top and provide proper drainage. This area will supply future cover soil.• The v-ditches around Cell 7 had sediment with vegetation growing in them.• The northeast sediment basin and adjacent area was being maintained. There was water in the basin and tadpoles were observed.• Cell 6 was active acceptive waste. Orchard fans were operating. There were no waste disposal odors leaving the active area.• Two additional orchard fans are on site waiting for SCAQMD permits to be issued.• Five air monitoring stations are on site at the office location waiting for construction/installation permits.• The catch and terminal basins had water in them from the recent rain events. Improvements have not been done.	
FURTHER REVIEW NEEDED	
Signed: 	

**CHIQUITA CANYON LANDFILL
MITIGATION MONITORING SITE REPORT**

Monitor: Mike Lindsay	Page: 1 of 2
Discipline: Environmental Engineer	Date: 03-31-2022 Thursday
Site Conditions: Mostly Cloudy, 50–69 °F, SE 2–10 mph, 89% RH, 50 AQI	
SITE LOG	
<ol style="list-style-type: none"> 1. Monitor drove Chiquito Canyon Road and observed no wind-blown litter along slopes that are adjacent to the landfill’s perimeter fencing. 2. Monitor drove through the Val Verde neighborhood; no odors are present at 7:40 am. 3. Checked into office with Steve Cassulo (Waste Connections). 4. Met with Jim Aidukas (UltraSystems) and Tarik Hadj-Hamou (SRK), and followed Steve Cassulo and Nicole Ward (Waste Connections) to site locations in separate vehicles. 5. Water trucks are applying water throughout site for dust control. 6. Observed excavation work for the new Cell 8 construction project, including rippers, scrapers and dozers along the western slopes. 7. The new liner system is planned to be installed in July and August 2022. 8. Sukut scrapers are hauling soil from the Cell 8 excavation area to the closed primary canyon top deck for stockpiling cover material. 9. Paleo monitors are present for the excavation work occurring in undisturbed, native soil. No significant cultural resources have been discovered. 10. Biological nesting bird surveys were performed before the excavation work began. A hummingbird nest was found, which postponed construction work for three weeks. 11. The south terminal basin and catch basin are in good order, with water at about half-capacity. 12. Observed the working area at Cell 6, with three tippers, traffic controllers, orchard fans and water trucks to control dust and odors. 13. The Cell 5 top deck wet weather area is in good order, including piles of crushed rock for additional wet weather decking. Some flagging debris is present at deck surface. 14. The homeowner’s drop-off area is in good order, located on the top deck. 15. Wind-blown litter is present in canyons and slopes around the landfill, with workers picking it up into bags. 16. The equipment wash station is in good order. 17. The future Cell 7 area is in good order, including stockpiled soil. 18. The closed canyon B area is in good order, including condensate storage tank. 19. The northeast sediment basin is in good order, with water at the mid-capacity level. 20. The large drainage culvert northeast of the basin is mostly clear of debris and vegetation. 21. Black-colored tadpoles about one centimeter long are swimming in basin. About one dozen are present along two meters of the basin’s shoreline. 22. The closed primary canyon top deck is in good order, with materials, equipment and parts being stored at the northwest end, and stockpiled soil still being used for daily cover material. 23. Observed stockpiled clay on the primary canyon deck, covered with ADC to retain moisture. 24. A new 10,000-gallon storage tank is being stored on primary canyon, along with liner material. 25. The two new high-capacity orchard fans are still stored on the primary canyon top deck, waiting for permits to operate from the SCAQMD. 26. Traffic spotters are onsite to control traffic. 	

27. The Wolcott Way entrance area is in good order, as viewed from high on the east perimeter ridge below primary canyon.
28. The air quality monitoring station above the Wolcott Way project area is in good order.
29. The track-out rumble strips along the main haul road have been cleaned of soil.
30. Flare 100 is operating at 2526 scfm, 1509 °F. Gas sample measured at 37 % Vol. CH₄, 1.9 % Vol. O₂, 29 ppm H₂S and 200 ppm CO. Inlet temperature is at 120 °F.
31. Flare 150 is operating at 2595 scfm, 1535 °F. Inlet temperature is at 122 °F.
32. A new third flare is planned to be installed this October.
33. The backup power generator tested fine in February, including shutting down the flares and restoring them using portable power only.
34. The breakroom area is in good order.
35. Street sweepers are cleaning the entrance area and along the 126 highway.
36. The scales are in good order, with no odors present.
37. Trash analysis is performed twice per year, with the last one occurring two weeks ago.
38. The new terminal basin drainage and culvert designs will be constructed in 2022, after the rainy season.
39. Five air quality monitoring stations are being stored behind the admin buildings, while permits for installation are pending approval.
40. Checked out of site with Steve Cassulo.

FURTHER REVIEW NEEDED


1. Remove wind-blown litter from the landfill overall.

Signed:



CHIQUITA CANYON LANDFILL
MITIGATION MONITORING SITE REPORT

Monitor: Tarik Hadj-Hamou, Ph.D., P.E.	PAGE 1 OF 2
Discipline: Civil – Geotechnical and Hydrology	Date: March 31, 2022
Site Conditions: Sunny moderate wind	
SITE LOG	
Pre-visit meeting	
<ul style="list-style-type: none"> • Meet with UltraSystems team member Mike Lindsay and Jim Aidukas, prepare tour of landfill, discuss potential issues, organize areas and features to inspect. • Meet with Waste Connection and County personnel in parking lot 	
<ul style="list-style-type: none"> • Site inspection • Tour of landfill waste management units <ul style="list-style-type: none"> – Cell 6 – Top of future Cell 8 – Main Canyon Landfill – Cell 7 – Canyon B Landfill – Primary Canyon landfill • Access Roads • Erosion protection system • Drainage systems (Basins, channels) • Landfill for geotechnical and hydrological issues 	
Cell 6	
<ul style="list-style-type: none"> • Face of Cell 6 is temporarily closed with mulch coverage for erosion protection • Waste was being placed on interim top of the cell • Two tilters were in operations • Waste Connection uses EnvironCover plastic sheeting as ADC 	
Future Cell 8	
<ul style="list-style-type: none"> • Excavation is ongoing • An old existing landslide will be remediated by excavating the landside material and replacing it with compacted fill • Waste Connection is waiting for approval of the redesigned terminal sedimentation basins to accommodate the added flow from the future cell • Grading plans have been approved by County 	
Future Cell 7	
<ul style="list-style-type: none"> • Excavation and grading operations were on going 	
Canyon B Landfill	
<ul style="list-style-type: none"> • Not inspected – no activities 	
Primary Canyon Landfill	
<ul style="list-style-type: none"> • Stockpiled soil was being removed (IMG_1507) • Geosynthetics are stored and the geotextiles are properly protected 	
Drainage System	
<ul style="list-style-type: none"> • the drainage ditches along the west portion of the perimeter road have been cleaned 	

<ul style="list-style-type: none"> • Sedimentation Basin #1 – next to the entrance <ul style="list-style-type: none"> – Few feet of water in basin – No debris was observed against the decant tower • Sedimentation Basin #2 – near basin #1 <ul style="list-style-type: none"> – Water in basin – A pump is installed remove the water • The stormwater basin offsite near the post office facilities. <ul style="list-style-type: none"> – Few feet of water in the basin
<p>Erosion Protection Systems</p> <ul style="list-style-type: none"> • Mulch as a BMP against slope erosion is in place over most slopes
<p>Landfill for geotechnical and hydrological issues</p> <ul style="list-style-type: none"> • No issue observed
<p>Conference call with Waste Connection Staff representative to discuss findings of visit to be scheduled</p>
<p>FURTHER REVIEW NEEDED</p>
<ul style="list-style-type: none"> • None
<p>COMMENTS</p>
<ul style="list-style-type: none"> • None
<p>Signed: </p>