

# Workman Mill Association

## East San Gabriel Valley Area Plan

---

Los Angeles County  
Department of Regional Planning

<http://planning.lacounty.gov/site/esgvap/>

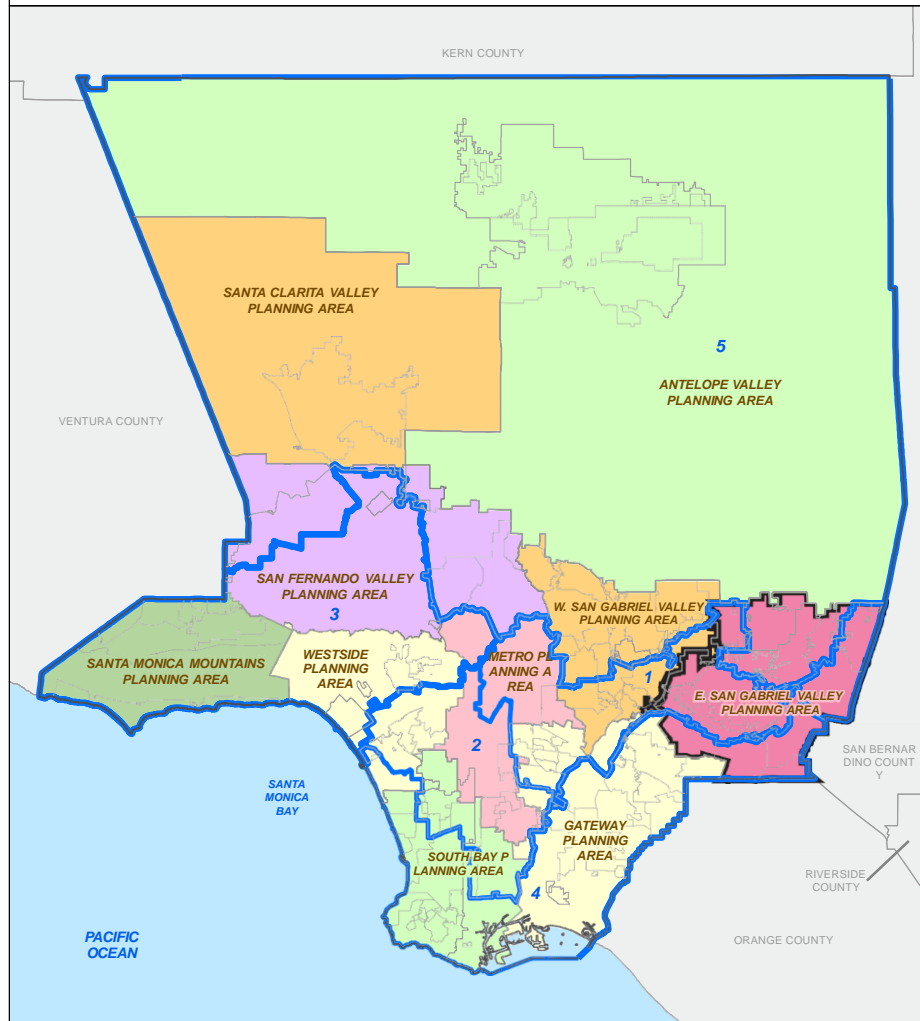


EAST  
SAN GABRIEL VALLEY  
AREA PLAN

LA COUNTY DEPARTMENT OF REGIONAL PLANNING



# L.A. COUNTY PLANNING AREAS & SUPERVISORIAL DISTRICTS



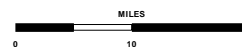
NOTE: ISLANDS ARE NOT SHOWN IN THEIR TRUE LOCATIONS.

## LEGEND

- DRP PLANNING AREAS**
- SUPERVISORIAL DISTRICT**
- CITY AND COMMUNITY BOUNDARY**



LOS ANGELES COUNTY  
DEPT. OF REGIONAL PLANNING  
320 W. TEMPLE ST.  
LOS ANGELES, CA 90012



PREPARED BY DRP GIS SECTION / FEBRUARY 2015

# Area Plans

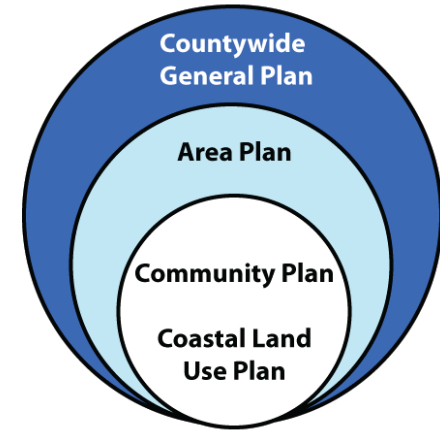
---

LA County General Plan is implemented through 11 Area Plans

Local programs for unincorporated communities

Identify strategies that fit the community

Creating effective land use policy



East San Gabriel Valley Area Planning Area

25% of the population in unincorporated area

Focus on opportunity areas (major corridors and industrial districts)

We are here to begin the discussion on what this community likes and needs.

# EAST SAN GABRIEL VALLEY AREA PLAN

## Planning Area and Overlays

### LEGEND:

- East San Gabriel Valley Planning Area
- Surrounding Planning Areas

### Base Layers

- Metro Rail Stations
- MetroLink Stations
- MetroLink
- Transways
- Metro Rail - Existing
- Metro Rail - Proposed
- Metro Rail - Under Construction
- Airports
- City / Unincorporated Community Boundaries
- Supervisory Districts
- Incorporated Cities
- Unincorporated Areas
- Surrounding Counties

### Overlays

- Community Standards Districts (CSD)
- CSD Subareas
- Equestrian Districts
- Employment Protection Districts (General Plan 2035)
- Opportunity Areas (General Plan 2035)
- National Forest
- Significant Ecological Areas
- Significant Ecological Areas (Incorporated City)
- Conceptual SEAs

### NOTES:

Information about Community Standards Districts, CSD Subareas, and Equestrian Districts can be found in Title 22, Chapter 22.44. Information about Employment Protection Districts can be found in Chapter 14 of the General Plan 2035. Information about Opportunity Areas can be found in Chapter 5. Significant Ecological Areas are also described in the General Plan 2035 in the following sections: Chapter 9 & Appendix E, Section 9.15.1V. <http://www.lacounty.gov/gp2035>  
 East San Gabriel Valley Area Plan: <http://www.lacounty.gov/east-sgvp>  
 General Plan 2035: <http://www.lacounty.gov/gp2035>  
 Title 22 - Planning and Zoning: <http://www.lacounty.gov/title22>

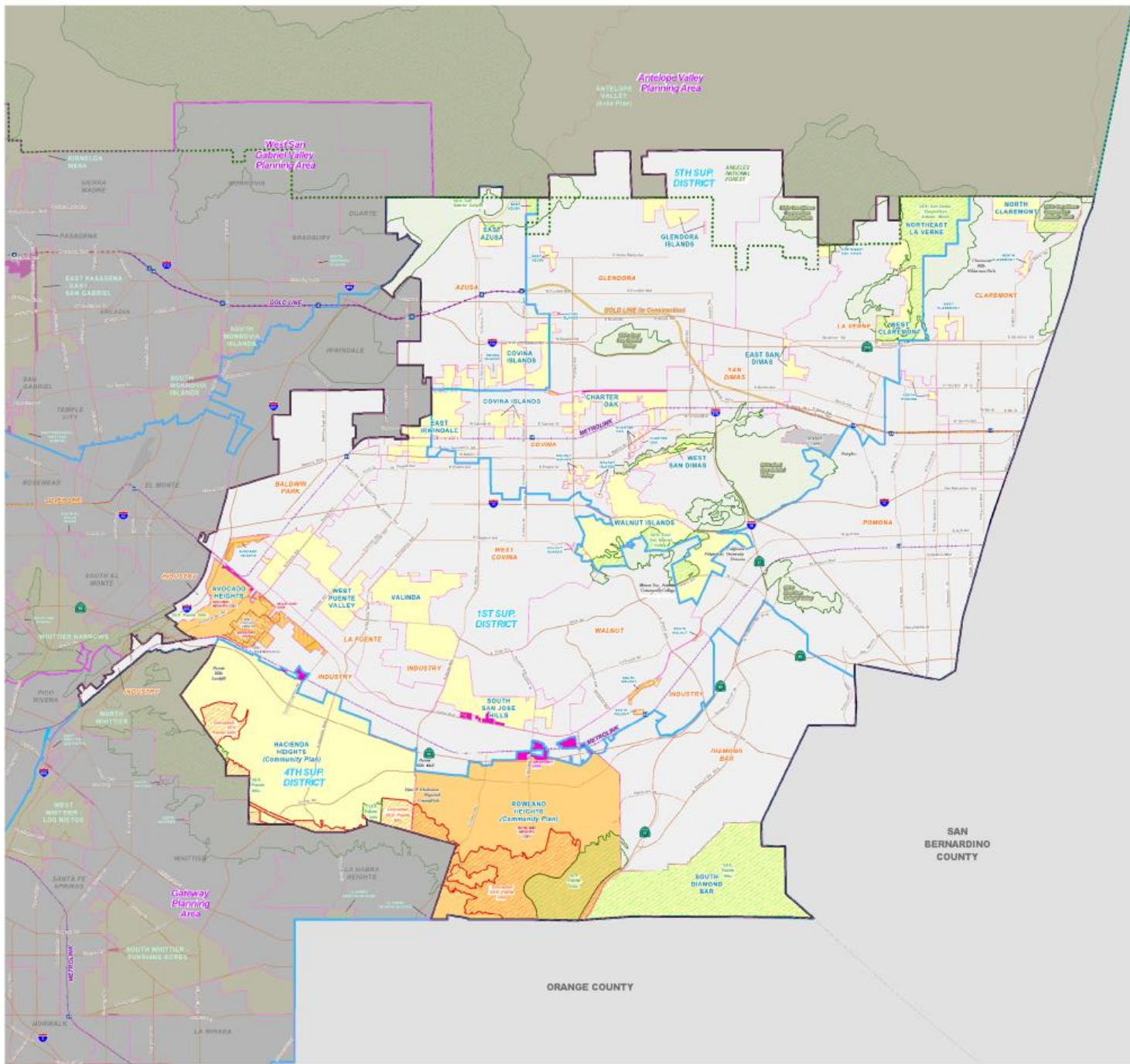
### KEY MAP:



LOS ANGELES COUNTY  
 Board of Supervisors  
 100 N. Spring St.  
 Los Angeles, CA 90012

Scale in Feet  
 0 1000 2000 3000 4000 5000

Current as of: 05/2017



# East San Gabriel Valley Area Plan

---

A long-range policy document to guide sustainable development

A vision with goals, policies, and implementation actions



Local land-use analysis and implementation

Grow coordination with surrounding jurisdictions

Collaborate with community and stakeholders



**EAST  
SAN GABRIEL VALLEY  
AREA PLAN**

LA COUNTY DEPARTMENT OF REGIONAL PLANNING



# 21 Unincorporated Cities

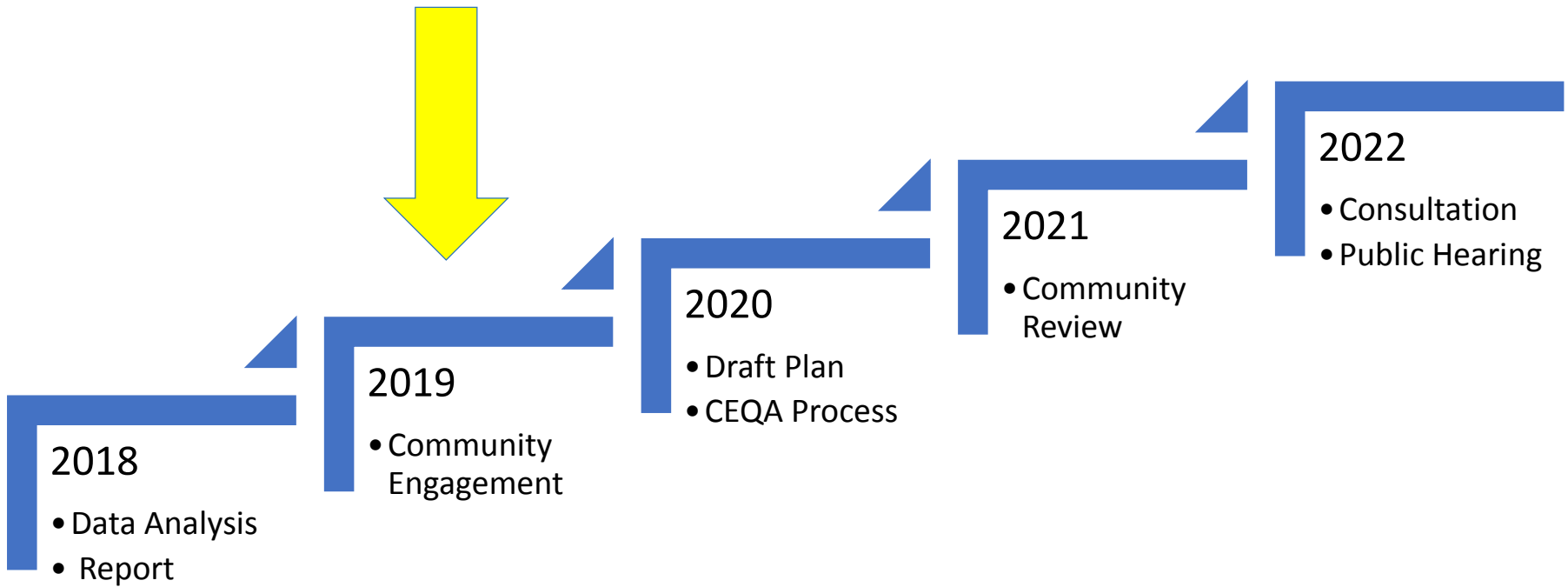
---

- Avocado Heights
- Charter Oak
- Covina Islands
- East Azusa
- East Irwindale
- East San Dimas
- Glendora Islands
- Hacienda Heights
- North Claremont
- North Pomona
- Northeast La Verne
- Northeast San Dimas
- Rowland Heights
- South Diamond Bar
- South San Jose Hills
- South Walnut
- Valinda
- Walnut Islands
- West Claremont
- West Puente Valley
- West San Dimas



# Project Timeline

---



**EAST  
SAN GABRIEL VALLEY  
AREA PLAN**

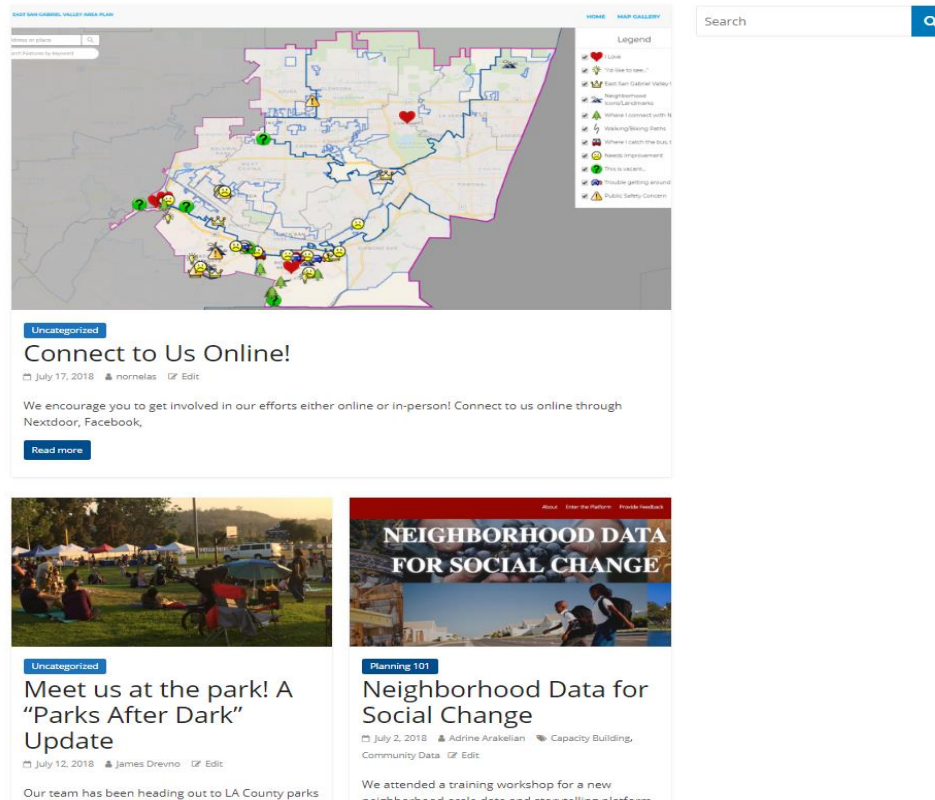
LA COUNTY DEPARTMENT OF REGIONAL PLANNING





# ESGVAP Website - Blog

<http://planning.lacounty.gov/site/esgvap/>



The screenshot displays the ESGVAP website interface. At the top, there is a navigation bar with links for 'HOME' and 'MAP GALLERY'. A search bar is located on the right. The main content area features a map of the East San Gabriel Valley Area Plan, overlaid with various icons representing different themes. A legend on the right side of the map lists these themes: Parks, 'You like to see...', East San Gabriel Valley, Neighborhood, Land/Landmark, Where I connect with, Working/Working Sites, Where I catch the bus, Safety improvement, How to access, Trouble getting around, and Public Safety Concern. Below the map, there is a section titled 'Uncategorized' with the heading 'Connect to Us Online!'. The text encourages users to get involved online or in-person through Nextdoor, Facebook, and other platforms. Below this, there are two more blog posts. The first is titled 'Meet us at the park! A "Parks After Dark" Update' and the second is titled 'Neighborhood Data for Social Change'.

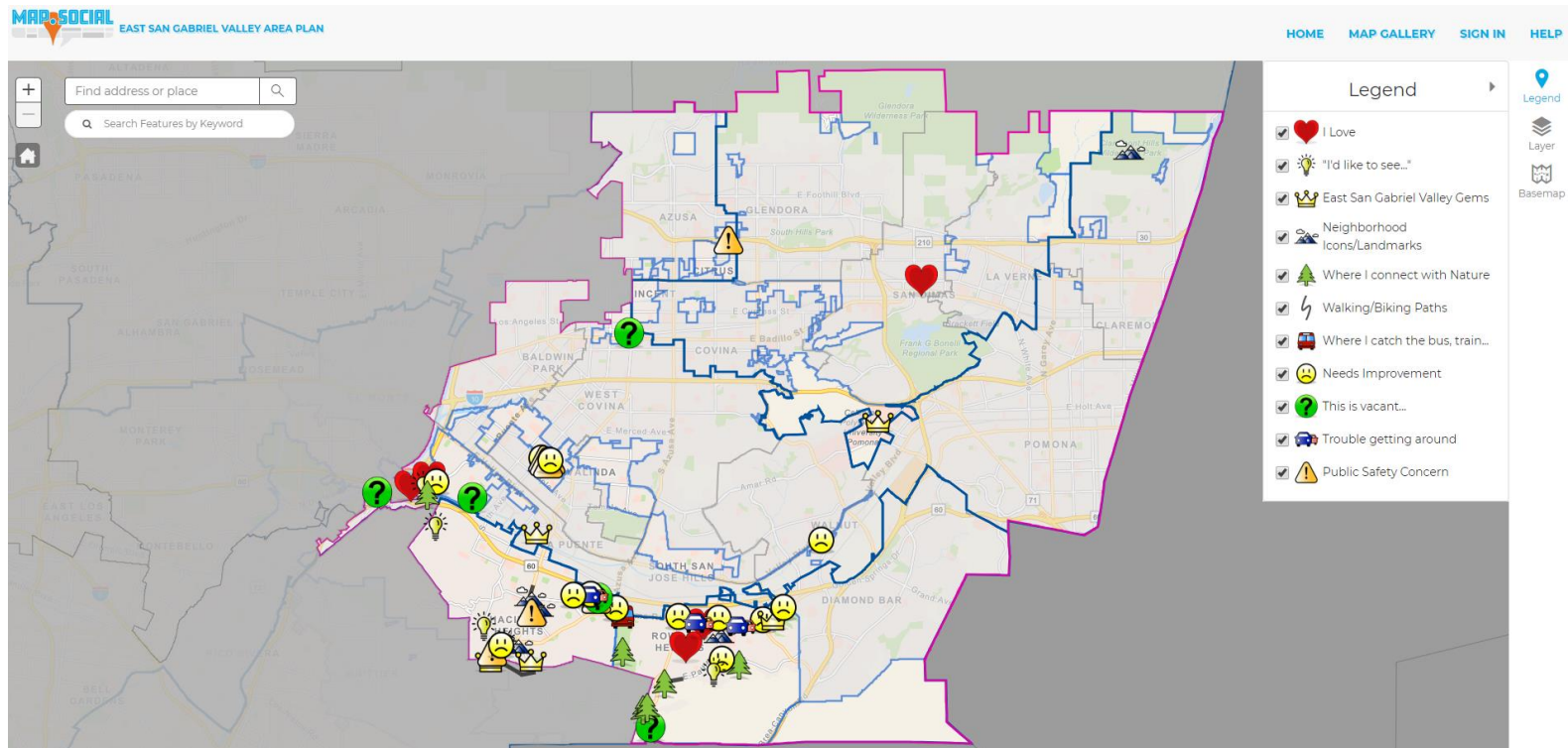
**Uncategorized**  
**Connect to Us Online!**  
July 17, 2018 | nomelas | Edit  
We encourage you to get involved in our efforts either online or in-person! Connect to us online through Nextdoor, Facebook,  
[Read more](#)

**Uncategorized**  
**Meet us at the park! A "Parks After Dark" Update**  
July 12, 2018 | James Drevno | Edit  
Our team has been heading out to LA County parks

**Planning 101**  
**Neighborhood Data for Social Change**  
July 2, 2018 | Adrine Arakelian | Capacity Building, Community Data | Edit  
We attended a training workshop for a new neighborhood scale data and visualization platform



# Map.Social



# A People's Map

Stories from the  
East San Gabriel Valley

<http://fonografiacollective.com/>

Come to Homestead Museum next Saturday  
with photos and personal stories to share  
with our team. In return, we'll give you a  
digital copy of your photos and interview to take home.

**FONO  
GRAFIA**  
COLLECTIVE

apeoplesmap.org  
lacountylibrary.org  
homesteadmuseum.org  
fonografiacollective.com

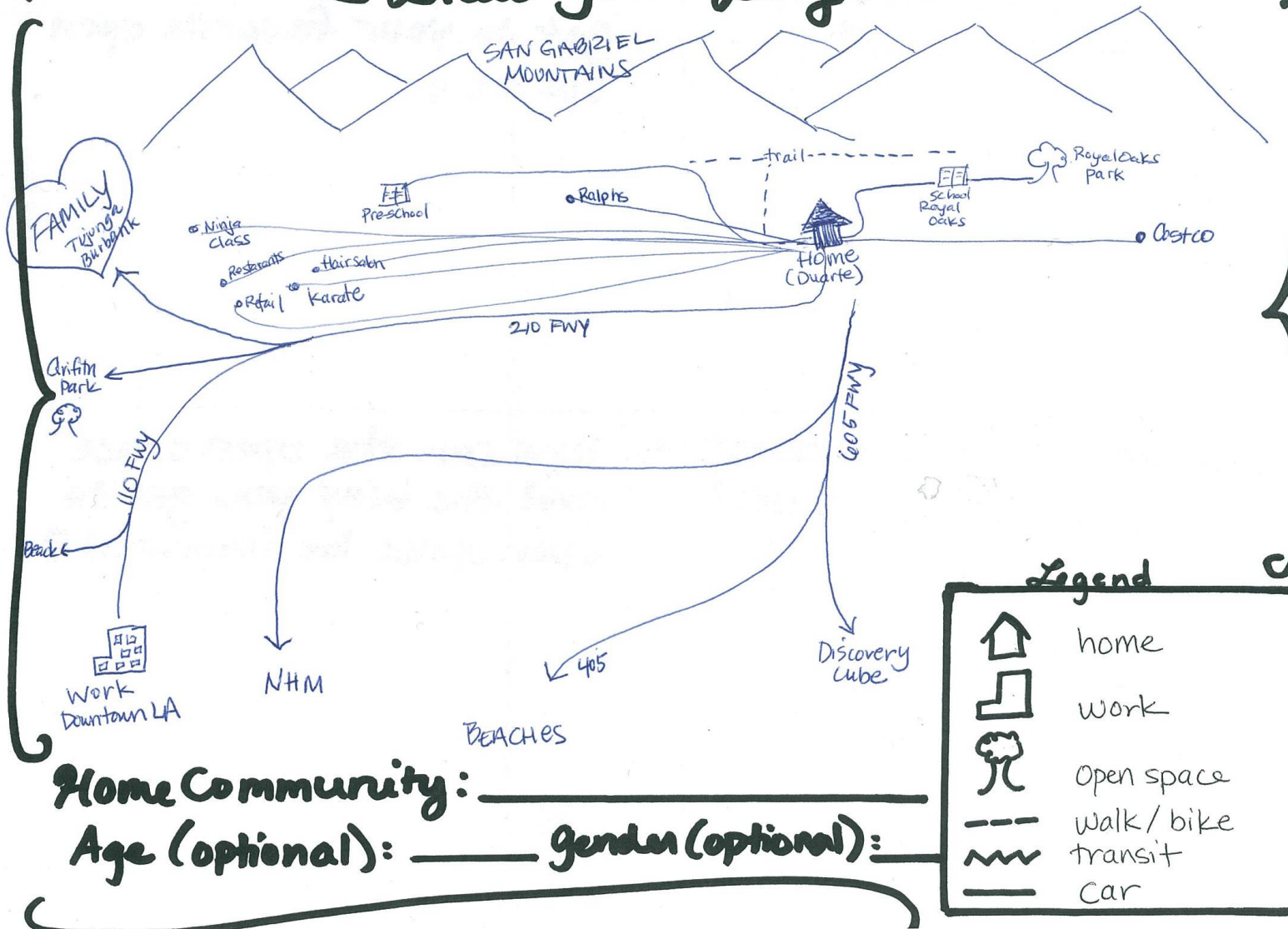


**EAST  
SAN GABRIEL VALLEY  
AREA PLAN**

LA COUNTY DEPARTMENT OF REGIONAL PLANNING



# Draw Your Day!



**EAST  
SAN GABRIEL VALLEY  
AREA PLAN**

LA COUNTY DEPARTMENT OF REGIONAL PLANNING

