

# Community Visioning Workshop

## East San Gabriel Valley Area Plan

---

<http://planning.lacounty.gov/site/esgvap/>

<http://planning.lacounty.gov/site/aoplesmap/>



**EAST  
SAN GABRIEL VALLEY  
AREA PLAN**

LA COUNTY DEPARTMENT OF REGIONAL PLANNING



# Visioning Workshop Agenda

---

1	Introduction to Planning	<i>What is urban and community planning? What are some tools of the trade?</i>
2	Project Information	<i>What is the East San Gabriel Valley Area Plan?</i>
3	Activity 1: Place-it!	<i>What do we <b>value</b> in places and experiences?</i>
4	Activity 2: Community Brainstorm	<i>How can we apply what we <b>value</b> to where we <b>live</b>?</i>

# “Ground Rules”

---

- **Respect for each other.**
- **Keep things civil.**
- **Give everyone an opportunity to be heard.**

Planners in the room can assist with specific planning issues related to your property (or one nearby) after the meeting.

# What is Urban Planning?

---

- Communities change over time.
- Urban Planning manages how community change occurs over time.
- There are new livability challenges in the East San Gabriel Valley.

*How can we plan for a high quality of life for present and future generations?*



EAST  
SAN GABRIEL VALLEY  
AREA PLAN

LA COUNTY DEPARTMENT OF REGIONAL PLANNING



# What is Community Planning?

---

**Community Planning** provides an assessment of the community today, and a vision for the community's future.

- *How do the pieces of the community fit together?*
- *What is here now and how well does it work?*
- *What can and should happen in the community?*

Community members are **key experts**.



EAST  
SAN GABRIEL VALLEY  
AREA PLAN

LA COUNTY DEPARTMENT OF REGIONAL PLANNING



# Community Planning Tools

---

<b>Land Use Policy</b>	<i>Where should uses go?</i>
<b>Zoning</b>	<i>Where are uses allowed?</i>
<b>Implementation Actions</b>	<i>How do we put policy into action?</i>



**EAST  
SAN GABRIEL VALLEY  
AREA PLAN**

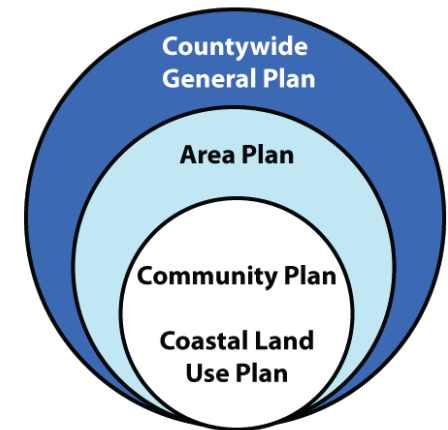
LA COUNTY DEPARTMENT OF REGIONAL PLANNING



# General Plan & Area Plans

---

- **LA County General Plan Purpose:**
  - Foster healthy, livable, and sustainable communities.
  - Conserve natural resources.
  - Shape communities to provide diverse housing near jobs and services.
- **East San Gabriel Valley Area Plan Purpose:**
  - Adapt the General Plan to a local scale.
  - Identify strategies that fit the community.
  - Set funding priorities
  - Work with adjacent jurisdictions to solve regional issues.





# EAST SAN GABRIEL VALLEY AREA PLAN

## Planning Area and Overlays

### LEGEND:

- East San Gabriel Valley Planning Area
- Surrounding Planning Areas

### Base Layers

- Metro Rail Stations
- MetroLink Stations
- MetroLink
- Transways
- Metro Rail - Existing
- Metro Rail - Proposed
- Metro Rail - Under Construction
- Airports
- City / Unincorporated Community Boundaries
- Supervisory Districts
- Incorporated Cities
- Unincorporated Areas
- Surrounding Counties

### Overlays

- Community Standards Districts (CSD)
- CSD Subareas
- Equestrian Districts
- Employment Protection Districts (General Plan 2035)
- Opportunity Areas (General Plan 2035)
- National Forest
- Significant Ecological Areas
- Significant Ecological Areas (Incorporated City)
- Conceptual SEAs

### NOTES:

Information about Community Standards Districts, CSD Subareas, and Equestrian Districts can be found in Title 22, Chapter 22.44. Information about Employment Protection Districts can be found in Chapter 14 of the General Plan 2035. Information about Opportunity Areas can be found in Chapter 5. Significant Ecological Areas are also described in the General Plan 2035 in the following sections: Chapter 9 & Appendix E, Section 9.15.1V.   
East San Gabriel Valley Area Plan: <http://www.lacounty.gov/east-sgvp/>   
General Plan 2035: <http://www.lacounty.gov/gp2035/>   
Title 22 - Planning and Zoning: <http://www.lacounty.gov/title22/>

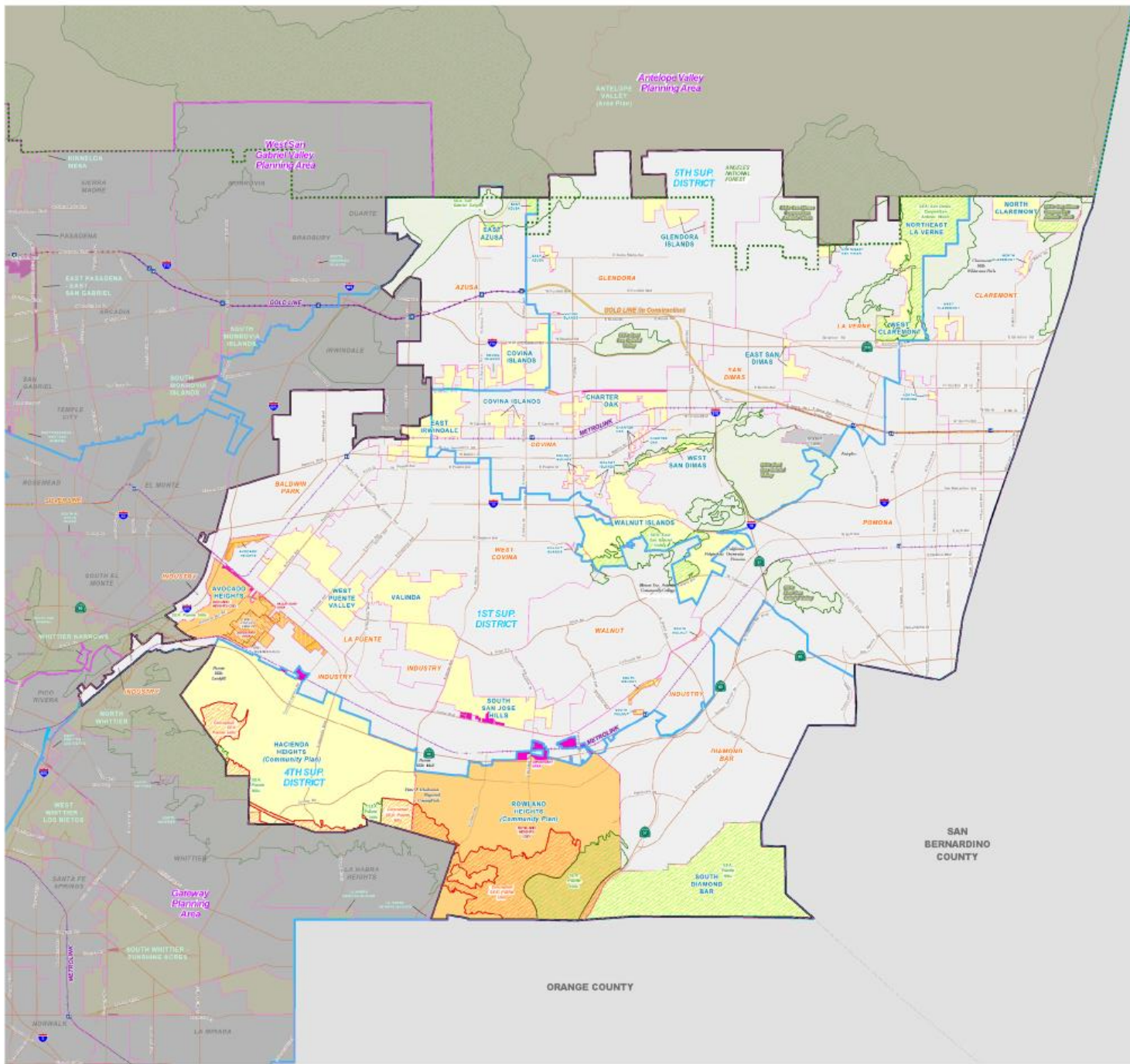
### KEY MAP:



LOS ANGELES COUNTY  
Department of Regional Planning  
200 N. Spring St.  
Los Angeles, CA 90012

Scale in Feet  
0 1000 2000 3000 4000 5000

Current as of: 05/2017



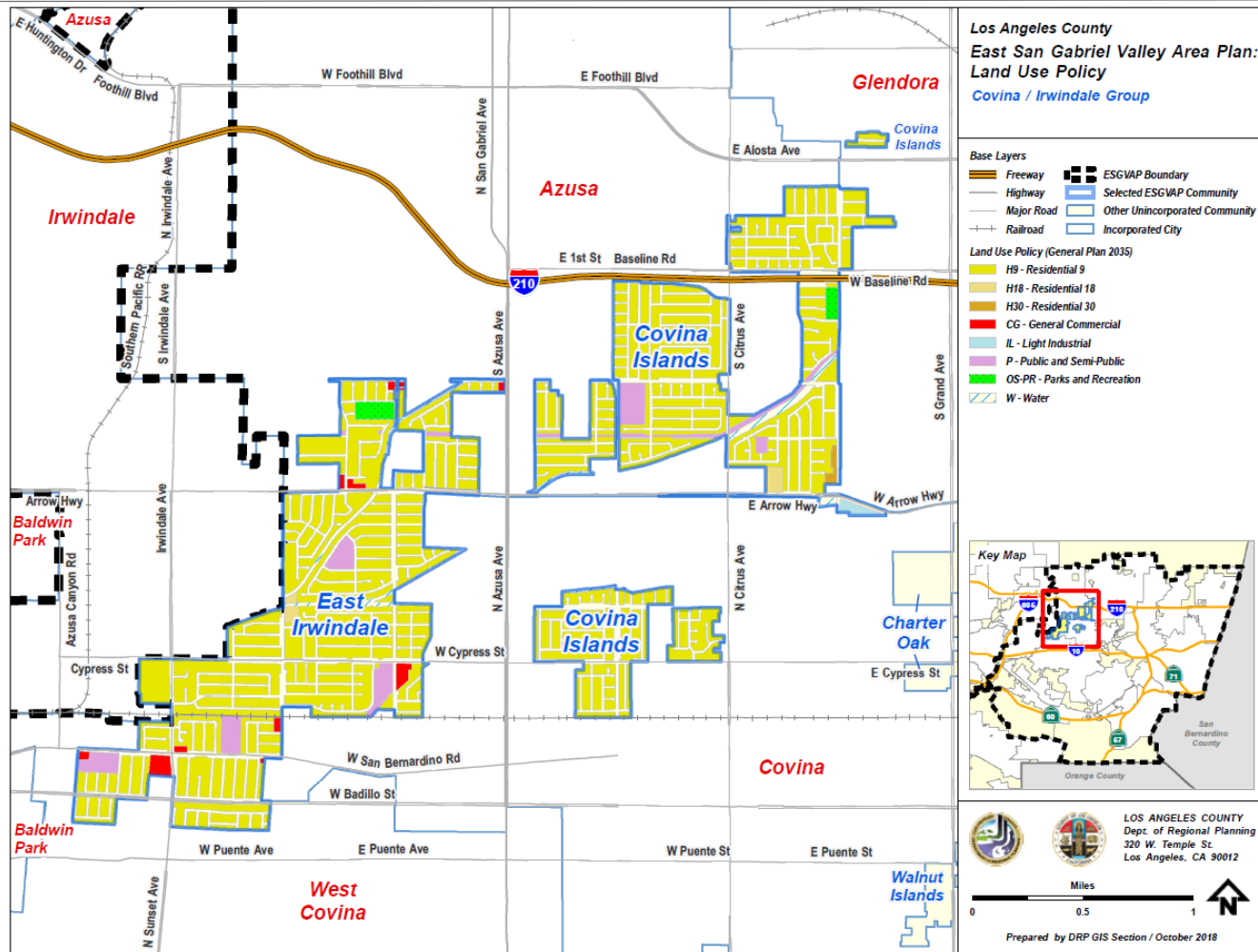


# East SGV Planning Area

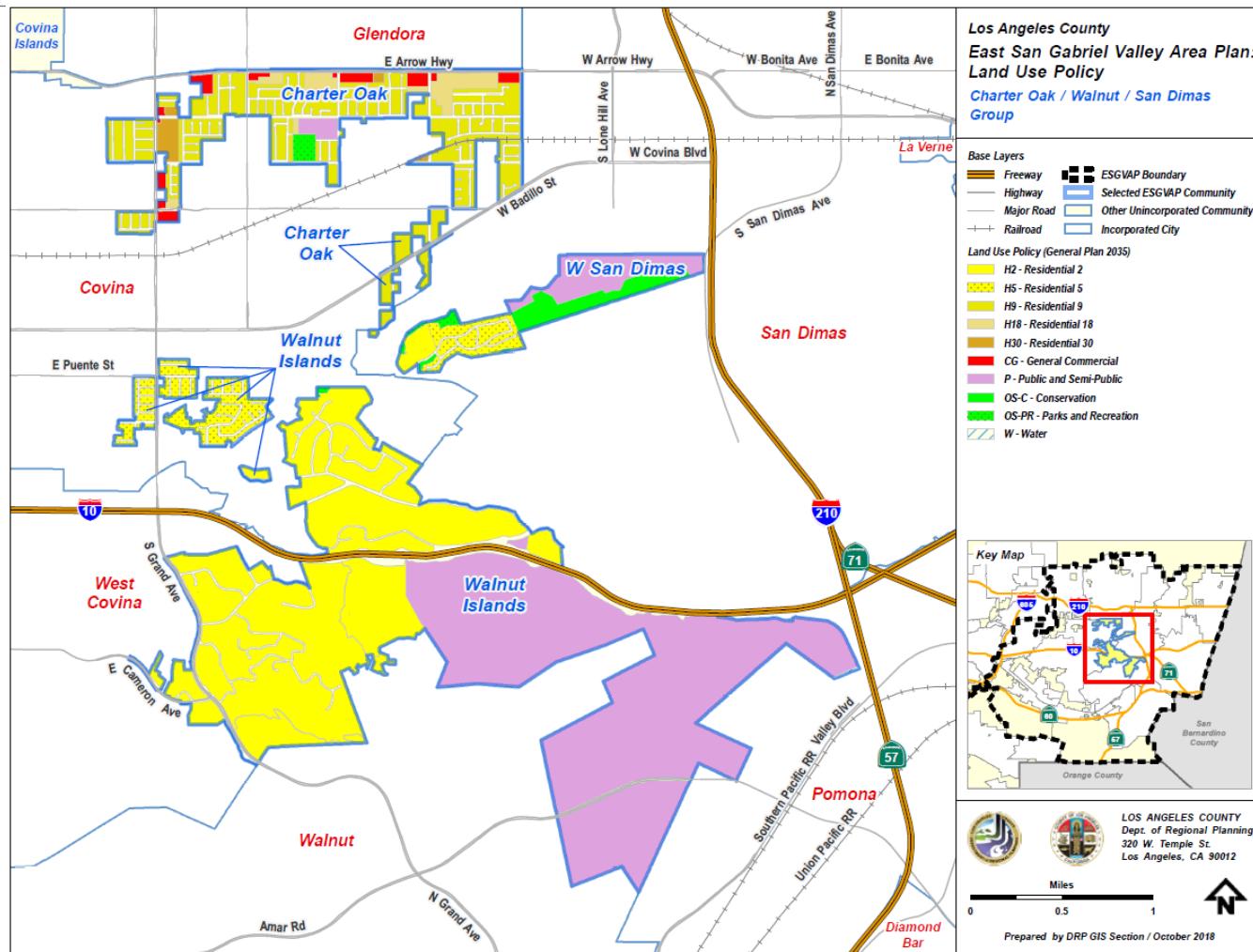
---

- **Area:** 52 sq. mi / 33,000 acres
- **Population:** ~1 million people in total, ~250,000 in unincorporated
- **Key Characteristics:**
  - Natural features - Puente Hills, San Jose Hills San Gabriel Mountains and River.
  - Outdoor recreational opportunities.
  - Diverse population.
  - Auto-oriented community design.

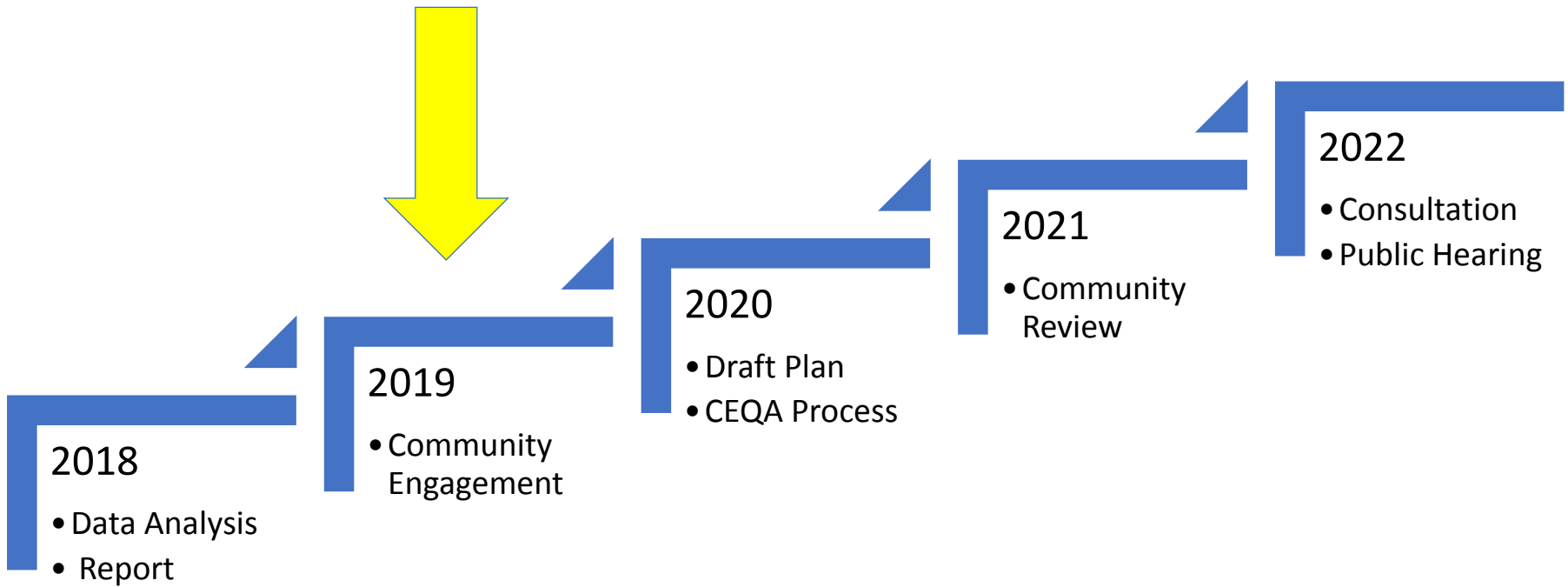
# Land Use Policy: East Irwindale/Covina Islands



# Land Use Policy: Charter Oak/Walnut Islands



# Project Timeline



**EAST  
SAN GABRIEL VALLEY  
AREA PLAN**

LA COUNTY DEPARTMENT OF REGIONAL PLANNING



# Project Website

## East San Gabriel Valley Area Plan

[BLOG](#) [ABOUT](#) [COMMUNITIES](#) [COMMUNITY ENGAGEMENT](#) [Y-PLAN](#) [A PEOPLES MAP](#) [GET INVOLVED](#)



Uncategorized

### Avocado Heights Community Visioning Workshop

November 6, 2019 • Norman Ornelas Jr.

On Saturday, November 2, the East San Gabriel Valley Area Plan team hosted a community visioning workshop at San Angelo.

[Read more](#)



Engagement

### Hacienda Heights Community Visioning Workshop

October 28, 2019 • Norman Ornelas Jr.

**You're Invited!**

The Los Angeles County Dept. of Regional Planning is working on a plan to guide the growth and development and enhance the quality of life for unincorporated communities in the East San Gabriel Valley.

Please join us for a series of community meetings in Fall 2019 to share your vision and perspective.

Date	Location	Time
Oct 28	Staten Island Park, Senior Center (545 S. Sherman Ave., Hacienda Heights)	9:30-11:00am
Nov 3	San Angelo Park (245 S. San Angelo, La Puente)	9:30-11:30am
Nov 14	Campana Senior Park (14000 Torrey Pines Dr., Woodland Heights)	9:30-11:30am
Nov 17	Vallarta Park (5220 N. Clark St., Azusa)	9:30-11:30am

### Join Us for Community Visioning Workshops!

October 10, 2019 • Adriane Arakelian • Capacity Building, engagement

## East San Gabriel Valley Area Plan

[BLOG](#) [ABOUT](#) [COMMUNITIES](#) [COMMUNITY ENGAGEMENT](#) [Y-PLAN](#) [A PEOPLES MAP](#) [GET INVOLVED](#)



## EAST SAN GABRIEL VALLEY AREA PLAN

[Introduction](#)

[Project Summary](#)

[Maps](#)

[Story Maps](#)

[Planning 101](#)

[Map.social](#)



## EAST SAN GABRIEL VALLEY AREA PLAN

LA COUNTY DEPARTMENT OF REGIONAL PLANNING





# A People's Map

Stories from the  
East San Gabriel Valley

<http://fonografiacollective.com/>

**FONO  
GRAFIA**  
COLLECTIVE

[fonografiacollective.com](http://fonografiacollective.com)



**EAST  
SAN GABRIEL VALLEY  
AREA PLAN**

LA COUNTY DEPARTMENT OF REGIONAL PLANNING



# Activity 1: Place-It!

What do we value in places and experiences?

Task: Use the model materials and/or paper at your table to re-create (build/draw/write) your favorite memory or place.

Task/Time	Questions
Task (10 Min.)	<i>What is your favorite childhood memory or favorite place?</i>
Table Share (5 Min.)	<i>Why is this place/memory your favorite? Why do you value it?</i>
Group Share (10 Min.)	<i>Let's list what we care about in our favorite places. What makes them memorable? What qualities do they share?</i>



EAST  
SAN GABRIEL VALLEY  
AREA PLAN

LA COUNTY DEPARTMENT OF REGIONAL PLANNING





# Activity 2: Community Brainstorm

## How can we apply what we value to where we live?

**Task:** List any issues and opportunities you have noticed regarding each category. Be specific!

- **Issues:** *What is not working right now in your community?*
- **Opportunities:** *What could work well but needs support or attention?*

Time	Task
Task (10 Min.)	List issues and opportunities for each category.
Table Priorities (20 Min.)	Share your lists with your table. Put together your table's top three priorities for each category.
Group Share (20 Min.)	Share your table's top priority per category to the group.

# Activity 2: Community Brainstorm

How can we apply what we value to where we live?

Categories	What to Consider?
Housing and Neighborhoods	<ul style="list-style-type: none"><li>• Amount, quality, and affordability of housing.</li><li>• Types of housing (such as housing for seniors).</li></ul>
Retail and other Commercial Uses	<ul style="list-style-type: none"><li>• Quality of commercial spaces.</li><li>• Shopping options and locations.</li><li>• Ease of access.</li></ul>
Transportation	<ul style="list-style-type: none"><li>• Walking, Biking, Driving, Transit.</li><li>• Safety while walking or biking.</li><li>• Ease of transit use.</li><li>• Traffic congestion.</li></ul>



# ESGVAP Website and Contacts

---

**Website:** [planning.lacounty.gov/site/esgvap](http://planning.lacounty.gov/site/esgvap)

**Phone:** (213) 974-6425

## Emails:

Mi Kim: [MKim@planning.lacounty.gov](mailto:MKim@planning.lacounty.gov) (Community Studies East)

Adrine Arakelian: [AArakelian@planning.lacounty.gov](mailto:AArakelian@planning.lacounty.gov) (Land Use, OS & Design)

Norman Ornelas: [Nornelas@planning.lacounty.gov](mailto:Nornelas@planning.lacounty.gov) (EconDevelopment & EJ)

James Drevno: [Jdrevno@planning.lacounty.gov](mailto:Jdrevno@planning.lacounty.gov) (Mobility & Infrastructure)

Caroline Chen: [CChen@planning.lacounty.gov](mailto:CChen@planning.lacounty.gov) (Health & Safety)

Alejandrina Baldwin: [Abaldwin@planning.lacounty.gov](mailto:Abaldwin@planning.lacounty.gov) (Sustainability)