

East San Gabriel Valley Area Plan

Stakeholder Meeting
October 26th, 2021

<http://planning.lacounty.gov/site/esgvap/>



**EAST
SAN GABRIEL VALLEY
AREA PLAN**

LA COUNTY DEPARTMENT OF REGIONAL PLANNING



Meeting Information

Meeting Recording. This meeting will be recorded and shared (with notes, slides, and other materials) for those who cannot attend the meeting.

Have a Question? Use the raised-hand feature in Zoom to ask questions or place your questions in the chat box. There will be designated times for questions, comments, and feedback.

Let's work together. Please be respectful and civil with your comments to other meeting attendees. To reduce ambient noise on the call, attendees will be muted unless speaking.

Follow-ups. We are more than happy to set up individual times with groups for more detailed discussion of specific issues. Just let us know after the meeting. If we are unable to answer your questions during the meeting, we will make sure to follow up.

Introductions

Let's all introduce ourselves. When called upon, please state your name, the organization you are representing, and your role in the organization.

Agenda

- Area Plan project updates
- East San Gabriel Valley Mobility Action Plan (IBI)
- Land Use Element
 - Methodology and status update (ESA)

EAST SAN GABRIEL VALLEY AREA PLAN

Planning Area and Overlays

LEGEND:

- East San Gabriel Valley Planning Area
- Surrounding Planning Areas

Base Layers

- Metro Rail Stations
- MetroLink Stations
- MetroLink
- Transways
- Metro Rail - Existing
- Metro Rail - Proposed
- Metro Rail - Under Construction
- Airports
- City / Unincorporated Community Boundaries
- Supervisory Districts
- Incorporated Cities
- Unincorporated Areas
- Surrounding Counties

Overlays

- Community Standards Districts (CSD)
- CSD Subareas
- Equestrian Districts
- Employment Protection Districts (General Plan 2035)
- Opportunity Areas (General Plan 2035)
- National Forest
- Significant Ecological Areas
- Significant Ecological Areas (Incorporated City)
- Conceptual SEAs

NOTES:

Information about Community Standards Districts, CSD Subareas, and Equestrian Districts can be found in Title 22, Chapter 22.44. Information about Employment Protection Districts can be found in Chapter 14 of the General Plan 2035. Information about Opportunity Areas can be found in Chapter 5. Significant Ecological Areas are also described in the General Plan 2035 in the following sections: Chapter 9 & Appendix E, Section 9.15.1V.
East San Gabriel Valley Area Plan: <http://www.lacounty.gov/east-sgvp/>
General Plan 2035: <http://www.lacounty.gov/gp2035/>
Title 22 - Planning and Zoning: <http://www.lacounty.gov/title22/>

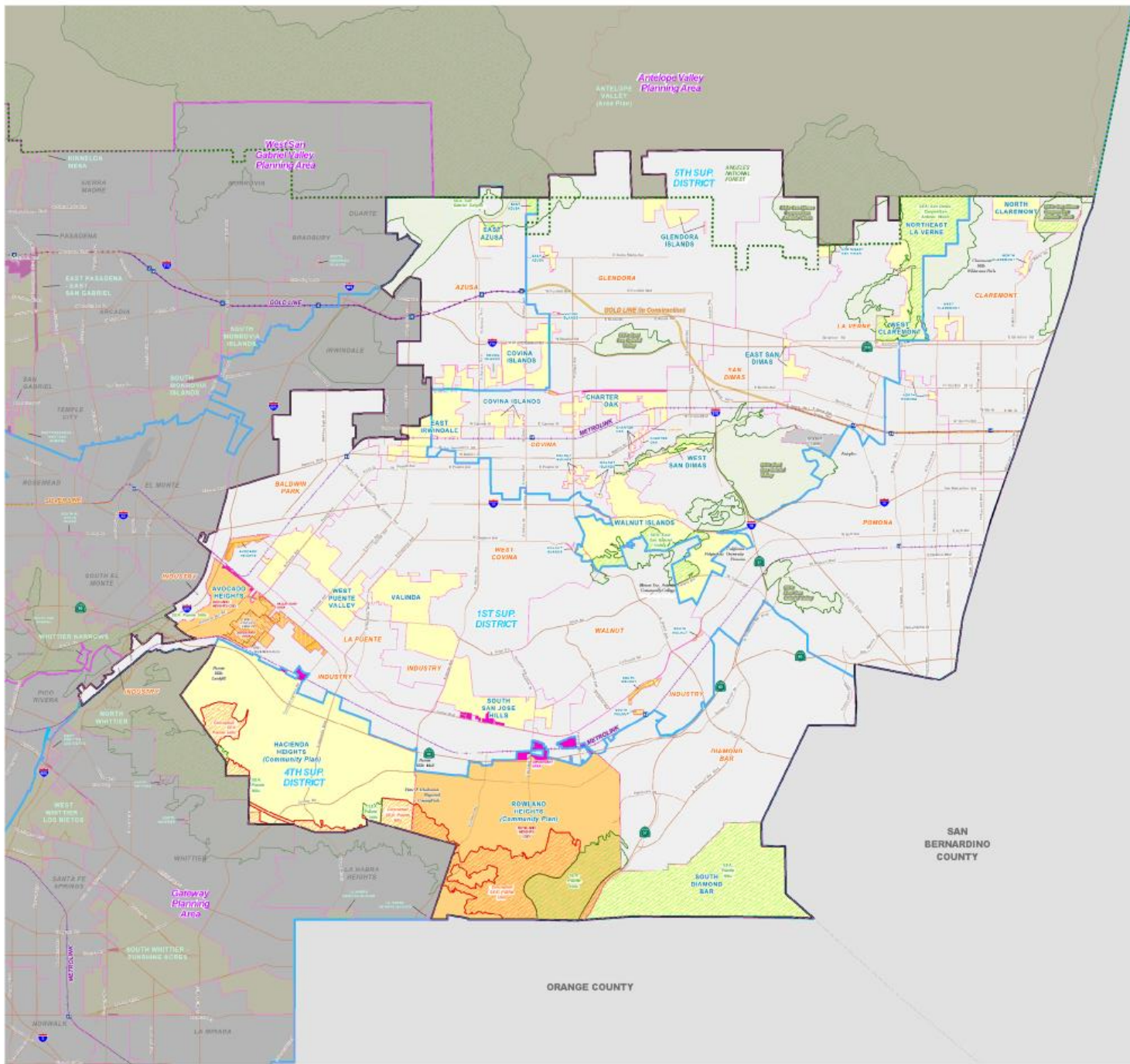
KEY MAP:

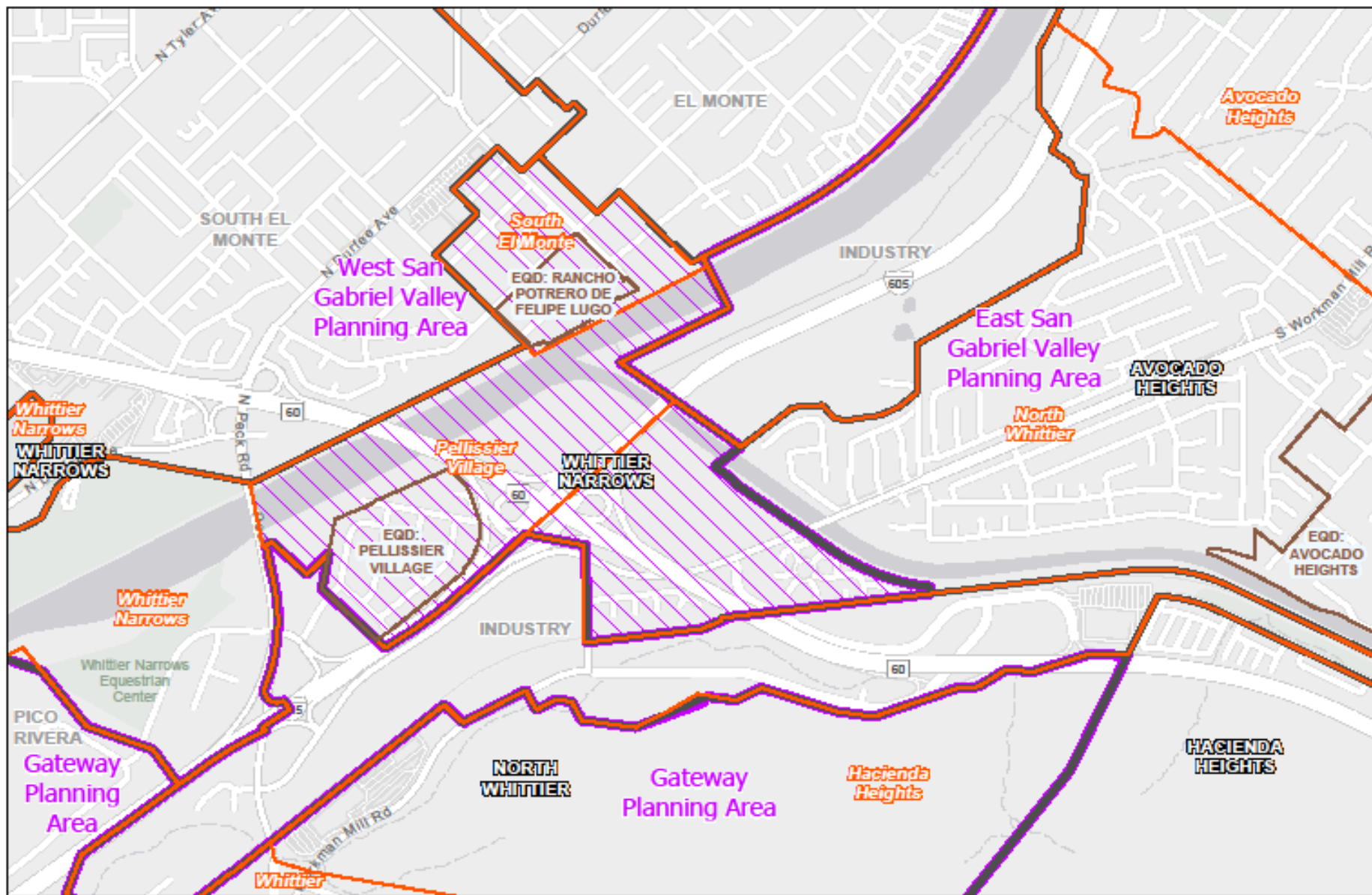







LOS ANGELES COUNTY
Department of Regional Planning
200 N. Spring St.
Los Angeles, CA 90012

Scale in Feet
0 1000 2000 3000 4000 5000

Created on: 05/20/17





- | | |
|---|---|
|  Countywide Statistical Areas |  Planning Areas |
|  City / Unin (DRP) |  Equestrian District |
|  Planning Areas - Proposed Change Area | |

Proposed Planning Area Update

ESGVAP and the General Plan



- **Community Plan Update**

- Rowland Heights Community Plan (1981)
- Hacienda Heights Community Plan (2011)



**EAST
SAN GABRIEL VALLEY
AREA PLAN**

LA COUNTY DEPARTMENT OF REGIONAL PLANNING

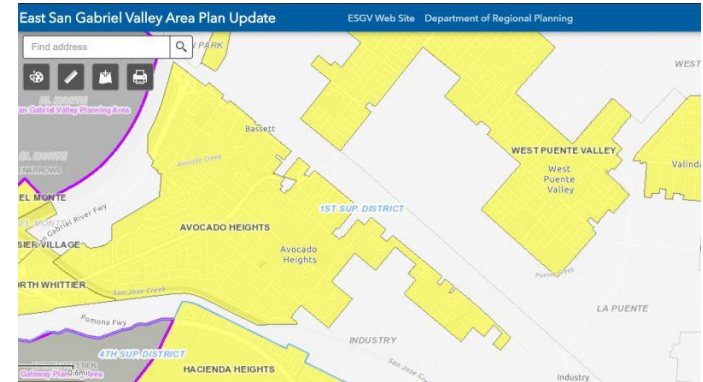
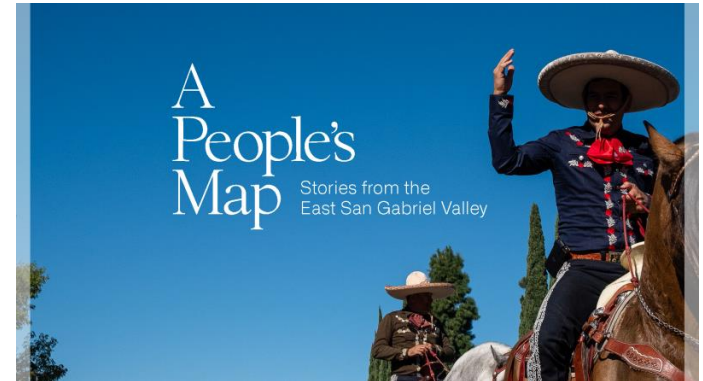


Area Plan

- **Areawide Elements**
 - Goals
 - Policies
 - Implementation Actions
- **Community Specific Chapters**
 - 24 Communities
 - Rowland Heights Community Plan (1981)
 - Hacienda Heights Community Plan (2011)

Project Website

- Project blog
- Interactive Web Map of the ESGV Area
- “A People’s Map” Project
- Community Profiles
- Project materials.
- Project Website: [East San Gabriel Valley Area Plan](http://EastSanGabrielValleyAreaPlan(lacounty.gov))
[\(lacounty.gov\)](http://lacounty.gov)



Staff Updates

- Staff-led Area Plan elements
 - Public Services and Facilities
 - Environmental and Social Justice
 - Open Space and Natural Resources
 - Cultural / Historic Resources
 - Health and Safety
- Community-specific chapters
 - Includes updates to the Rowland Heights and Hacienda Heights Community Plans
- Rowland Heights Community Standards District Update
- Continued community outreach

Overview of Consultant Efforts

Consultant: ESA (Funding: LEAP/REAP Grants)

- Area Plan Elements:
 - Land Use
 - Economic Development
 - Community Character and Design Element
- Higher Density Design Guidelines
- Environmental Impact Report

Consultant: IBI (Funding: SB1 Strategic Partnerships Grant)

- East San Gabriel Valley Mobility Action Plan

Area Plan Structure

- Introduction, History, Areawide Analysis (DRP Staff)
- Land Use Element (ESA)
- Economic Development Element (ESA)
- Community Character and Design Element (ESA)
- Cultural and Historic Resources Element (DRP Staff)
- Conservation and Natural Resources Element (DRP Staff)

Area Plan Structure (Continued)

- Mobility Action Plan (IBI)
- Public Services and Facilities (DRP Staff)
- Health and Safety Element (DRP Staff)
- Environmental and Social Justice (DRP Staff)

- Community Chapters (DRP Staff)
- ESGVAP Implementation Program (DRP Staff)
- Environmental Impact Report (ESA)

ESGV Mobility Action Plan

- SB1 Funded Strategic Partnerships Grant
- 2 Year Grant Term/Project Timeline
 - In line with the ESGVAP
- SCAG Role: RFP, consultant selection process, Caltrans reporting
- DRP Role: Day to day project management, review of consultant work

ESGV Mobility Action Plan

- A regional mobility vision for the ESGV that promotes safe, healthy, efficient, sustainable, and equitable mobility options.
- Coordinate mobility strategies across 24 unincorporated islands and 13 cities in the ESGV area
- Will identify gaps as well as recommendations to close the mobility gaps and creating a regional network of transportation, including active transportation and goods movement.

Land Use (ESA)

- Land use scenarios
- Proximity to major transit stops and HQTAs
- Social nodes/village centers
- Connectivity/walkability
- Methodology
- Recommendations

Questions