

# East San Gabriel Valley Area Plan

Stakeholder Meeting  
June 23<sup>rd</sup>, 2021

---

<http://planning.lacounty.gov/site/esgvap/>



**EAST  
SAN GABRIEL VALLEY  
AREA PLAN**

LA COUNTY DEPARTMENT OF REGIONAL PLANNING



# Meeting Information

---

**Meeting Recording.** This meeting will be recorded and shared (with notes, slides, and other materials) for those who cannot attend the meeting.

**Have a Question?** Use the raised-hand feature in Zoom to ask questions or place your questions in the chat box. There will be designated times for questions, comments, and feedback.

**Let's work together.** Please be respectful and civil with your comments to other meeting attendees. To reduce ambient noise on the call, attendees will be muted unless speaking.

**Follow-ups.** We are more than happy to set up individual times with groups for more detailed discussion of specific issues. Just let us know after the meeting. If we are unable to answer your questions during the meeting, we will make sure to follow up.

# Introductions

---

Let's all introduce ourselves. When called upon, please state your name, the organization you are representing, and your role in the organization.

# Agenda

---

- Area Plan project updates
- East San Gabriel Valley Mobility Action Plan (IBI)
- ESGVAP Consultant Components (ESA)
- ESGV Capital Improvement Plan Update
- UCLA Capstone Research Project

# EAST SAN GABRIEL VALLEY AREA PLAN

## Planning Area and Overlays

### LEGEND:

- East San Gabriel Valley Planning Area
- Surrounding Planning Areas

### Base Layers

- Metro Rail Stations
- MetroLink Stations
- MetroLink
- Transways
- Metro Rail - Existing
- Metro Rail - Proposed
- Metro Rail - Under Construction
- Airports
- City / Unincorporated Community Boundaries
- Supervisory Districts
- Incorporated Cities
- Unincorporated Areas
- Surrounding Counties

### Overlays

- Community Standards Districts (CSD)
- CSD Subareas
- Equestrian Districts
- Employment Protection Districts (General Plan 2035)
- Opportunity Areas (General Plan 2035)
- National Forest
- Significant Ecological Areas
- Significant Ecological Areas (Incorporated City)
- Conceptual SEAs

### NOTES:

Information about Community Standards Districts, CSD Subareas, and Equestrian Districts can be found in Title 22, Chapter 22.44. Information about Employment Protection Districts can be found in Chapter 14 of the General Plan 2035. Information about Opportunity Areas can be found in Chapter 5. Significant Ecological Areas are also described in the General Plan 2035 in the following sections: Chapter 9 & Appendix E, Section 9.15.1V.   
East San Gabriel Valley Area Plan: <http://planning.lacounty.gov/east-sgvp/>   
General Plan 2035: <http://planning.lacounty.gov/gp2035/>   
Title 22 - Planning and Zoning: <http://planning.lacounty.gov/title22/>

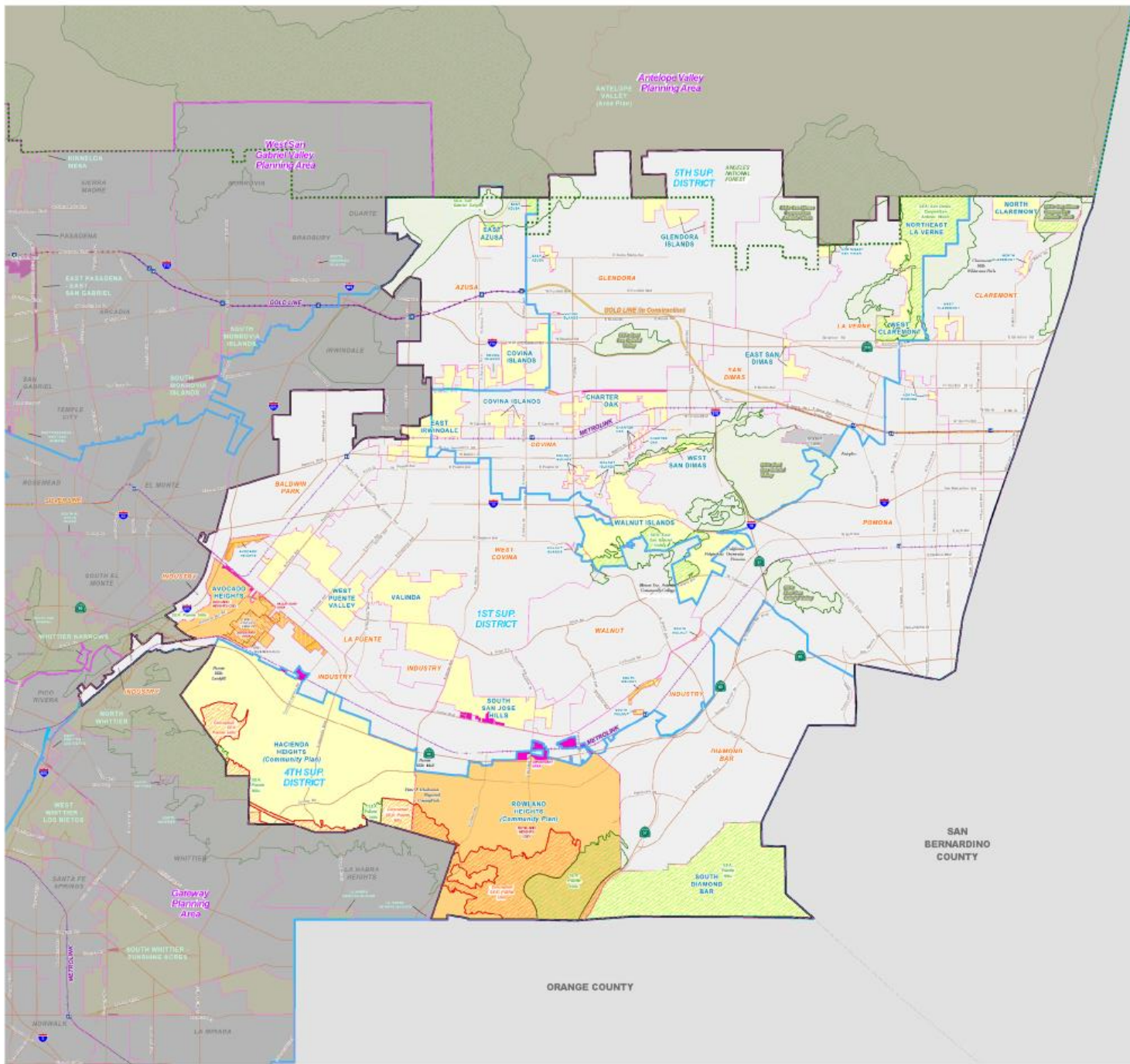
### KEY MAP:



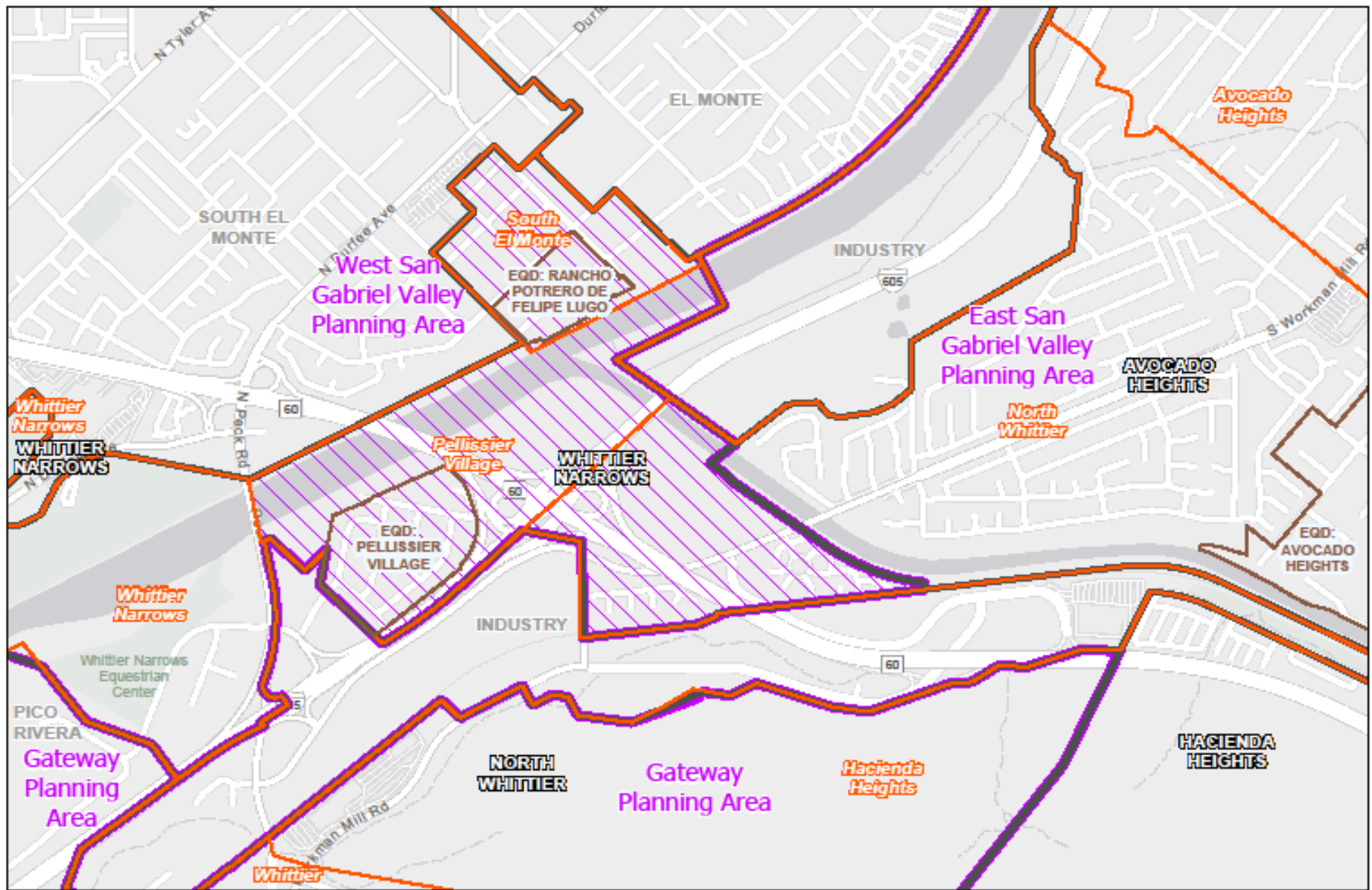
LOS ANGELES COUNTY  
Department of Regional Planning  
200 N. Spring St.  
Los Angeles, CA 90012

Scale in Feet  
0 1000 2000 3000 4000 5000

Created on: 05/20/17







Countywide Statistical Areas

City / Unin (DRP)

Planning Areas - Proposed Change Area

Planning Areas

Equestrian District

Proposed Planning Area Update

# ESGVAP and the General Plan

---



- **Community Plan Update**

- Rowland Heights Community Plan (1981)
- Hacienda Heights Community Plan (2011)



**EAST  
SAN GABRIEL VALLEY  
AREA PLAN**

LA COUNTY DEPARTMENT OF REGIONAL PLANNING



# Area Plan

---

- **Areawide Elements**
  - Goals
  - Policies
  - Implementation Actions
- **Community Specific Chapters**
  - 24 Communities
  - Rowland Heights Community Plan (1981)
  - Hacienda Heights Community Plan (2011)



**EAST  
SAN GABRIEL VALLEY  
AREA PLAN**

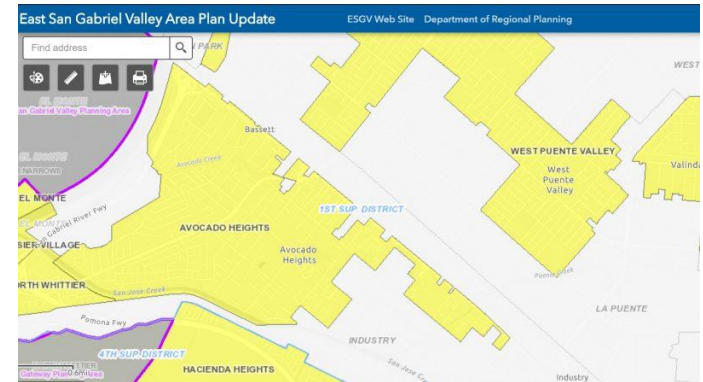
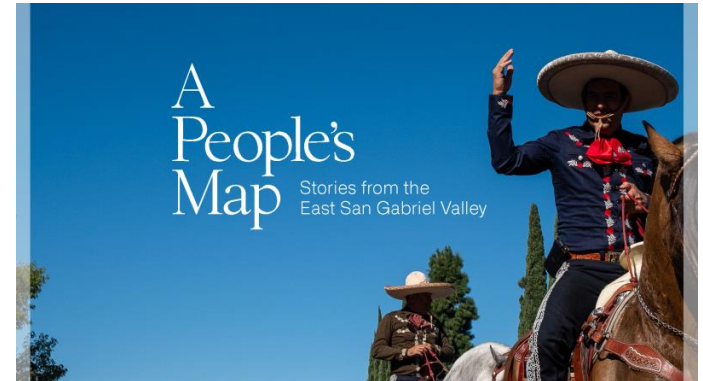
LA COUNTY DEPARTMENT OF REGIONAL PLANNING





# Project Website

- Project blog
- Interactive Web Map of the ESGV Area
- “A People’s Map” Project
- Community Profiles
- Project materials.
- Project Website: [East San Gabriel Valley Area Plan \(lacounty.gov\)](http://EastSanGabrielValleyAreaPlan.lacounty.gov)



# Staff Updates

---

- Staff-led Area Plan elements
  - Public Services and Facilities
  - Environmental and Social Justice
  - Open Space and Natural Resources
  - Cultural / Historic Resources
  - Health and Safety
- Community-specific chapters
  - Includes updates to the Rowland Heights and Hacienda Heights Community Plans
- Rowland Heights Community Standards District Update
- Continued community outreach

# Overview of Consultant Efforts

---

## **Consultant: ESA (Funding: LEAP/REAP Grants)**

- Area Plan Elements:
  - Land Use
  - Economic Development
  - Community Character and Design Element
- Higher Density Design Guidelines
- Environmental Impact Report

## **Consultant: IBI (Funding: SB1 Strategic Partnerships Grant)**

- East San Gabriel Valley Mobility Action Plan

# ESGV Mobility Action Plan

---

- SB1 Funded Strategic Partnerships Grant
- 2 Year Grant Term/Project Timeline
  - In line with the ESGVAP
- SCAG Role: RFP, consultant selection process, Caltrans reporting
- DRP Role: Day to day project management, review of consultant work

# ESGV Mobility Action Plan

---

- A regional mobility vision for the ESGV that promotes safe, healthy, efficient, sustainable, and equitable mobility options.
- Coordinate mobility strategies across 24 unincorporated islands and 13 cities in the ESGV area
- Will identify gaps as well as recommendations to close the mobility gaps and creating a regional network of transportation, including active transportation and goods movement.

# Area Plan Structure

---

- Introduction, History, Areawide Analysis (DRP Staff)
- **Land Use Element (ESA)**
- **Economic Development Element (ESA)**
- **Community Character and Design Element (ESA)**
- Cultural and Historic Resources Element (DRP Staff)
- Conservation and Natural Resources Element (DRP Staff)



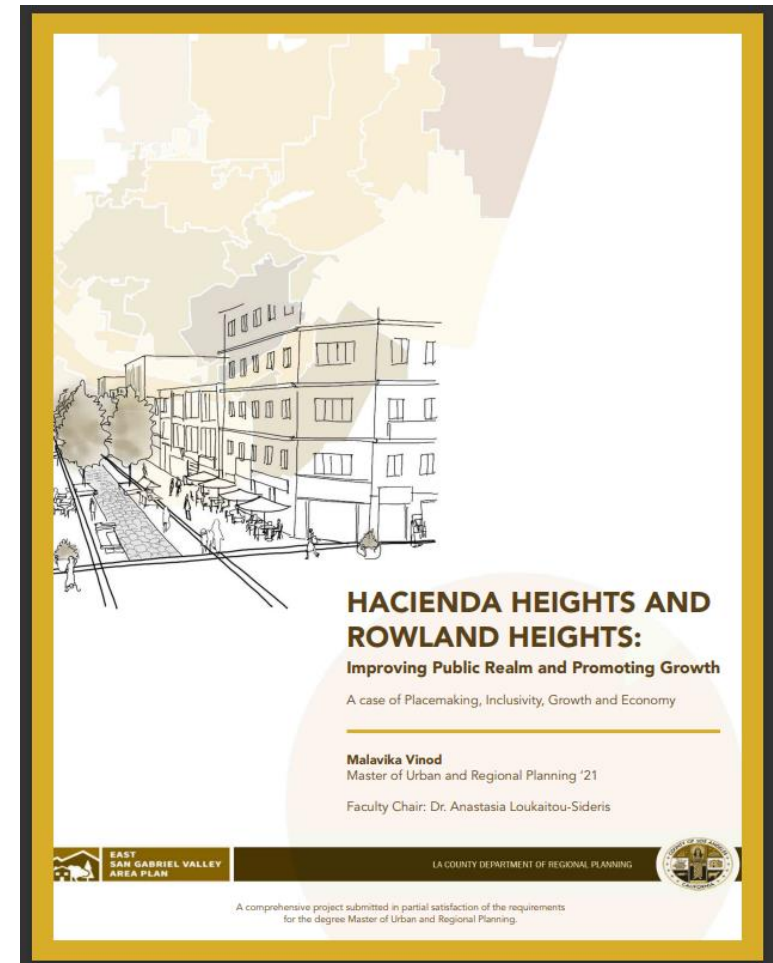
# Area Plan Structure (Continued)

---

- Mobility Action Plan (IBI)
- Public Services and Facilities (DRP Staff)
- Health and Safety Element (DRP Staff)
- Environmental and Social Justice (DRP Staff)
  
- Community Chapters (DRP Staff)
- ESGVAP Implementation Program (DRP Staff)
- Environmental Impact Report (ESA)

# UCLA Capstone Project

- UCLA Graduate Student Malavika Vinod's Capstone Report
- Topic: improving the public realm and creating vibrancy in the communities of Hacienda Heights and Rowland Heights.
- Focus Areas:
  - S Hacienda Blvd (Between Tetley and Haliburton St.)
  - S Hacienda Blvd and Colima Rd
  - Colima Rd and S. Nogales St.
- Link to the report and poster: [UCLA Student Project Spotlight – East San Gabriel Valley Area Plan](https://ucla.studentprojectspotlight.com/east-san-gabriel-valley-area-plan) ([lacounty.gov](https://lacounty.gov))



EAST  
SAN GABRIEL VALLEY  
AREA PLAN

LA COUNTY DEPARTMENT OF REGIONAL PLANNING



# Questions